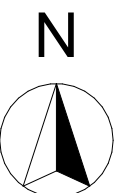
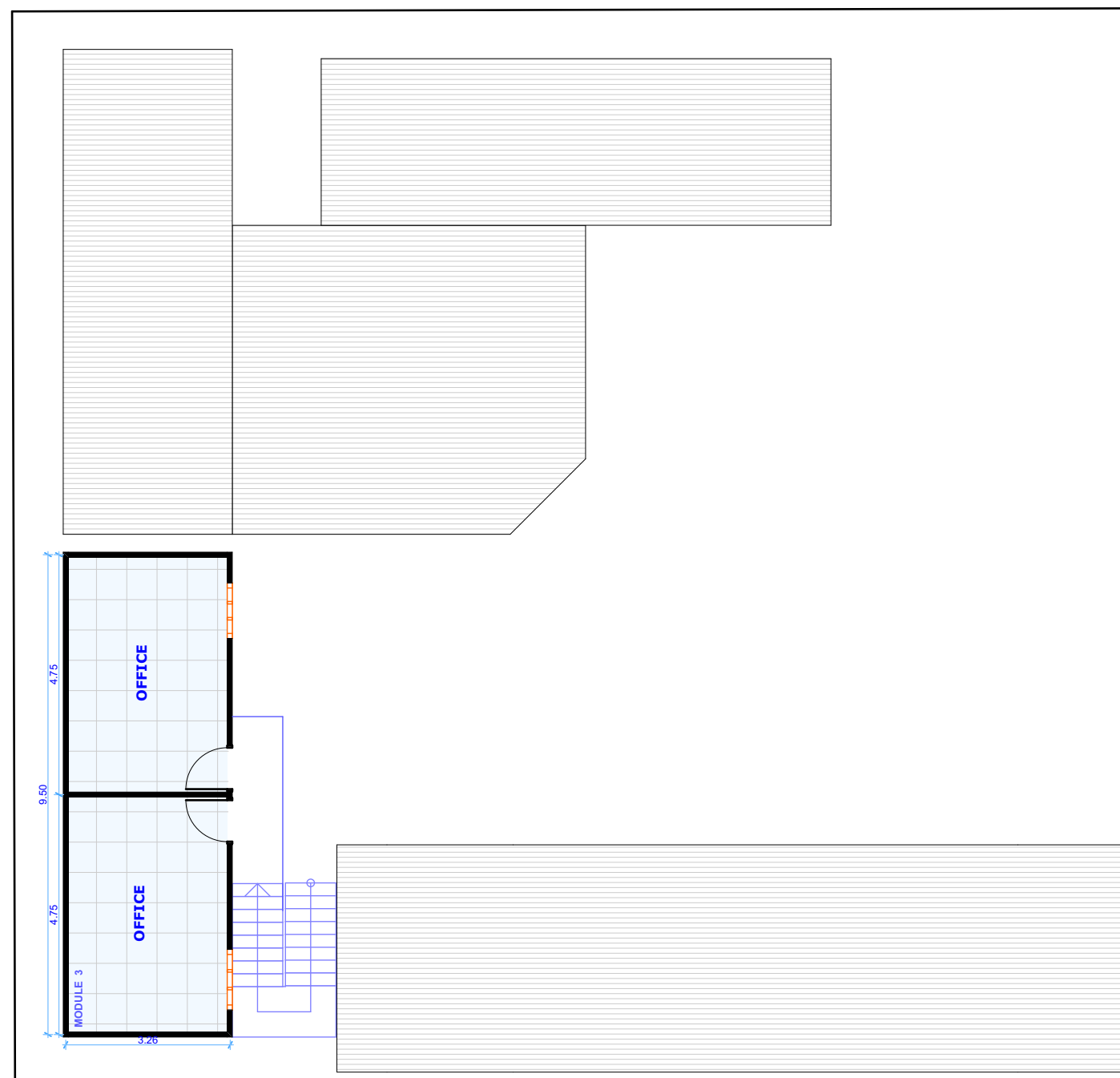


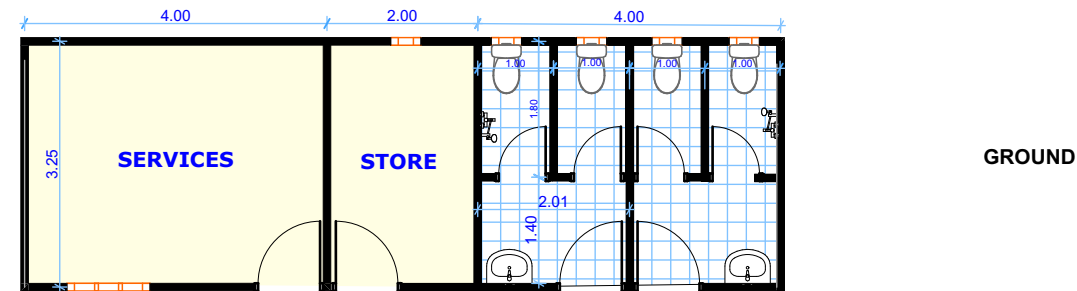
GROUND FLOOR PLAN





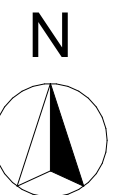
FIRST FLOOR PLAN

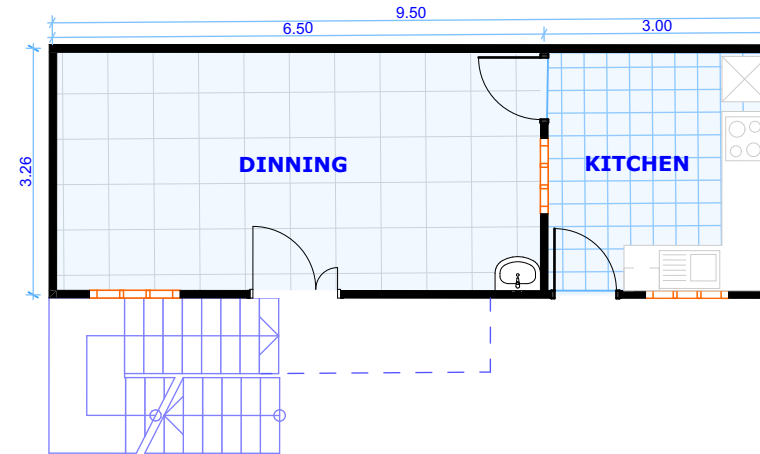




GROUND

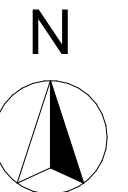
MODULE (01) PLAN

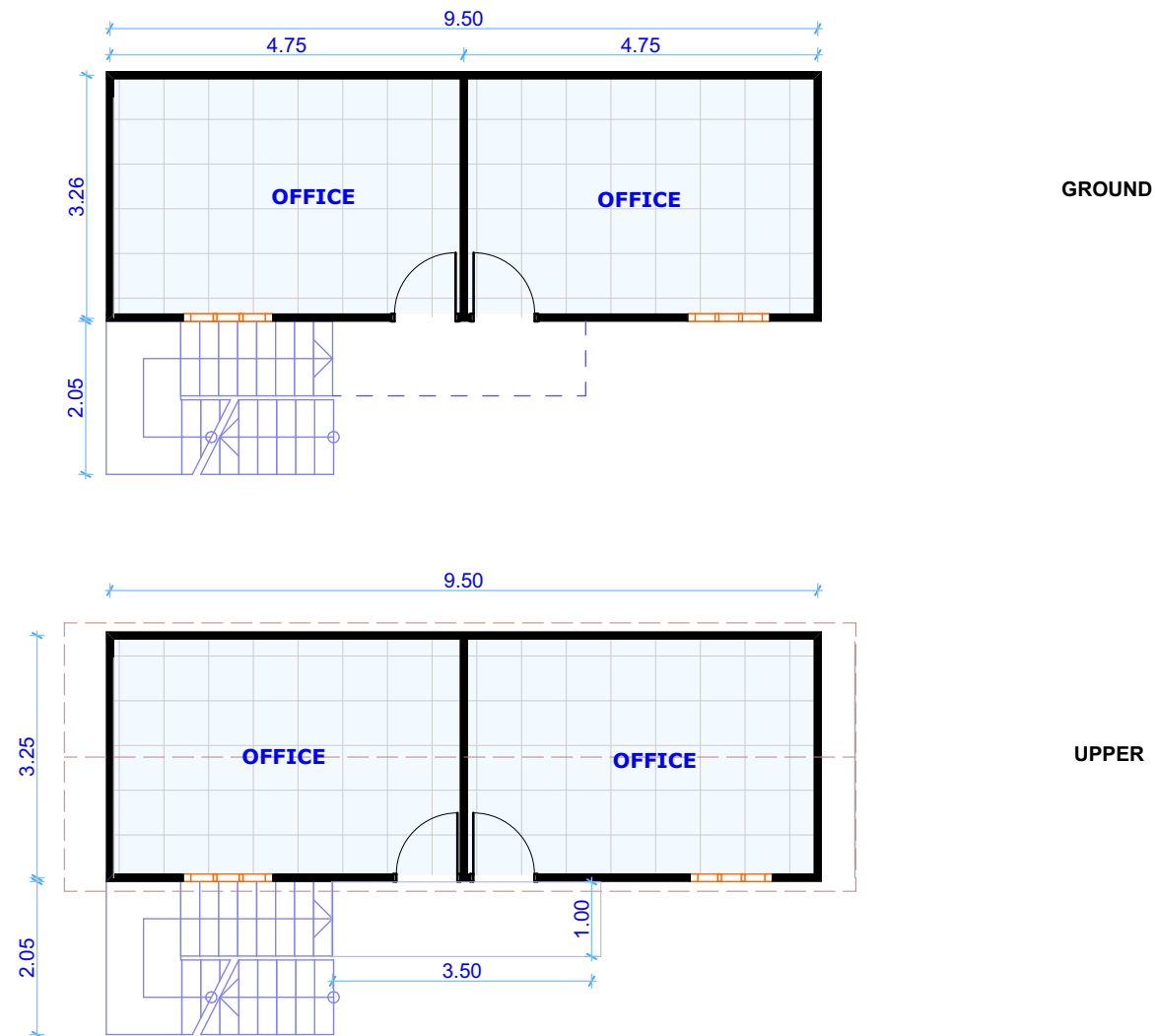




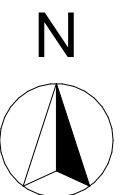
GROUND


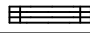


MODULE (02) PLAN

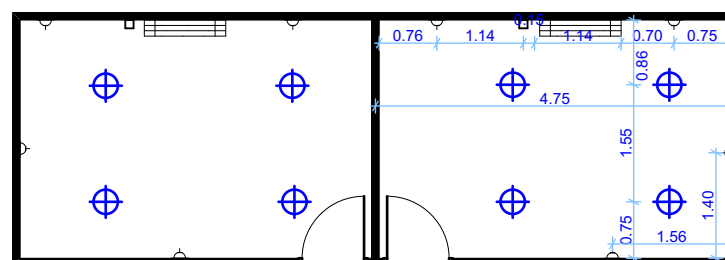




MODULE (03) PLAN


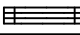
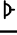



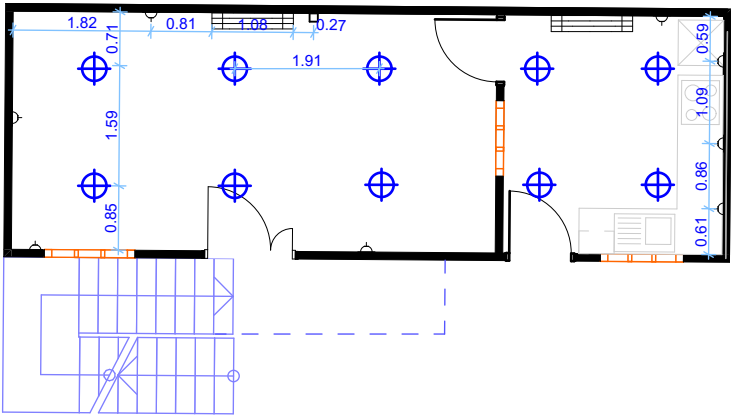
| SYMBOL | DESCRIPTION |
|---|------------------|
|  | CEILING LED LAMP |
|  | AIR CONDITION |
|  | 13 AMP SOCKET |
|  | AC CONECT/SOCKET |



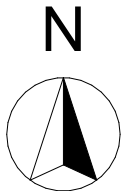
ELECTRICAL PLAN



| SYMBOL | DESCRIPTION |
|---|------------------|
|  | CEILING LED LAMP |
|  | AIR CONDITION |
|  | 13 AMP SOCKET |
|  | AC CONECT/SOCKET |

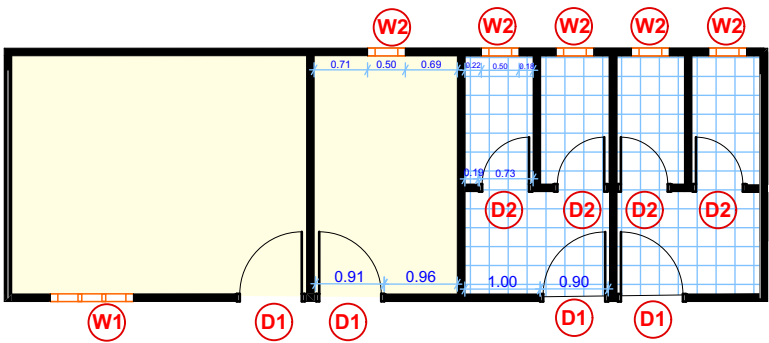


ELECTRICAL PLAN

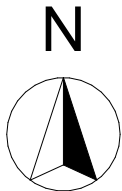


DOORS & WINDOWS

| TYPE | W | H | REMARKS |
|------|------|------|---------------|
| D1 | 1.00 | 2.00 | INCLUDE FRAME |
| D2 | 0.85 | 2.00 | INCLUDE FRAME |
| W1 | 1.20 | 1.00 | INCLUDE FRAME |
| W2 | 0.50 | 0.50 | INCLUDE FRAME |

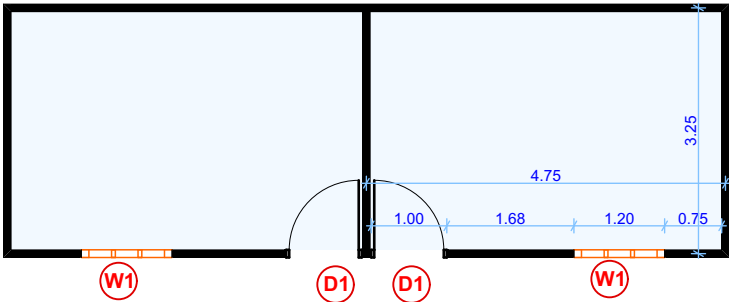


DOORS AND WINDOWS

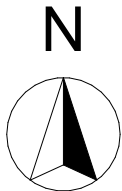


DOORS & WINDOWS

| TYPE | W | H | REMARKS |
|------|------|------|---------------|
| D1 | 1.00 | 2.00 | INCLUDE FRAME |
| W1 | 1.20 | 1.00 | INCLUDE FRAME |

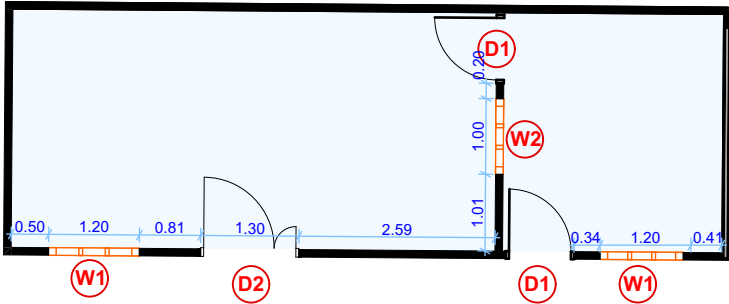


DOORS AND WINDOWS

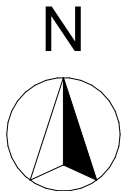


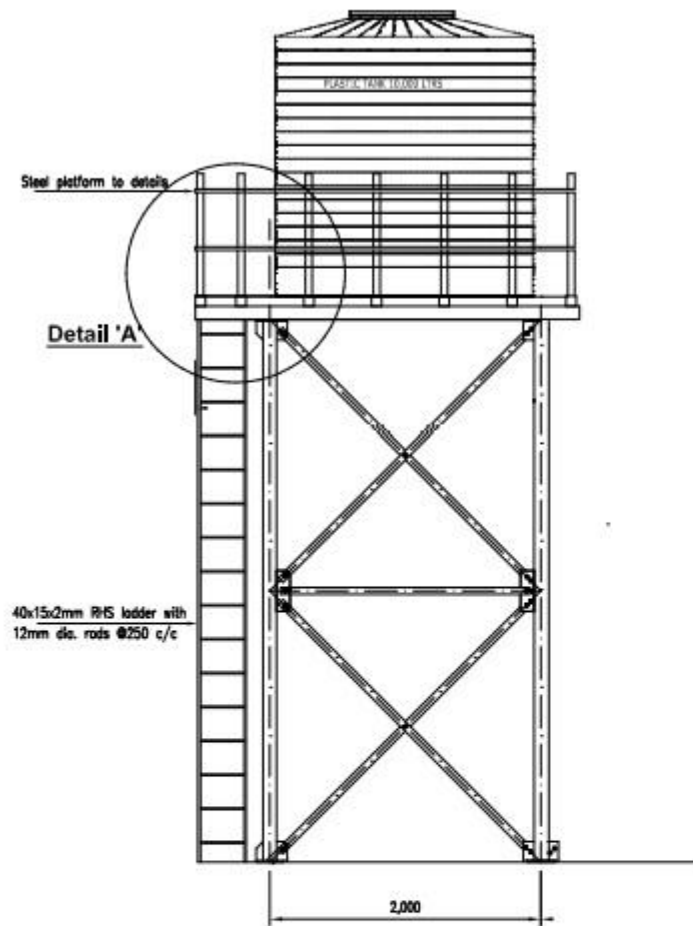
DOORS & WINDOWS

| TYPE | W | H | REMARKS |
|------|------|------|---------------|
| D1 | 1.00 | 2.00 | INCLUDE FRAME |
| D2 | 1.30 | 2.00 | INCLUDE FRAME |
| W1 | 1.20 | 1.00 | INCLUDE FRAME |
| W2 | 1.00 | 0.75 | INCLUDE FRAME |



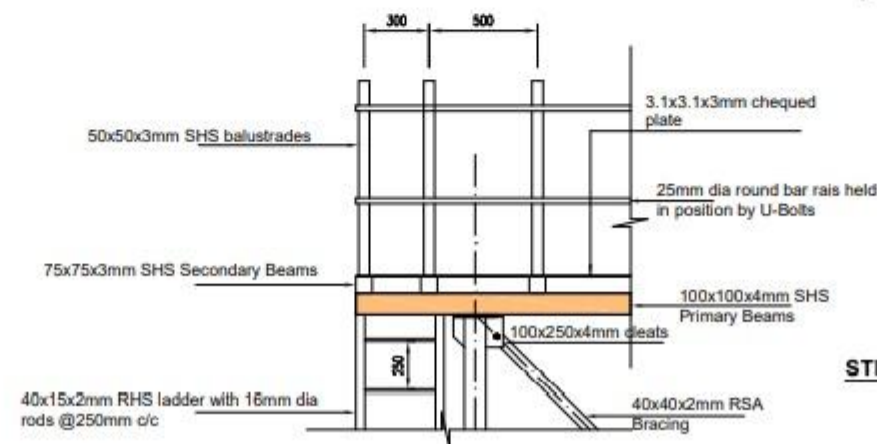
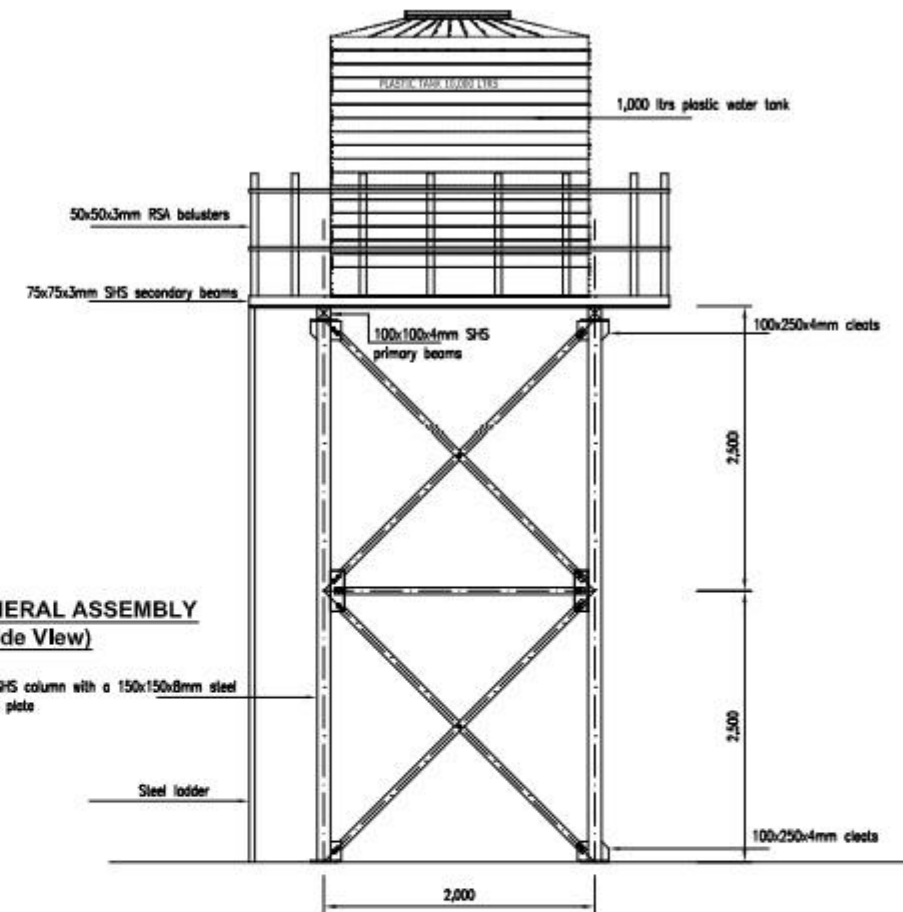
DOORS AND WINDOWS





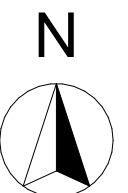
**TOWER GENERAL ASSEMBLY
(Side View)**

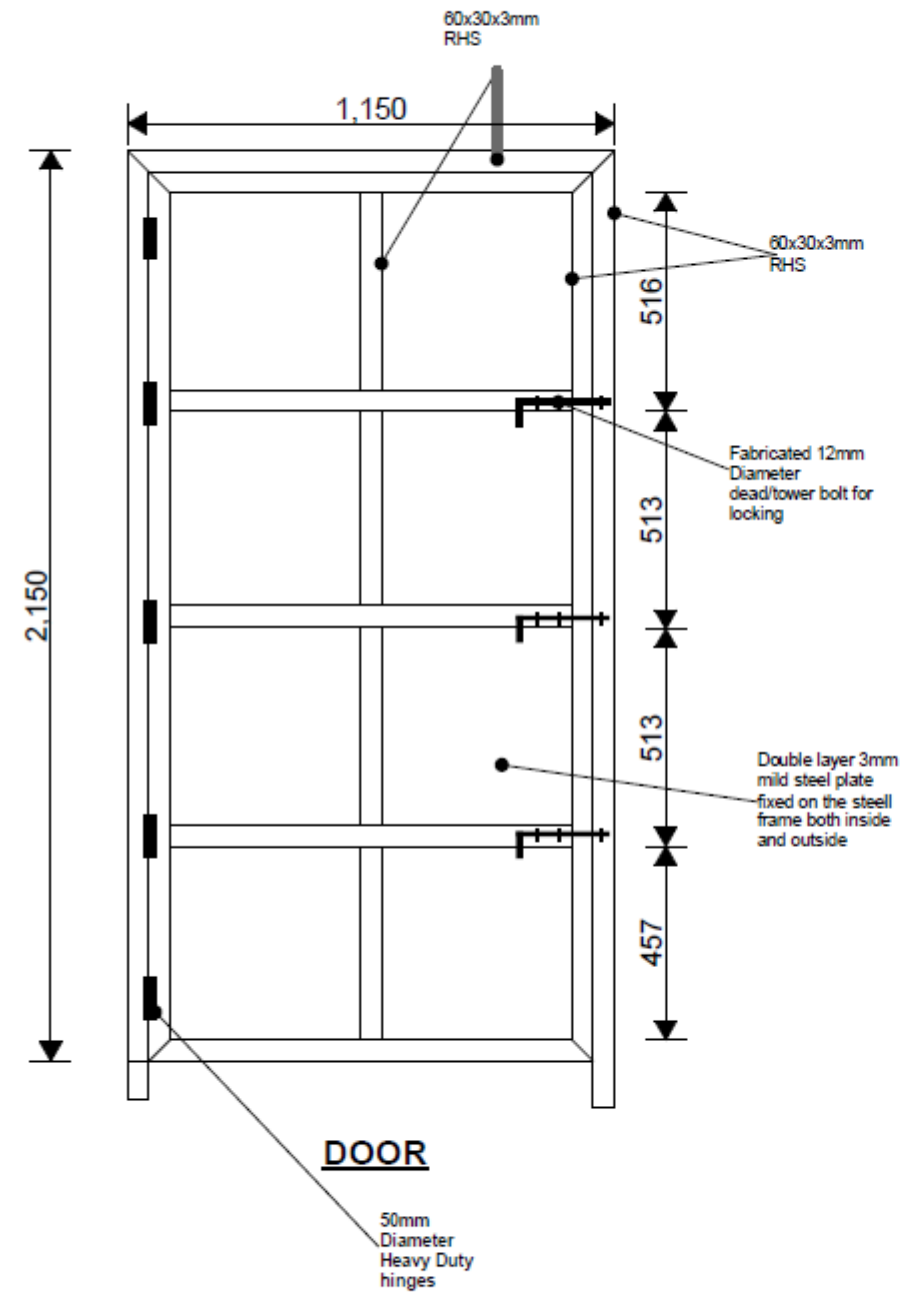
100x100x3mm SHS column with a 150x150x8mm steel top and bottom plate



**STEEL PLATFORM DETAILS
Detail 'A'**

TOWER DETAILS





SAFE DOOR DETAILS

