

Helping Babies Survive

Essential Care for Small Babies

ACTION PLAN

PREVENT INFECTION

Prepare for Birth

If birth outside the facility → Provide Essential Care

CLASSIFY

WELL



Maintain thermal care and support breastfeeding

<2500g and abnormal temperature or <2000g



Provide continuous skin-to-skin

Improve thermal care

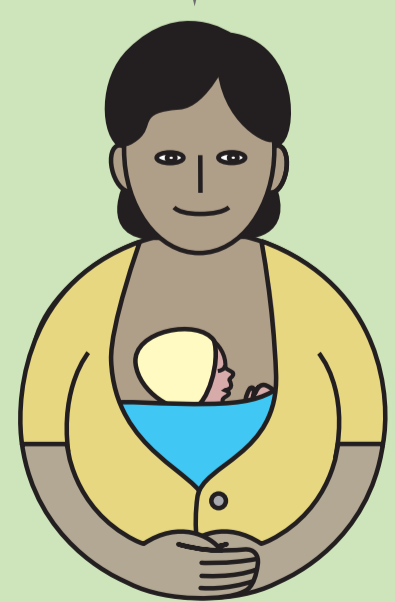
Not possible or ineffective

Consider alternative methods

Not improved

Assess routinely

Breastfeeding Normal temperature



Review home care and immunize

Poor feeding

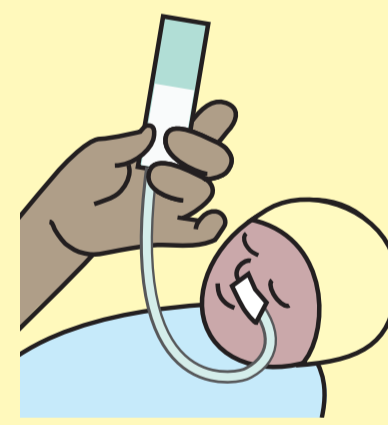


Express breast milk



Feed with cup

Not possible



Feed with Nasogastric tube

Problem

If at any time a DANGER SIGN presents, immediately give antibiotics and seek advanced care

UNWELL

PROBLEM

<1500 g

Apnea

Cord Infection

Jaundice

Feeding intolerance

Poor weight gain or excess loss

DANGER SIGNS

Fast breathing

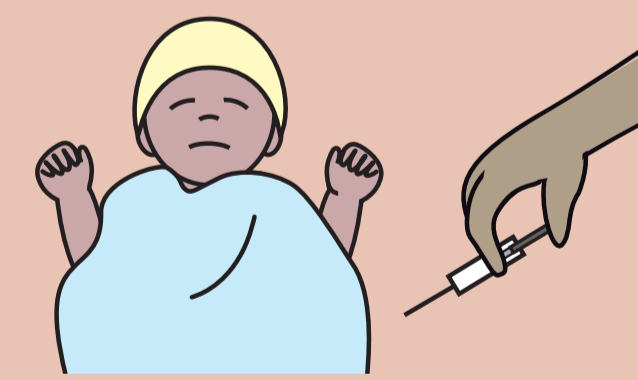
Chest indrawing

Temperature <35.5 °C >37.5 °C

Not feeding

No movement

Convulsions



Consider antibiotics



Give antibiotics

Stabilize for transport

Seek advanced care