

KENYA LONGITUDINAL SOCIOECONOMIC STUDY OF REFUGEES AND HOST COMMUNITIES (K-LSRH)

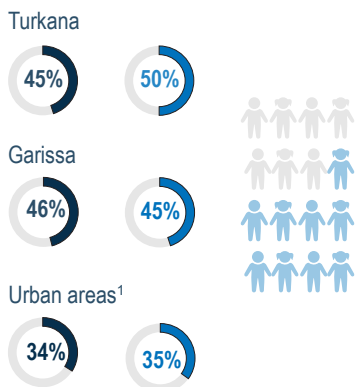
Summary of Findings from Wave One

ABOUT THE SURVEY

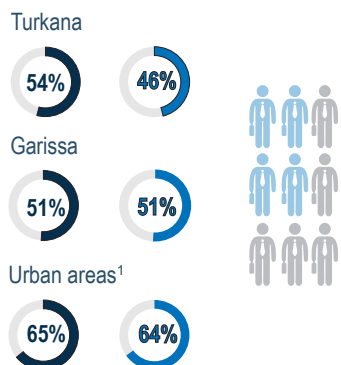
The Kenya Longitudinal Socioeconomic Study of Refugees and Host Communities (K-LSRH) is part of the Kenya Analytical Program on Forced Displacement (KAP-FD). It is a longitudinal panel survey tracking socioeconomic indicators of welfare for both refugees and hosts in areas with significant presence of refugees and asylum-seekers in Kenya. More than 9,000 households were surveyed in the first wave, which was completed by June 2023. The same households are expected to be tracked and interviewed across years to establish the panel, allowing understanding of their needs and conditions over time. The data will contribute to overall evidence needs for programs and policymaking.

● Refugee and Asylum Seekers ● Host

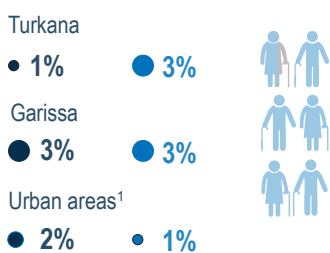
Children (Below 15 years)



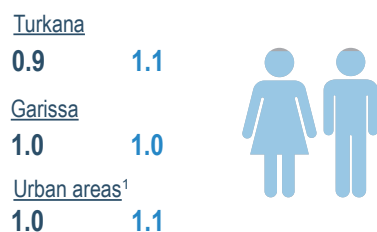
Working age (15 – 64 years)



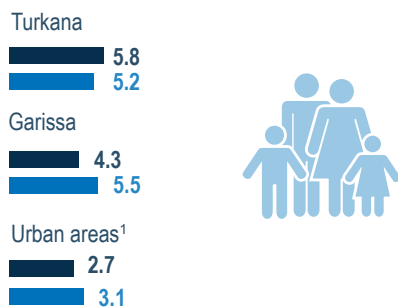
Elderly (65 and above)



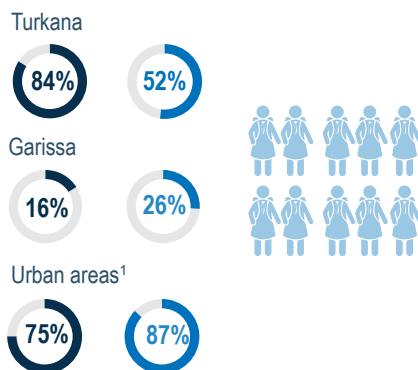
Sex ratio (female : male)



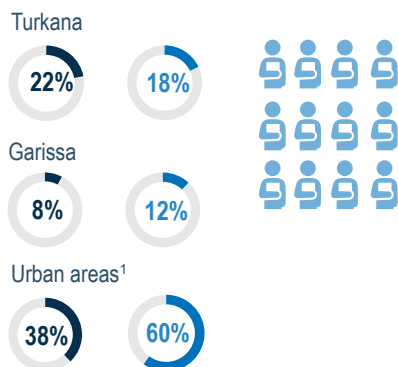
Household size



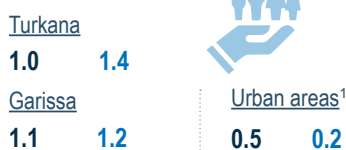
Primary net enrollment



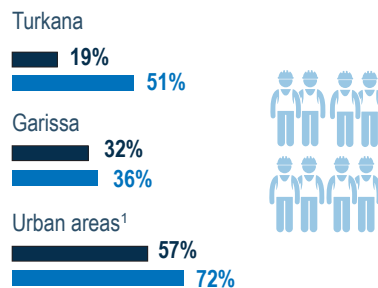
Secondary net enrollment



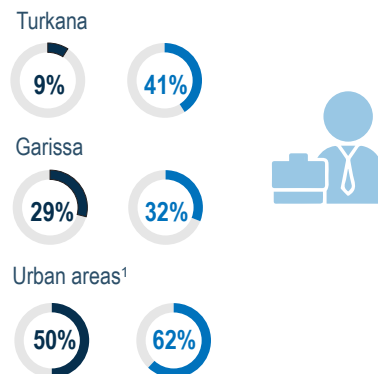
Dependency ratio



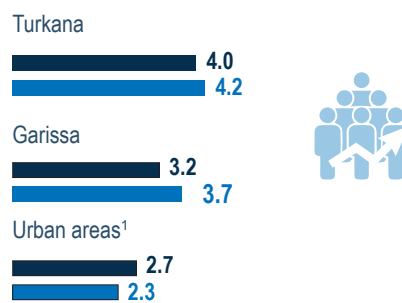
Labor force participation²



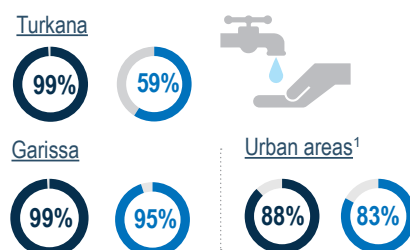
Employment rate³



Crowding index



Access to improved water



¹Urban areas¹ refer to selected areas in Mombasa, Nairobi, and Nakuru.

²Labor force participation rate is measured as individuals who are of working age (15 to 64 years), either currently working, or available for work and have looked for work in the past seven days.

³Employment rate is measured as individuals who are of working age (15 to 64 years), who have worked at least for one hour in the past seven days as a proportion of labor force.