

FORCED DISPLACEMENT SURVEY



© UNHCR/Colin Delfosse

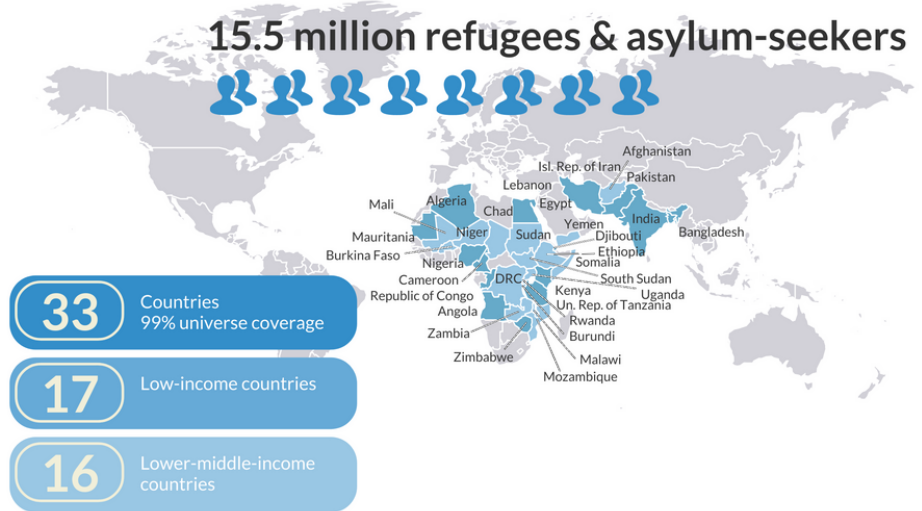
WHY

The Forced Displacement Survey (FDS) is UNHCR's new flagship household survey programme designed to standardize, streamline, and build on the existing UNHCR survey landscape to produce high-quality and timely data on people forced to flee. The FDS data series will be comparable across countries and over time and aligned with international statistical standards.

The data produced will be publicly available, and can be used to inform, design and prioritize programming; advance partnerships, including with donors and development institutions; provide indicators for global commitments (e.g., Global Compact on Refugees, SDGs, Grand Bargain), among others.

WHERE

The survey aims to cover about 99% of the global refugee and asylum-seeker population hosted in lower- and lower-middle income countries. South Sudan is the first country of implementation where data collection was completed in 2023. Pakistan, Cameroon, and Zambia are scheduled for completion in 2024.



**The boundaries and names shown and the designations used on this map do not imply official endorsement or acceptance by the United Nations.*

WHO

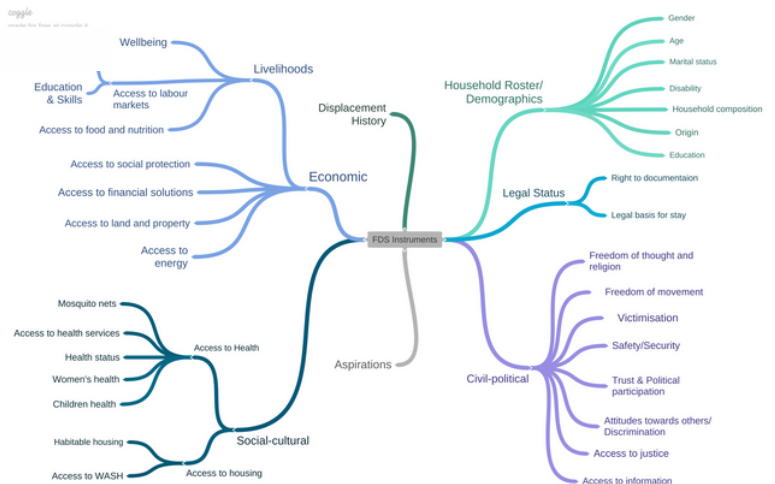
The FDS programme collects data on nationally representative samples of refugees and asylum-seekers as well as comparable data on the host population, i.e. nationals who live in proximity to the refugee population.

WHAT

As a multi-topic survey, the FDS collects household- and individual-level data on the socio-economic and living conditions of the target population (refer the adjacent image for a mind map of the FDS). Given the different contexts, data needs and resource envelopes, the FDS adopts a modularized approach, divided into core and non-core sections, that can be included or excluded based on the relevance of specific topics in each country.

HOW

The FDS is managed and implemented by UNHCR's Global Data Service and is supported financially and technically by the Division of Resilience and Solutions and the World Bank-UNHCR Joint Data Center on Forced Displacement. Data is collected through face-to-face household interviews by local partners.



High-level overview of topics covered in FDS

Scan here for more information on the FDS:

