

ANNEX-B-Bill of Quantities Jame Shifa Hosptial

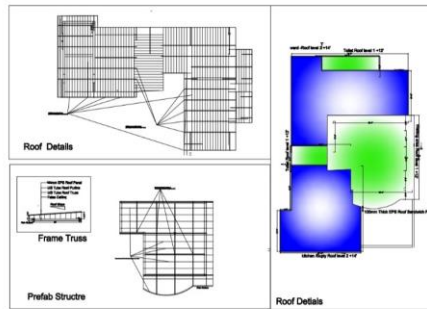
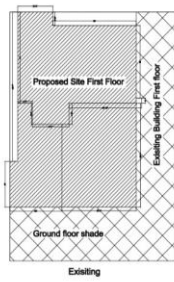
Sr No	Work Description	Qty	Unit
Dismantling works		The dismantling section is already agreed by Hosptial to be completed before the project start. Minor dismantling of brick and tiles works where required is included the below specification.	
Civil Works			
2.01	Providing and laying first class solid burnt brick masonry (Brick Strength:1800psi-2000psi) including scaffolding, raking out joints and curing in ground floor superstructure and i/c cost of testing Above 4.5" (115mm) nominal thick brickwork Cement sand 1 : 4		
i	Back side for washroom support	225	cft
ii	rising of wall by 2.5 feet	378.75	cft
iii	rising of wall by 8 feet	360	cft
iv	new wall	1328.25	cft
	Total	2292	cft
2.02	Providing and laying cement concrete using steel 4 bar #4 with ring bar in #3 at 6 inch spacing approved coarsesand and crushed aggregate 3/4" (19mm) and down gauge in pillarsand columns of any shape in super structure including compacting,curing, cost of form-work & its removal in basement underground floor. 8 Extra Columns & RCC flooring for	176.5	cft
2.03	Cement plaster using Coarse Sand on soffits of ceiling, cantilever slabs, sides and soffits of beams, walls and finsining works first floor including making edges, corners and curing. 1 : 4 walls plaster	4530	SFT
2.04	Structure Roof Girder,T-iron ,Tile 3 ich concrete and prefab wating area		
A	Providing and fixing M.S Girders Hot rolled Steel H Beam (8 inch (205mm) x 6 inch(152mm) 3mm thick) with max length up to 18 feet painted with two coats of red oxide and two coats of steel coated paint with fitting of approved make including cost of fabrication,cutting holes and making good the damages to walls. (450 RFT)	1350	KG
B	Providing and fixing of T & IRON Hot rolled Steel T Beam (web 38mm and flange 38mm thickness 3mm) painted with two coats of red oxide and two coats of steel coated paint with fitting of approved make including cost of fabrication,cutting holes and making good the damages to walls. (2300	3450	KG
C	Providing and laying first class burnt brick tile roofing laid in 1 : 6 cement sand mortar including 1 : 2 cement sand pointing underside of tiles including curing for Tee iron/girder roof (Cost of Tee iron/ girder not included) with proper slop as instructed	2500	sft
D	Providing and laying 1:2:4 cement concrete using approved coarse sand and crushed aggregate mad etc 3/4" (19mm) and down gauge in slabs including formwork and its removal, compacting and curing with proper slop as instructed and provsion of 4 inch PVC pipe for rain water length 3	575	CFT
E	Supply & Installation of EPS Prefabricated Roof: 100mm Thick EPS Roof Sandwich Panel With 15kg/m3 Fire Rated Polystyrene, Top 0.45mm Thk high rib PPGI Sheet and Bottom 0.45mm Thk Low Rib PPGI Sheet (Sheet Min 25 Micron DFT) . 1:10 Side Slop , GI U Channel Minimum Thickness 1.2mm (Powder Coated) ASTM A307/ A490 HSB Or Equivalent. ASTM Grade ss400. Purlins /Girts of ASTM A653 Grade 36, sheet A792 Coating AZM, High strength Bolts, Painting(Powder Coated), Joints plates with Walls and Purilin plates 4mm thick & Pulin 1.5mm thick, Including side Rain gutter 60 Rft connected with 4 PPRC three pipes connected with sewage line for Structure external Height: 14'-0" -Internal Clear Height: 11'-6" as per drawings including transportation and installation as per instruction and drawings	1000	SFT

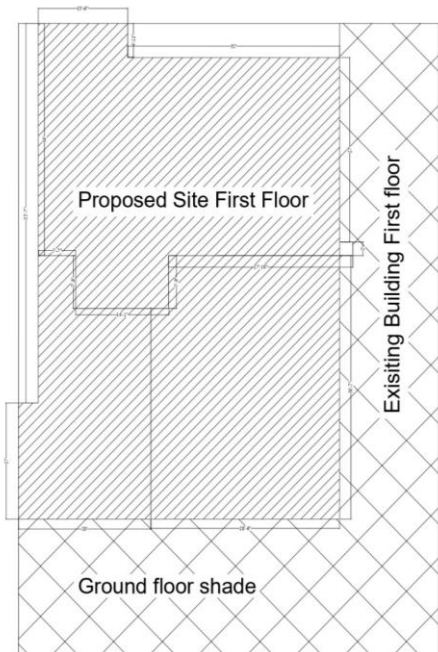
	Front Design matching with existing building		
F	50mm Thick Panel 0.75mm Thk high rib PPGI Sheet (Sheet Min 25 Micron DFT) including Steel frame to panels and hiding for design the sides of T-iron and Girder match with existing building design with required paint on top as per Instruction. Depth up to 5 feet and Length 100 RFT.	1	Job
2.05	Providing and Fixing Steel Stair Made of M.S Girders Hot rolled Steel H Beam 8 x 6 inch size 3 mm thick frame on both sides fixed into wall inner L section iron and bent plate 3mm diamond shape stair L shape width 4 feet upto height of 10 feet ,rise 6"and thread 12 inch side handrail Stainless steel pipe ,stair painted two coat with red oxides and steel coated paint including the price of steel door 18 gauge 4 x 7 feet as per approved	1	Job
2.05	Removing existing marbles and Providing and laying super white 24"x24" marble (ziarat white marble) floor including 6 inch skirting with fine dressed on surface without winding in ground floor and laid over 1" (25mm) thick cement sand mortar 1:2 setting tiles with portland cement slurry over cement mortar, jointing and washing the tiles with white cement slurry including curing, rubbing and polishing including the cost of	2461	SFT
2.06	Provide and lay Vitrified/ Porcelain/Ceramic Master tiles on floor with different sizes, Glazed or Matt, local or imported as directed by the Engineer-In-Charge, laid with 6mm thick layer of cement-based high polymer modified quick set tile adhesive (water based)Porcelain Tiles in flooring /Dado/Skirting		
i	walls 7 feet	2065	
ii	washrooms full height tiles	954	
	Total	3019	sft
	Stone Cladding:		
2.07	Providing & fixing/installing stone cladding of approved shape & design on the Exterior wall design combination of grey and yellow tiles of differnt size tiles in cement mortar 1:2. Stone size should be 12 inches in length and 1 to 2 inches in thickness.	1089	sft
2.08	providing PVC wall Panelling 9" wide and 10 ft long including all accessories of approved design in any color, shade and pattern in First Floors	1180	sft
2.09	P/L tiled false ceiling of size 595x595 mm metal grid of hot dipped galvanized steel sections. GI Metal Ceiling Lay in plain Tegular edge Global white color tiles of size 595x595 mm with 20% area perforations Faluse Ceiling as per approved desgin	2500	sft
2.1	Providing and fixing the UPVC Door/windows frame with 5 mm Clear Platic transparent glass with frost paper in sliding for windows and side opening for doors and including mesh sliding for windows including lock management as per instruction complete in all respect.		
i	Doors (1# D1, 6 # D2, 3#D3 and 1 sliding)	272	
ii	Windows (11# W1, 3#W2 , 3#V1)	438	
	Total	710	sft
2.11	Light circuit concealed/open wiring with length upto 75 ft. (25m) from distribution board to point/switch with 3x2.5 Sq.mm PVC insulated single core copper conductor Pakistan Cables, Pioneer, Newage or approved equivalent cables for offices/multi storeyed buildings.	30	P/Point
2.12	Wiring of 5 Amps. socket outlet with 4 sq.mm PVC insulated single core copper conductor cable including 3/4" (20mm) dia. PVC conduit, 8.7sq.mm (10SWG) copper wire as earth continuity conductor and wiring accessories such as bends, elbows, iunction boxes etc	20	P/Point
2.13	Supply and install 8-gang, 5 Amp, 250 Volt, fan regulator plate type moulded Clipsal/Schneider or equivalent imported switch including appropriate size plastic box to be fixed recessed in wall	10	P/Point
2.14	Supply and install combined 2/3 pin 5 Amps, 250 Volt switch socket unit including plastic box to be fixed recessed in wall. supply and instalation of 3 pin 15 Amp switch socket unit	20	P/Point
2.15	Supply and install electric ceiling light 12w Philips fitted in ceiling as per approved	40	Each
2.16	Supply and install 10" (250 mm) sweep exhaust fan including plastic louvers	3	Each

2.17	Supply & Installation of Zebra Curtains with rails with double roller runners, clamps, including cost of C.P. brass screws and rawl plugs	250	Sft
2.18	Supply and Install wall Mounted Split Air Conditioners inverter Energy Saver Model 1.5 Ton ,the pipe requirement drawings provided (approximate 30 feet in and out pipe) as approved equivalent to Gree ,LG or approved Supply & Installation of Socket For AC and required wiring complete in all	6	No
2.19	Supply and Install wall Mounted Split Air Conditioners inverter Energy Saver Model 1 Ton ,the pipe requirement as the the drawings provided (approximate 30 feet in and out pipe) as approved equivalent to Gree ,LG or approved Supply & Installation of Socket For AC and required wiring complete in all respect	2	No
2.2	Supply and install AC/DC 56" (1.42 m) sweep ceiling fan, copper wire with fan hook and dimmer/remove PAK fan complete with all accessories.	12	No
2.21	Provide, install, test and commission recessed wall mounting type distribution board fabricated from 16 SWG steel sheet, powder coated with approved color back box comprising one incoming MCCB TP/60A and outgoing 9 single phase MCB of various capacity 6 Nos 16 A, One 32A and 6 Nos 10 A breakers having overload & short circuit protection and of 6 KA braking capacity complete with internal wiring earthing, neutral link, termination blocks, phase indicating lights alongwith 500V voltmeter	1	No
2.22	Providing and fixing Kitchen cupboard fixed on Double layer with size 24" depth, 30 " height and L shape 22 feet length with approved design PVC 12mm thick sheet and frame complete and Top Ziarat white marble with cutting of sink 36" and stove 36" complete in all respect with plumbing pipe and exhaust systems.	1	Job

2.23	Complete fitting of plumbing works for Washrooms and Kitchen with the provision of P-Trap ,Water Closet Fregat 4006 White colour,Wash Basin 24" coloured ICL Futura 2041/60 ,wash Basin Stop Cock, English commode,open tab,using 4" Dia UPVC Drainage Pipes connecting with ground sewage line 20 feet below , connected by PVC water pipes 1"& 1.5"with fiber Tank and including complete brass shower set as approved	3	Job
2.24	Complete fitting of GAS pipe line for all location from main line using PVC pipe 1"/1.5"with valves 300 RFT pipe in kitchen, two in ward, admin office ,nutrition, three in wating area and open area as per instruction by the engineer.	1	Job
2.25	Providing and fixing LDPE overhead tank manufactured by Dura /marjan white color or equivalent on top of any floor 300 Gallon Tank (Capsule type & white color) including all pipes 4" pprc pipe 20 feet and taking out from the main wall to outside including P-trap with value control complete in all respect	2	No
2.26	Supply & Installation of Water Closet Fregat 4006 White colour complete in all respection	3	No
2.27	Provide and fixing of Lasani sheets for cabinets with 2-1/2" x1-1/2" wood sections for frame 2'x 2' grid vertically and horizontally wood frame, covered with 18mm thick sheets,finishing with super gloss sheets, Including all items (brass handle, Locks, and Glass 5mm as required per degsin) and charges to complete the work as per specification. Wood Make: (Kail wood/Partal wood)Pvc sheet Make: (Al-Noor Lasani/ZRK Lasani)	288	SFT
2.28	Providing and fixing at Site 1.5 HP Electric Motor of KSB, Grandfos, Siemens or approved equivalent (similar specifications), complete in all respects.	1	No
2.29	Supply & Installation of Wash Basin 24" coloured ICL Futura 2041/60 ,wash Basin Stop Cock Complete In All Respects	3	No
2.3	Providing and Nasgas three burner cooking stove complete with all respect connecting with near by G.I pipe gas connection	1	No
2.31	Providing and stainless steel sink double 36" with required plumbing work complete in all respect	1	No
2.32	Supply and fix NASGAS Gyser 35 gallons capacity gas items including all accessories and fittings such as G.Ipipe, rubber pipe, specials, gas stop cocks etc	2	No
2.33	Fire extinguishers :10 Liter fire extinguisher A class A fire extinguisher typically uses dry powder to produce foam and a dry nitrogen propellant	2	No
2.33	Visiblity Board - size 48"x 36" steel frame with Alluminum coat plate with frame fixed on wall and direction with given text	1	No
2.34	The preparation of complete as-built architectural drawings, including detailed plans for electrical works and plumbing systems, is required in both hard copy and AutoCAD file formats. Additionally, a comprehensive report must be provided, outlining the project's progress, showcasing the before and after completion status, and including all necessary handover documents. This documentation is essential for finalizing the project and ensuring accurate records for future reference and maintenance.	1	Job
2.35	The preparation of complete as-built architectural drawings, including detailed plans for electrical works and plumbing systems, is required in both hard copy and AutoCAD file formats. Additionally, a comprehensive report must be provided, outlining the project's progress, showcasing the before and after completion status, and including all necessary handover documents. This documentation is essential for finalizing the project and ensuring accurate records for future reference and maintenance.	1	Job

Jame Shifa Hospital



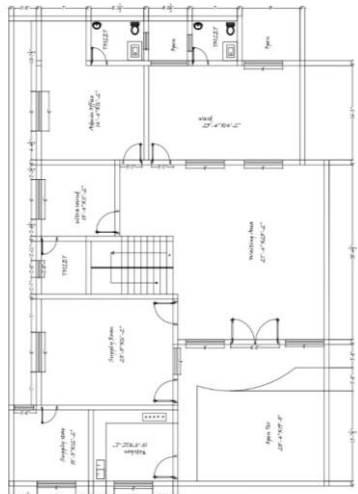


Proposed Site First Floor

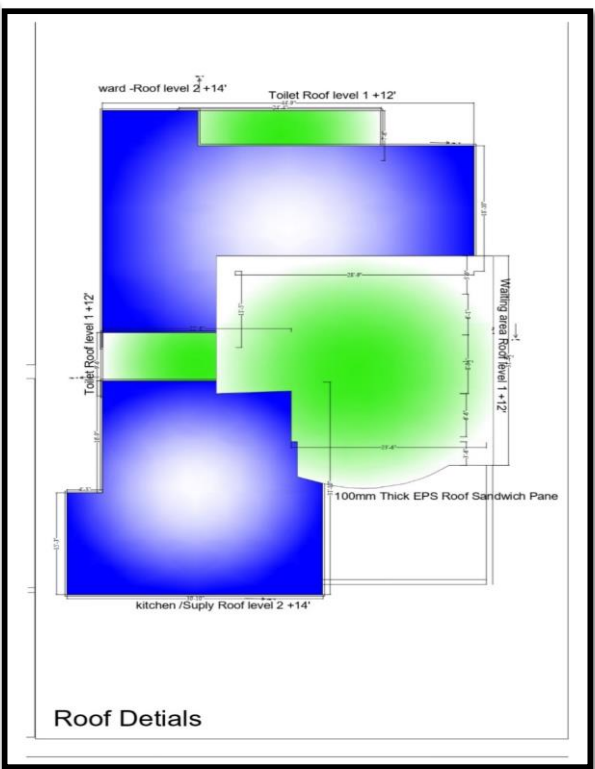
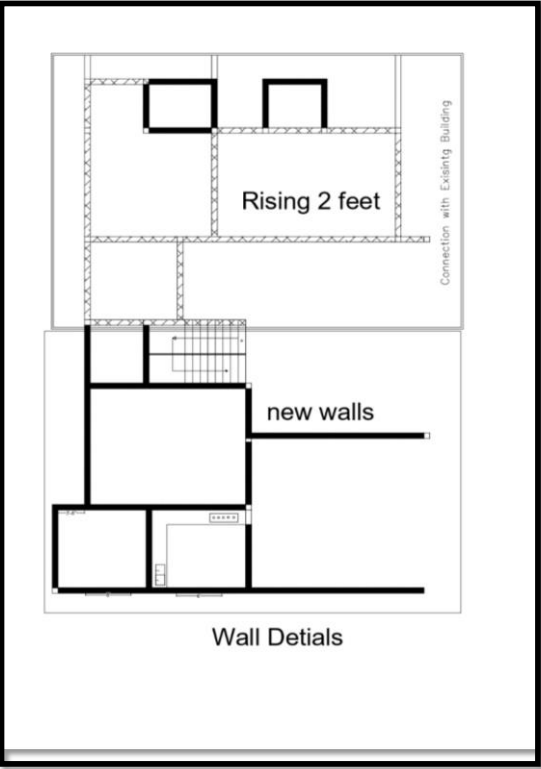
Existing Building First floor

Ground floor shade

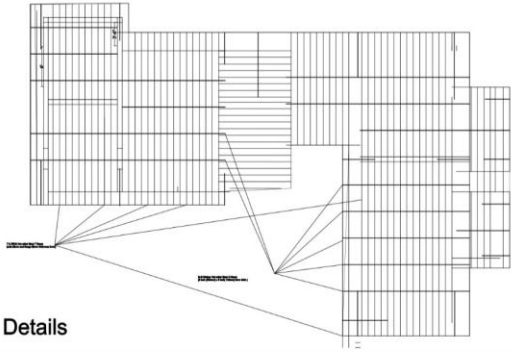
Existing



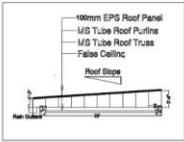
Plan



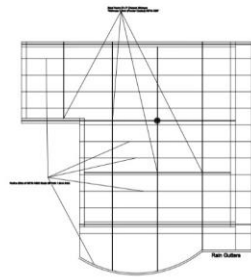
Roof Details



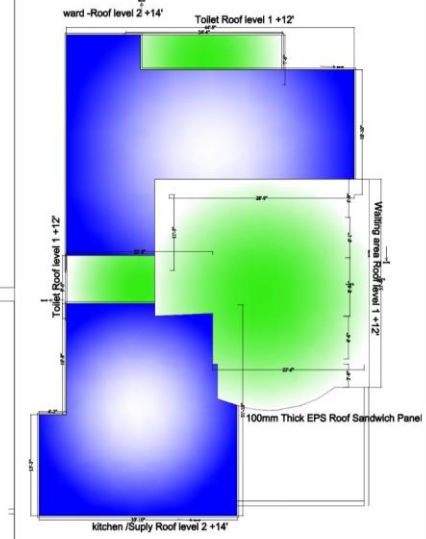
Frame Truss

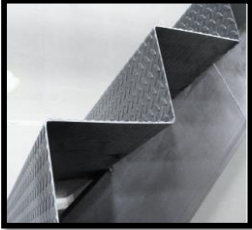
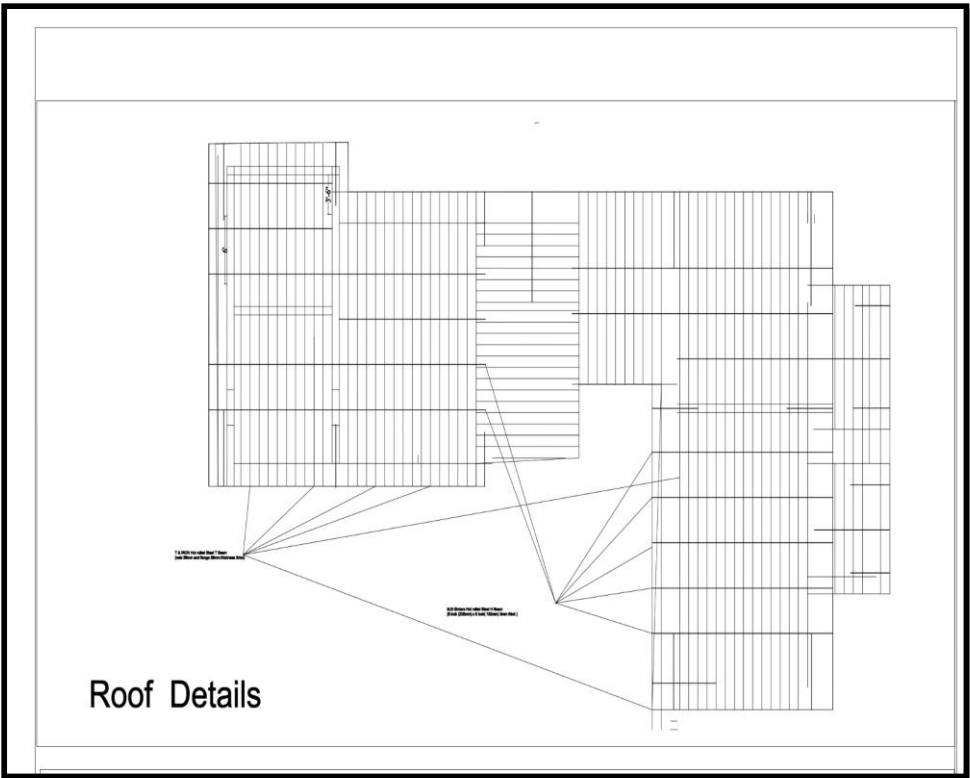


Prefab Structre

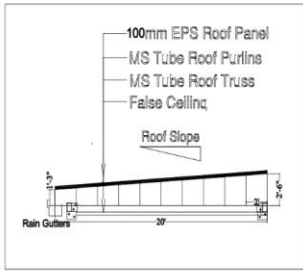


Roof Details

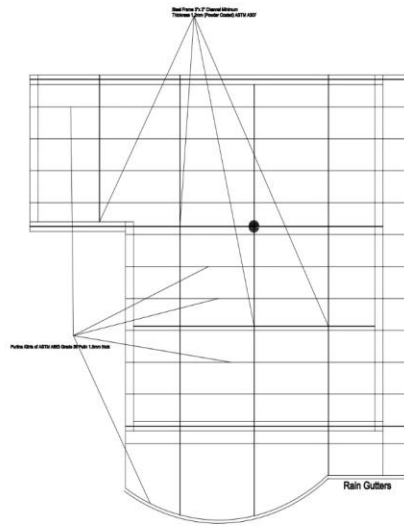




Stair



Frame Truss



Prefab Structre