

**BILL OF QUANTITIES AND PRICE PROPOSAL (RFQ-SOQ-2024-022)**

<b>IMPROVING SECURITY MEASURES AT SEHER OFFICE, QUETTA</b>					
<b>S.NO.</b>	<b>DESCRIPTION</b>	<b>QTY</b>	<b>UNIT</b>	<b>RATE (PKR)</b>	<b>AMOUNT (PKR)</b>
<b>1</b>	<b>Safe room door and ventilaors fixing (1&amp; 4)</b>				
1.10	Fabricate and fix purpose made steel metal door size 6.8 ft x 3.5 ft made of 8mm thick plate welded on 1.5" x 1.5" x 3mm steel angle section and 2 middle bracing, complete with 2"x 2" x 4mm steel angle door frame, high load hinges, 6mm thick bushes, anchored to wall with 6mm x 4" long Rovel bolts strong enough to take door load, horizontal/vertical strong tower bolts and handles fabricated from 1" (25mm) diameter solid steel , including two coat of red oxide and two coat of oil paint , repair any damages to walls if any as per instruction.	1	No		
1.20	Fabricate and fix purpose made sliding steel metal Ventilator in room size 4 ft x 2 ft made of 8mm thick plate welded on 1.5" x 1.5" x 3mm steel angle section and 3 middle bracing, complete with high load rollers and 2 sliding rails each 6 ft length steel angle iron size 2" x 2" x 4mm, rails to be anchored to wall with 6mm x 4" long Rovel bolts strong enough to take the door load, horizontal/vertical strong tower bolts and handles fabricated from 1" (25mm) diameter solid steel , including two coat of red oxide and two coat of oil paint , repair any damages to walls if any as per instruction	1	No		
1.30	Fabricate and fix purpose made sliding steel metal Ventilator in washroom size 6 ft x 2 ft made of 8mm thick plate welded on 1.5" x 1.5" x 3mm steel angle section and 3 middle bracing, complete with high load rollers and 2 sliding rails each 6 ft length steel angle iron size 2" x 2" x 4mm, rails to be anchored to wall with 6mm x 4" long Rovel bolts strong enough to take the door load, horizontal/vertical strong tower bolts and handles fabricated from 1" (25mm) diameter solid steel , including two coat of red oxide and two coat of oil paint , repair any damages to walls if any as per instruction	1	No		
<b>2</b>	<b>Closing Gaps interview rooms</b>				
2.10	Fabricate and Fix steelness steel grill size made of 4mm x 4 mm solid bars, welded in box shape pattern at 9 inches center's both way, fixed on 12" x 12" x 3mm steelness steel retangular section frame, fixed into wall with 6mm x 4" long Rovel bolts as approved by Engineer incharge including fittings, making good two coat of red oxide and two coat of oil paint without the damages to walls				
	Interview room 1 & 6 size (8.5'x 4')	2	No		
	Interview room 2,3,4,5 size (7.5'x 4')	4	No		

**BILL OF QUANTITIES AND PRICE PROPOSAL (RFQ-SOQ-2024-022)**

<b>IMPROVING SECURITY MEASURES AT SEHER OFFICE, QUETTA</b>					
<b>S.NO.</b>	<b>DESCRIPTION</b>	<b>QTY</b>	<b>UNIT</b>	<b>RATE (PKR)</b>	<b>AMOUNT (PKR)</b>
<b>3</b>	<b>Sliding Steel Gril doors (3 &amp; 13)</b>				
3.10	Fabricate and Fix solid steel grill with Mesh Sliding Door size made of 4mm x 4 mm solid bars, welded in box shape pattern at 9 inches center's both way, fixed on 12" x 12" x 3mm steel retangular section frame, fixed into wall with 6mm x 4" long Rovel bolts sliding rails where Possible each 8 ft length steel angle iron size 2" x 2" x 4mm, rails to be anchored to wall with 6mm x 4" long including with Brass inter-Lock as approved by Engineer incharge including fittings, making good two coat of red oxide and two coat of oil paint without the damages to walls.				
	New interview room in waiting area	1	No		
3.20	Strenthening & Fabricate and Fix window and ventilators grill size made of 4mm x 4 mm solid bars, welded in diamond shape pattern at 5 inches center's both way, welded on 1.5" x 1.5" x 3mm steel angle section frame, fixed into wall with 6mm x 4" long Rovel bolts as approved by Engineer incharge including fittings, making good two coat of red oxide and two coat of oil paint without the damages to walls.				
	Ventilators 4.5' x 2'	2	No		
<b>6</b>	<b>Strenthening vehicle gate by Boom barrier</b>				
6.10	Fabricate and Fixing of boom barrier four now Nos of Girder 8" x 4" Height 5 feet (2 feet fixed in Ground and base plate), Barrier with double pipe 6" dia G.I required for length 16 feet with rolling frame fixed on a girder with load capacity box (size 30"x30"x30" filled concrete) clear passage for any type of vehicle complete in all respect including two coat of red-oxide and three coat of oil paint as per approved pattern fixed in ground 2 feet deep in concrete ratio 1:2:4 (size 2'x2'x2') as per instruction provided by incharge.	1	No		
<b>7</b>	<b>Turnstile gate</b>				
7.10	TURNSTILE Gate: one-way, Mechanical, 90 in Overall Ht, steel Coated spray Finish  Operating Voltage24V DC Operation Mechanical Operation Direction one-Way control by locking button Overall Height90 in Overall Length64 in Overall Width57 in Exit Style Locking control Material G.I Hollow rectangular 4" Pipes, Circular Solid 1.5" pipes, top frame shade with 16 gauge g.I sheet fixed with baseplate 3mm thick in the ground with concrete and 4 inch rovel bolt Finish : Red oxide three coat and steel sprav-coated	1			

**BILL OF QUANTITIES AND PRICE PROPOSAL (RFQ-SOQ-2024-022)**

<b>IMPROVING SECURITY MEASURES AT SEHER OFFICE, QUETTA</b>					
<b>S.NO.</b>	<b>DESCRIPTION</b>	<b>QTY</b>	<b>UNIT</b>	<b>RATE (PKR)</b>	<b>AMOUNT (PKR)</b>
<b>8</b>	<b>Emergency Exit Gate</b>				
8.10	Fabricate and fix purpose made steel metal door size 6.8 ft x 3.5 ft made of 8mm thick plate welded on 1.5" x 1.5" x 3mm steel angle section and 2 middle bracing, complete with 2"x 2" x 4mm steel angle door frame, high load hinges, 6mm thick bushes, anchored to wall with 6mm x 4" long Rovel bolts strong enough to take door load, horizontal/vertical strong tower bolts and handles fabricated from 1" (25mm) diameter solid steel, including two coat of red oxide and two coat of oil paint, repair any damages to walls if any as per instruction.(including cost of two Door would require Cutting brick wall 9 inches to provide a passage for door repairing wall with out damaging to wall.)	1	No		
<b>9</b>	<b>Aluminum Ladder</b>				
9.10	Supply and Provision of aluminum telescopic straight Ladder having a capacity of 150 KG Load, Foldable with material Aluminum adjustable height, aluminum alloy pedals, pipes and safety locks and light weight as per approved	1	No		
<b>10</b>	<b>Fire Extinguishers</b>				
10.10	50 Liter Wheeled trolley fire extinguisher A class A fire extinguisher typically uses dry powder to produce foam and a dry nitrogen propellant.	2	No		
	<b>GRAND TOTAL (PKR)=</b>				

**Company Name:** \_\_\_\_\_

**Authorized Person & Title:** \_\_\_\_\_

**Signature and Stamp:** \_\_\_\_\_

**Date:** \_\_\_\_\_

**BILL OF QUANTITIES AND PRICE PROPOSAL (RFQ-SOQ-2024-022)**

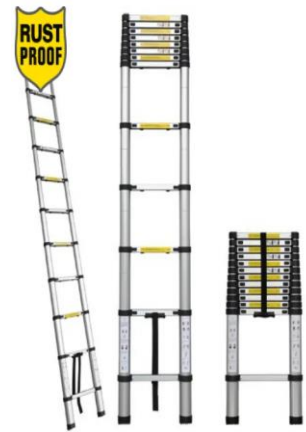
IMPROVING SECURITY MEASURES AT SEHER OFFICE, QUETTA					
S.NO.	DESCRIPTION	QTY	UNIT	RATE (PKR)	AMOUNT (PKR)



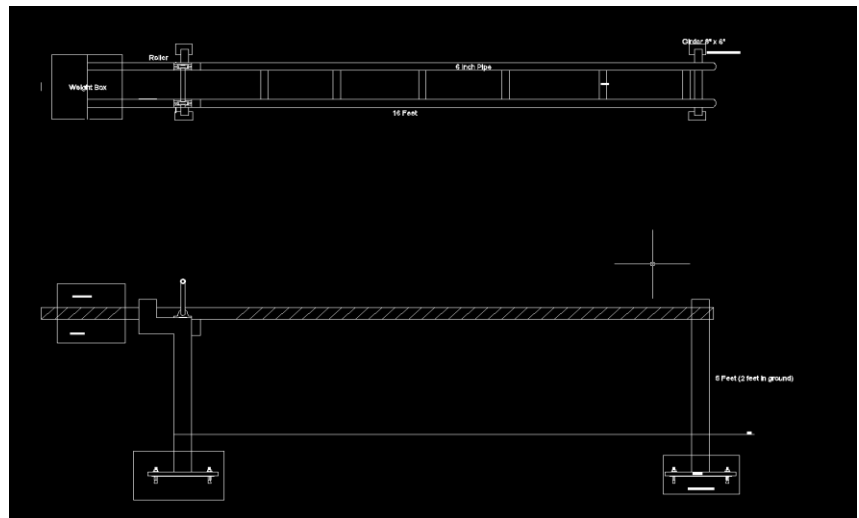
Steel Door



stainless steel Grill



Ladder



**BILL OF QUANTITIES AND PRICE PROPOSAL (RFQ-SOQ-2024-022)**

IMPROVING SECURITY MEASURES AT SEHER OFFICE, QUETTA					
S.NO.	DESCRIPTION	QTY	UNIT	RATE (PKR)	AMOUNT (PKR)

Steel door with Mesh

Barrier

**BILL OF QUANTITIES AND PRICE PROPOSAL (RFQ-SOQ-2024-022)**

**IMPROVING SECURITY MEASURES AT SEHER OFFICE, QUETTA**

S.NO.	DESCRIPTION	QTY	UNIT	RATE (PKR)	AMOUNT (PKR)
-------	-------------	-----	------	------------	--------------



Turnstile Gate