

Romania

February 2022

The Government fosters a favourable protection environment where persons of concern enjoy protection and solutions, and refugees benefit from integration prospects and community support.

UNHCR continues its strategic engagement with key stakeholders to expand protection and solutions, including through the [Emergency Transit Centre \(ETC\)](#).

Romania experienced an increase in arrivals in 2021, with 59 per cent more asylum applications lodged than in 2020 and a 17 per cent increase in the refugee population.

POPULATION OF CONCERN*

Refugees	3,776
Asylum-seekers	1,723
Stateless persons	314

TOP THREE COUNTRIES OF ORIGIN*

Refugees		Asylum-seekers	
Syrian Arab Republic	2,121	Afghanistan	848
Iraq	532	Syrian Arab Republic	207
Somalia	208	Iraq	207

*Data source: UNHCR 2020 Global Trends Report and UNHCR [data finder platform](#)

UKRAINE SITUATION

At the time of updating this fact sheet, in light of the rapidly deteriorating situation and war in Ukraine, UNHCR is ramping up its response and capacity in Ukraine and neighbouring countries, including in Romania.

UNHCR estimates that up to 4 million refugees may flee Ukraine, with more than 650,000 people having already crossed an international border in search of safety from 24 to 28 February.

UNHCR declared a Level 3 Emergency for Ukraine and a Level 2 Emergency for neighbouring countries on 25 February. UNHCR and OCHA jointly [launched](#) the [Humanitarian Flash Appeal](#) and the [Regional Refugee Response Plan](#) for the Ukraine situation on 1 March.

HIGHLIGHTS

Rise in asylum requests, refugees

9,813 asylum requests were submitted in 2021, 59 and 279 per cent more than in 2020 and 2019, respectively. The refugee population increased by 17 per cent by end 2021 compared to end 2020.

Increased access to livelihoods

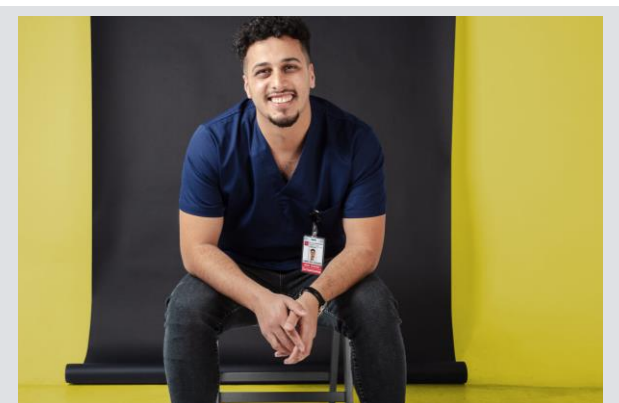
Twenty-three refugees were integrated into the workforce through the IKEA Employability Programme in 2021. The project will continue in 2022. In addition, over 50 refugees per year received citizenship in recent years.

Access to higher education

Five Refugee Scholarships from three of the Top 5 universities were granted in Romania since 2019, including one in January 2022.

3,400+ RSTs facilitated via ETC

Since 2008, the [ETC](#) has offered short-term stay to 3,400+ refugees in urgent need of resettlement (RST) who could not remain in the first country of asylum.



Refugee Doctors fight against COVID-19 in Romania

The story shows the portraits of Refugee Doctors fighting in the frontline against COVID-19 in Romania and giving back to their host community. ([Read more](#))

Key Priorities

- Access to territory and asylum procedures:** Monitoring and advocacy for unhindered access to territory and asylum procedures for people in need of international protection and capacity-building to ensure adequate standards in law and practice.
- Protection:** Enhance mainstreaming of gender-based violence (GBV) prevention, identification, and response; improve inclusion for multi-stakeholder response; and promote effective case management.
- Child protection:** Advocate for coherent child protection legislation, best interest procedures, and provide capacity-building for relevant authorities.
- Resettlement and complementary pathways:** Advocacy and support to enhance the resettlement programme and use of complementary pathways, as pledged at the 2019 Global Refugee Forum; and provision of tailored-made assistance to refugees hosted at the ETC while they await onward departure to the resettlement country.
- Integration:** Data-driven advocacy, engagement, and capacity-building to enhance refugees' access to housing, labour market, education and language training. Support for refugees on naturalization, family reunification and access to integration services. Promote refugee participation by fostering community empowerment initiatives.
- Education:** Engagement with academia and other actors to facilitate refugees' access to education (scholarships) and public awareness (UNHCR Teaching Kit).
- Public awareness and attitudes:** Promote a welcoming environment, create empathy and mobilize action through conventional media and social media engagement, public events and various communications partnerships.

Working with Partners

- Supporting authorities (i.e. **Immigration, Border Police, Child Protection Authority**) to enhance their capacity of delivering quality protection and assistance to persons of concern.
- Strengthening civil society capacity to advocate for and intervene in asylum cases, supporting the **NGO Coalition for the Rights of Refugees and Migrants** and engaging in joint advocacy with NGOs. UNHCR has funded partnerships with four NGOs: **AIDRom, CNRR, CSCM** and **ICAR**.
- External engagement:** Strengthening and diversifying partnerships with institutional actors, municipalities, academia and research institutions to address the challenges of refugee integration. Develop partnerships with private sector entities, high-profile supporters, diplomatic community and civil society to foster awareness of refugee protection and UNHCR's work.

Statelessness

- Advocacy for the lifting of Romania's reservations to the 1954 Convention on the Status of Stateless Persons and to establish statelessness determination procedures.

UNHCR Presence in Romania

Personnel:

10 National Staff
 2 International Staff
 4 Affiliate Workforce

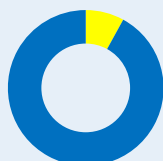
Offices:

1 Country Representation
 1 Field Unit in Timisoara

Financial information (22 February 2022)

Financial requirements
USD 2.5 M*

Funding gap 92%
2.3 M



Funded 8%
0.2 M

*This amount refers to the initial budget approved by UNHCR's Executive Committee for 2022, prior to the latest hostilities in Ukraine.

UNHCR is grateful to the donors of unearmarked and softly earmarked contributions to the 2022 global programmes. Donors of USD 10 million or more are:

Sweden | Norway | Netherlands | Denmark | Germany | Switzerland | Belgium | Ireland

Unearmarked contributions provide UNHCR with vital flexibility in determining how best to protect and assist persons of concern who are in the greatest need or at the greatest risk.