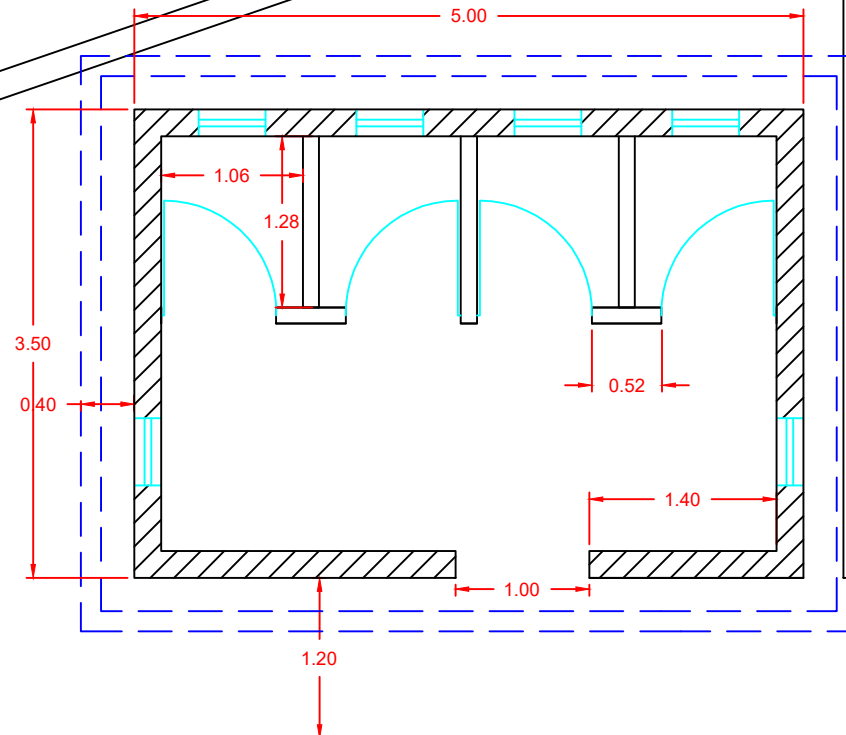


Existing Fence



Septic Tank

Existing Building



UNHCR

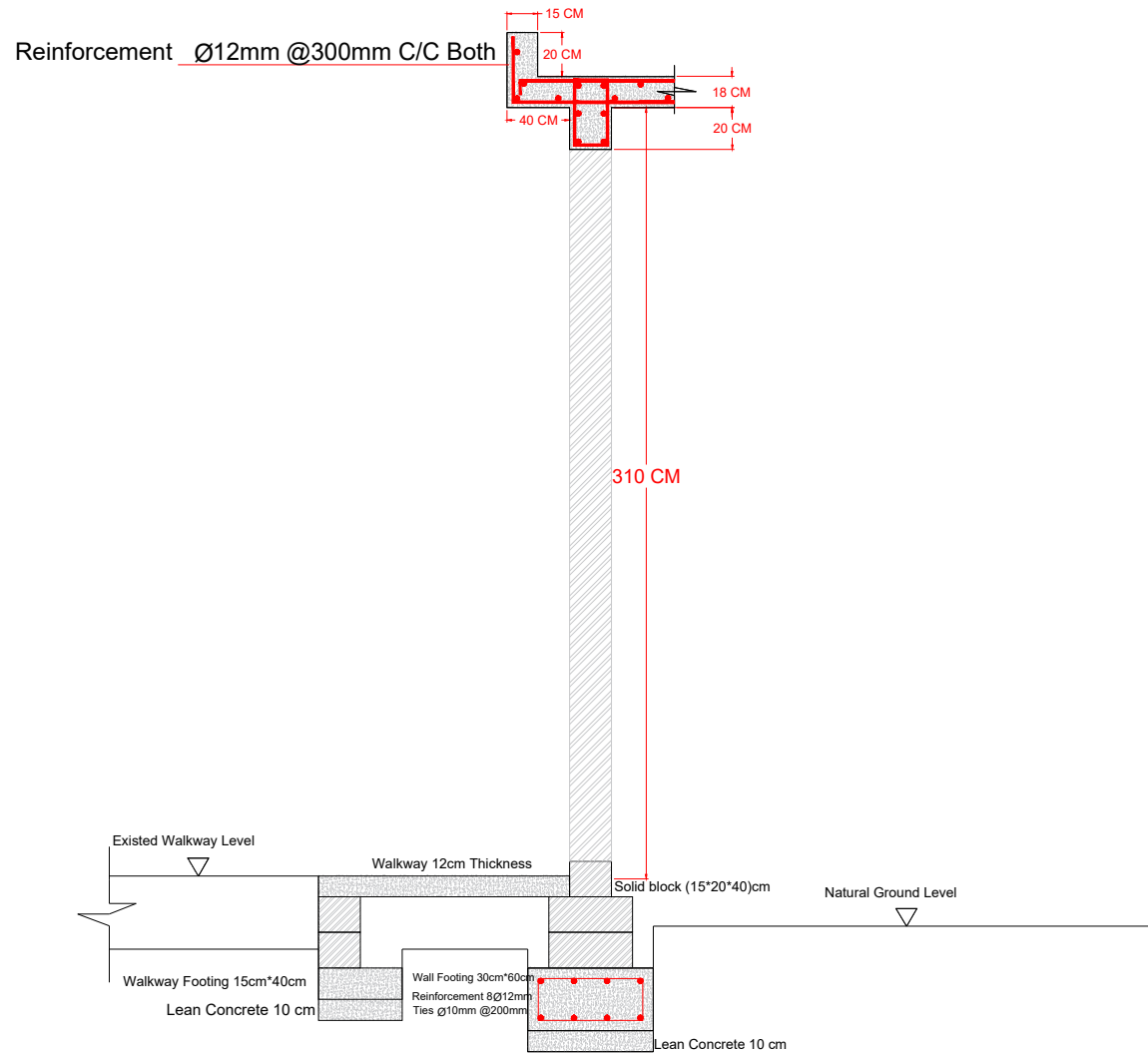
المفوضية السامية للأمم المتحدة لشؤون اللاجئين

Proposed drawing

Drawn by : KURDS Technical Unit

Sheet No. 1

Construction of wash facilities in Pirash school in Kasnazan/ Erbil



UNHCR

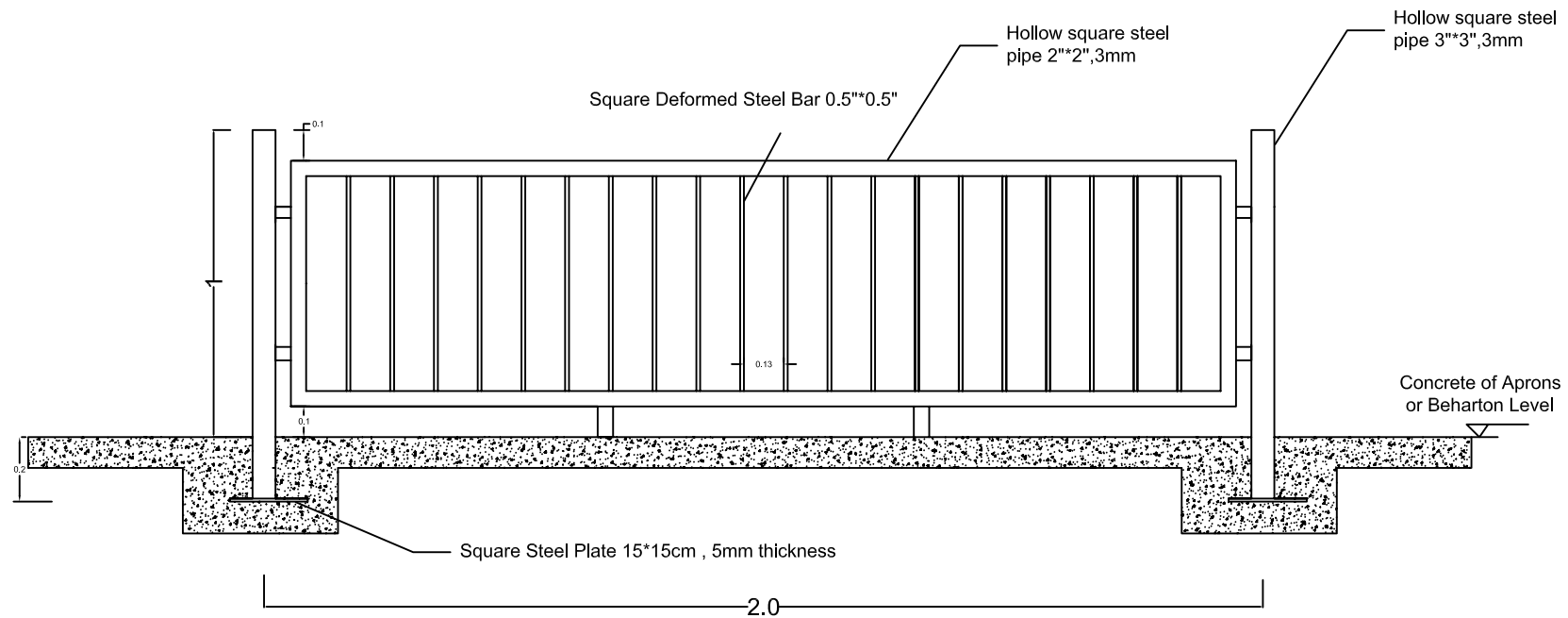
المفوضية السامية للأمم المتحدة لشؤون اللاجئين

Wall section, Wall Footing & beam

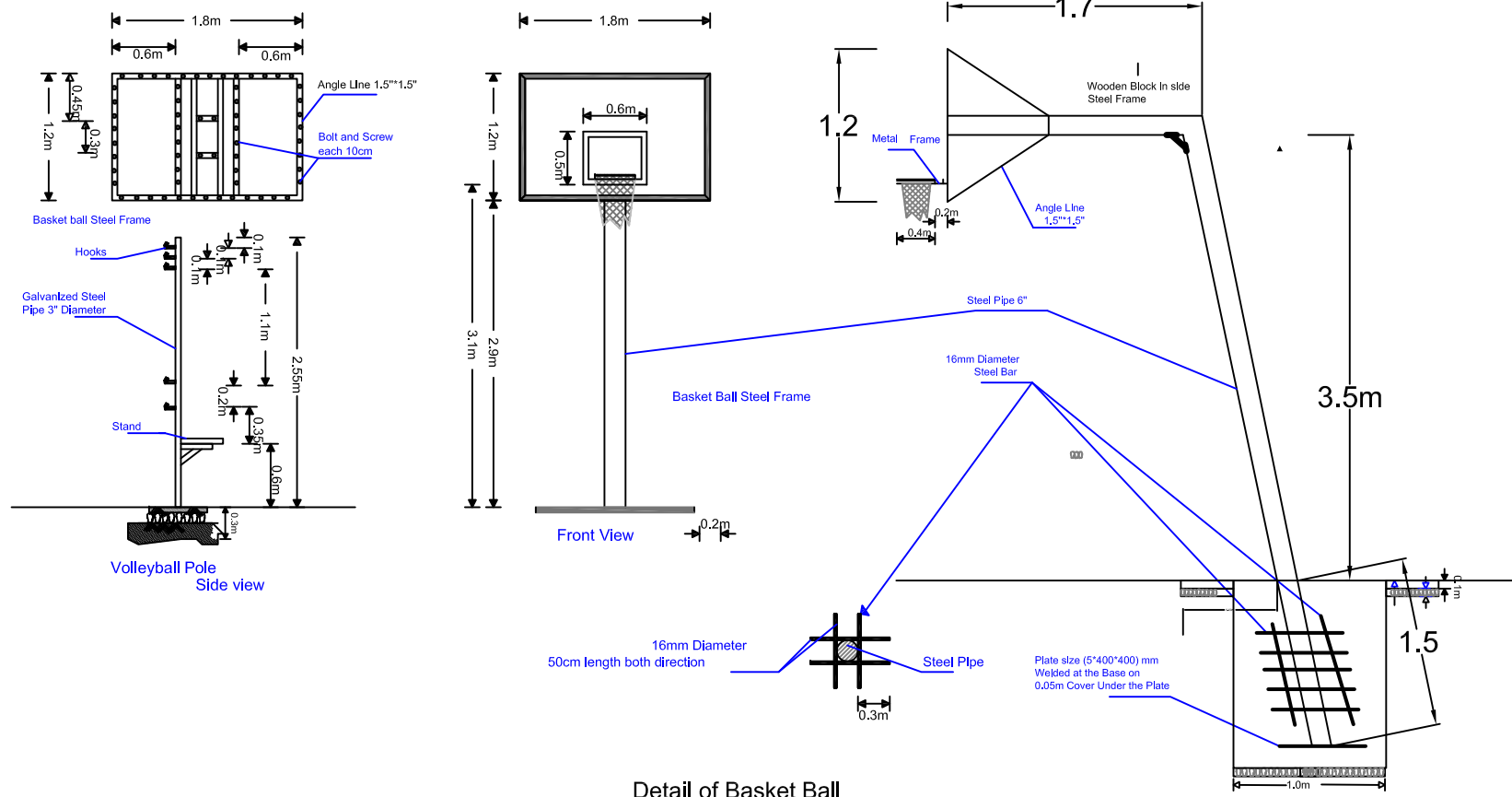
Drawn by : KURDS Technical Unit

Sheet No. 2

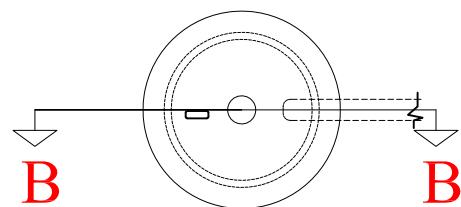
Construction of wash facilities in Pirash school in Kasnazan/ Erbil



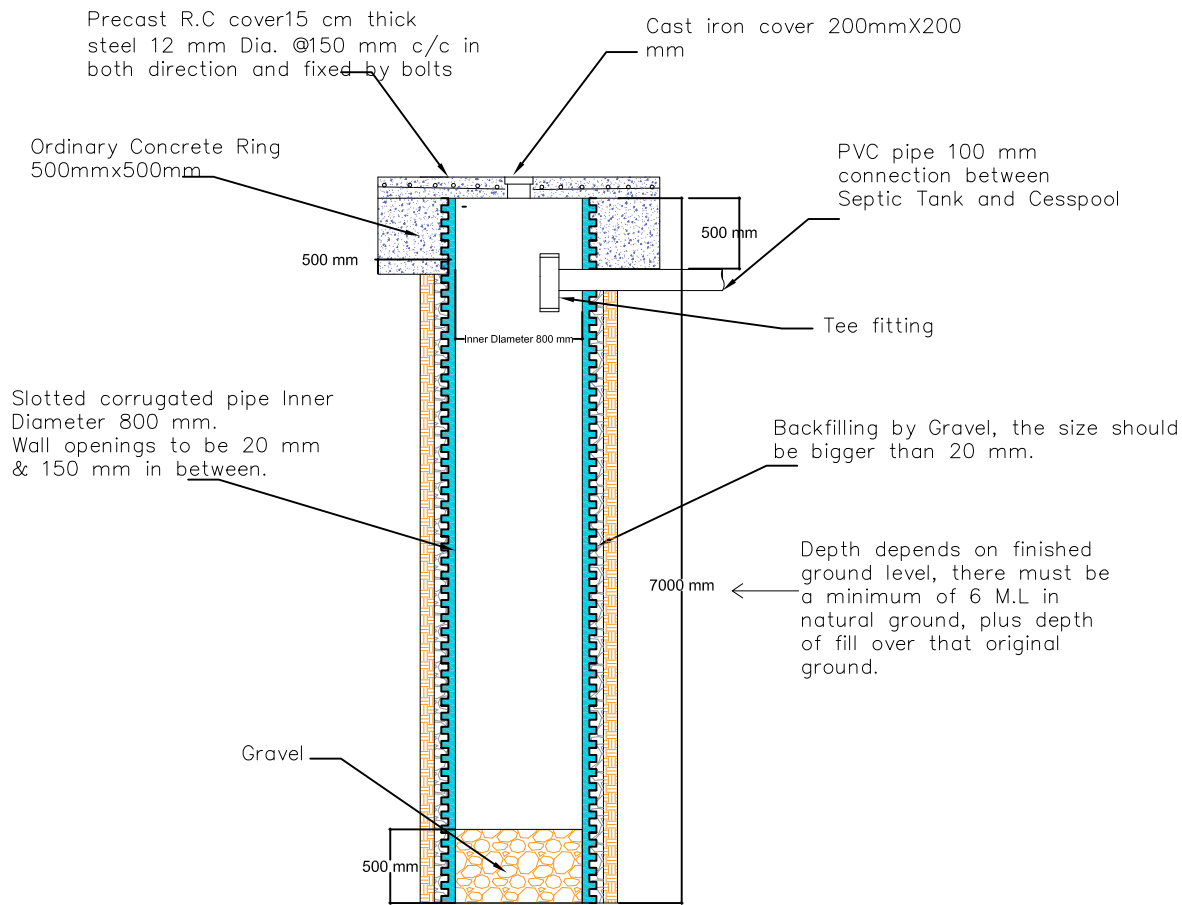
Hand Rail For Entrance Walkway and Aprons



Detail of Basket Ball

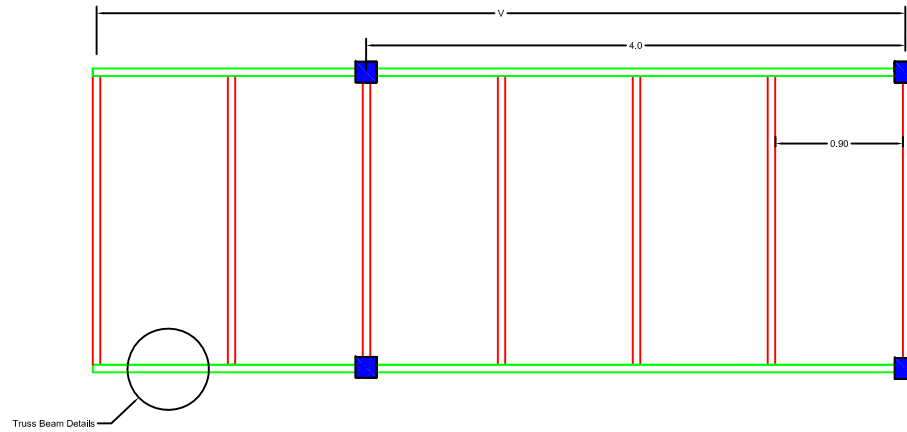





Top view Cesspool

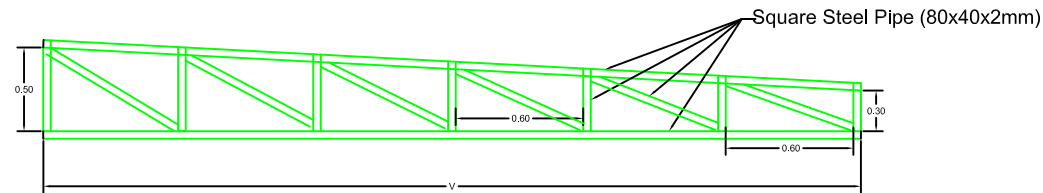


Section B-B Corrugated pipe Cesspool

Top View



-  (100x100x3) mm Square Steel Pipe
-  Truss Beam
-  (80x40x2) mm Square Steel Pipe (Purlin)



Truss Beam Details