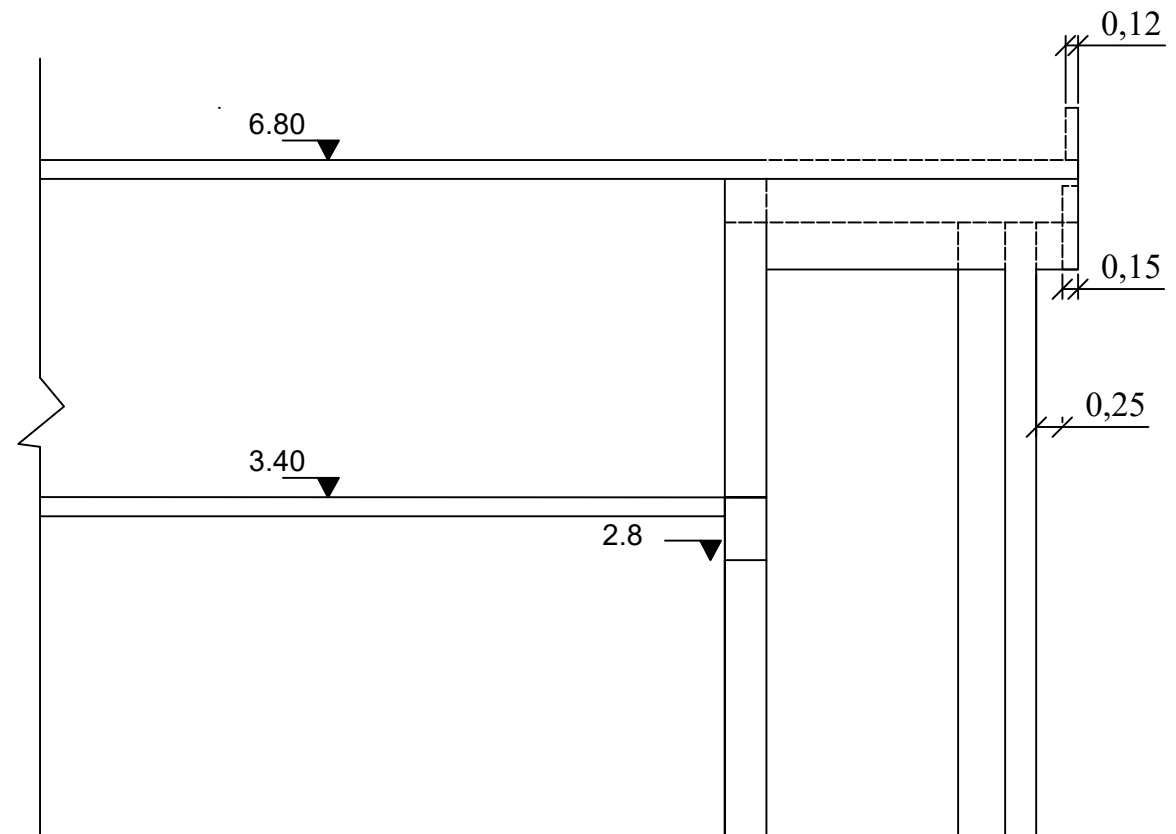
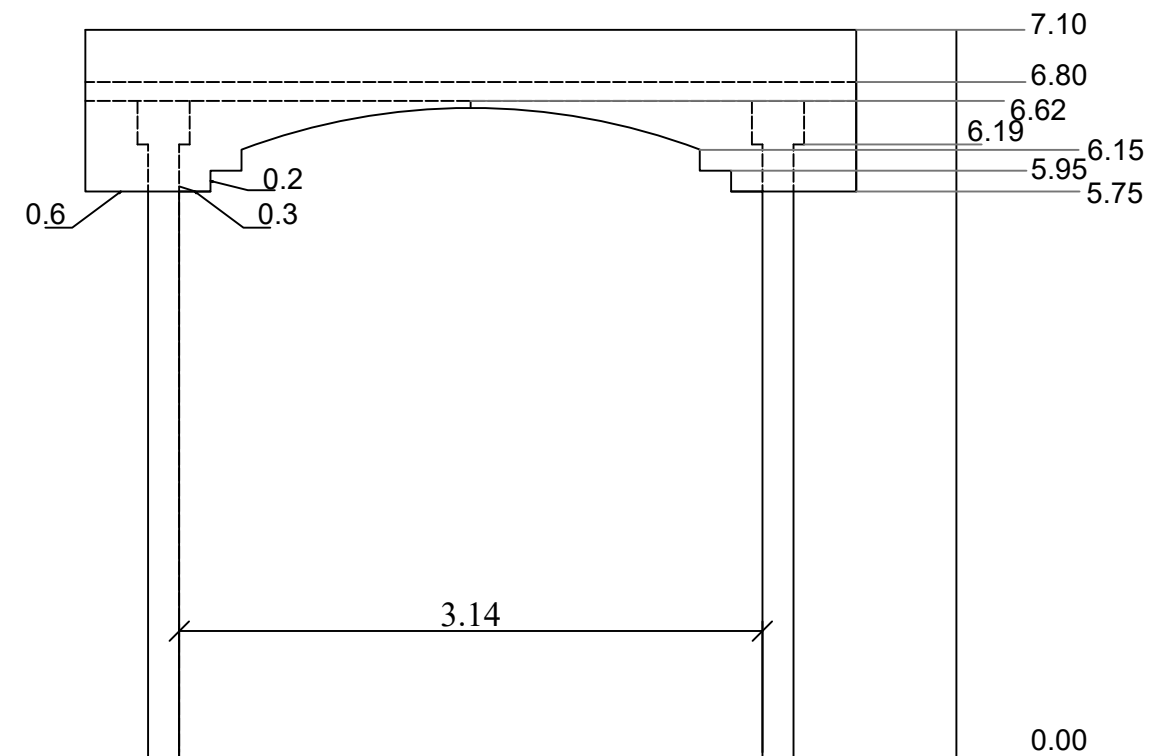


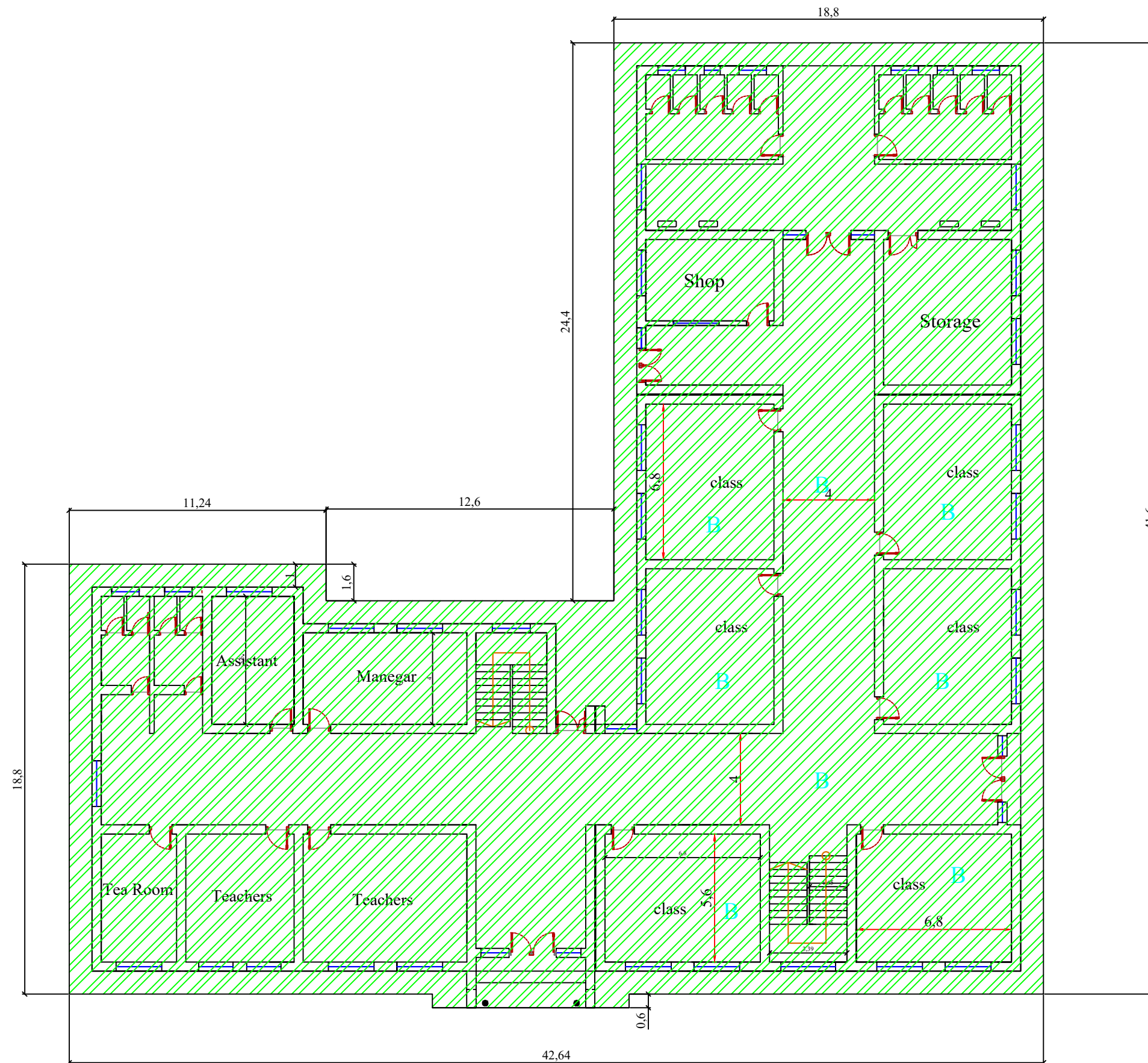
Section A-A

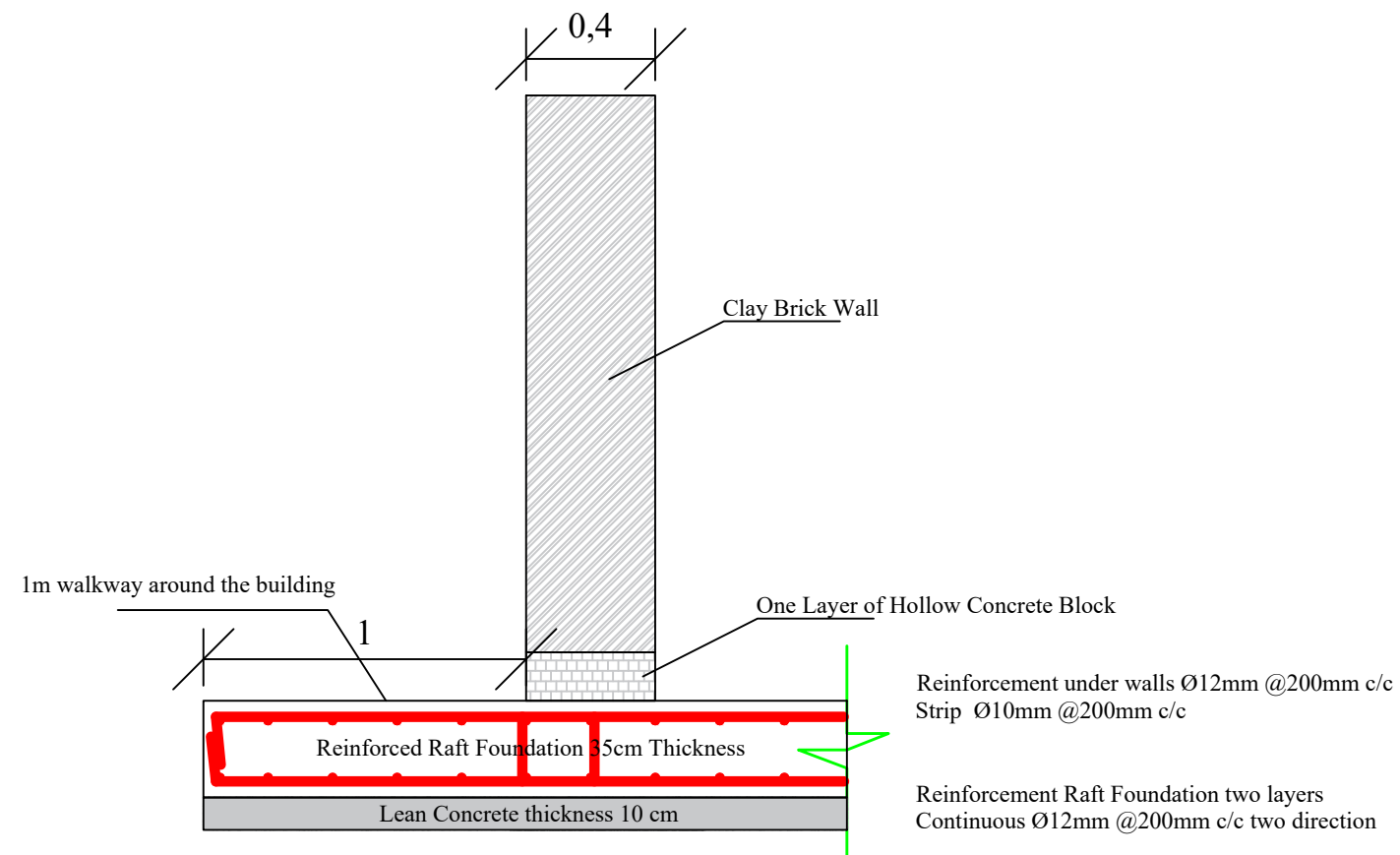


Side View

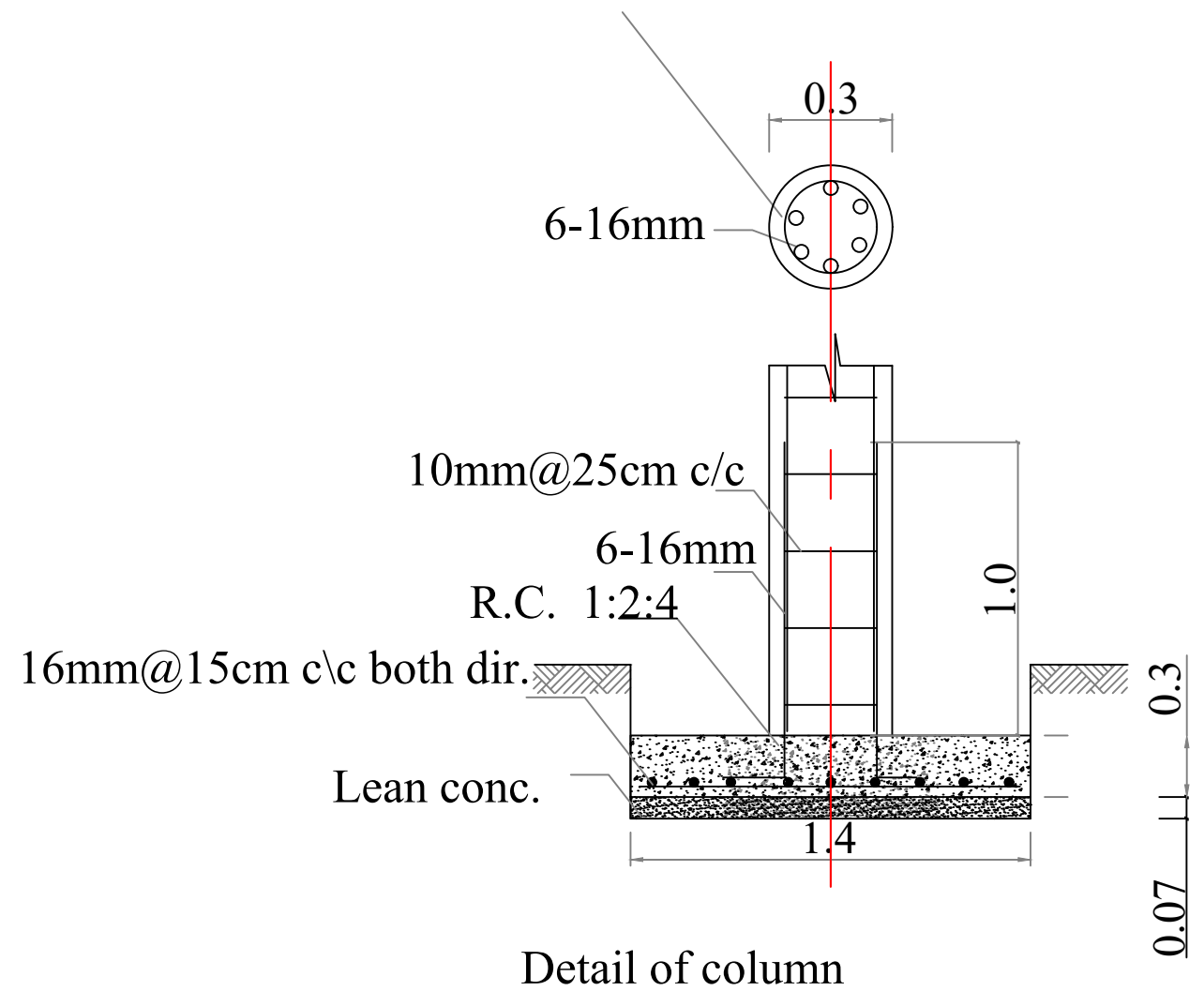


Front View

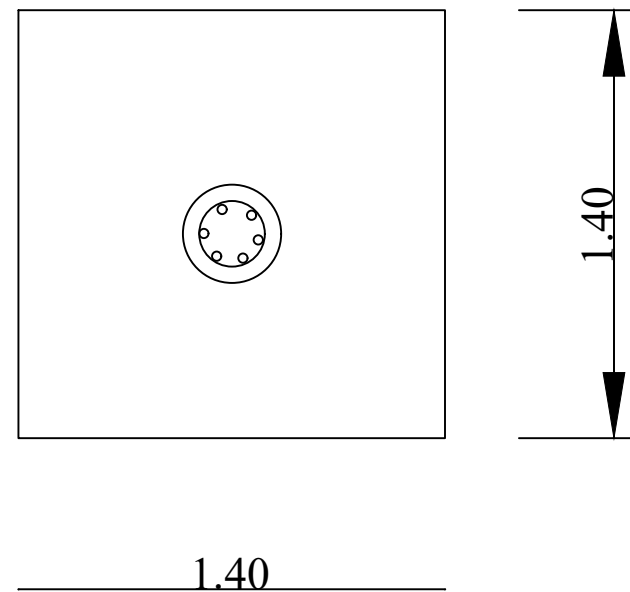


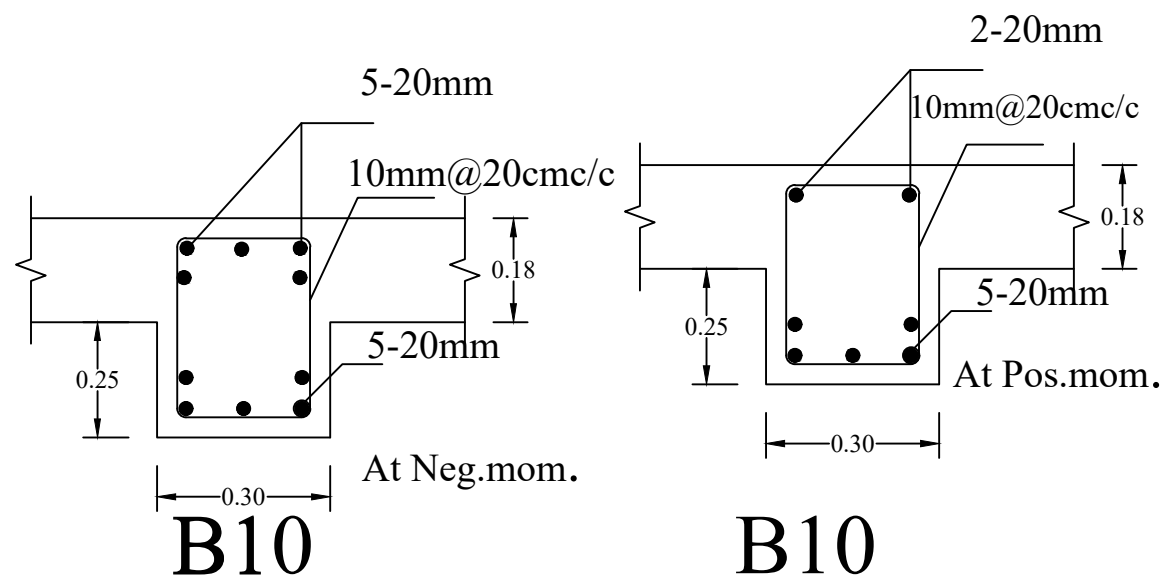


10mm@25cm c/c and at development length @ 15cm c/c



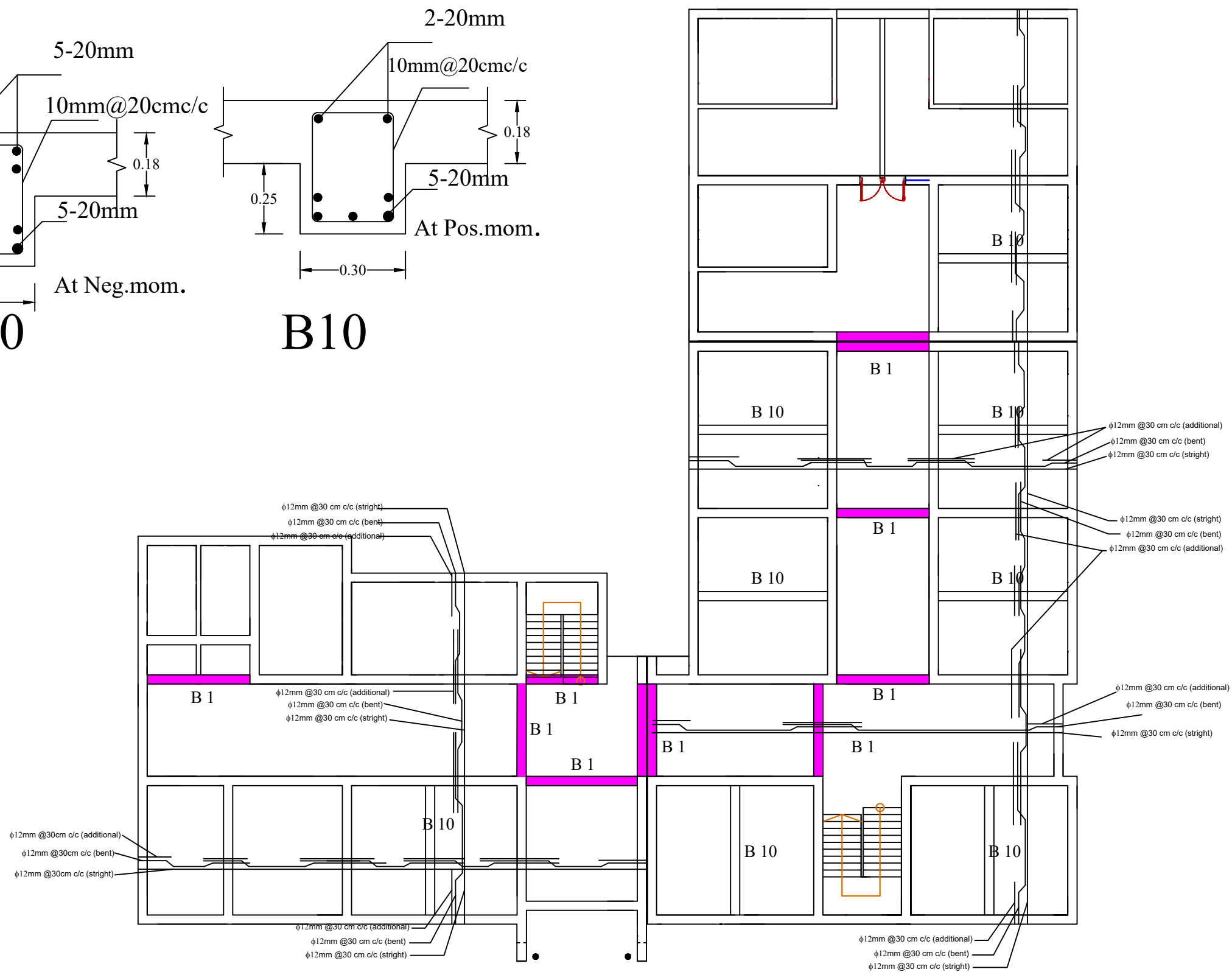
F1

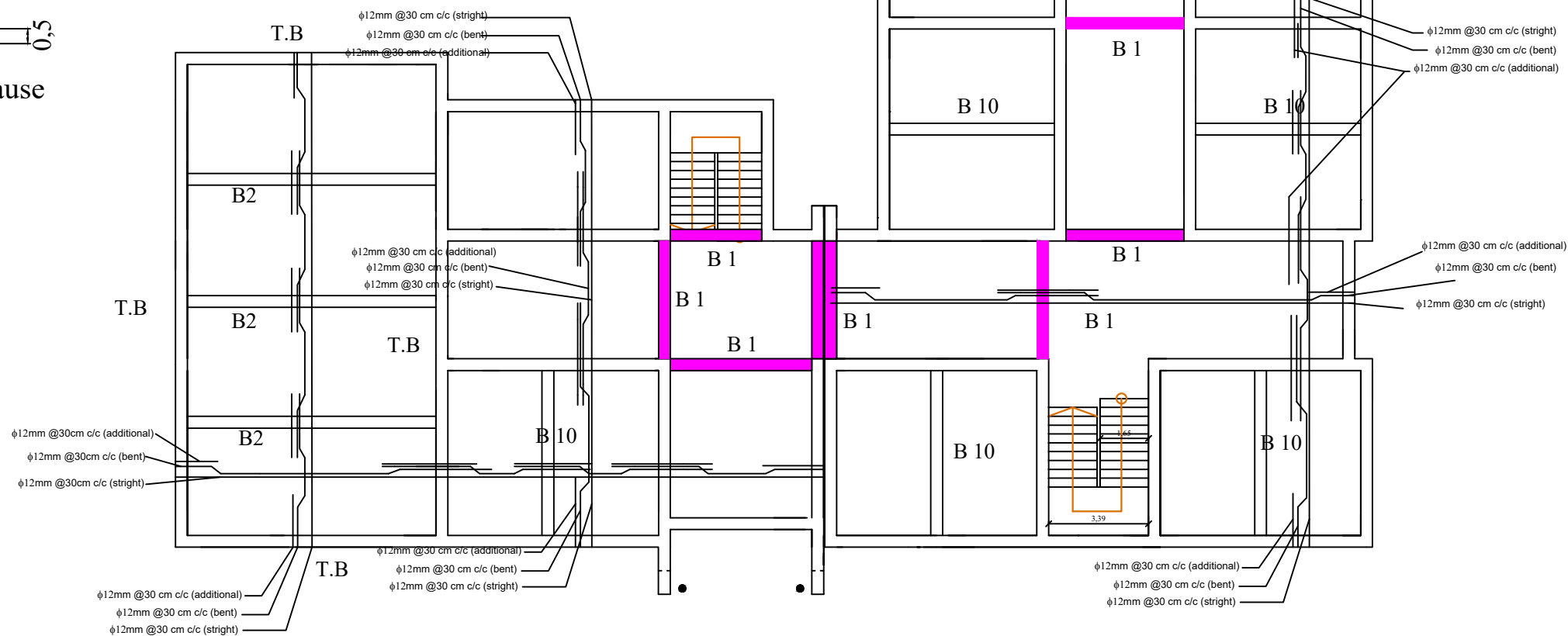
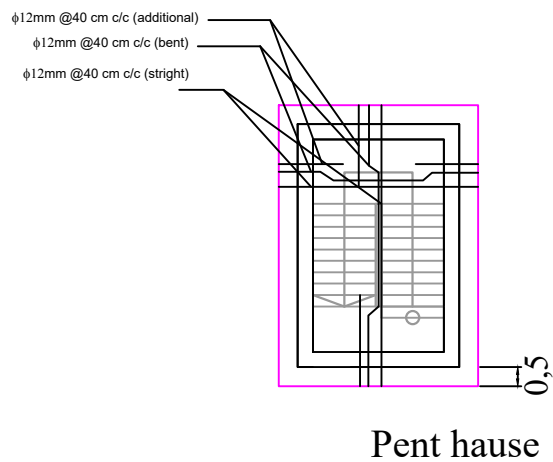
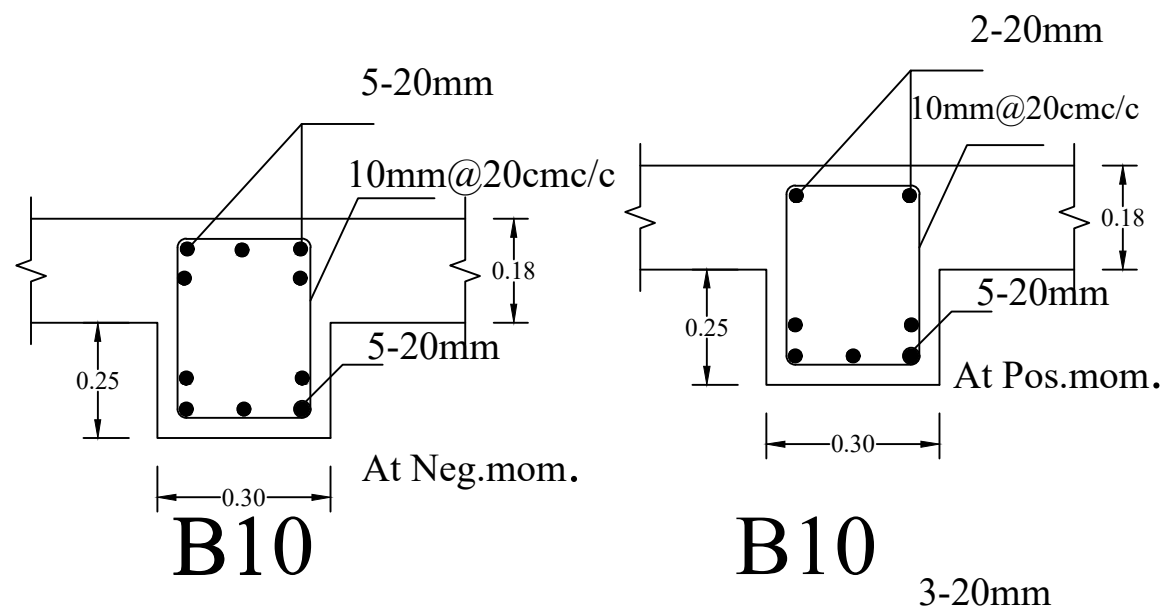


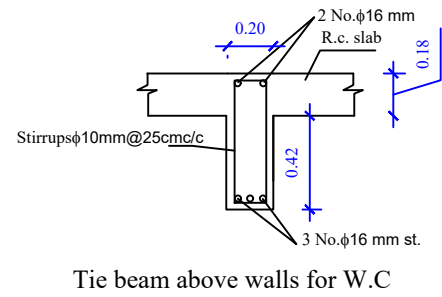


B10

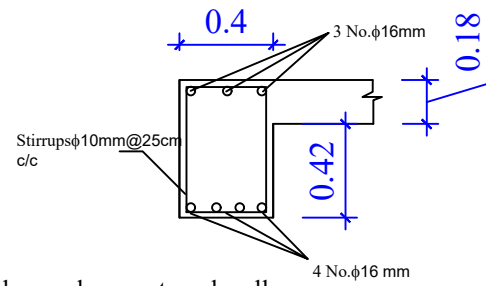
B10



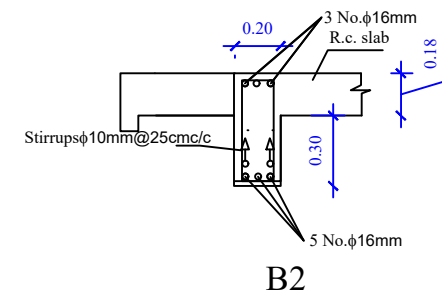




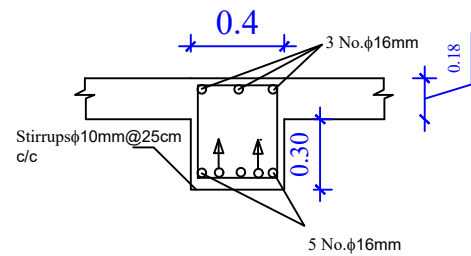
Tie beam above walls for W.C



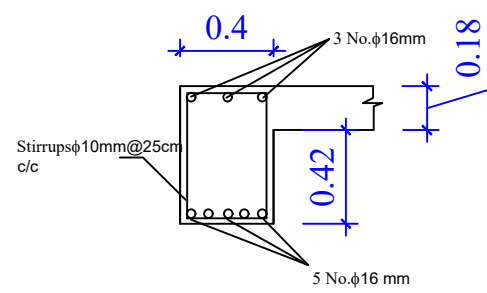
Tie beam above external walls



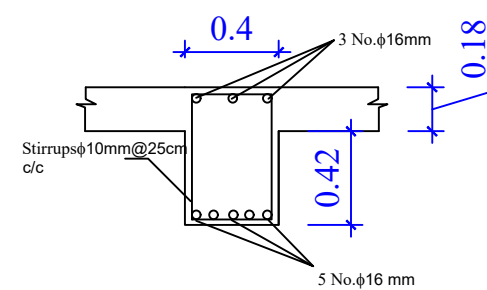
B2



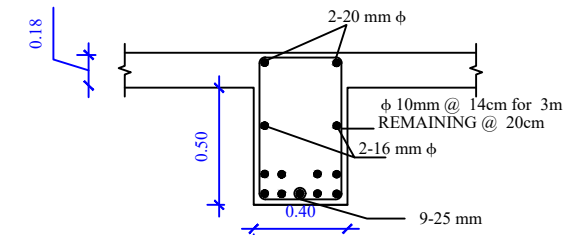
B1



Tie beam above external walls at Window

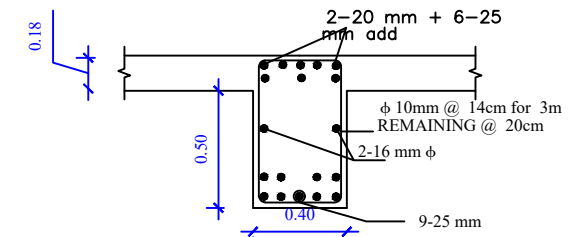


Tie beam above internal walls



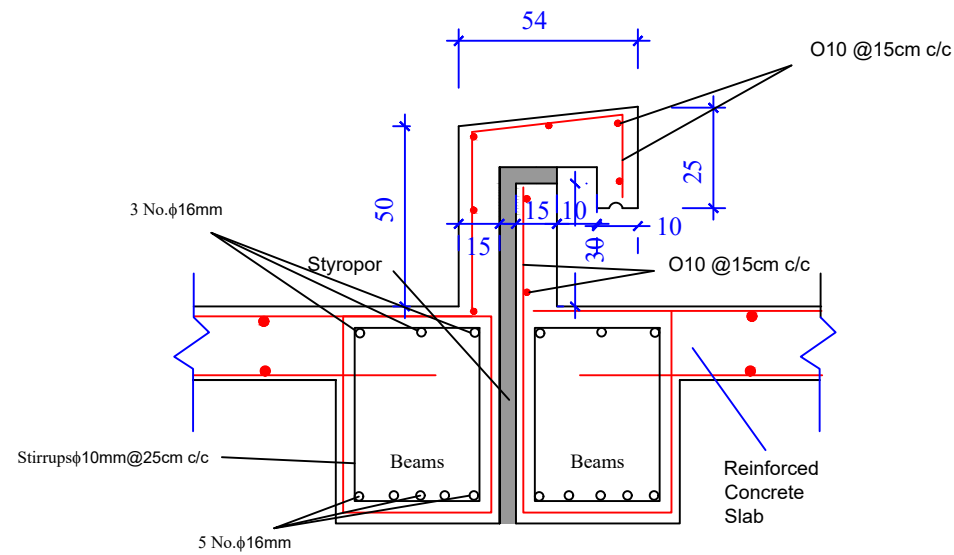
B2

SECTION 1-1

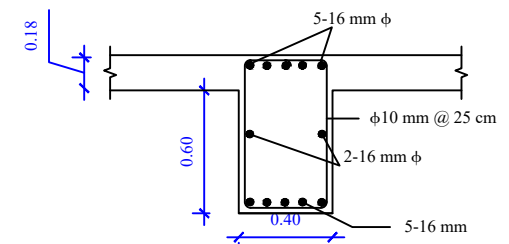


B2

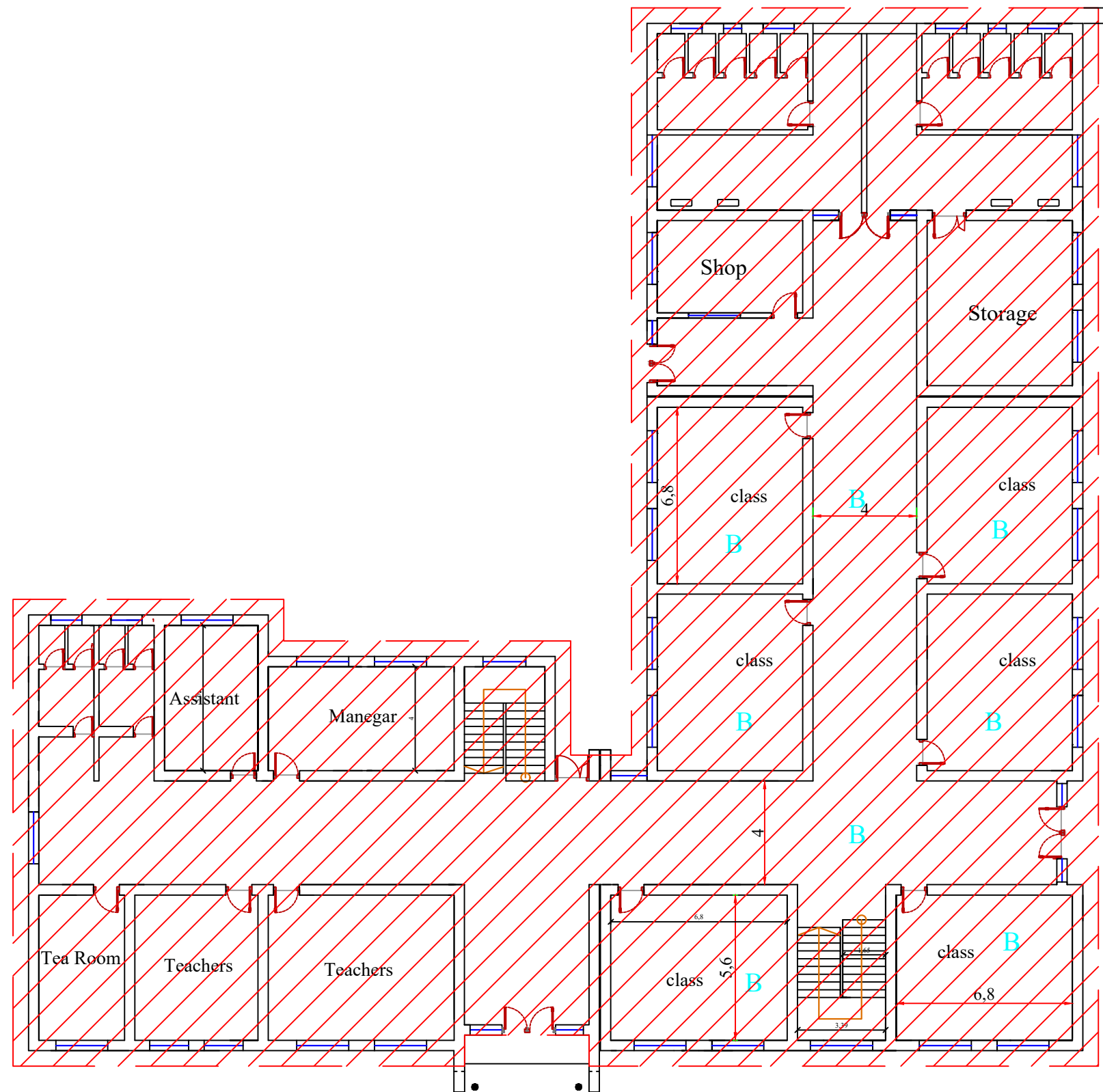
SECTION 2-2

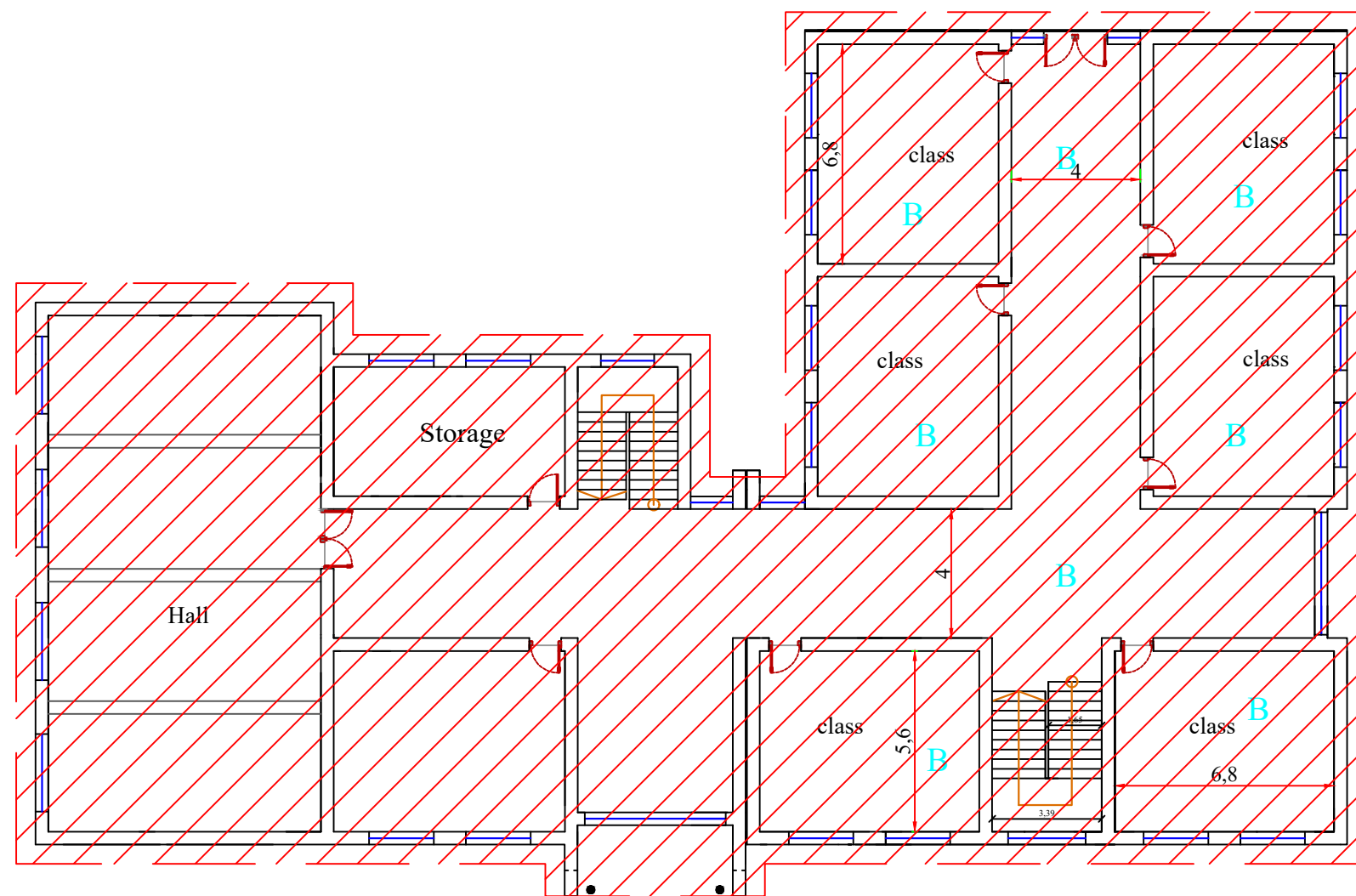


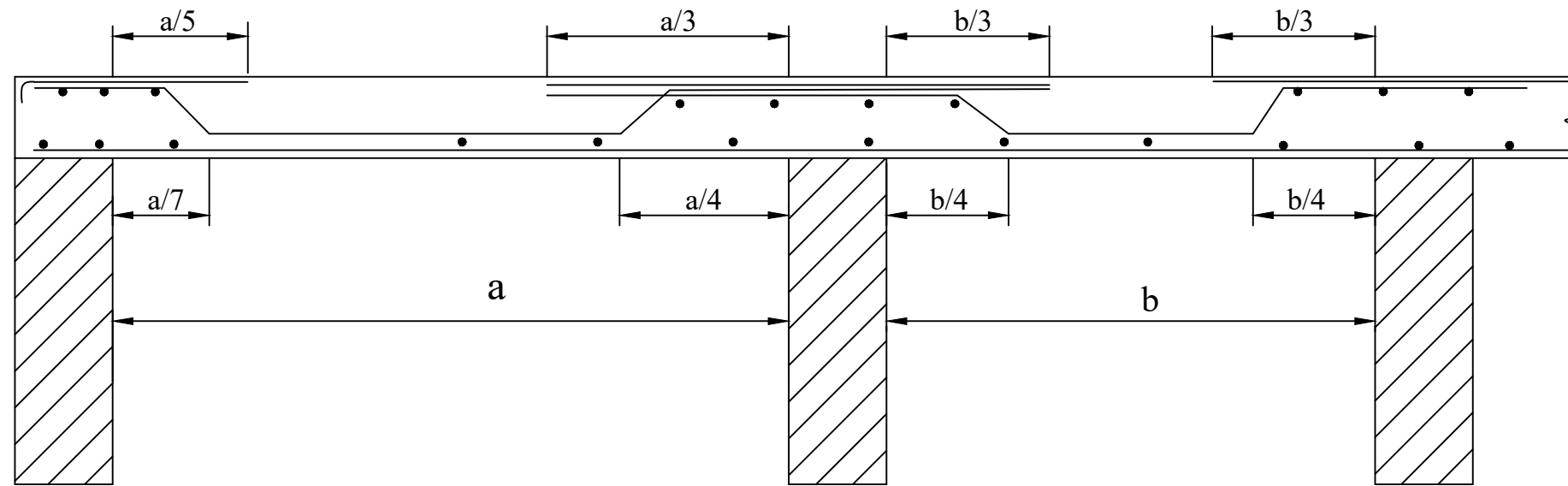
EXPANTION JOINT AT ROOF



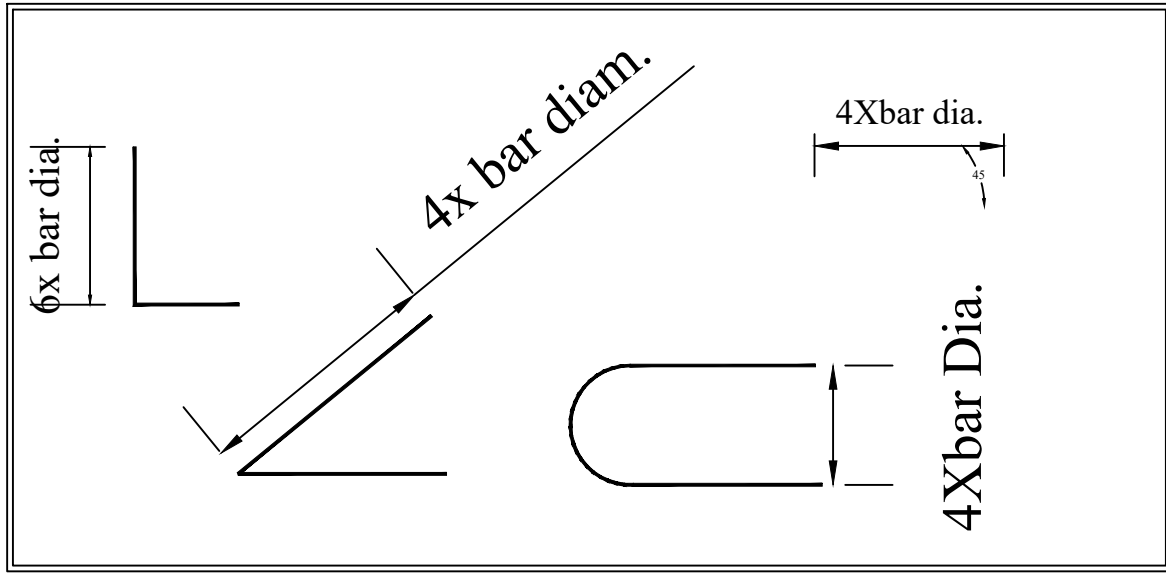
T.B



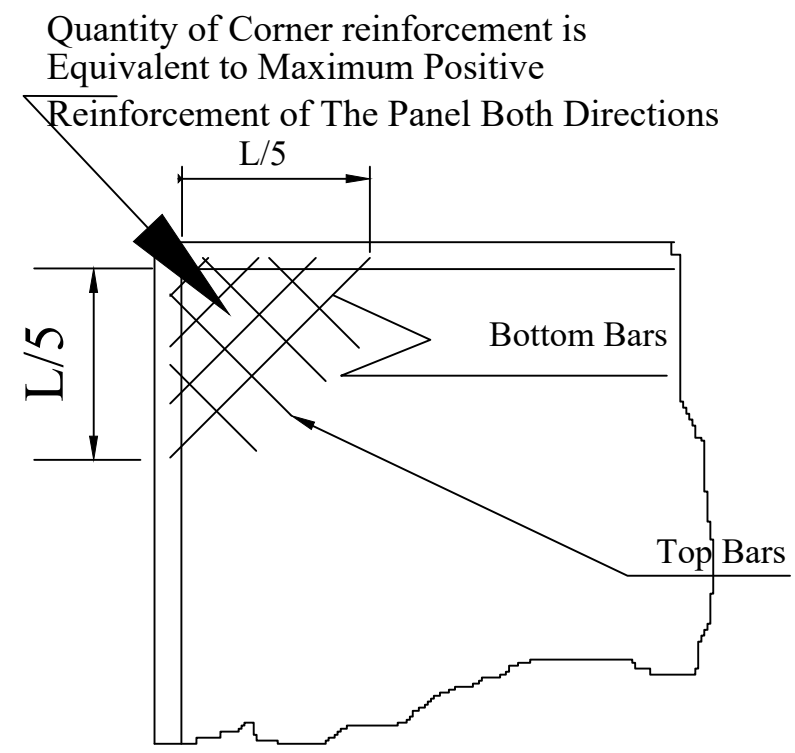




Typical Section

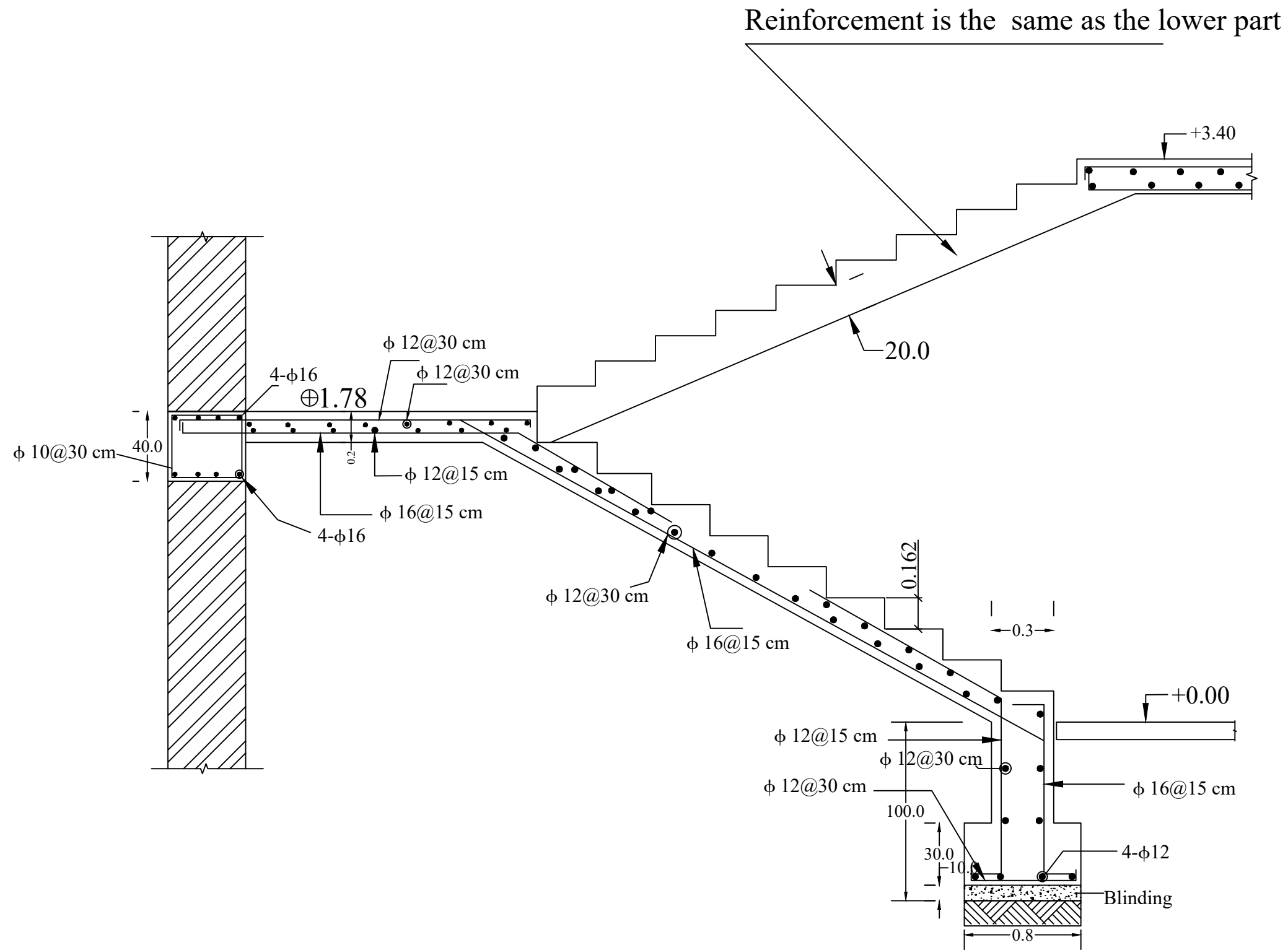


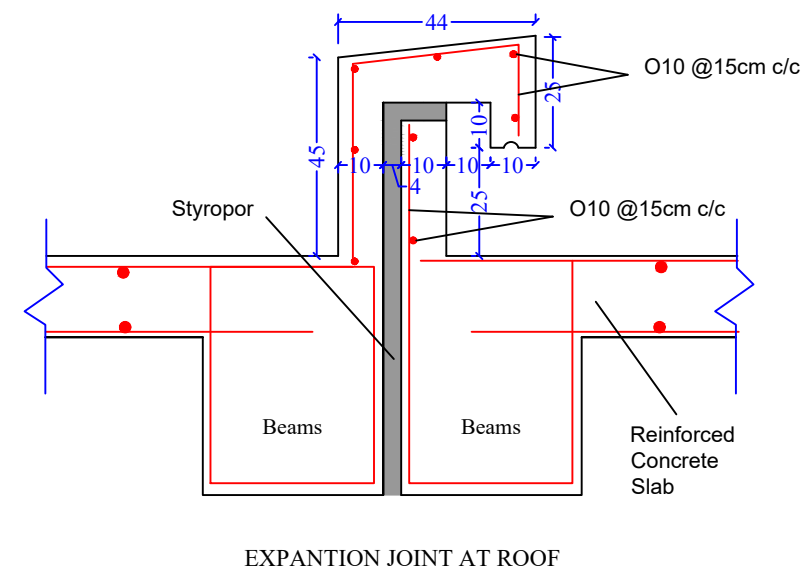
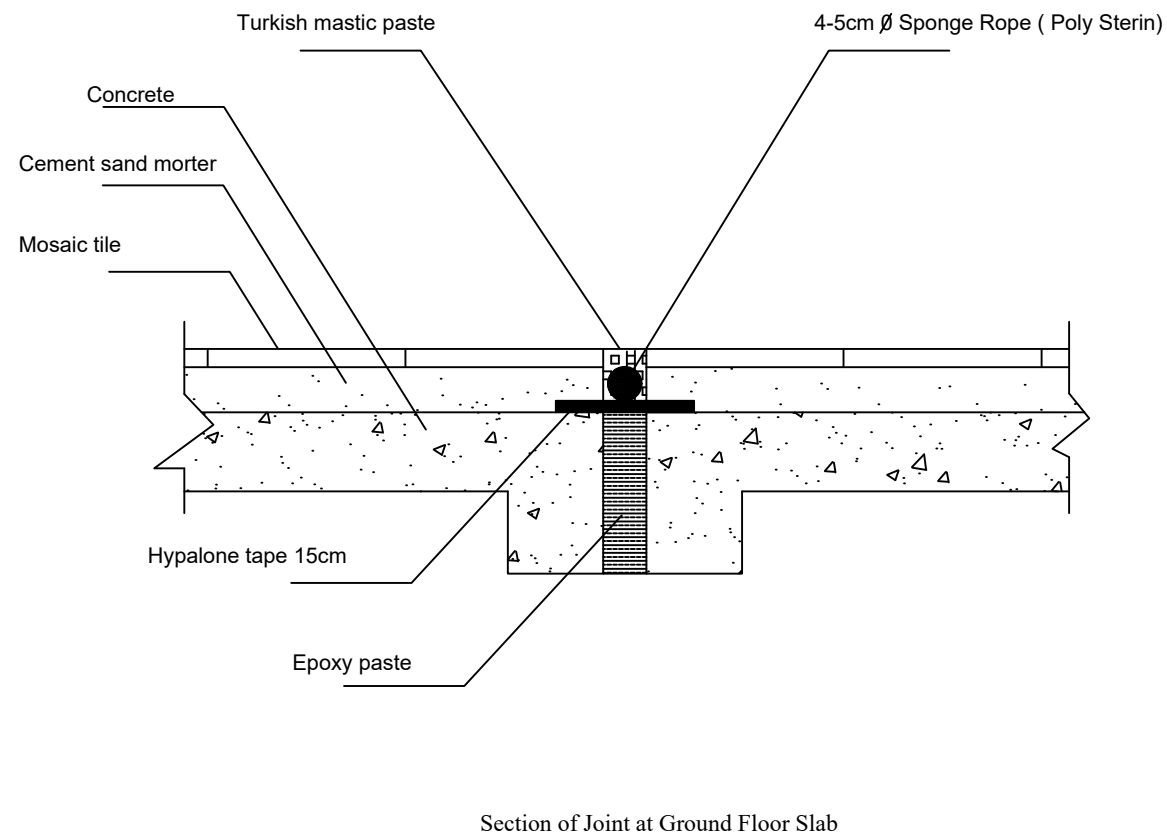
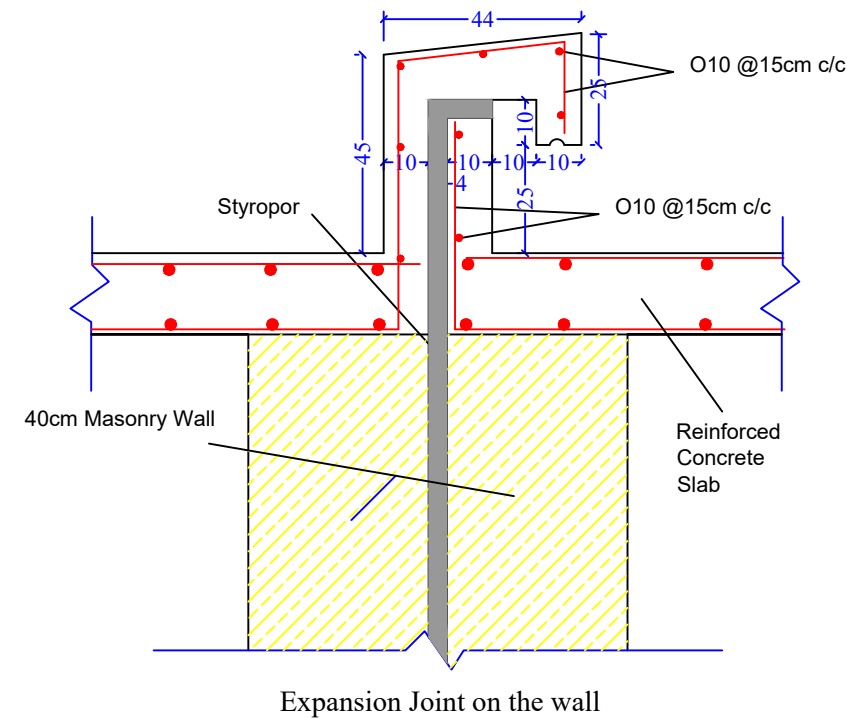
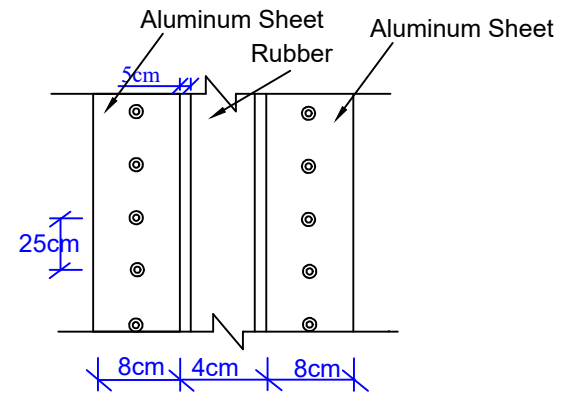
Detail of Hook of Bars



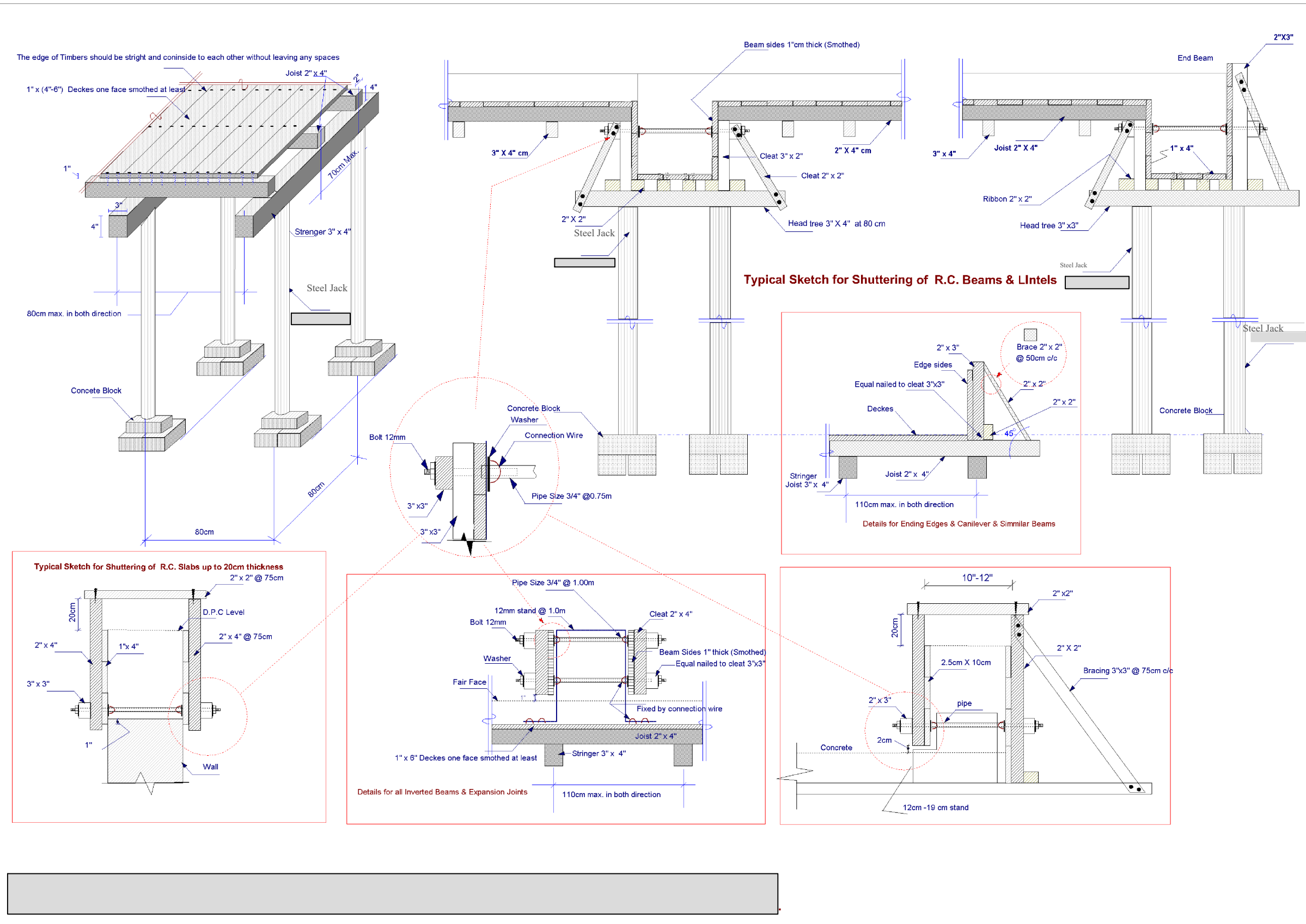
Quantity of Corner reinforcement is Equivalent to Maximum Positive Reinforcement of The Panel Both Directions

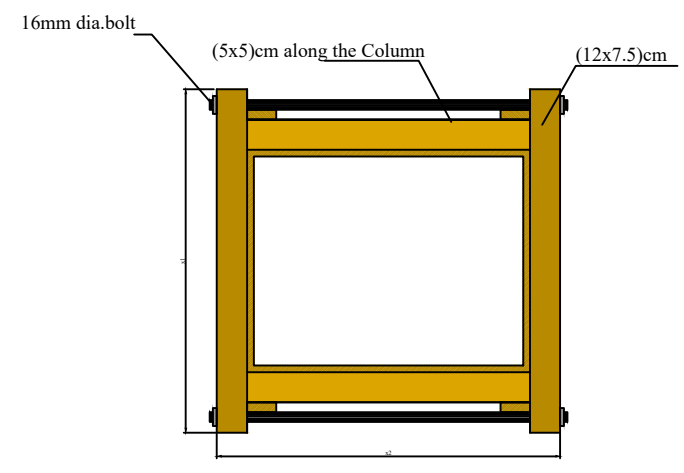
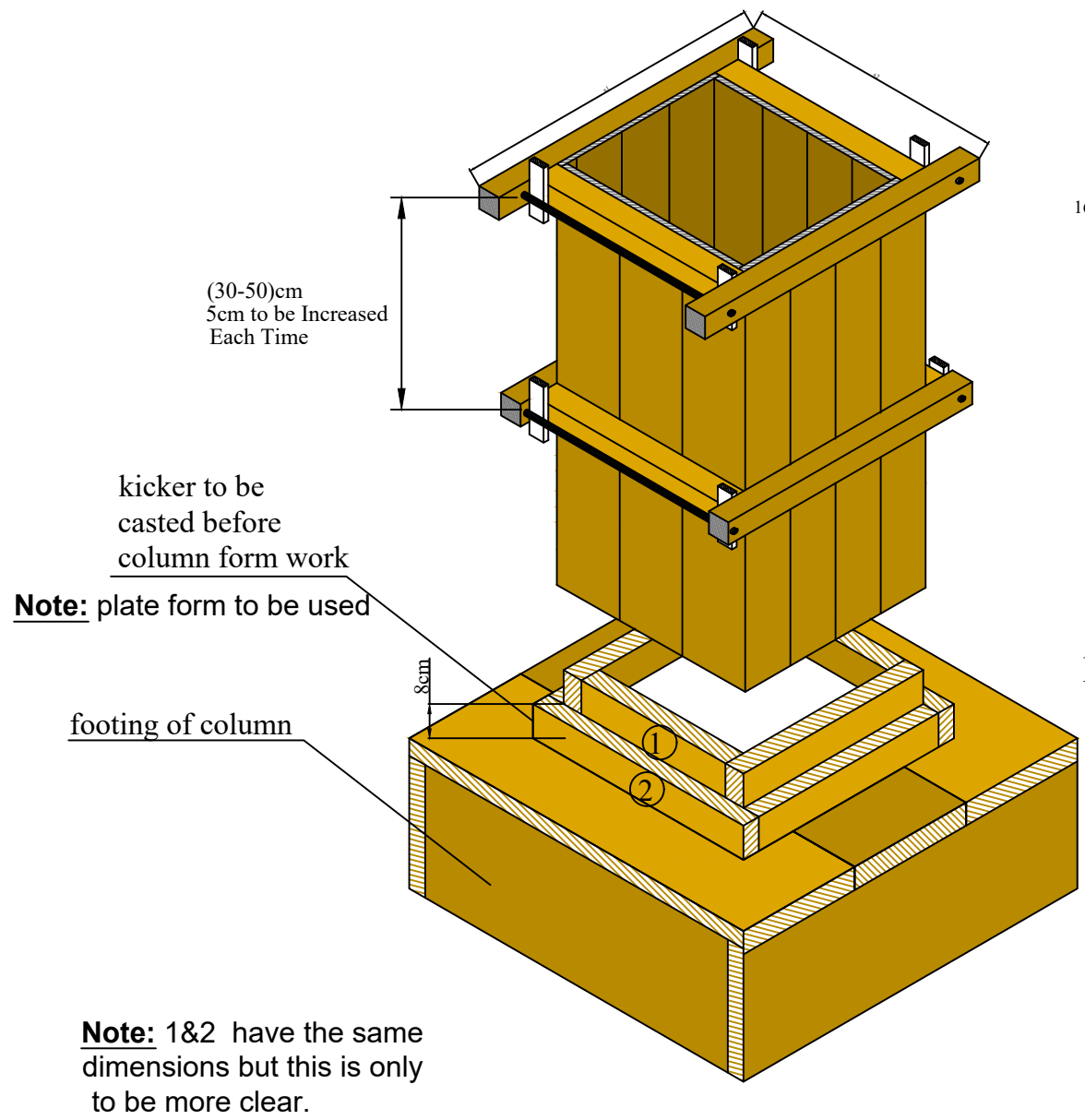
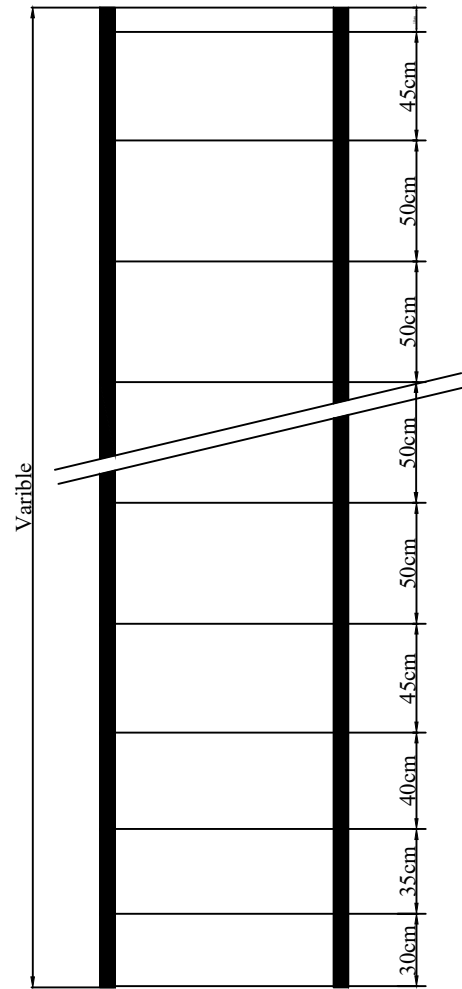
Special Reinforcement at Exterior corners for Slabs





Detail of Covering External Face of Expansion Joints





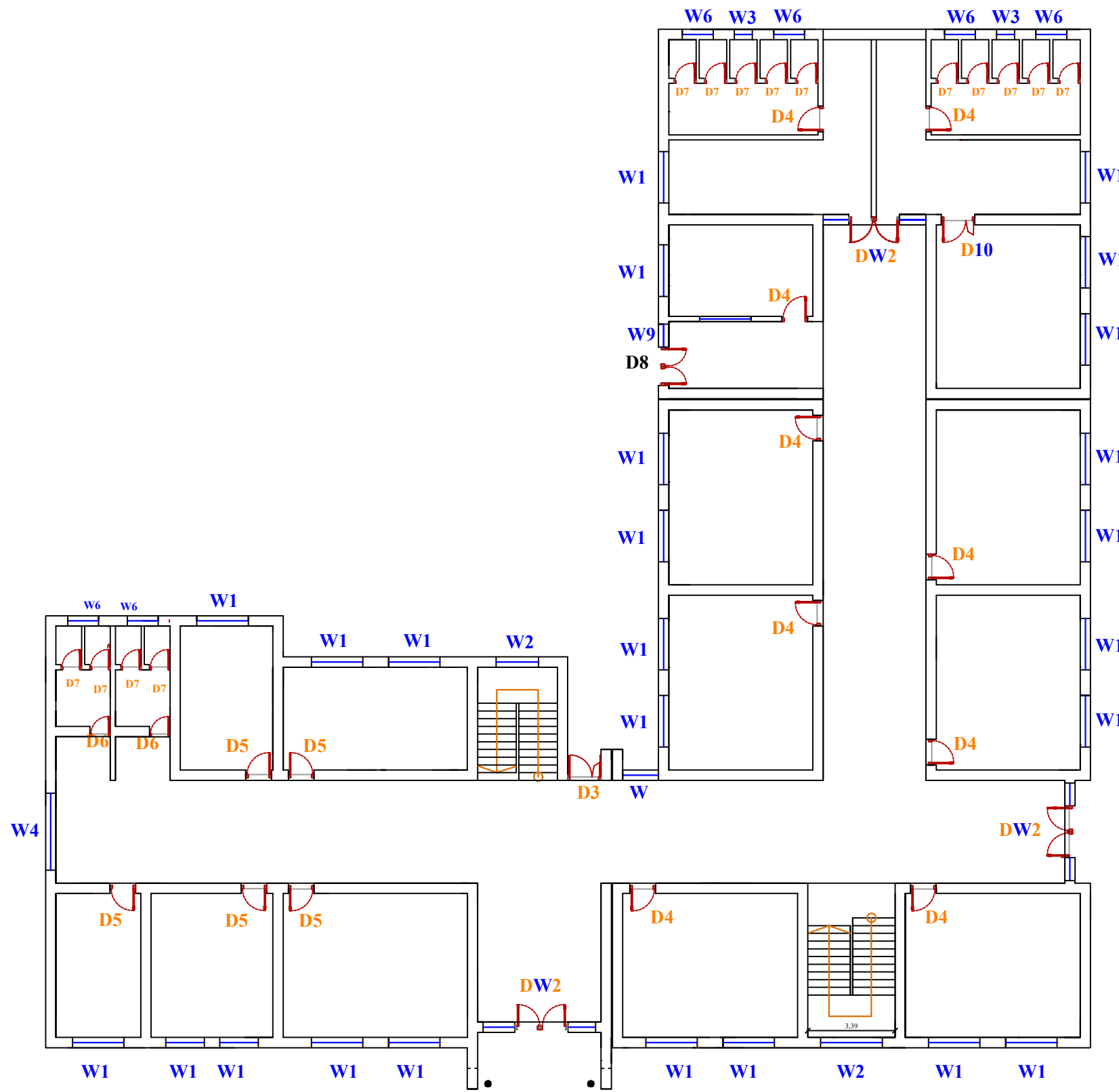
Fakha for Shont Columns

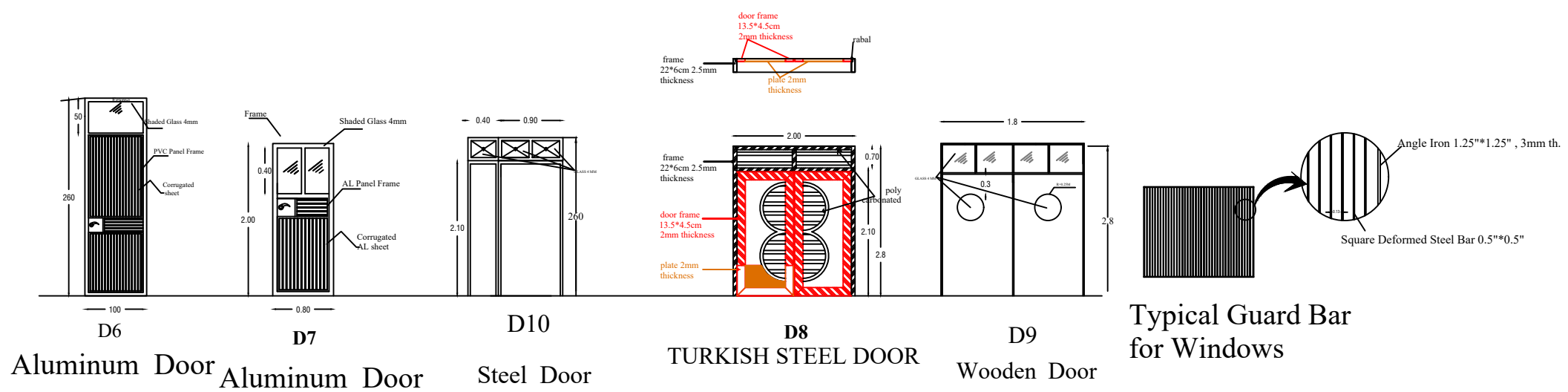
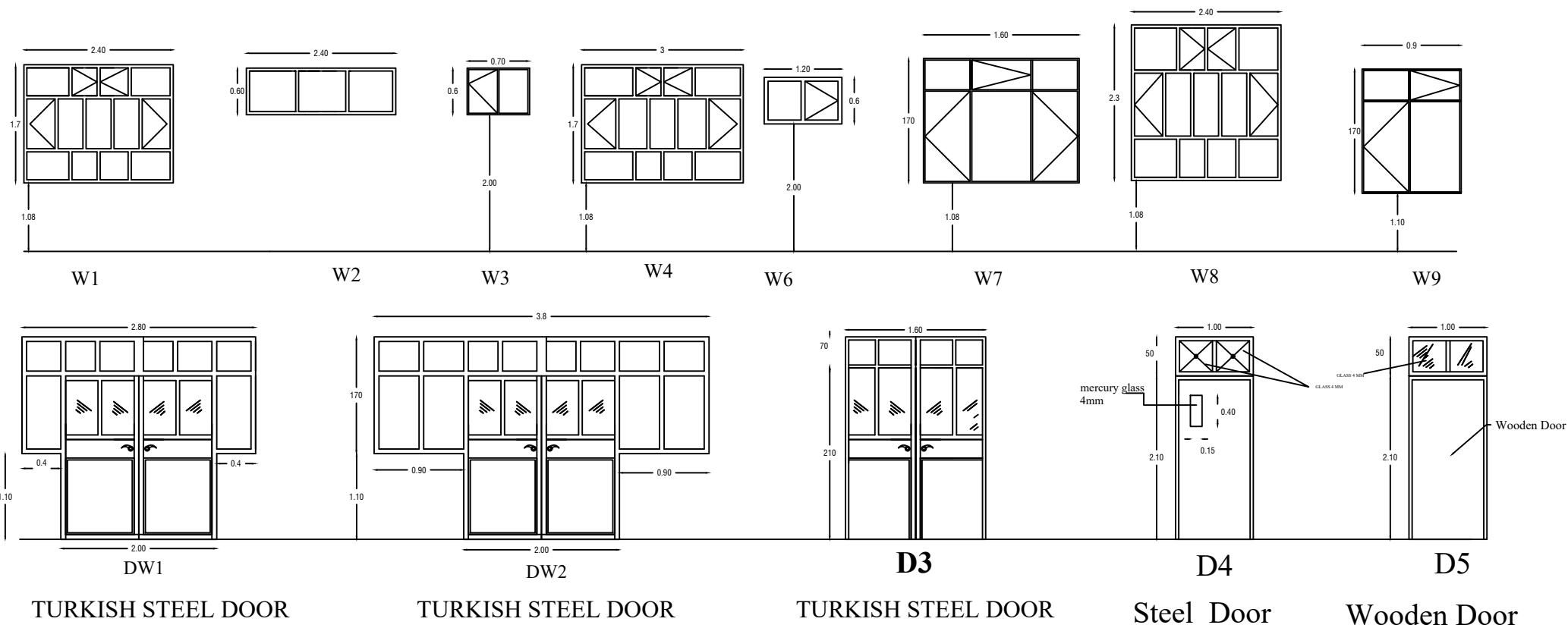
column Shuttering

** all spice (if) any Between Timber Parts Should be Filled With Putty and timber/ Wall Parts to be filled With Mortar. According to S.E. s' Instructions.

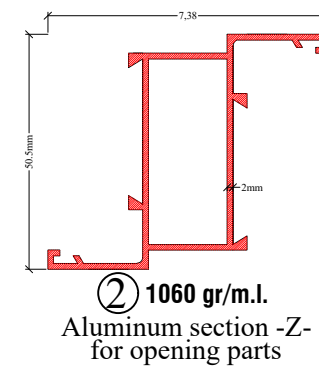
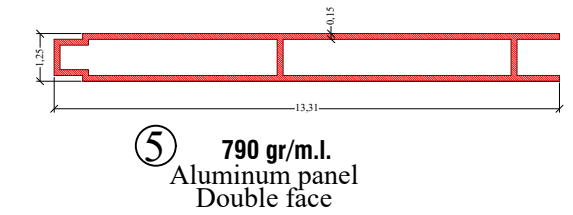
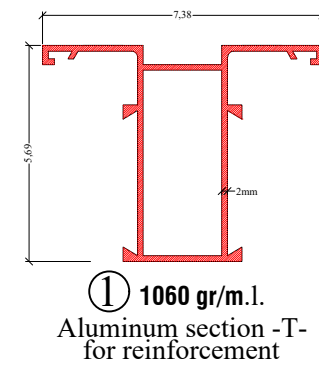
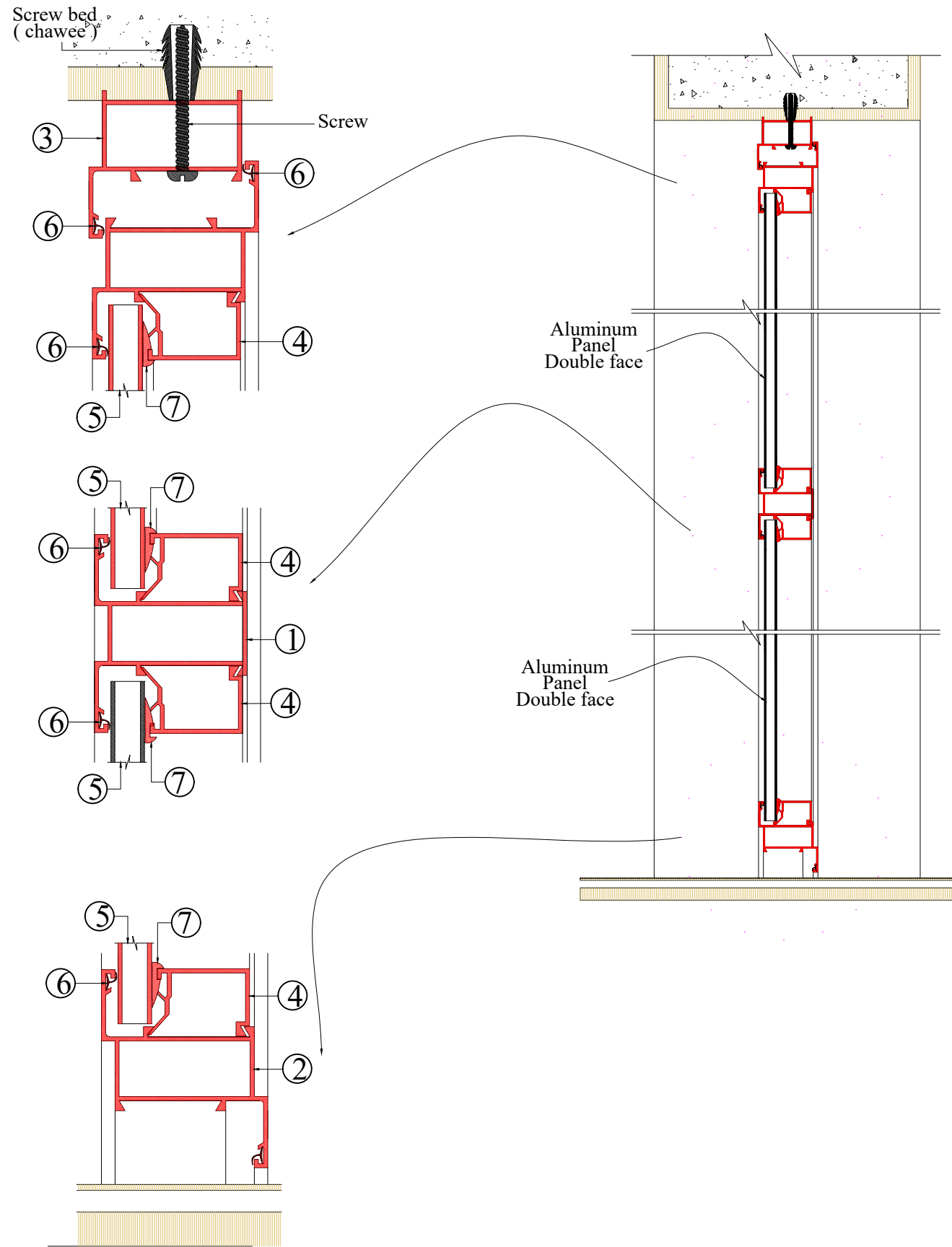
*Note : All Woods should be Candian or American type .

Note: 1&2 have the same dimensions but this is only to be more clear.

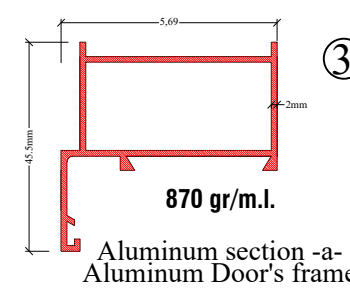




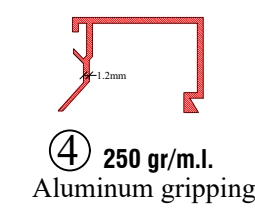
File Name:

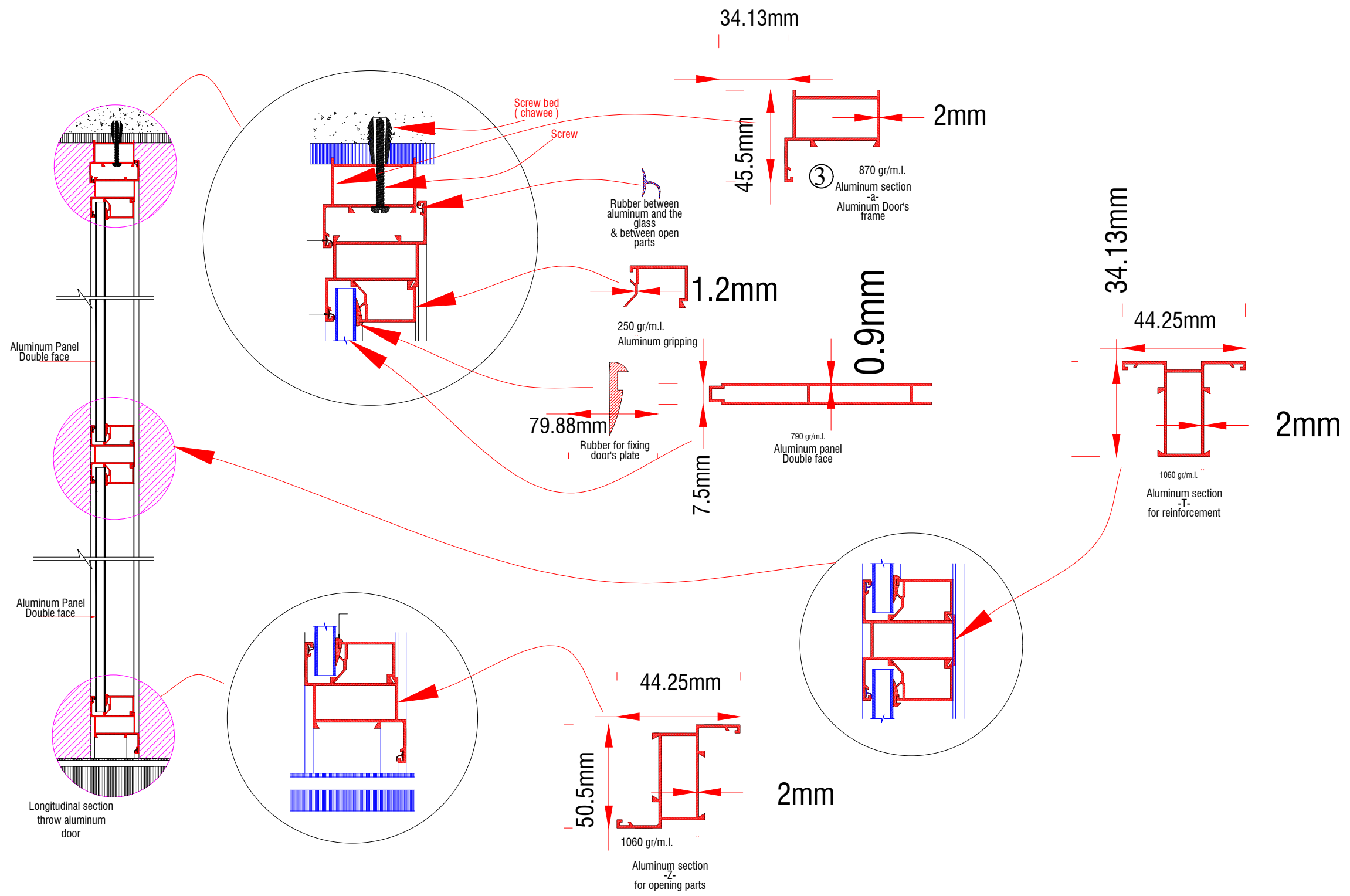


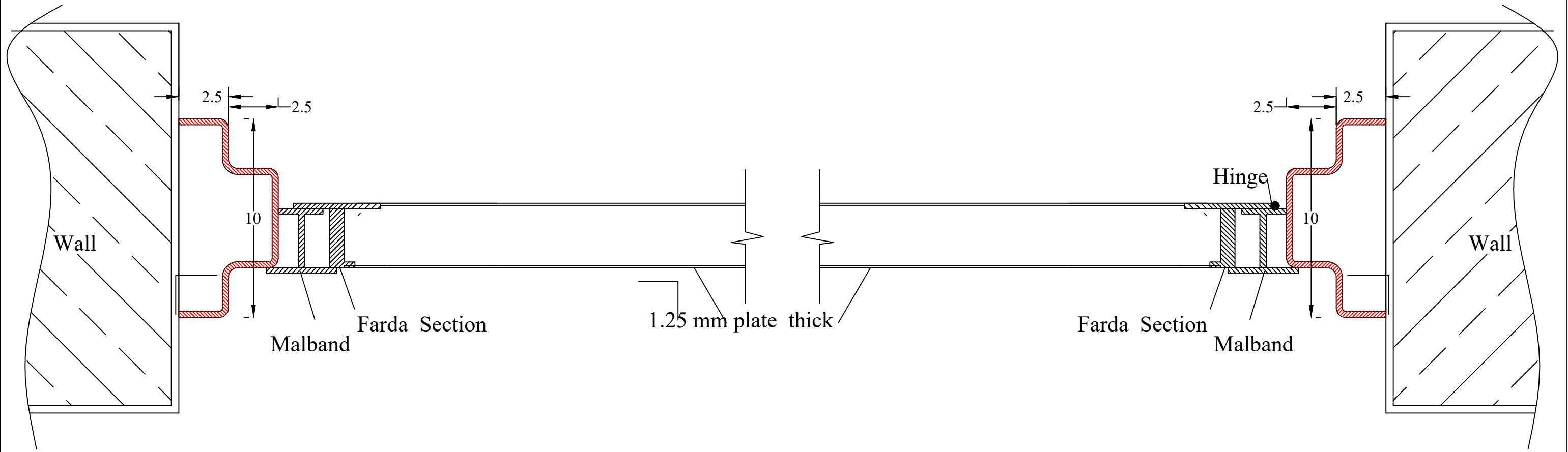
⑥ Rubber between
aluminum and the glass
& between open parts



⑦ Rubber for fixing
door's plate

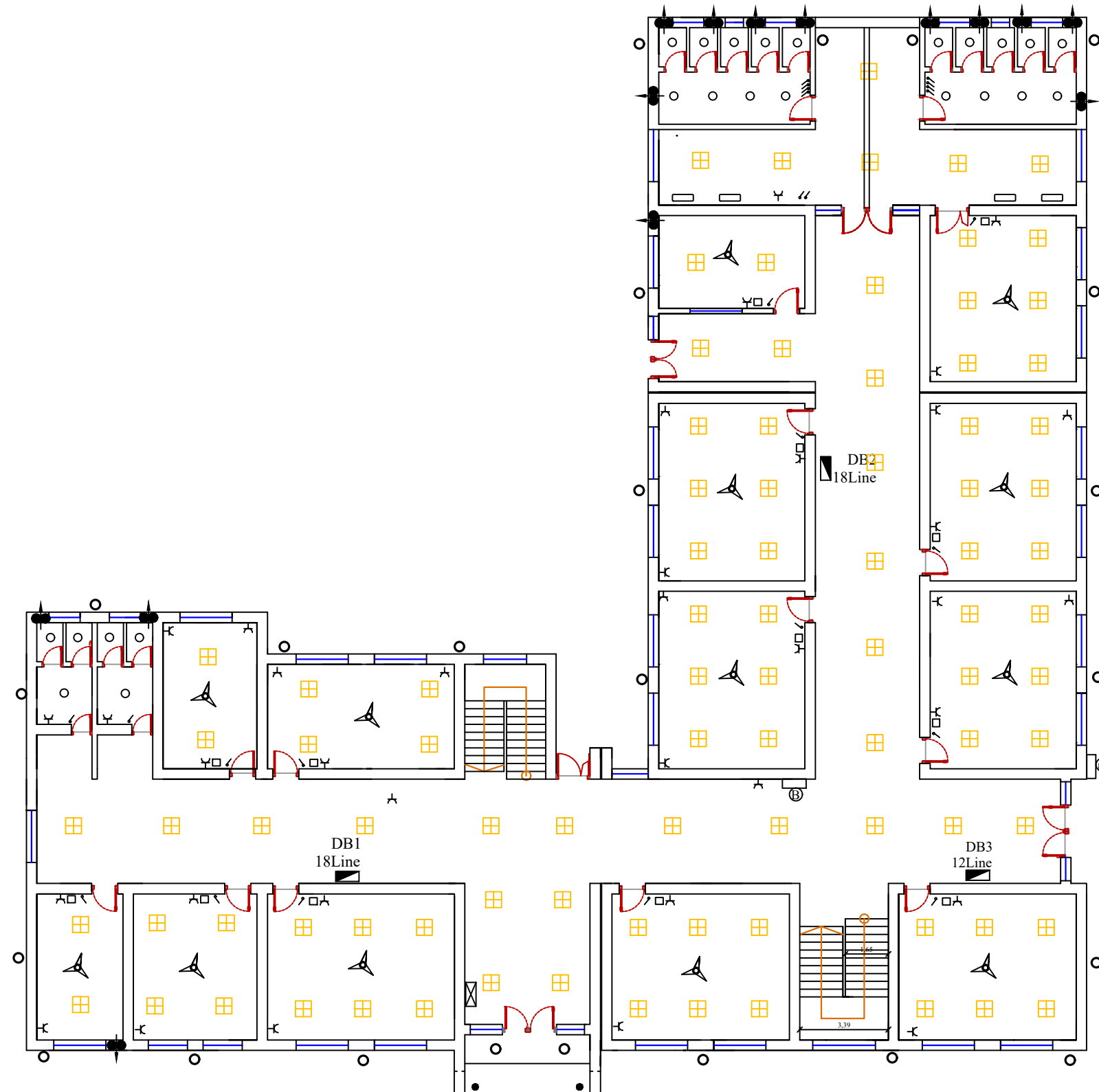




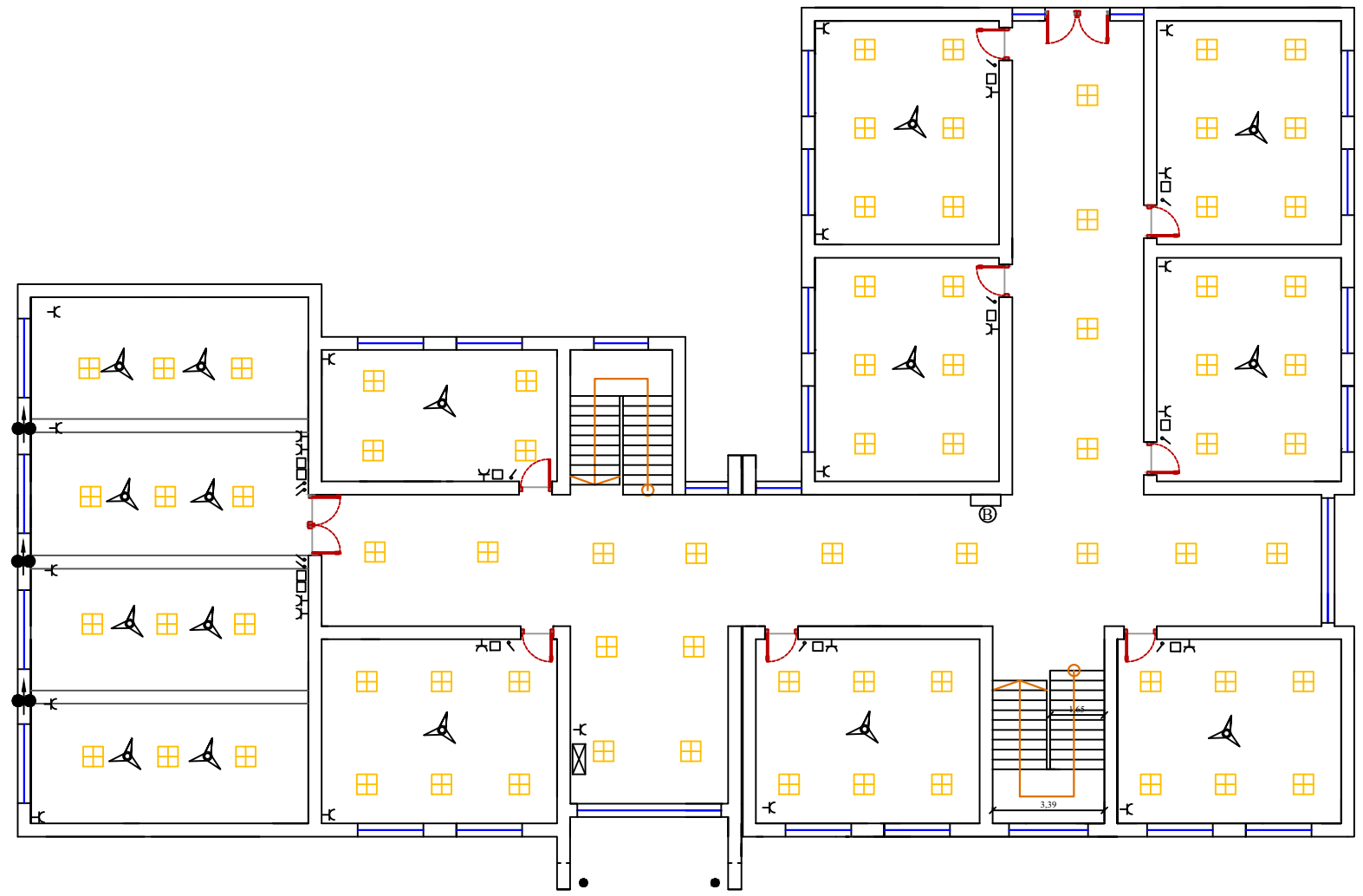


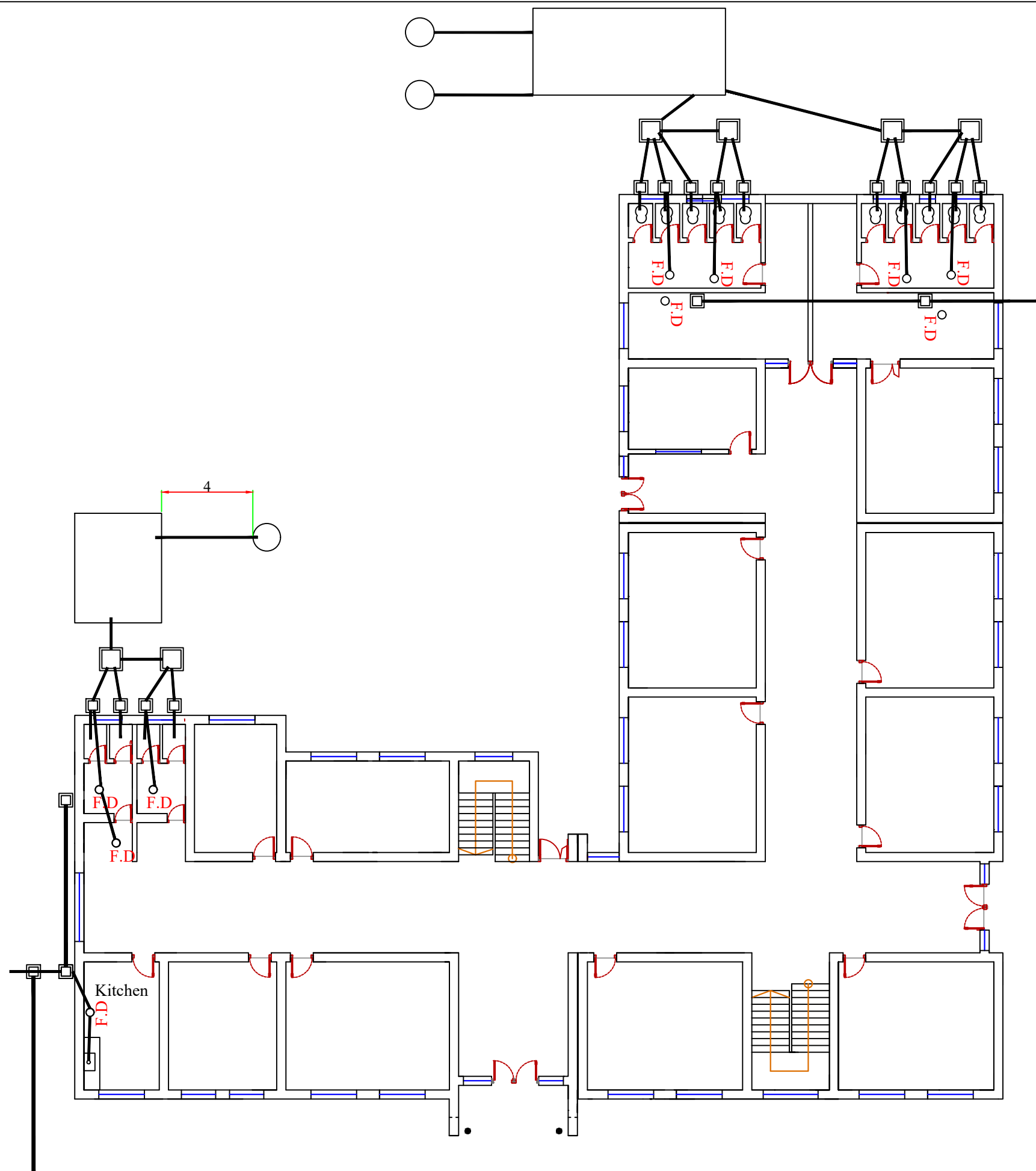
- Spotlight ○
- switch plug 13 Amp ,at
hight 130 cm above
FFL. ⚡
- Main Board ⊠
- Circuit Breaker at hight
150 cm above FFL. ◼
- Celling Lamp (Big Size) ○

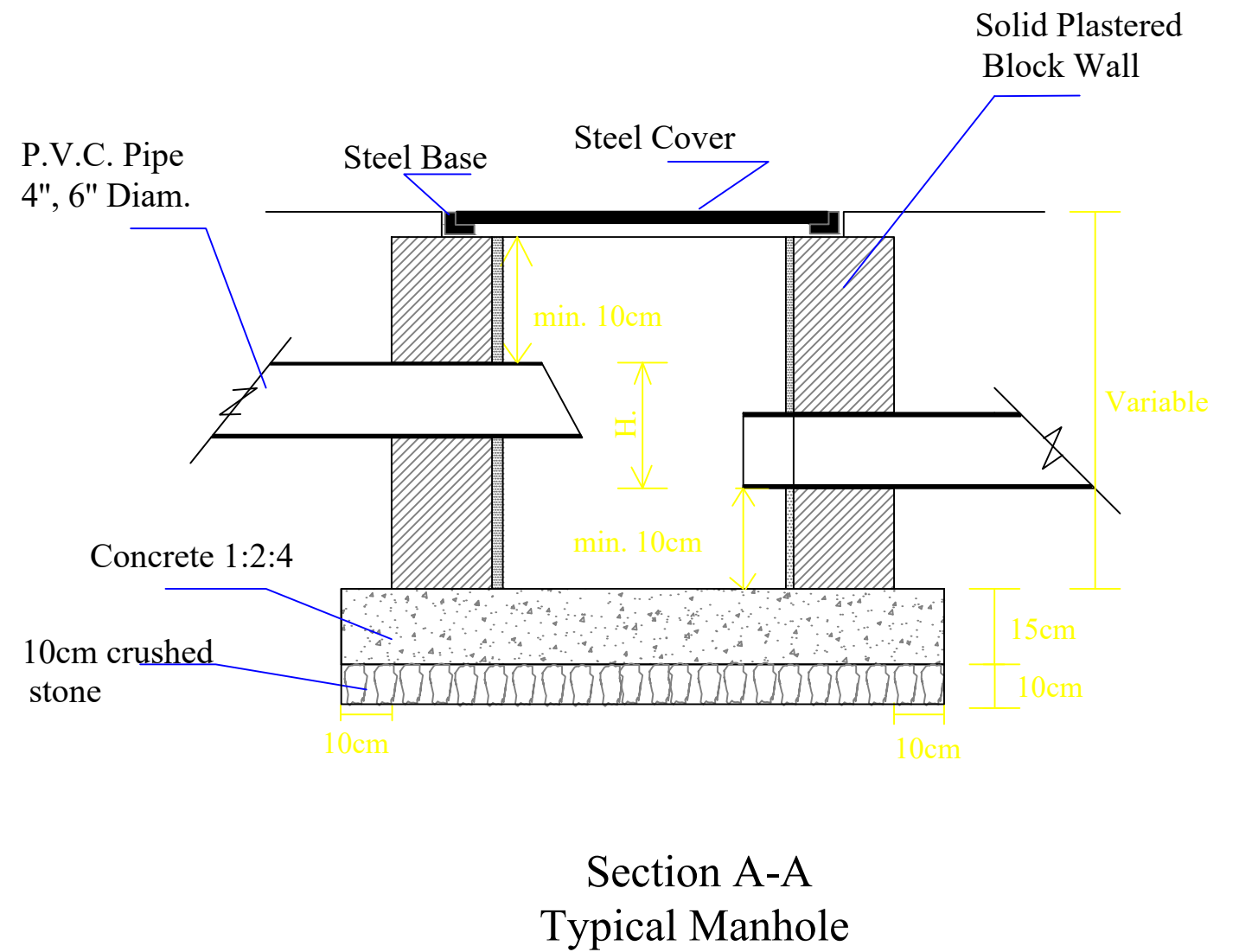
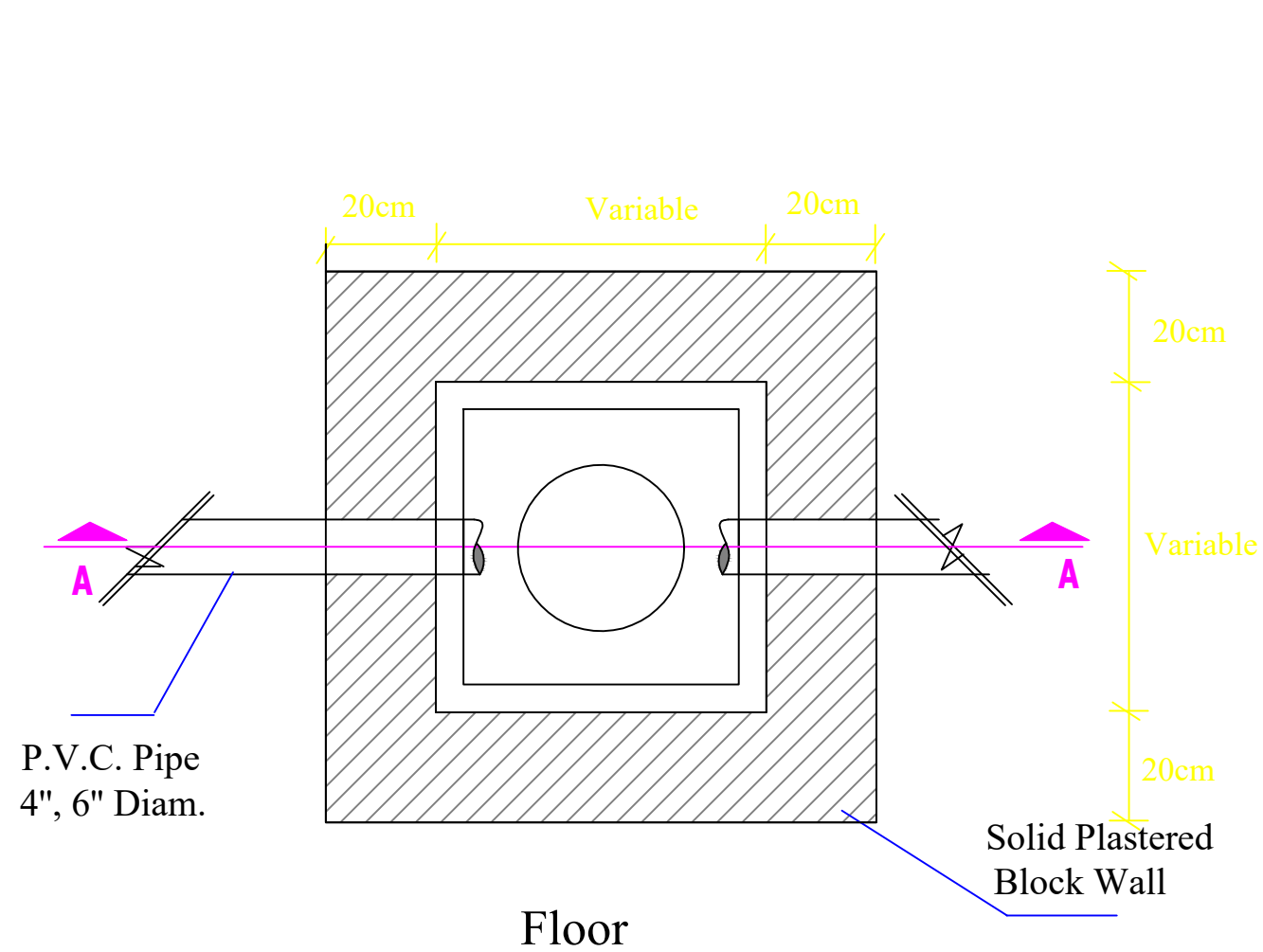
- Exhaust Fan
regulator at hight 130
cm above FFL. ⚙
- Electrical Fan ⚙
- Switch on / off ,at hight
130 cm above FFL. ⚡
- Lamp Fluorescent 2x40
Watt ≡
- Lamp Fluorescent 1x40
Watt ≡
- Electrical Bell Ⓜ
- Electrical Push Switch ⊙
- LED 60x60 72Watt ☐

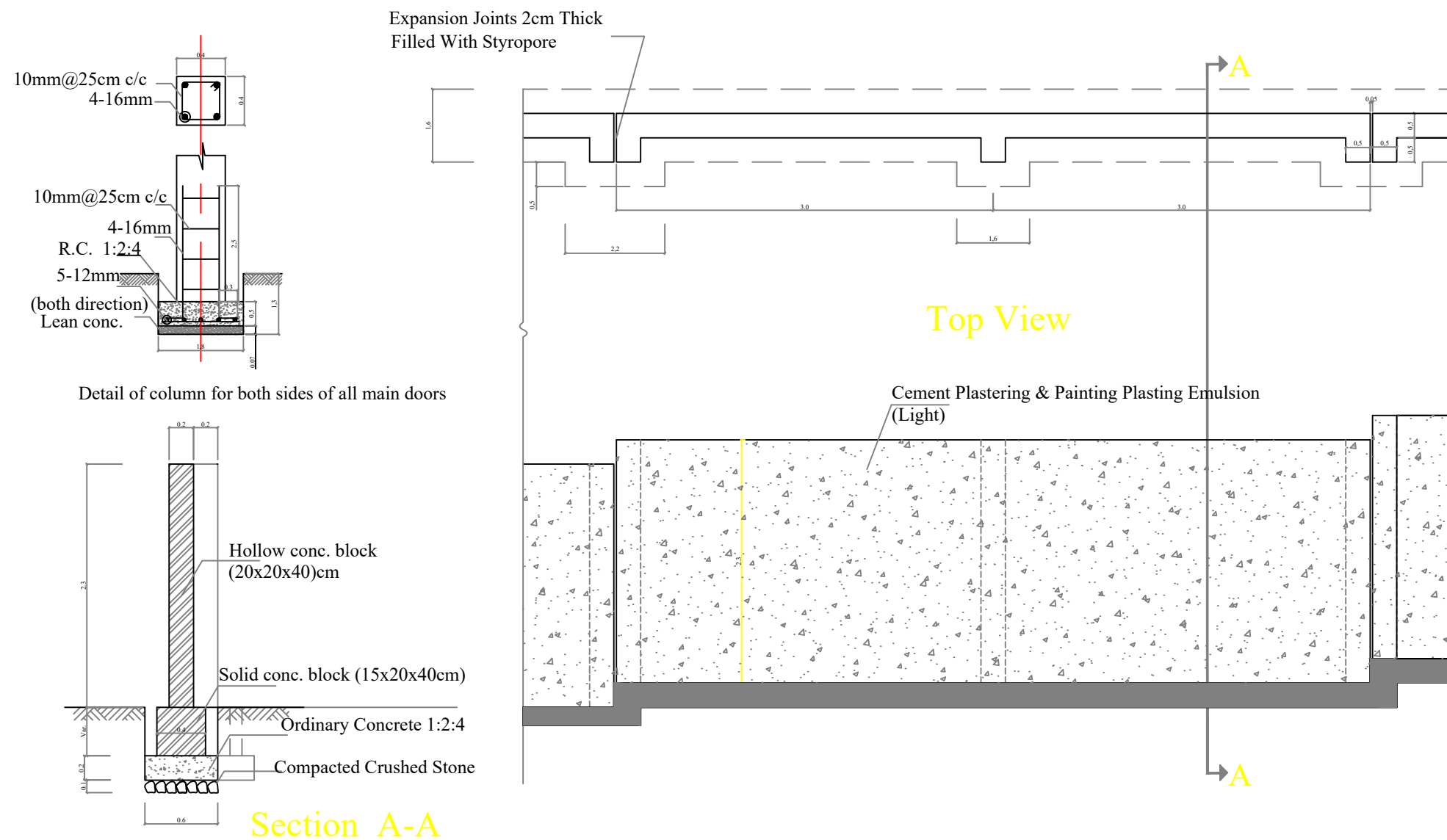


- Spotlight ○
- switch plug 13 Amp ,at
hight 130 cm above
FFL. ⚡
- Main Board ☒
- Circuit Breaker at hight
150 cm above FFL. ◼
- Celling Lamp (Big Size) ○
- Exhaust Fan
regulator at hight 130
cm above FFL. ⚙
- Electrical Fan ⚙
- Switch on / off ,at hight
130 cm above FFL. ⚡
- Lamp Fluorescent 2x40
Watt ⚡
- Lamp Fluorescent 1x40
Watt ⚡
- Electrical Bell 🔔
- Electrical Push Switch ⚡
- LED 60x60 72Watt ☐

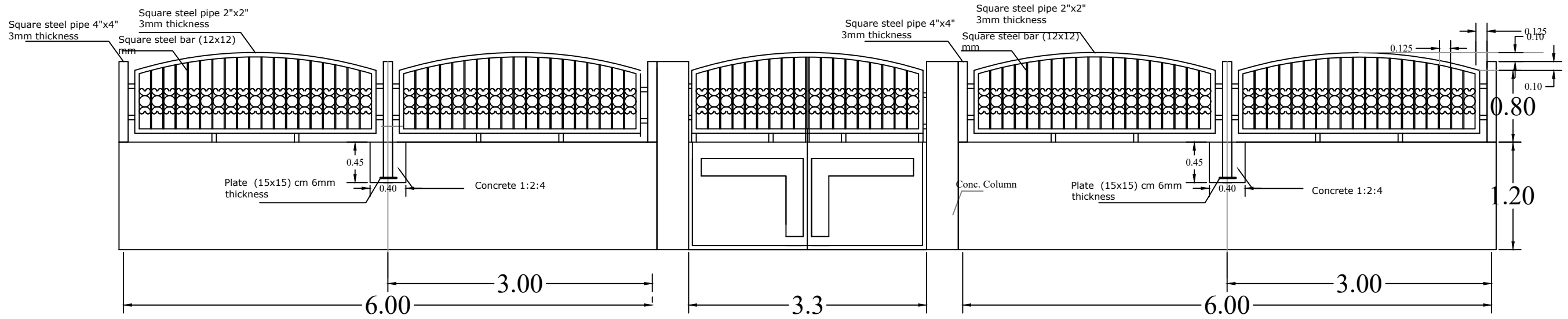


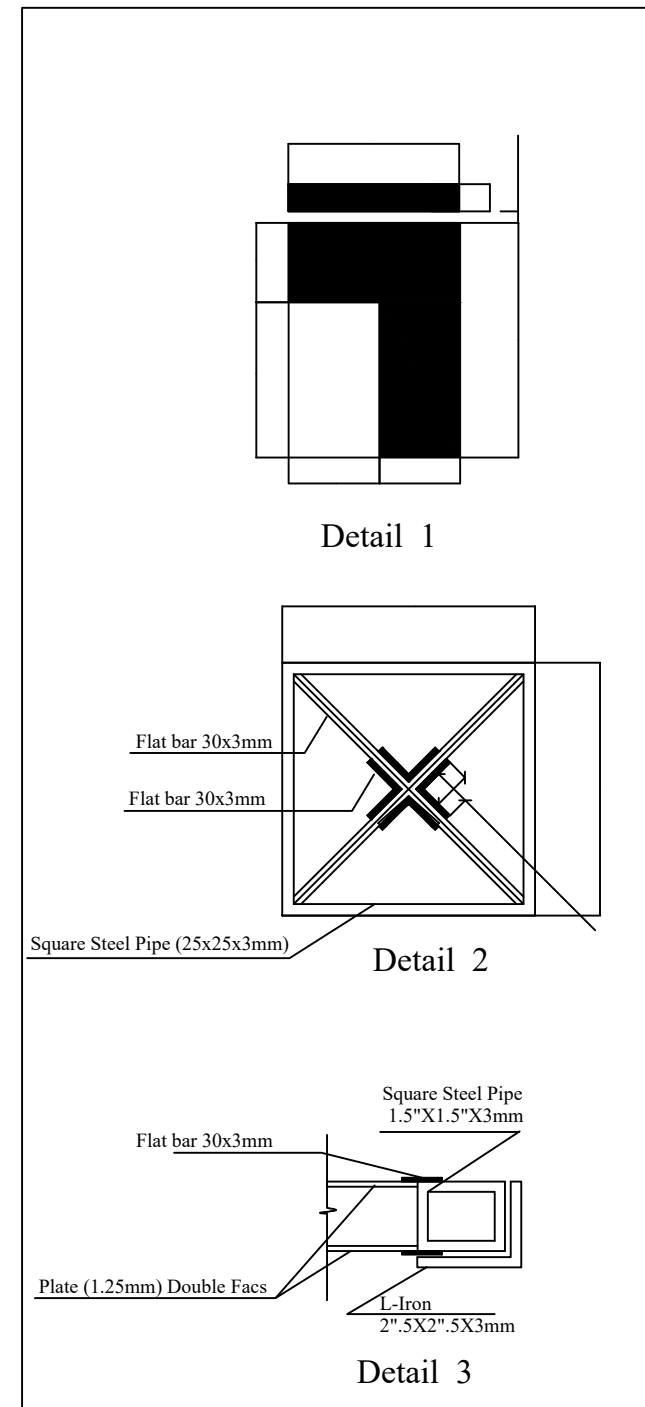
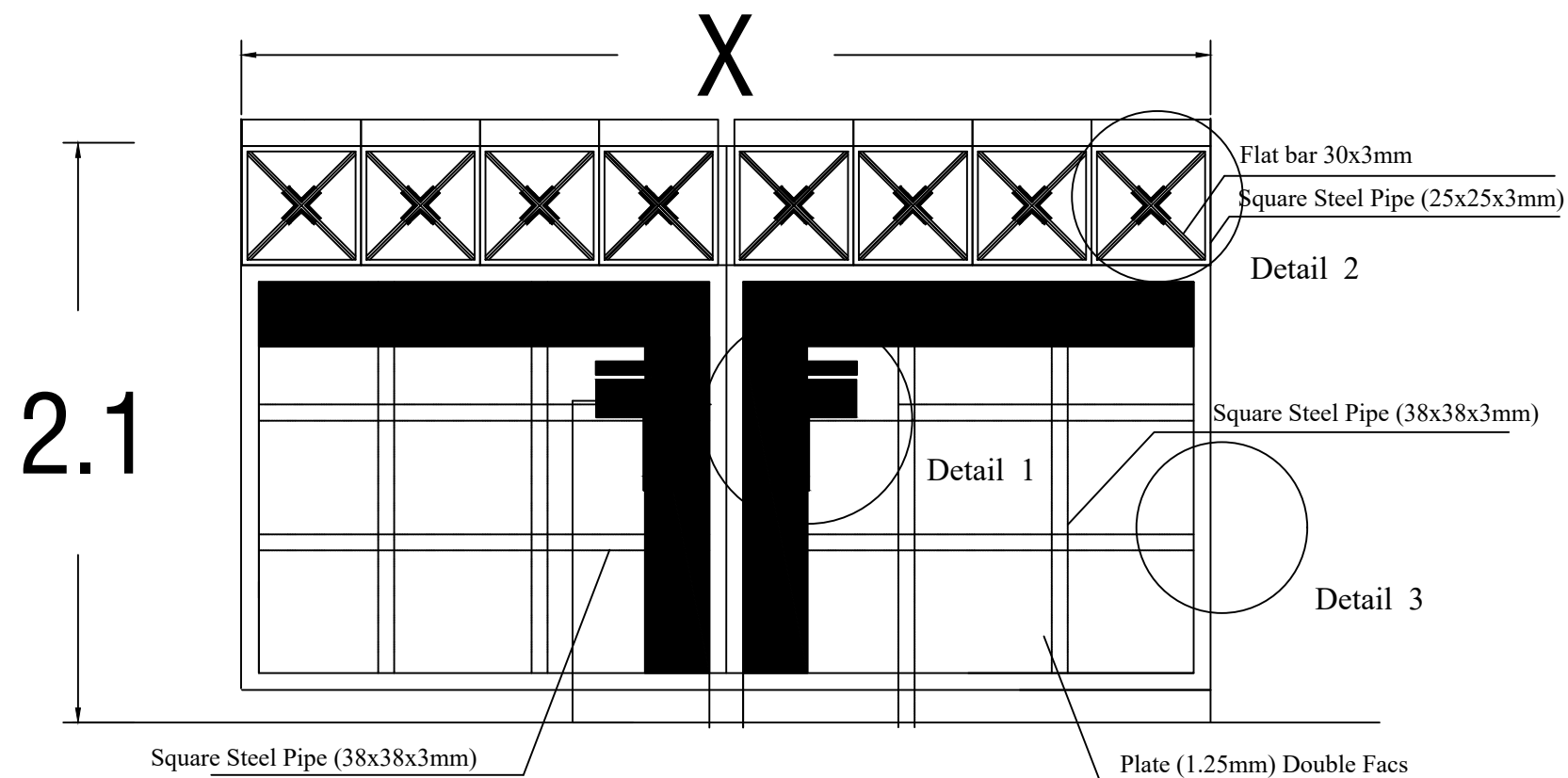


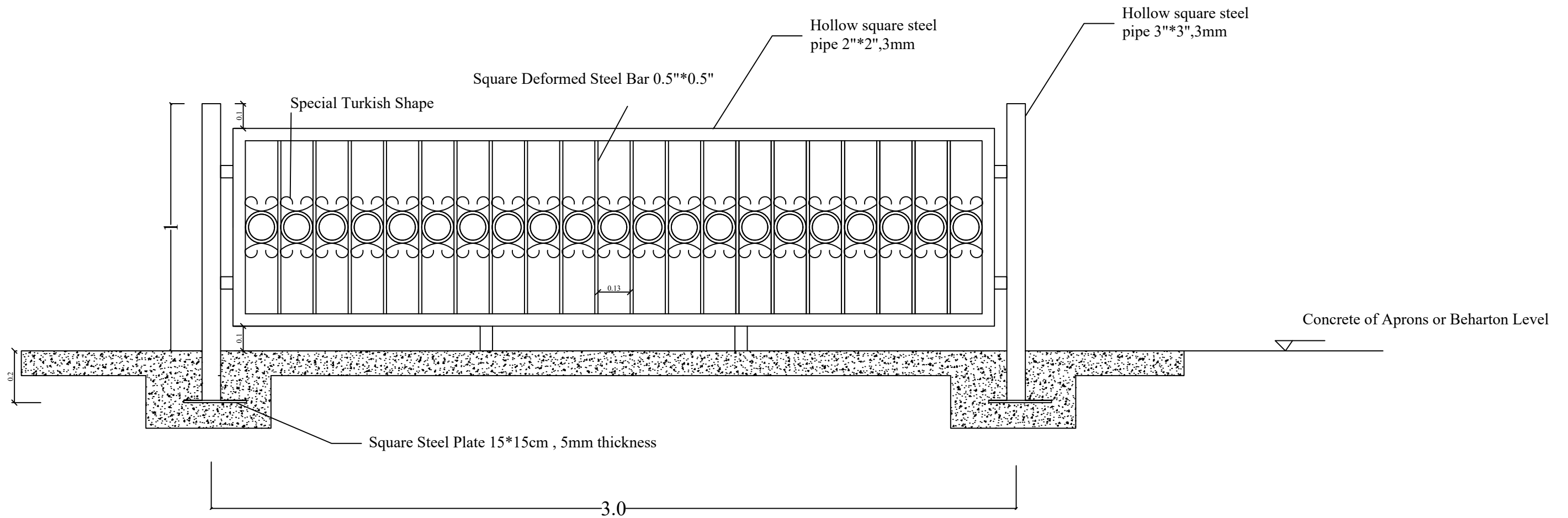


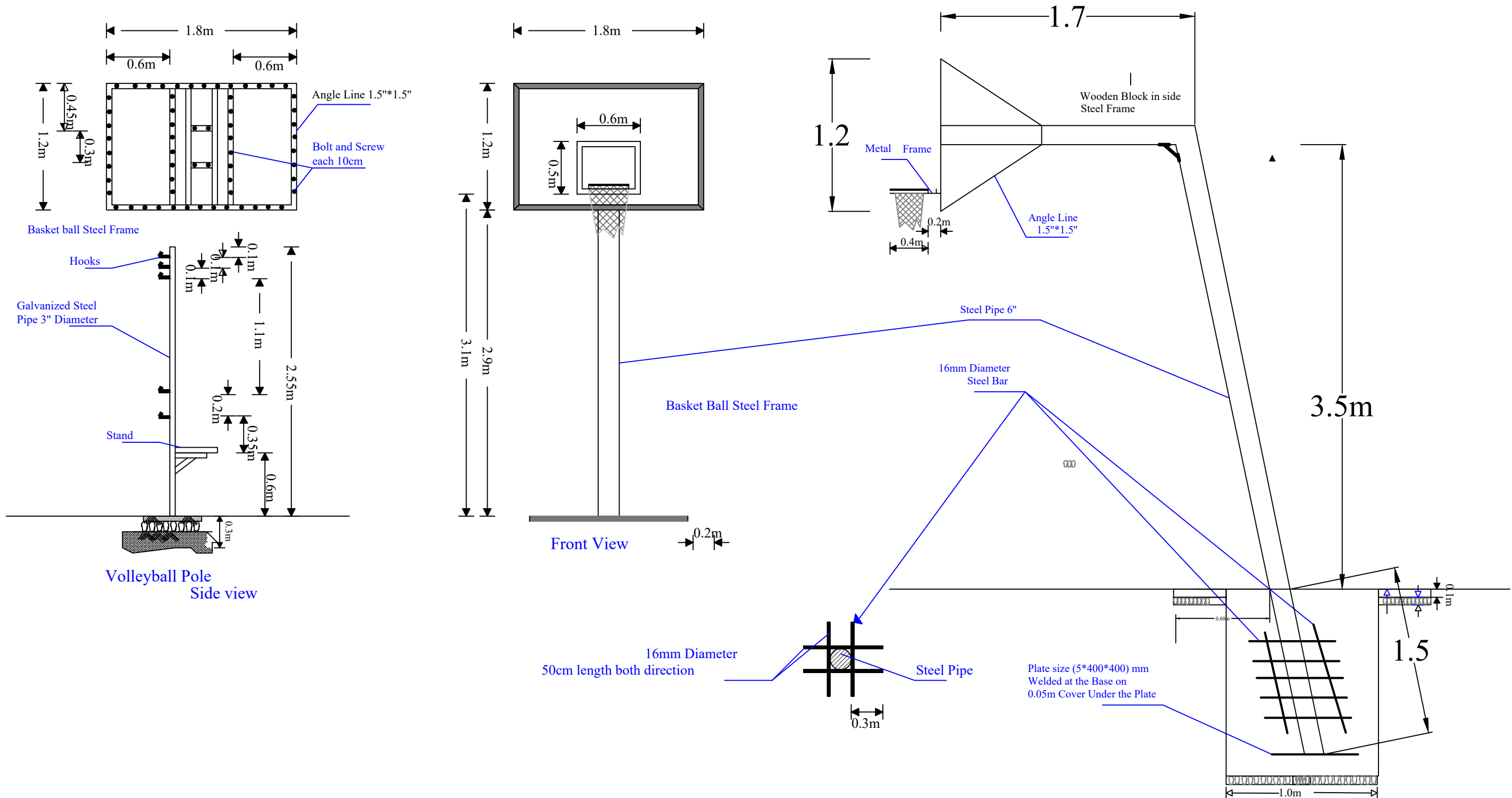


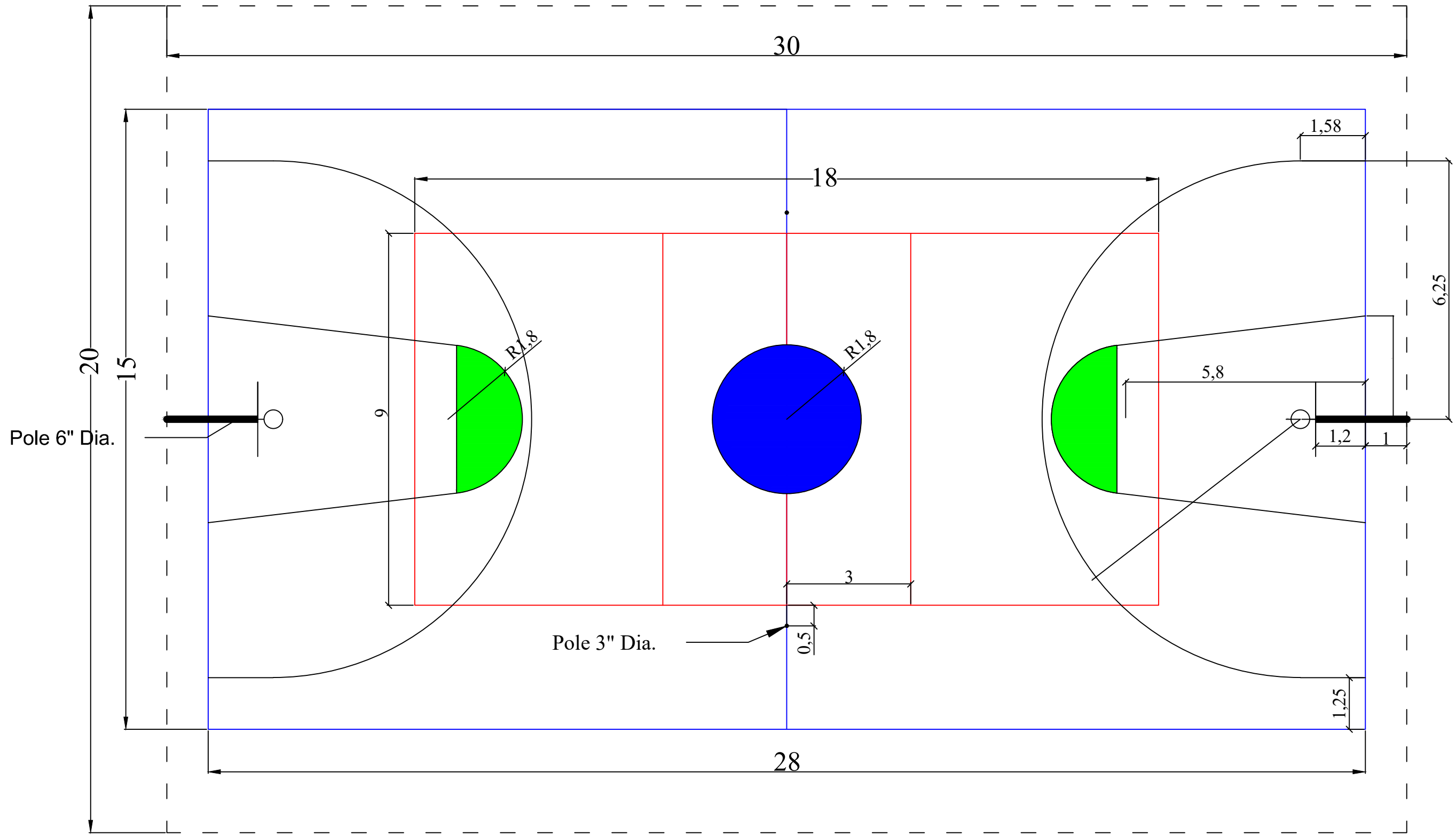
Note:
location & all other Details for the retaining walls to be Taken into Consideration.

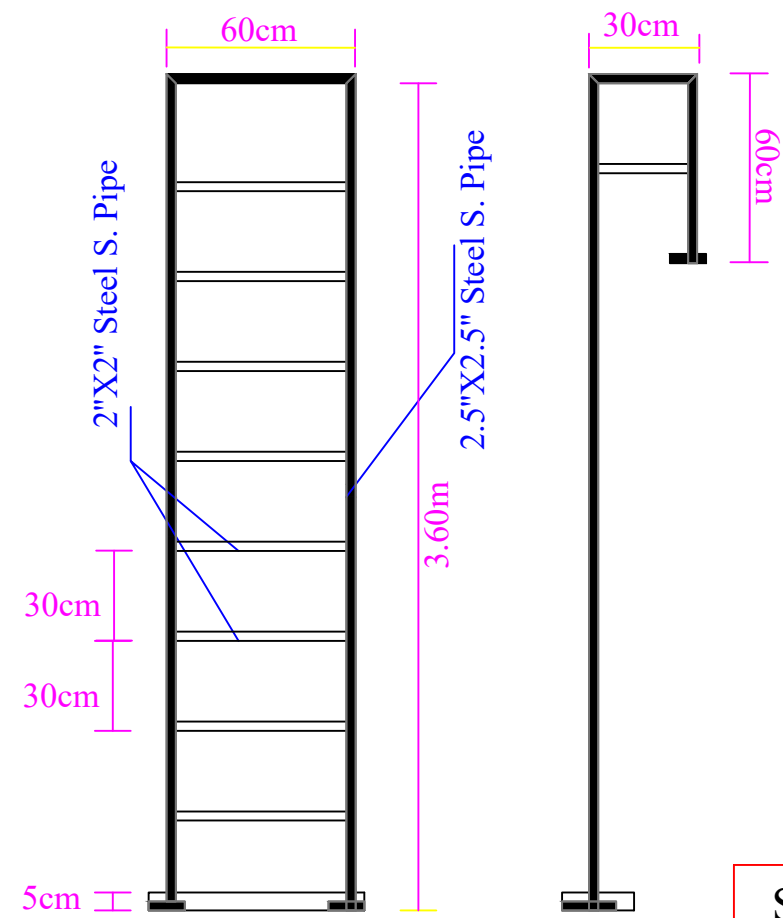












Steel Stair

