

# PROTECTING VULNERABLE MIGRANTS

1

May 23, 2013

Rukiya Brown  
IOM, Kingston



# MIGRATION IN THE CARIBBEAN



Approximately 1 million  
migrants in the Caribbean

Source: Estimations based on UN DESA, Population Division (2009). *Trends in International Migrant Stock: The 2008 Revision*; IOM, *World Migration Report 2010 and National Censuses in the Region*.

# TYPES OF VULNERABLE PERSONS

- Victim of Trafficking
- Asylum Seeker
- Refugee
- Irregular Migrant
- Unaccompanied Minor
- Smuggled Migrant
- Stranded Migrant

# KEY DEFINITIONS - TRAFFICKING

Recruitment, transportation, transfer, harbouring or receipt of persons, by means of the threat or use of force or other forms of coercion, for purpose of exploitation

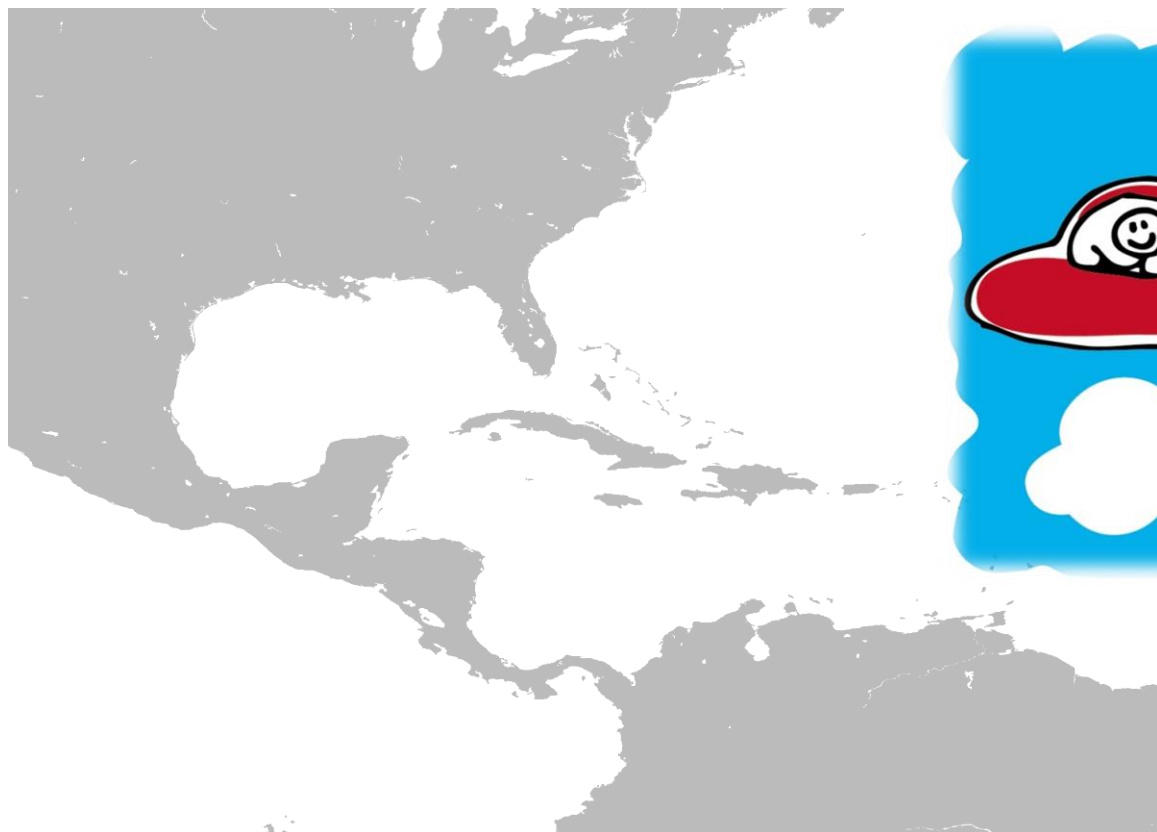
*(Protocol to Prevent, Suppress, and Punish Trafficking in Persons, Especially Women and Children, Supplementing the United Nations Convention against Transnational Organized Crime, 2000)*



# Key Definitions cont..

- Unaccompanied minor – a person under 18 years of age who has been separated from both parents and is not being cared for by an adult, who by law or custom, is responsible for doing so
- Asylum seeker - persons seeking to be admitted into a country as refugees and awaiting decision on their application for refugee status
- Refugee - A person, who “owing to well-founded fear of persecution for reasons of race, religion, nationality, membership of a particular social group or political opinions, is outside the country of his nationality and is unable or, owing to such fear, is unwilling to avail himself of the protection of that country”  
*(Convention relating to the Status of Refugees, Art. 1A(2), 1951 as modified by the 1967 Protocol).*

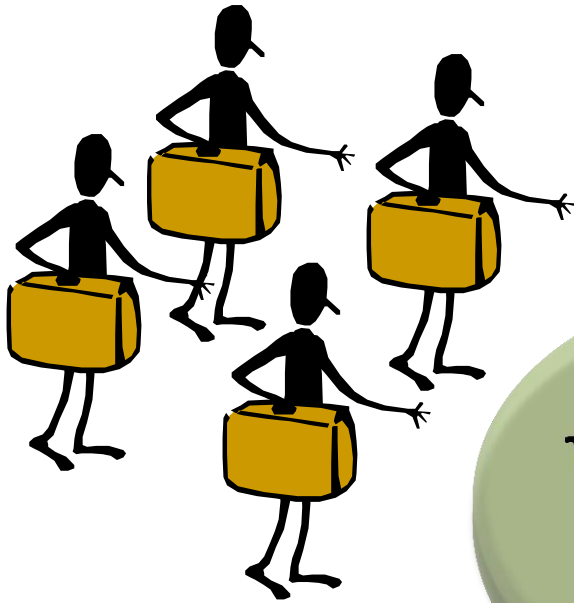
# CARIBBEAN MIGRATION PROFILE



A flight to/within the Caribbean may carry:

- 1) Someone who's returning to their country of origin after 20 years abroad
- 2) A person who came to work
- 3) A non-national hoping to go to the US
- 4) A Tourist

# MIXED MIGRATION FLOWS



**Different reasons  
for migrating**

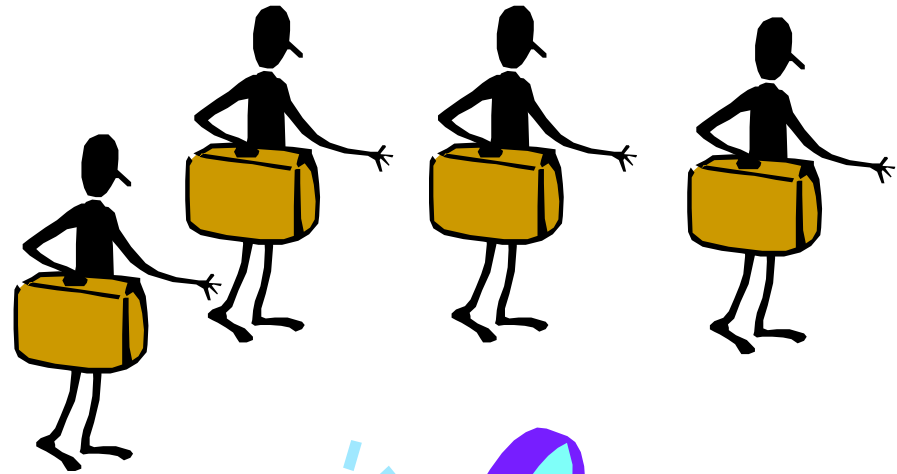
**Same  
transportation  
Mode**

**Same travel  
route**

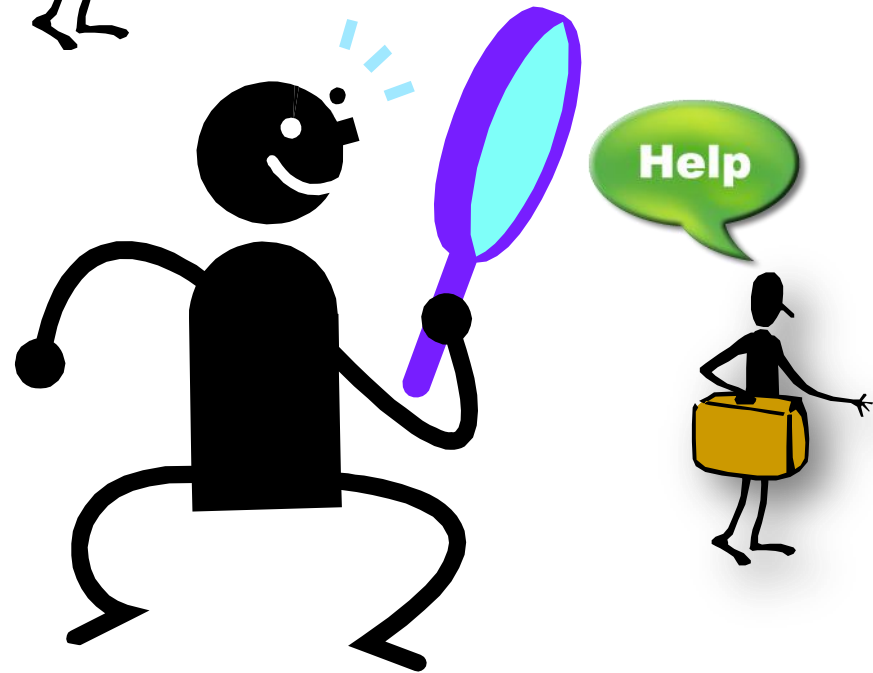


# PROTECTING THE VULNERABLE MIGRANTS

- Not all are vulnerable
- For many, migration is a positive and empowering experience



For some, the combination of encountered risks and resulting situation, render them particularly vulnerable and in need of protection.





# Screening helps us to “LOOK BENEATH THE SURFACE”



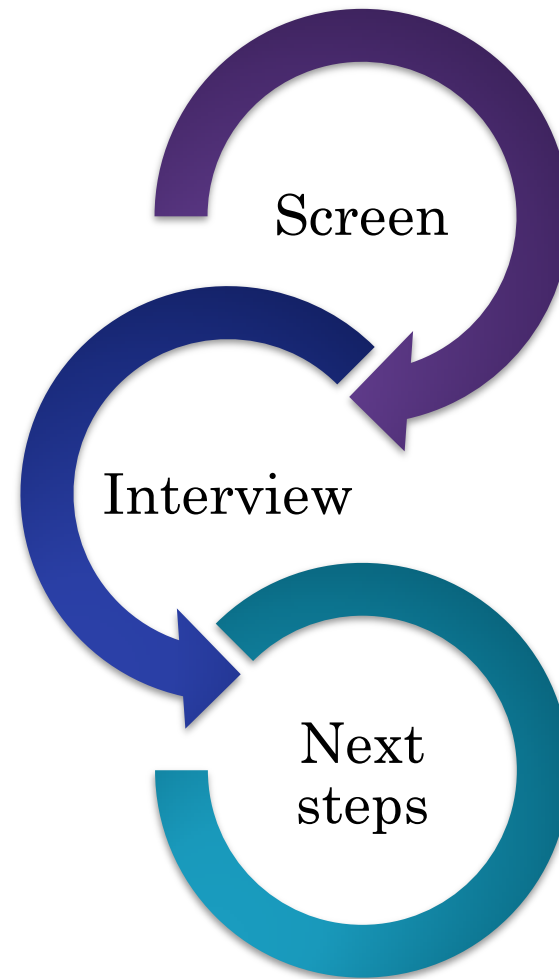
- Determine who is the most vulnerable migrant
- Determine the protection needs
- Determine our response to fulfill those needs



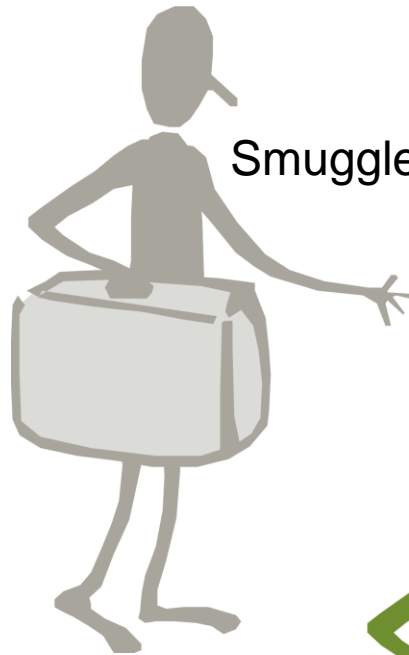
# SCREENING HELPS DETERMINE WHO IS THE MOST VULNERABLE AND IN NEED

- Asylum seeker
- Refugee
- Victim of trafficking
- Child
- Elderly
- Woman

Or any combination thereof

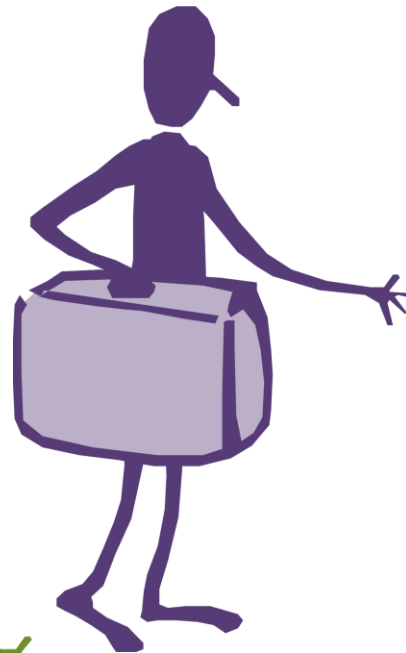


In a mixed migration context,  
screening helps you determine the difference

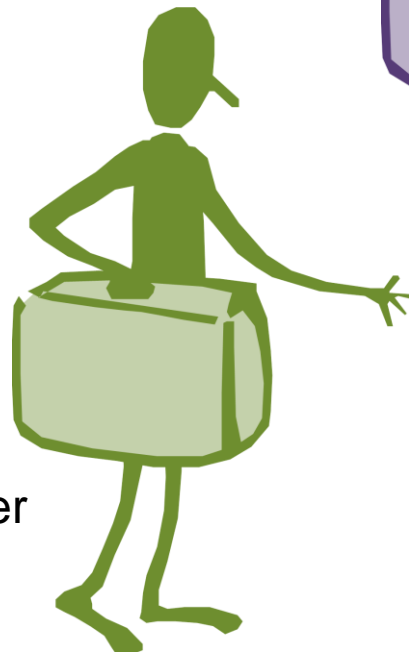


Smuggled migrant

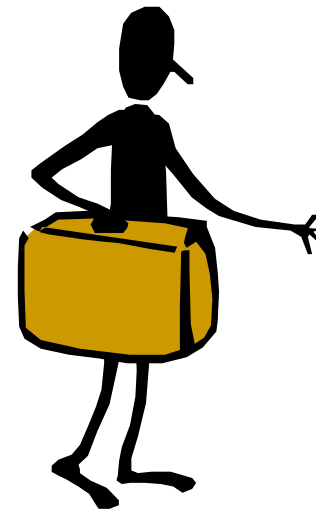
Victim of trafficking



Refugee



Asylum seeker



Stranded migrant

# IN THE COUNTRY OF ORIGIN OR DURING THE JOURNEY

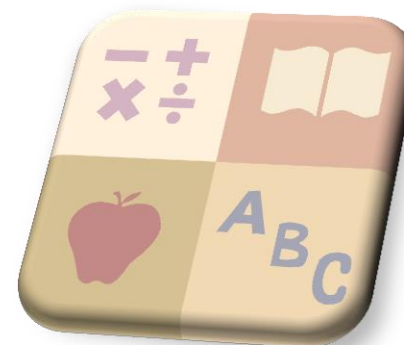
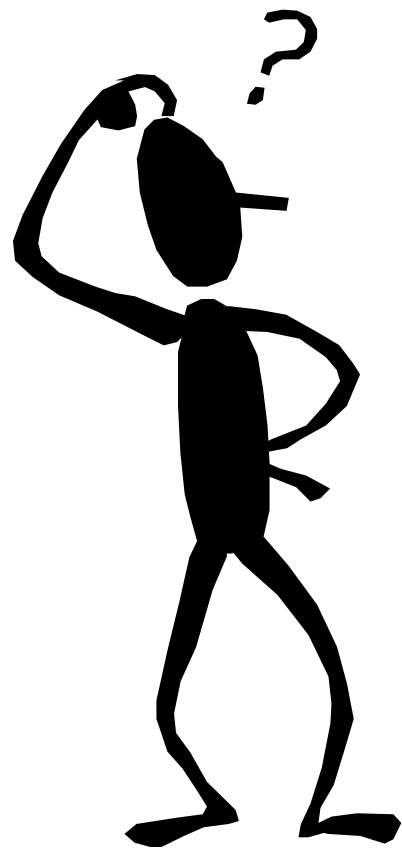


## Particularly vulnerable because:

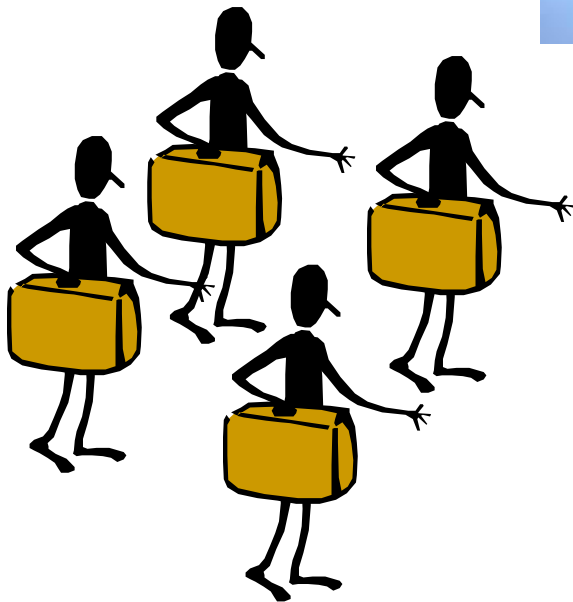
- the movement was forced (e.g. conflict, disaster, escaping human rights violations)
- unprepared to depart
- separated from family
- lack experience, support networks and resources
- have past traumatic experiences
- have to interrupt their journey, for example, due to lack of money or adequate documentation, and become **stranded**.

# IN THE COUNTRY OF DESTINATION

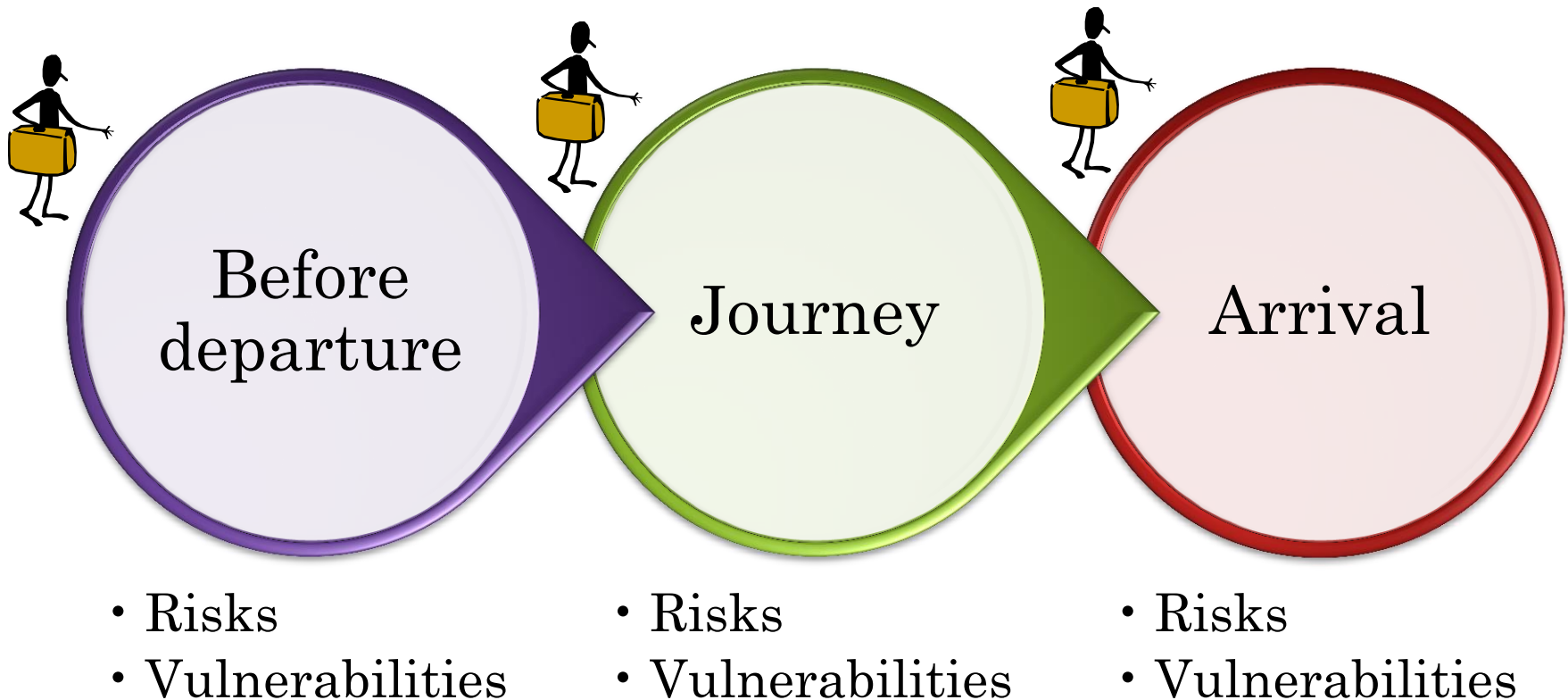
particularly vulnerable because:



# MIGRANTS CAN ENCOUNTER



# PROTECTING VULNERABLE MIGRANTS



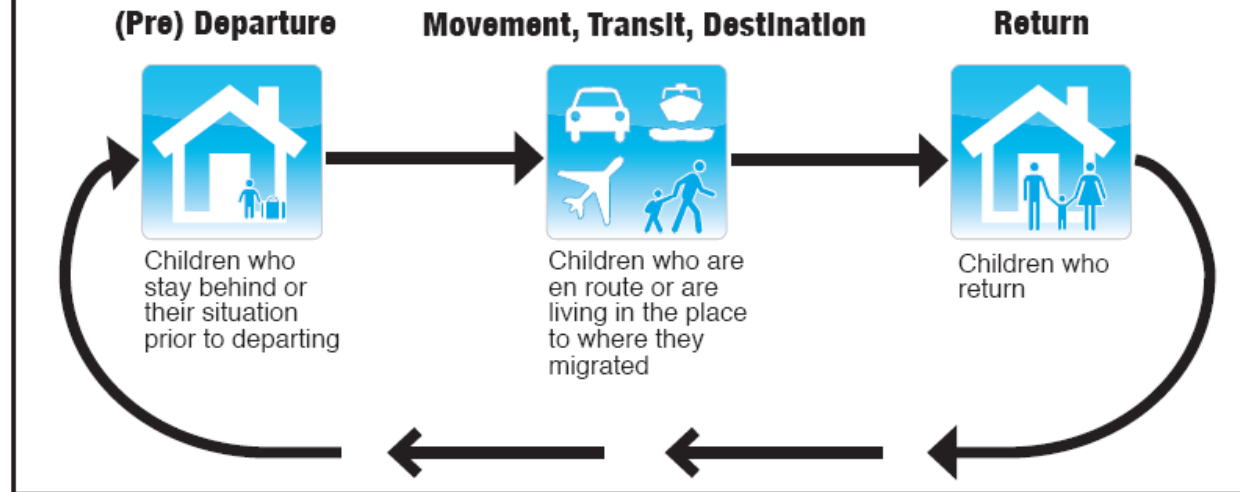
**Vulnerable migrants + specific protection needs =  
We respond with a customized approach**

# PROTECTION SERVICES

- Shelter
- Interviews
- Psychological or medical services
- Material assistance (food, clothing etc.)



## Children Affected by Migration in the Region



## CHILDREN AS A PARTICULARLY VULNERABLE GROUP

17

Protecting Vulnerable Migrants while Addressing a Mixed Migration Context

THANK YOU

