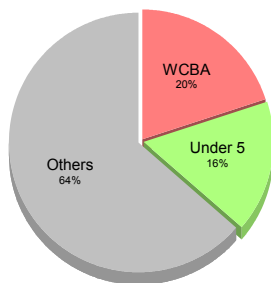


Origin of refugees:

Population: 3,500



Implementing partners:

- Health/HIV:
- Nutrition:
- Watsan:



Public Health Status

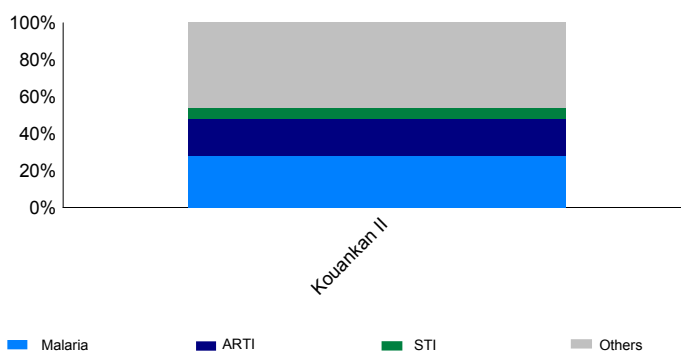
Health Impact

Indicator	Standard	Status	
Crude Mortality Rate (CMR) (/1000/month)	0.38	< 1.5	✓
Under-five Mortality Rate (U5MR) (/1000/month)	1.54	< 3.0	✓
Infant Mortality Rate (IMR) (/1000 livebirths)	38.5	< 60	✓
Neonatal Mortality Rate (NNMR) (/1000 livebirths)	0.0	< 40	✓

Human Resources

Indicator	Standard	Status	
No. of Medical Doctors	1 : 0	1 : <50,000	✓
No. of Clinical Consultants	1 : 0	1 : <10,000	✓
No. of Nurses (qualified)	1 : 0	1 : <10,000	✓
No. of MCH staff / Midwives	1 : 0	1 : <10,000	✓
No. of Community Health Workers (CHW)	1 : 0	1 : 500-1,000	✗
No. of Hygiene Promoters	1 : 0	1 : <500	✓

Figure 1: Proportional Crude Morbidity



Country Overview

A. Objectives

1a.

2a.

3a.

4a.

5a.

B. Progress

To what extent was each objective achieved? (use indicators to give examples of achievements).

1b.

2b.

3b.

4b.

5b.

C. Gaps & Planning

What conditions / activities are needed next year in order to produce the expected results?

1c.

2c.

3c.

4c.

5c.

Key observations

What were the key activities carried out during the year? To what extent did the activities achieve expected results?

Limitations/constraints

What external factors and/or conditions outside your direct control affected implementation of Public Health Programmes planned activities?

Public Health Programmes

Coordination

Do monthly coordination meetings take place? **Yes** (i)

Access and Utilisation

Indicator	Standard	Status	
No. of health facilities	1 : 0	1 : <10,000	✓
No. of consultations per trained clinician per day	9	< 50	✓
Health Utilization Rate (new visits/person/year)	2.0	1 - 4	✓
Proportion of consultations by host population	2%		

Malaria

Is Act introduced as 1st line malaria treatment? **Yes** (i)

Key observations

What were the key activities carried out during the year? To what extent did the activities achieve expected results?

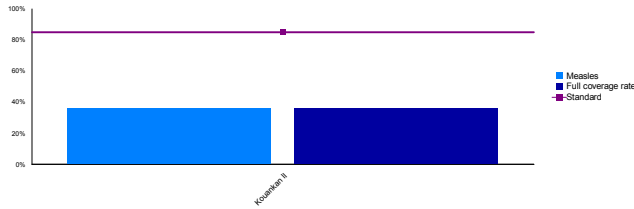
Limitations/constraints

What external factors and/or conditions outside your direct control affected implementation of Public Health Programmes planned activities?

Public Health Programmes

IMMUNISATION

Figure 2: Vaccination coverage



NUTRITION AND FOOD SECURITY

Surveys & Assessments

Date of last nutrition survey
Date of last last JAM

Indicator Standard

Malnutrition

Global Acute Malnutrition Rate (%) < 5%

Severe Acute Malnutrition Rate (%) < 2%

Prevalence of anaemia in children under five < 20%

Prevalence of anaemia in women of reproductive age < 20%

Average number of kilocalories per person per day 2100

Food Security

Does UNHCR provide complementary food?
Did the content of the GFR change during the year?
Did WFP report any pipeline breaks during the year? No

Have PoC been included in the National FS Plan? Yes

Prop. of ration sold by refugees to buy other food items % < 30%

REPRO HEALTH

Maternal and Newborn Health

Coverage of complete antenatal care (4 or more visits) 106% 100%

Proportion of deliveries attended by skilled personnel 100% ≥ 50%

Proportion of deliveries performed by caesarean section 3% 5 - 15%

Proportion of low birth weight deliveries 4% < 15%

Family planning

Contraceptive prevalence rate ≥ 30%

SGBY

Sexual and Gender-based Violence

Incidence of reported rape (/10,000/year) 0.00

Prop. rape survivors who received PEP < 72h 100%

Prop. rape survivors who received ECP < 120h 100%

Prop. rape survivors who received STI < 2 wks 100%

Indicator Standard

HIV/AIDS

Monitoring & Evaluation

Are PoCs included in national HIV strategic plans? Yes

Are PoCs included in national HIV sent surveillance? Yes

Date of last last KAPB/BSS

Prevention

Condom distribution rate 0.99 > 0.5

Do appropriate IEC materials exist for PoCs? Yes

Are risk groups targeted with prevention programmes? Yes

Proportion of blood units screened for HIV 100%

PMTCT coverage 100%

Care and Treatment

Do PoCs have equal access to ART as host? Yes

Number of PoCs receiving ART

Prop. HIV positive mothers receiving co-trimox 100%

Prop. HIV positive infants receiving co-trimox 100%

Indicator Standard

WASH

Water, Sanitation and Hygiene

Av quantity of potable water / person / day (litres) > 20

No. of persons per usable water tap < 80

No. of persons per drop-hole in communal latrine ≤ 20

Prop. of population living within 200m from water point 100%

Prop. of families with latrines 100%

Prop. families receiving >250g soap / person / month ≥ 90%

Prop. camps with 1 hygiene promoter / 500 persons ≥ 75%

Indicator Standard

Camp opened: **Population:** 3,500
Camp closed: The source of population data in this report is:
HIS start date: Oct 2007

Origin of refugees: **Implementing partners:**
 Health/HIV:
 Nutrition:
 Watsan:



Public Health Status

Health Impact

	Indicator	Standard	
Crude Mortality Rate (CMR) (/1000/month)	0.38	< 1.5	✓
Under-five Mortality Rate (U5MR) (/1000/month)	1.54	< 3.0	✓
Infant Mortality Rate (IMR) (/1000 livebirths)	38.5	< 60	✓
Neonatal Mortality Rate (NNMR) (/1000 livebirths)	0.0	< 40	✓

Figure 1: Crude and Under-five Mortality

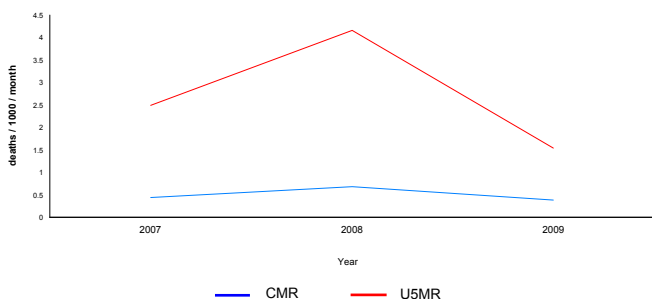


Figure 2: Crude Morbidity

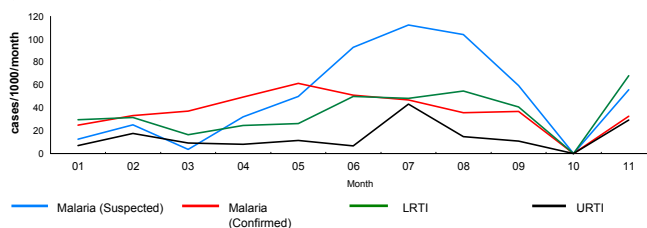
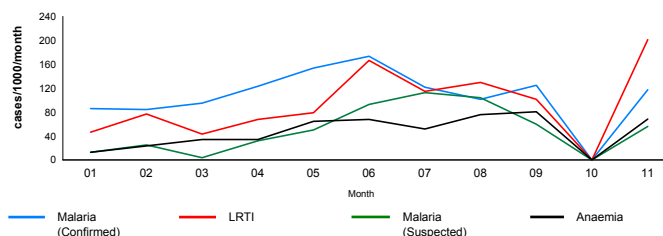


Figure 3: Under-five Morbidity



Public Health Programmes

Human Resources

	Nº	Indicator	Standard	
No. of Medical Doctors	1	1 : 0	1 : <50,000	✓
No. of Clinical Consultants	1	1 : 0	1 : <10,000	✓
No. of Nurses (qualified)	1	1 : 0	1 : <10,000	✓
No. of MCH staff / Midwives	1	1 : 0	1 : <10,000	✓
No. of Community Health Workers (CHW)	1	1 : 0	1 : 500-1,000	✗
No. of Hygiene Promoters	1	1 : 0	1 : <500	✓

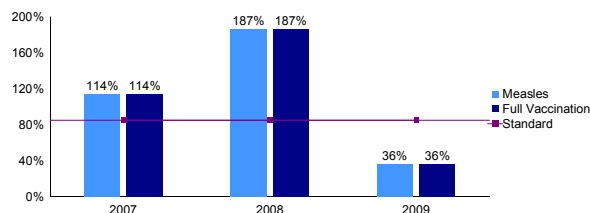
Access and Utilisation

	Nº	Indicator	Standard	
No. of health facilities	1	1 : 0	1 : <10,000	✓
No. of consultations per trained clinician per day	9	9	< 50	✓
Health Utilization Rate (new visits/person/year)	2.0	2.0	1 - 4	✓
Proportion of consultations by host population	2.21%	2.21%		

Malaria

Is Act introduced as 1st line malaria treatment?	Yes			ⓘ
--	-----	--	--	---

Figure 4: Vaccination coverage



IMMUNISATION

REPRO HEALTH

Maternal and Newborn Health

	Indicator	Standard	
Coverage of complete antenatal care (4 or more visits)	106%	100%	✓
Proportion of deliveries attended by skilled personnel	100%	≥ 50%	✓
Proportion of deliveries performed by caesarean section	3%	5 - 15%	✗
Proportion of low birth weight deliveries	4%	< 15%	✓

Family planning

Contraceptive prevalence rate		≥ 30%	ⓘ
-------------------------------	--	-------	---

Sexual and Gender-based Violence

	Indicator	Standard	
Incidence of reported rape (/10,000/year)	0.00		
Prop. rape survivors who received PEP < 72h		100%	ⓘ
Prop. rape survivors who received ECP < 120h		100%	ⓘ
Prop. rape survivors who received STI < 2 wks		100%	ⓘ

SGBV

Prevention

	Indicator	Standard	
Condom distribution rate	0.99	> 0.5	✓
Do appropriate IEC materials exist for PoCs?	Yes		ⓘ
Are risk groups targeted with prevention programmes?	Yes		ⓘ
Proportion of donated blood units screened for HIV	100%		ⓘ
PMTCT coverage	100%		ⓘ

HIVAIDS

Care and Treatment

Do PoCs have equal access to ART as host?	Yes		ⓘ
Number of PoCs receiving ART			
Prop. HIV positive mothers receiving co-trimox	100%		ⓘ
Prop. HIV positive infants receiving co-trimox	100%		ⓘ

WASH

Water, Sanitation and Hygiene

Av quantity of potable water / person / day (litres)		> 20	ⓘ
No. of persons per usable water tap		< 80	ⓘ
No. of persons per drop-hole in communal latrine		≤ 20	ⓘ
Prop. of population living within 200m from water point		100%	ⓘ
Prop. of families with latrines		100%	ⓘ
Prop. families receiving >250g soap / person / month		≥ 90%	ⓘ

NUTRITION

Malnutrition

Global Acute Malnutrition Rate (%)		< 5%	ⓘ
Severe Acute Malnutrition Rate (%)		< 2%	ⓘ
Prevalence of anaemia in children under five		< 20%	ⓘ
Prevalence of anaemia in women of reproductive age		< 20%	ⓘ
Average number of kilocalories per person per day		2100	ⓘ

Observations