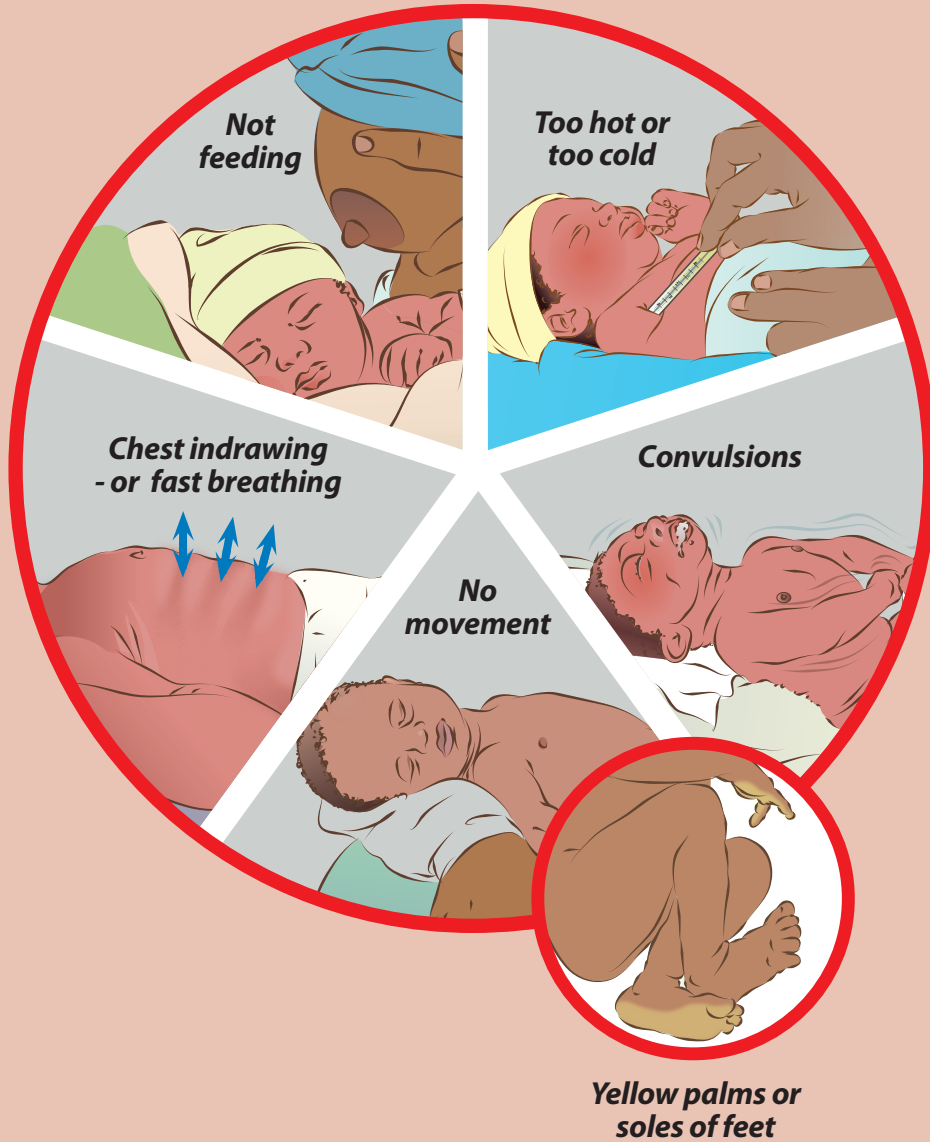


# Danger Signs

← DANGER SIGNS

ESSENTIAL CARE →

**Seek health care immediately!**



## Help your baby survive



### NOTES

Baby's birth weight: ..... grams

Date and location of next follow-up appointment: ...../...../.....

Clinic:.....

Health worker contact:.....

Other notes: .....

### OBSERVATIONS AND ADVICE



**Helping Babies Survive**

# Essential Care

## Feed only breastmilk



## Wash hands

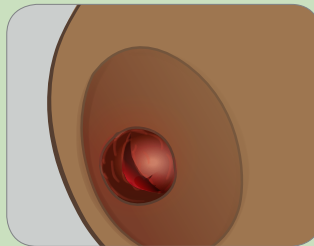


## Manage common breast problems

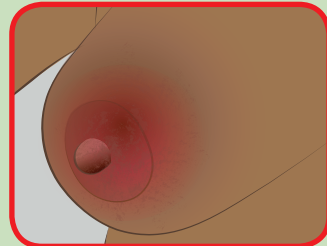
Full breasts



Cracked nipples



Tender and red breasts

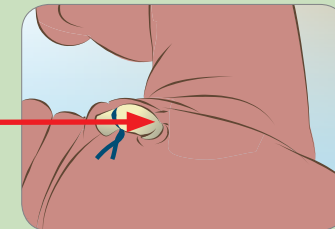


Seek advice

Seek health care urgently



## Put nothing on cord



## Have your baby immunized

