



REPUBLIQUE D'HAÏTI

SYSTÈME
NATIONAL DE
GESTION DES
RISQUES ET DES
DÉSASTRES

JEAN-BUTEAUX
CORIOLAN,



DATA COLLECTION AND PROCESSING IN EMERGENCY SITUATIONS

Conference of Bahamas

Wednesday May 22, 2013



Comprehensive Disaster Risk
Management (J1200654)
Haiti Job Report

PRESENTATION OF HAITI

● Statistics ● Napshot ● Hazards and disasters



- 10 413 211 millions inhabitants
- Nearly 2.5 million in Port-au-Prince
- 40% of young people are aged 0-14 years old



- 56 % of Haitians live on less than one dollar per day ; 76% less than two dollars
- GDP per capita : US\$ 1.200

Area

- 27 750 sq km or 10,714 sq mi
- 10 Departments
- 42 Arrondissements
- 140 Communes
- 64 Quarters
- 570 Communal sections

Human Development Index

- 0.454 – 158th out on 187 countries

Languages

- Haitian creole, french



CUBA



2 main seasons

- Rainy : from April to June and from September to November
- A relatively Dry : from December to March

Temperature

- 25 ° C to 30 ° C in the plains
- 15 ° C and 20 ° C in the mountains



Capital : Port-au-Prince

Head of State : President Joseph Michel Martelly

Head of Government : Prime Ministry Laurent Salvador Lamothe



- Haiti, first independent black Republic is internationally known for its culture, painting, music and its welcome to visitors.



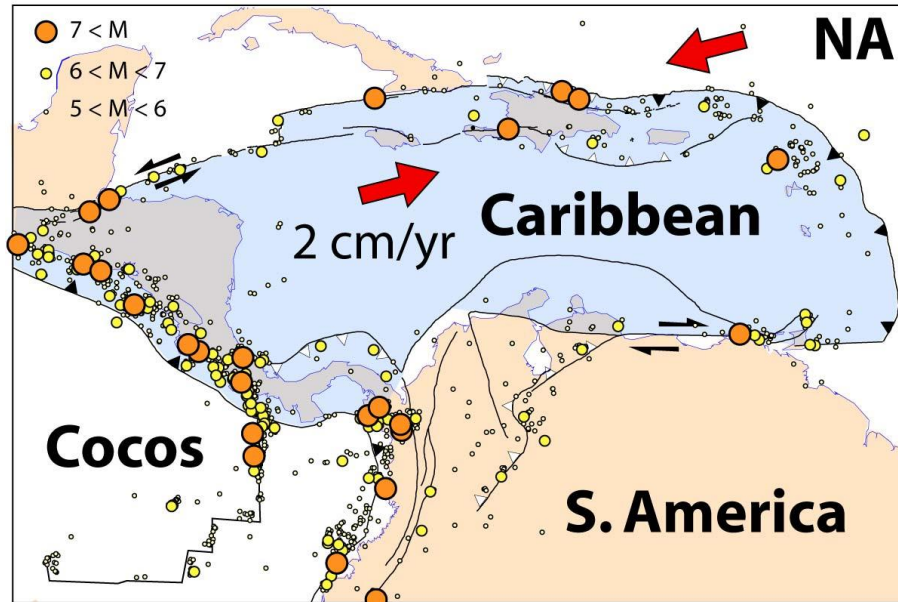
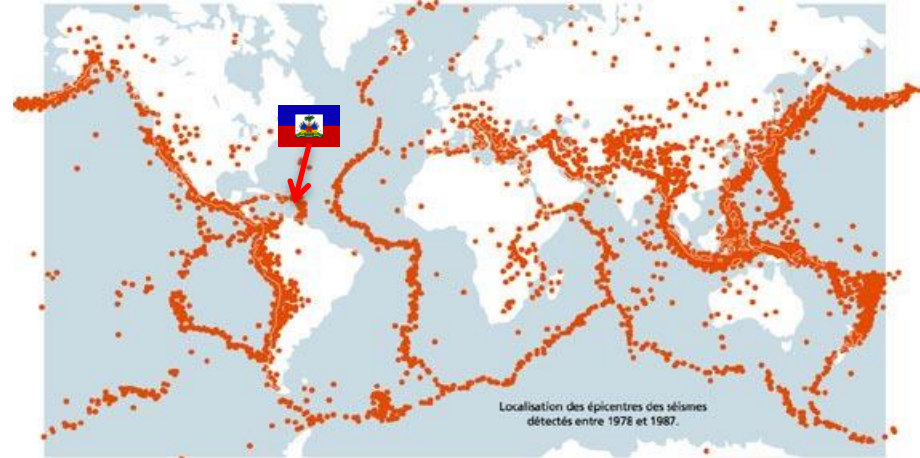
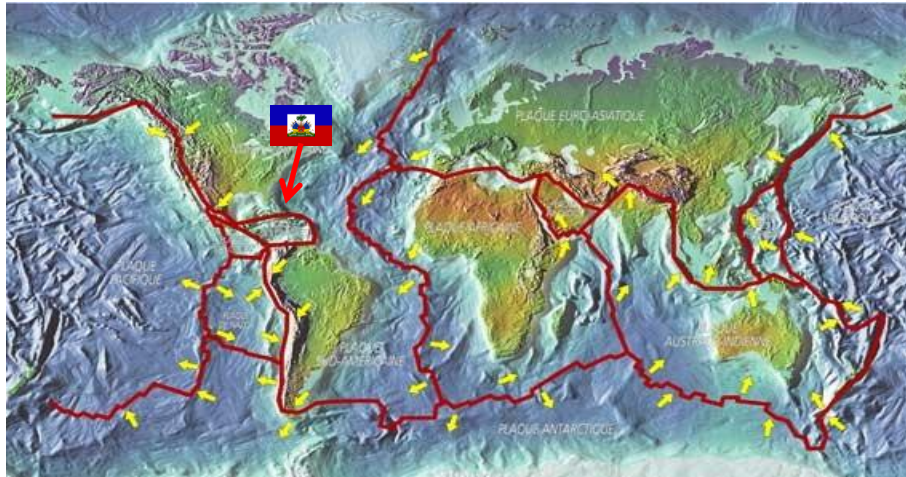
- Banner announcing the 2013 carnival
- Sans-souci Palace, Milot
- Mural at Toussaint Louverture International Airport, Port-au-Prince
- Haitian Artisanat !



Experience it !



The Greater Antilles in general, and Haiti in particular, is an active seismic region



Sismicité historique en Hispaniola (avant 1960)
(localisations approximatives sauf pour la séquence de 1946-1953)



- ★ SEISME MAJEUR
- ☆ AUTRE SEISME IMPORTANT
- ☆ SEISME MODERE (NOAA DB)
- ☆ FORT SEISME, VILLE DETRUITE
- ★ SEQUENCE DE 1946-1953
- ☆ PALEO-SEISME



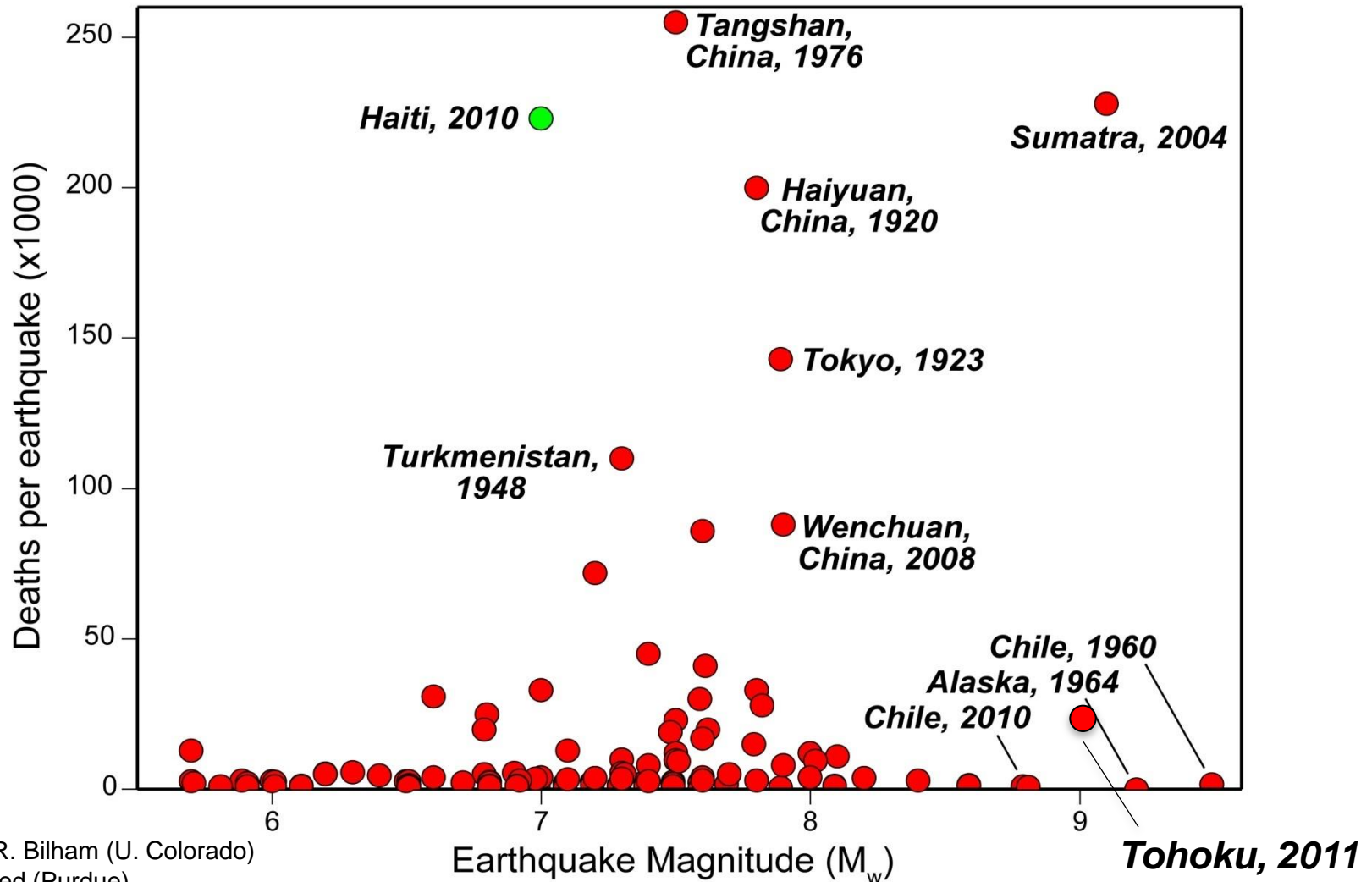
- **Date** : 4:53 pm, Jan. 12th, 2012 – **Epicenter** : near Léogâne (Ouest Dept) . **Scale** : 7.0 on Richter - **Dead** : More than 217.000 - **Financial damage** : 120% of GDP



- **Inadequate foundation** – liquefaction observed in the Port area ; **Inadequate design** – soft story building ; **Unsuitable materials** , **Inadequate planning**



■ Improvement opportunities....





■ IDP remained in shelters

...2010

1.500.000 IDPS
in **1565 camps**



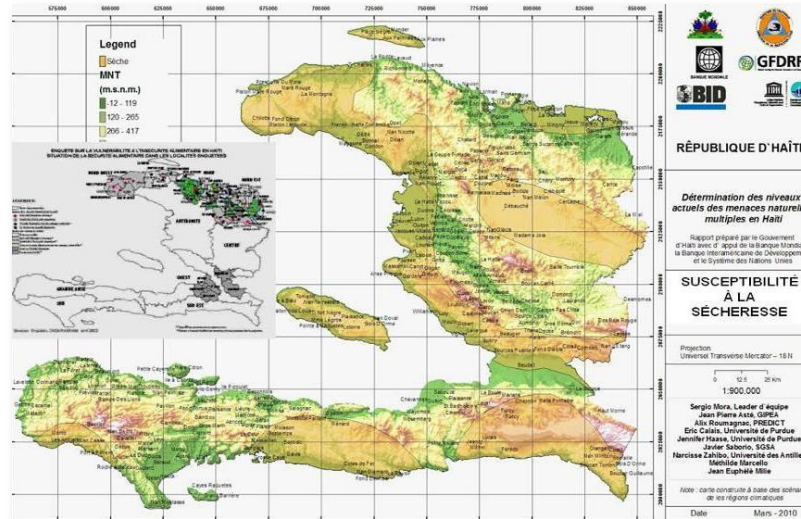
May 2013

320.000 IDPS
in **385 sites**

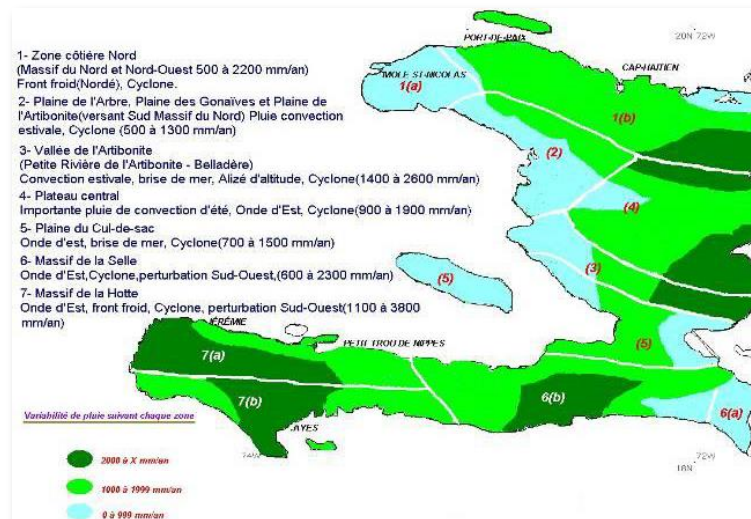




Hydrometeorological and climate-related hazards : Droughts; Heavy rainfall ; Average rainfall and climate zones ; flood hazard



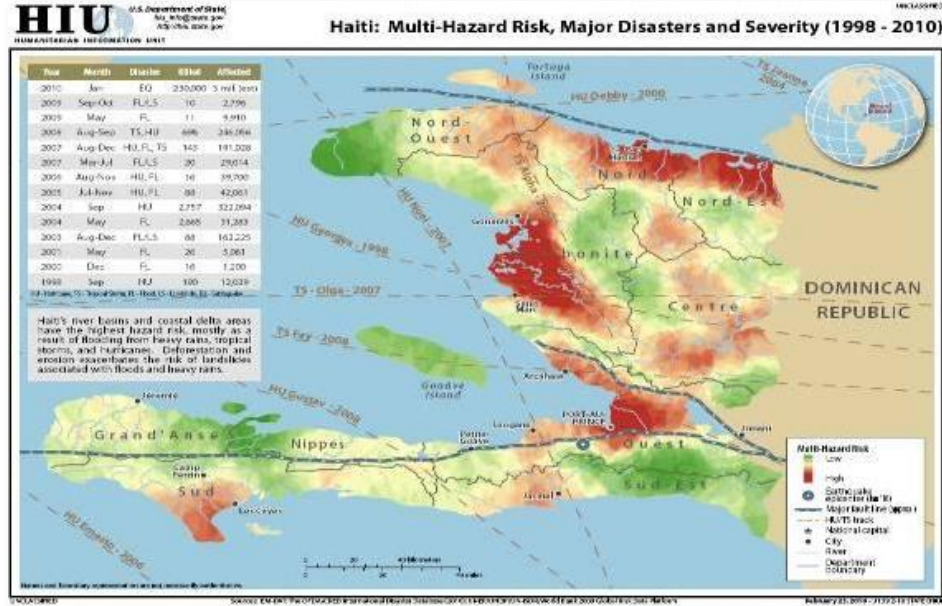
- Map of the regions most exposed to drought. The insert box shows the regions hardest hit by food insecurity.



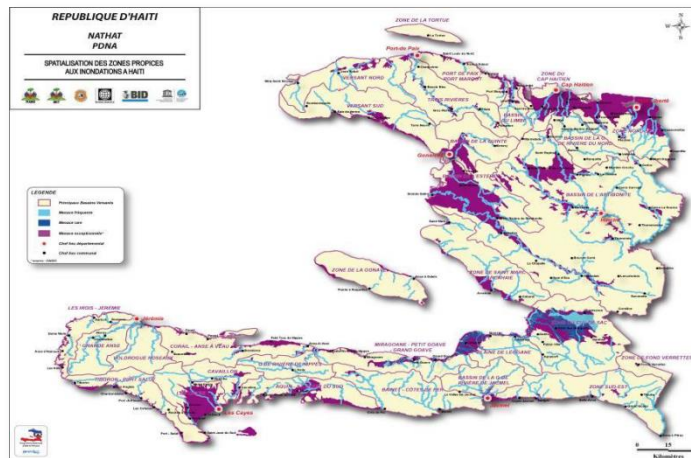
- Main sources of rainfall and climate zoning (Source: National Meteorological Center of Haiti)



Hydrometeorological and climate-related hazards : Droughts; Heavy rainfall ; Average rainfall and climate zones ; flood hazard ; Hurricane



- Cyclonic events and floods in Haiti (1998-2010). Source: EM-DAT–International Disaster Database



- Preliminary map of the hazard of river flooding in Haiti.





- In 2008 and less than a month, hurricanes and tropical storms Fay, Gustav, Hannah and Ike caused 793 deaths and injured 548,



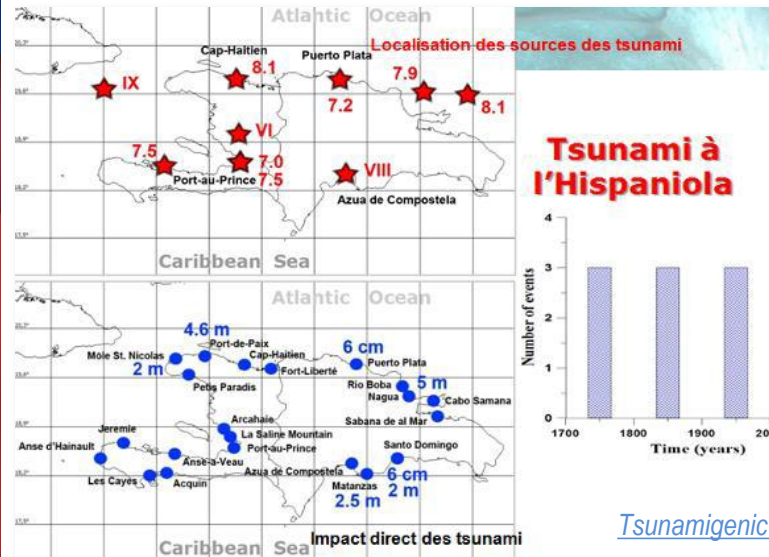
- Hinche, Centre – Route de l’Amitié, Sud-est – Cabaret, Ouest – Gonaïves, Artibonite, in 2008



- External geodynamic hazards : Slope failure
- Coastal hazards: tsunami ; The effects of storms ; Storm surge ; Coastal flooding ; Coastal erosion



Le Village commercial center, Montana hotel; December 6, 2009; and February 16, 2010



Delta coastline in southeast Port-au-Prince, overrun by urban development.

Tsunamigenic earthquakes on the island of Hispaniola



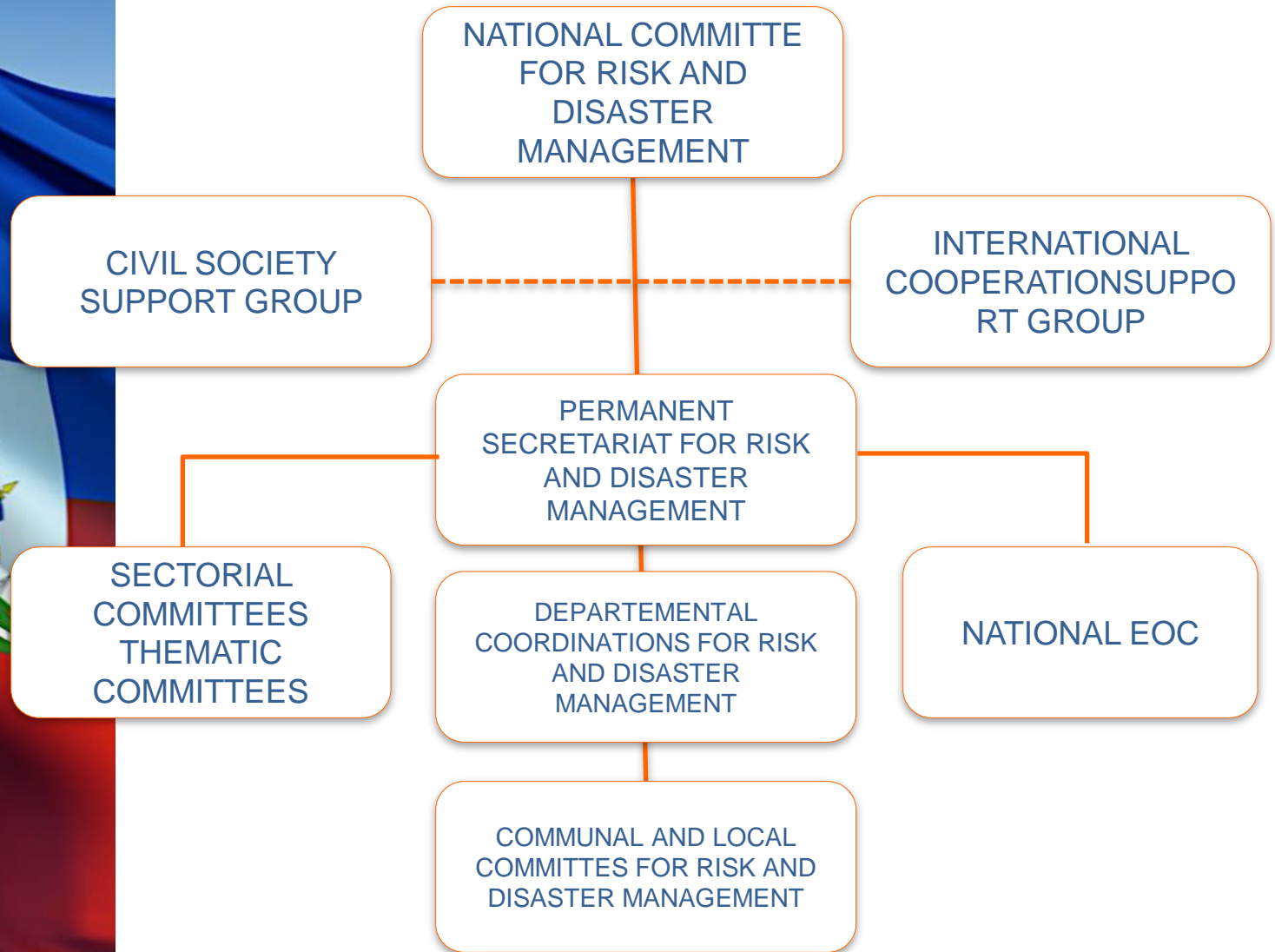
Comprehensive Disaster Risk
Management (J1200654)
Haiti Job Report

SNGRD CHART

- Brief history of the SNGRD
- The SNGRD Chart



• SNGRD Chart





Ressources humaines pour la collectes de données



National staff

National EOC

10

Departmental committees / 10 departments

130

Communal committees / 140 communes

174

Local committee / 570 communal sections

3022

New trained research and rescue volunteers



Data collection and processing tools

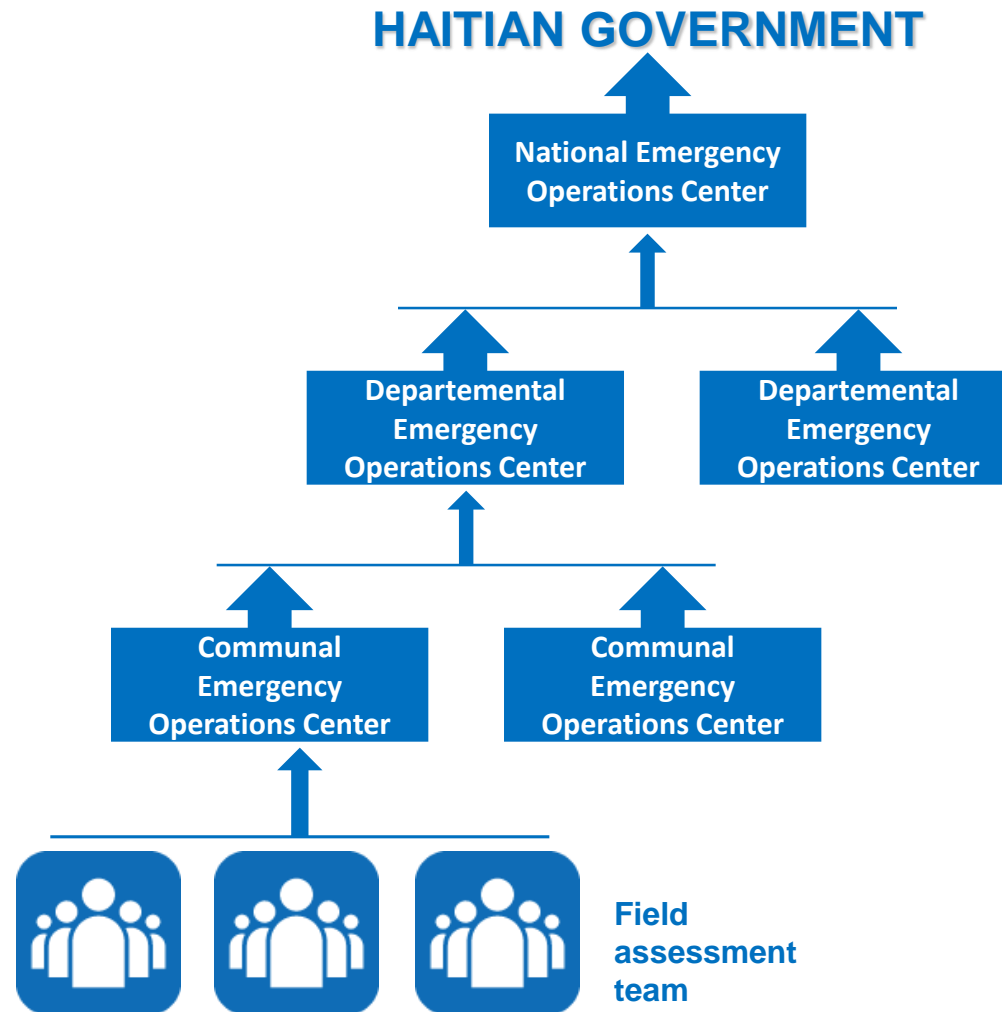
- **Tools** : Assessment forms are used in the field by trained team in **Damage Assessment and Needs Analysis (DANA)** ;
- **Stakeholders** : Civil Protection Directorate, Red Cross, Sectorial Ministries, UNDP, OCHA...





Data collection and processing process

The national and international partners are involved in all the process



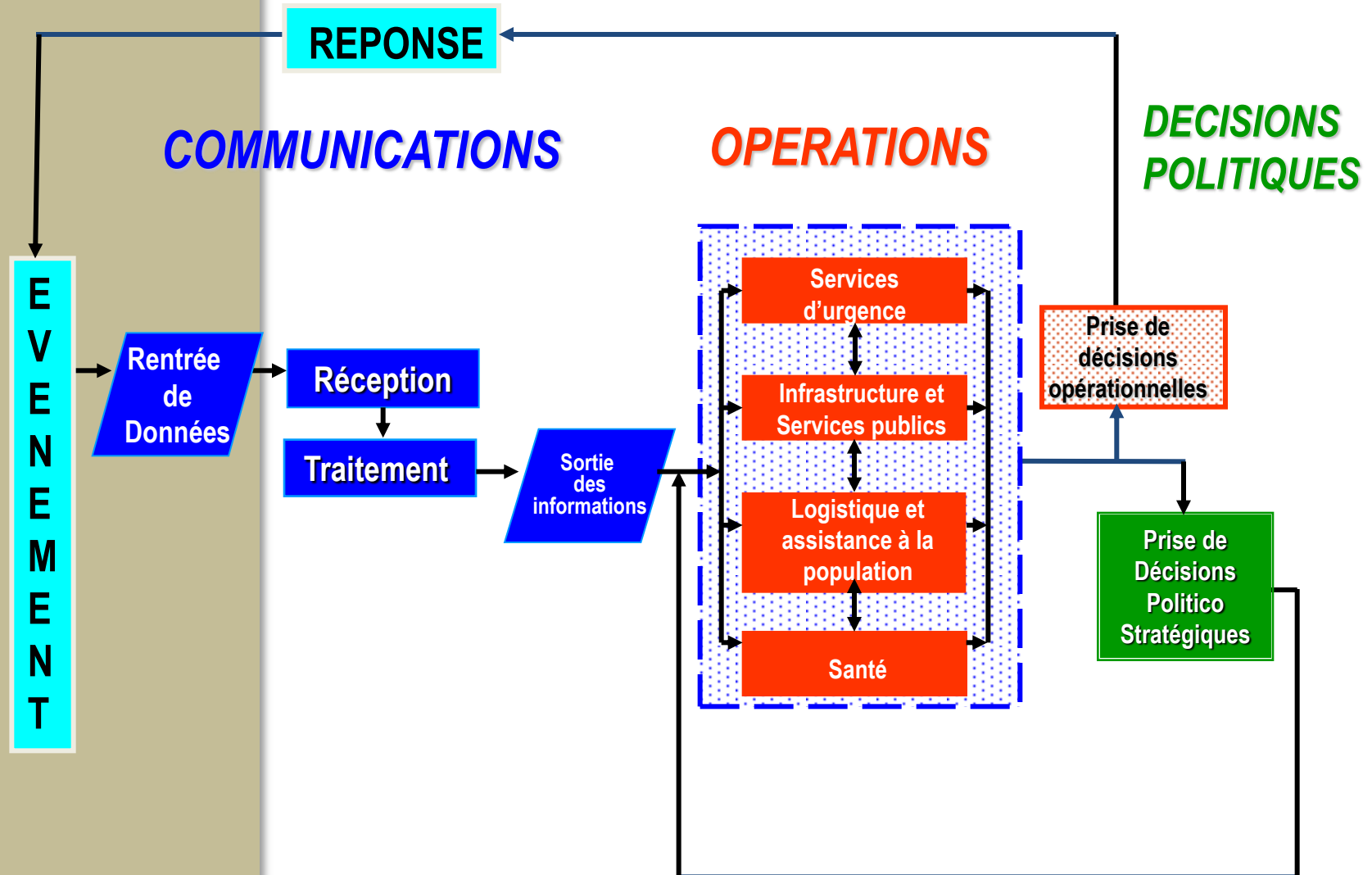
Logiciel et matériels utilisés

- **Windows 7, Excel** (en ligne sur google et hors ligne) ;
- Fiches d'évaluation, téléphones portables et ordinateurs personnels





Importance of data collection and processing - chart





Challenges for data collection and processing

Appui d'OCHA et du PNUD dans ce domaine

- **Harmoniser** les outils de collecte de données;
- **Réduire le délai** du processus de collecte et de traitement de données ;
- **Améliorer la qualité et la fiabilité** des données collectées ;
- **Organiser l'archivage** systématique;
- **Bien définir les objectifs** pour la collecte des données;
- **Mettre à jour les lignes** de base après chaque événement.



Bonnes pratiques

- Utilisation systématique de la grille d'évaluation;
- Positionnement de la Direction de la protection civile comme source officielle d'information sur les catastrophes;
- Évaluation systématique de la gestion des urgences;
- Utilisation expérimentale d'un tableau de bord numérique sur google docs;



MERCI !!!!!