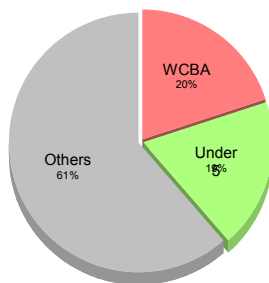


**Origin of refugees:**

DRC  
Rwanda  
Uganda

**Population:** 21,115



**Implementing partners:**

Health/HIV: AHA, STOP-SIDA, TPO  
Nutrition: AHA  
Watsan: COPED, AHA



**Public Health Status**

**Health Impact**

Crude Mortality Rate (CMR) (/1000/month) 0.26  
Under-five Mortality Rate (U5MR) (/1000/month) 0.69  
Infant Mortality Rate (IMR) (/1000 livebirths) 28.6  
Neonatal Mortality Rate (NNMR) (/1000 livebirths) 6.7

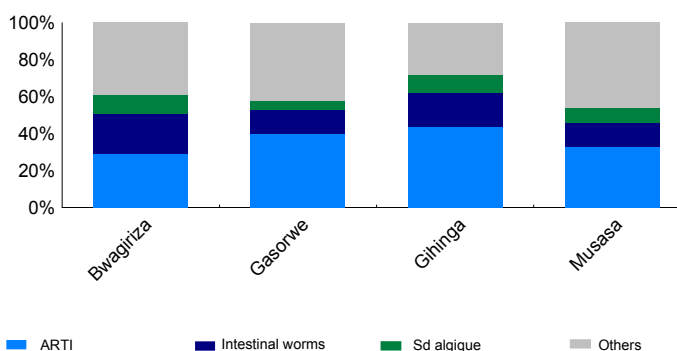
Indicator	Standard	Status
Crude Mortality Rate (CMR)	< 1.5	✓
Under-five Mortality Rate (U5MR)	< 3.0	✓
Infant Mortality Rate (IMR)	< 60	✓
Neonatal Mortality Rate (NNMR)	< 40	✓

**Human Resources**

No. of Medical Doctors 2  
No. of Clinical Consultants 16  
No. of Nurses (qualified) 16  
No. of MCH staff / Midwives 4  
No. of Community Health Workers (CHW) 30  
No. of Hygiene Promoters 30

Indicator	Standard	Status
No. of Medical Doctors	1 : <50,000	✓
No. of Clinical Consultants	1 : <10,000	✓
No. of Nurses (qualified)	1 : <10,000	✓
No. of MCH staff / Midwives	1 : <10,000	✓
No. of Community Health Workers (CHW)	1 : 500-1,000	✓
No. of Hygiene Promoters	1 : <500	⚠

Figure 1: Proportional Crude Morbidity



**Country Overview**

**A. Objectives**

- 1a.
- 2a.
- 3a.
- 4a.
- 5a.

**B. Progress**

To what extent was each objective achieved? (use indicators to give examples of achievements).

- 1b.
- 2b.
- 3b.
- 4b.
- 5b.

**C. Gaps & Planning**

What conditions / activities are needed next year in order to produce the expected results?

- 1c.
- 2c.
- 3c.
- 4c.
- 5c.

**Key observations**

What were the key activities carried out during the year? To what extent did the activities achieve expected results?

**Limitations/constraints**

What external factors and/or conditions outside your direct control affected implementation of Public Health Programmes planned activities?

**Public Health Programmes**

**Coordination**

Do monthly coordination meetings take place?

Indicator	Standard	Status
Yes	Yes	✓

**Access and Utilisation**

No. of health facilities 4  
No. of consultations per trained clinician per day 30  
Health Utilization Rate (new visits/person/year) 4.0  
Proportion of consultations by host population 9%

Indicator	Standard	Status
No. of health facilities	1 : <10,000	✓
No. of consultations per trained clinician per day	< 50	✓
Health Utilization Rate (new visits/person/year)	1 - 4	✓
Proportion of consultations by host population	9%	✓

**Malaria**

Is Act introduced as 1st line malaria treatment?

Indicator	Standard	Status
Yes	Yes	✓

Les principales activités menées au cours de l'année se rapportent aux soins curatifs, préventifs et promotionnels aussi bien dans les domaines de la santé générale, santé maternelle et infantile avec son volet santé de la reproduction, nutrition que du VIH/SIDA.

**Key observations**

What were the key activities carried out during the year? To what extent did the activities achieve expected results?

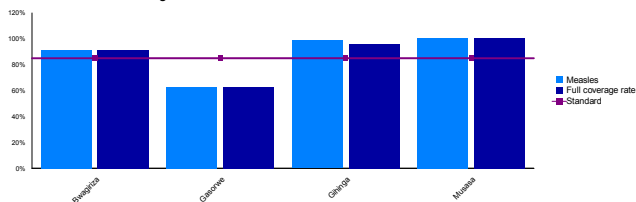
**Limitations/constraints**

What external factors and/or conditions outside your direct control affected implementation of Public Health Programmes planned activities?

**Public Health Programmes**

IMMUNISATION

Figure 2: Vaccination coverage



NUTRITION AND FOOD SECURITY

**Surveys & Assessments**

Indicator	Standard
Date of last nutrition survey	Sep 2008
Date of last last JAM	Oct 2008

**Malnutrition**

Indicator	Standard	Status
Global Acute Malnutrition Rate (%)	< 5%	✓
Severe Acute Malnutrition Rate (%)	< 2%	✓
Prevalence of anaemia in children under five	< 20%	ⓘ
Prevalence of anaemia in women of reproductive age	< 20%	ⓘ
Average number of kilocalories per person per day	2100	✓

**Food Security**

Indicator	Standard	Status
Does UNHCR provide complementary food?	Yes	✓
Did the content of the GFR change during the year?	Yes	✓
Did WFP report any pipeline breaks during the year?	No	✓
Have PoC been included in the National FS Plan?	Yes	ⓘ
Prop. of ration sold by refugees to buy other food items	< 30%	ⓘ

REPRO HEALTH

**Maternal and Newborn Health**

Indicator	Standard	Status
Coverage of complete antenatal care (4 or more visits)	45%	100% ✗
Proportion of deliveries attended by skilled personnel	100%	≥ 50% ✓
Proportion of deliveries performed by caesarean section	6%	5 - 15% ✓
Proportion of low birth weight deliveries	4%	< 15% ✓

**Family planning**

Indicator	Standard	Status
Contraceptive prevalence rate	2%	≥ 30% ✗

SGBV

**Sexual and Gender-based Violence**

Indicator	Standard	Status
Incidence of reported rape (/10,000/year)	0.66	
Prop. rape survivors who received PEP < 72h	0%	100% ✗
Prop. rape survivors who received ECP < 120h	0%	100% ✗
Prop. rape survivors who received STI < 2 wks	0%	100% ✗

Les principales activités de santé de la reproduction menées au cours de l'année se résument comme suit: consultation prénatale, accouchement, consultation post natale, palning familial, soins au nouveau-né et à la mère.

HIV/AIDS

**Monitoring & Evaluation**

Indicator	Standard	Status
Are PoCs included in national HIV strategic plans?	Yes	Yes
Are PoCs included in national HIV sent surveillance?	Yes	Yes
Date of last last KAPB/BSS		

**Prevention**

Indicator	Standard	Status
Condom distribution rate	1.20	> 0.5 ✓
Do appropriate IEC materials exist for PoCs?	Yes	Yes ✓
Are risk groups targeted with prevention programmes?	Yes	Yes ✓
Proportion of blood units screened for HIV		100% ⓘ
PMTCT coverage	54%	100% ✗

**Care and Treatment**

Indicator	Standard	Status
Do PoCs have equal access to ART as host?	Yes	Yes ✓
Number of PoCs receiving ART	52	
Prop. HIV positive mothers receiving co-trimox	100%	100% ✓
Prop. HIV positive infants receiving co-trimox	100%	100% ✓

WASH

**Water, Sanitation and Hygiene**

Indicator	Standard	Status
Av quantity of potable water / person / day (litres)	25	> 20 ✓
No. of persons per usable water tap	68	< 80 ✓
No. of persons per drop-hole in communal latrine	17	≤ 20 ✓
Prop. of population living within 200m from water point	100%	100% ✓
Prop. of families with latrines	25%	100% ✓
Prop. families receiving >250g soap / person / month	100%	≥ 90% ✗
Prop. camps with 1 hygiene promoter / 500 persons	%	≥ 75% ⓘ

**Camp opened:** 2009  
**Camp closed:**  
**HIS start date:** Jul 2009

**Population:** 2,715  
 The source of population data in this report is:



### Origin of refugees:

DRC  
Rwanda

### Implementing partners:

Health/HIV: AHA, STOP-SIDA, TPO  
 Nutrition: AHA  
 Watsan: COPED, AHA

## Public Health Status

### Health Impact

Indicator	Standard	Status
Crude Mortality Rate (CMR) (/1000/month)	0.62	< 1.5
Under-five Mortality Rate (U5MR) (/1000/month)	1.41	< 3.0
Infant Mortality Rate (IMR) (/1000 livebirths)	107.1	< 60
Neonatal Mortality Rate (NNMR) (/1000 livebirths)	0.0	< 40

Figure 1: Crude and Under-five Mortality

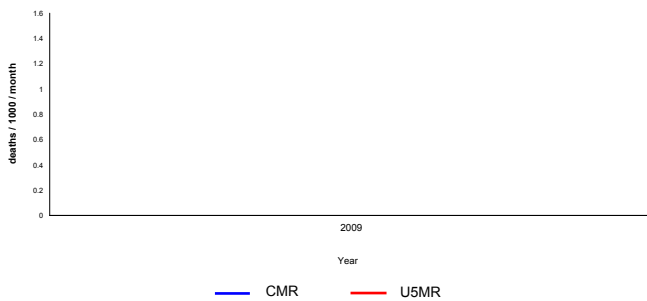


Figure 2: Crude Morbidity

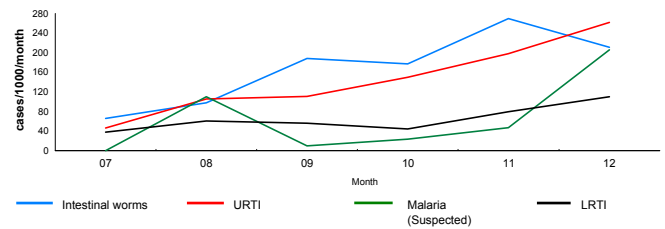
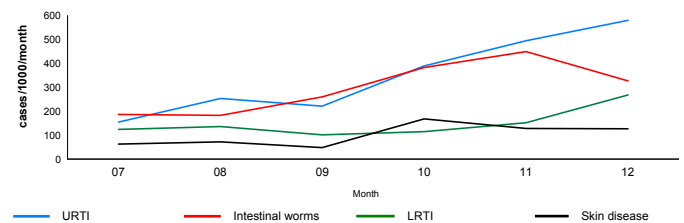


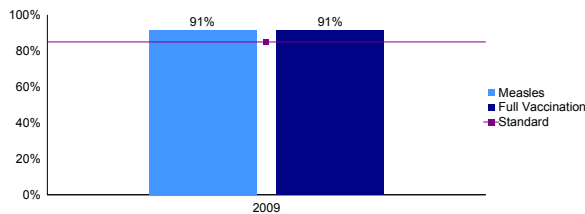
Figure 3: Under-five Morbidity



## Public Health Programmes

Indicator	Standard	Status
<b>Human Resources</b>		
No. of Medical Doctors	1 : 0	1 : <50,000
No. of Clinical Consultants	3	1 : <10,000
No. of Nurses (qualified)	2	1 : <10,000
No. of MCH staff / Midwives	1	1 : <10,000
No. of Community Health Workers (CHW)	5	1 : 500-1,000
No. of Hygiene Promoters	5	1 : <500
<b>Access and Utilisation</b>		
No. of health facilities	1	1 : <10,000
No. of consultations per trained clinician per day	18	< 50
Health Utilization Rate (new visits/person/year)	9.0	1 - 4
Proportion of consultations by host population	5.63%	
<b>Malaria</b>		
Is Act introduced as 1st line malaria treatment?	Yes	Yes

Figure 4: Vaccination coverage



### Malnutrition

Indicator	Standard	Status
Global Acute Malnutrition Rate (%)	< 5%	
Severe Acute Malnutrition Rate (%)	< 2%	
Prevalence of anaemia in children under five	< 20%	
Prevalence of anaemia in women of reproductive age	< 20%	
Average number of kilocalories per person per day	2100	2100

Indicator	Standard	Status
<b>Maternal and Newborn Health</b>		
Coverage of complete antenatal care (4 or more visits)	63%	100%
Proportion of deliveries attended by skilled personnel	107%	≥ 50%
Proportion of deliveries performed by caesarean section	10%	5 - 15%
Proportion of low birth weight deliveries	0%	< 15%
<b>Family planning</b>		
Contraceptive prevalence rate		≥ 30%
<b>Sexual and Gender-based Violence</b>		
Incidence of reported rape (/10,000/year)	0.00	
Prop. rape survivors who received PEP < 72h		100%
Prop. rape survivors who received ECP < 120h		100%
Prop. rape survivors who received STI < 2 wks		100%

Indicator	Standard	Status
<b>Prevention</b>		
Condom distribution rate	0.87	> 0.5
Do appropriate IEC materials exist for PoCs?	Yes	Yes
Are risk groups targeted with prevention programmes?	Yes	Yes
Proportion of donated blood units screened for HIV		100%
PMTCT coverage	90%	100%
<b>Care and Treatment</b>		
Do PoCs have equal access to ART as host?	Yes	Yes
Number of PoCs receiving ART	5	
Prop. HIV positive mothers receiving co-trimox	0%	100%
Prop. HIV positive infants receiving co-trimox	0%	100%

Indicator	Standard	Status
<b>Water, Sanitation and Hygiene</b>		
Av quantity of potable water / person / day (litres)	34	> 20
No. of persons per usable water tap	50	< 80
No. of persons per drop-hole in communal latrine	0	≤ 20
Prop. of population living within 200m from water point	100%	100%
Prop. of families with latrines	100%	100%
Prop. families receiving >250g soap / person / month	100%	≥ 90%

## Observations

**Camp opened:** 2002  
**Camp closed:**  
**HIS start date:** May 2008

**Population:** 9,335  
 The source of population data in this report is:



### Origin of refugees:

DRC  
 Rwanda  
 Uganda

### Implementing partners:

Health/HIV: AHA, STOP-SIDA, TPO  
 Nutrition: AHA  
 Watsan: AHA, CNR, GTZ

## Public Health Status

### Health Impact

Indicator	Standard	Status
Crude Mortality Rate (CMR) (/1000/month)	0.27	< 1.5
Under-five Mortality Rate (U5MR) (/1000/month)	0.58	< 3.0
Infant Mortality Rate (IMR) (/1000 livebirths)	25.4	< 60
Neonatal Mortality Rate (NNMR) (/1000 livebirths)	6.3	< 40

Figure 1: Crude and Under-five Mortality

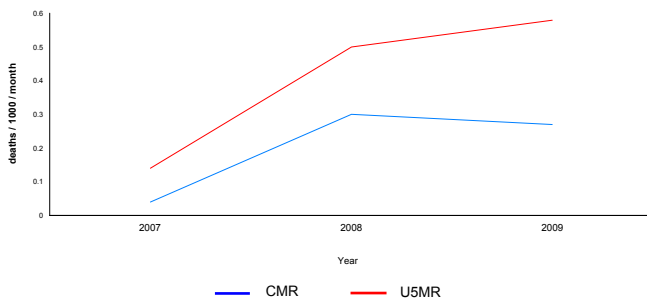


Figure 2: Crude Morbidity

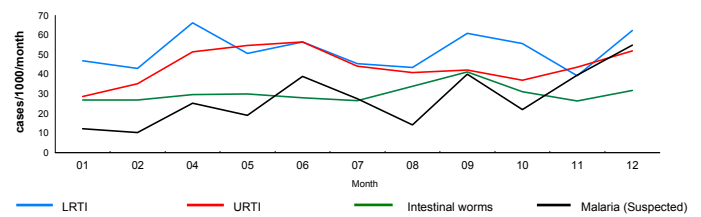
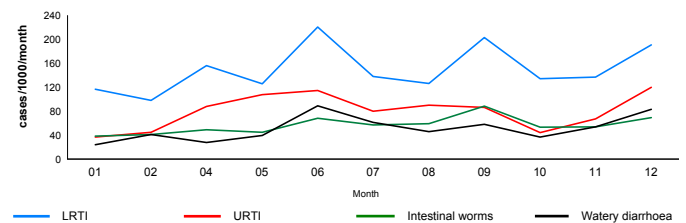


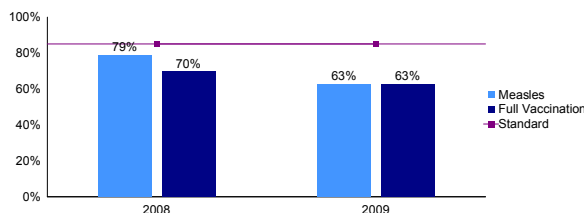
Figure 3: Under-five Morbidity



## Public Health Programmes

Indicator	No	Indicator	Standard	Status
<b>Human Resources</b>				
No. of Medical Doctors	1	1 : 9,335	1 : <50,000	✓
No. of Clinical Consultants	5	1 : 1,867	1 : <10,000	✓
No. of Nurses (qualified)	5	1 : 1,867	1 : <10,000	✓
No. of MCH staff / Midwives	1	1 : 9,335	1 : <10,000	✓
No. of Community Health Workers (CHW)	10	1 : 934	1 : 500-1,000	✓
No. of Hygiene Promoters	10	1 : 934	1 : <500	✗
<b>Access and Utilisation</b>				
No. of health facilities	1	1 : 9,335	1 : <10,000	✓
No. of consultations per trained clinician per day		41	< 50	✓
Health Utilization Rate (new visits/person/year)		3.0	1 - 4	✓
Proportion of consultations by host population		10.05%		✓
<b>Malaria</b>				
Is Act introduced as 1st line malaria treatment?		Yes	Yes	✓

Figure 4: Vaccination coverage



### Malnutrition

Indicator	Value	Standard	Status
Global Acute Malnutrition Rate (%)	3.6%	< 5%	✓
Severe Acute Malnutrition Rate (%)	0.0%	< 2%	✓
Prevalence of anaemia in children under five		< 20%	ⓘ
Prevalence of anaemia in women of reproductive age		< 20%	ⓘ
Average number of kilocalories per person per day	2100	2100	✓

Indicator	Standard	Status
<b>Maternal and Newborn Health</b>		
Coverage of complete antenatal care (4 or more visits)	28%	100%
Proportion of deliveries attended by skilled personnel	100%	≥ 50%
Proportion of deliveries performed by caesarean section	6%	5 - 15%
Proportion of low birth weight deliveries	4%	< 15%
<b>Family planning</b>		
Contraceptive prevalence rate	0%	≥ 30%
<b>Sexual and Gender-based Violence</b>		
Incidence of reported rape (/10,000/year)	1.26	
Prop. rape survivors who received PEP < 72h	0%	100%
Prop. rape survivors who received ECP < 120h	0%	100%
Prop. rape survivors who received STI < 2 wks	0%	100%

Indicator	Standard	Status
<b>Prevention</b>		
Condom distribution rate	1.52	> 0.5
Do appropriate IEC materials exist for PoCs?	Yes	Yes
Are risk groups targeted with prevention programmes?	Yes	Yes
Proportion of donated blood units screened for HIV		100%
PMTCT coverage	68%	100%
<b>Care and Treatment</b>		
Do PoCs have equal access to ART as host?	Yes	Yes
Number of PoCs receiving ART	32	
Prop. HIV positive mothers receiving co-trimox	0%	100%
Prop. HIV positive infants receiving co-trimox	0%	100%

Indicator	Standard	Status
<b>Water, Sanitation and Hygiene</b>		
Av quantity of potable water / person / day (litres)	18	> 20
No. of persons per usable water tap	80	< 80
No. of persons per drop-hole in communal latrine	22	≤ 20
Prop. of population living within 200m from water point	100%	100%
Prop. of families with latrines	0%	100%
Prop. families receiving >250g soap / person / month	100%	≥ 90%

## Observations

**Camp opened:** 2004

**Population:** 2,520

**Camp closed:**

The source of population data in this report is:

**HIS start date:** May 2008

#### Origin of refugees:

DRC

#### Implementing partners:

Health/HIV: AHA, STOP-SIDA, TPO

Nutrition: AHA

Watsan: AHA



### Public Health Status

#### Health Impact

Indicator	Standard	Status
Crude Mortality Rate (CMR) (/1000/month)	0.24	< 1.5
Under-five Mortality Rate (U5MR) (/1000/month)	0.65	< 3.0
Infant Mortality Rate (IMR) (/1000 livebirths)	29.9	< 60
Neonatal Mortality Rate (NNMR) (/1000 livebirths)	14.9	< 40

Figure 1: Crude and Under-five Mortality

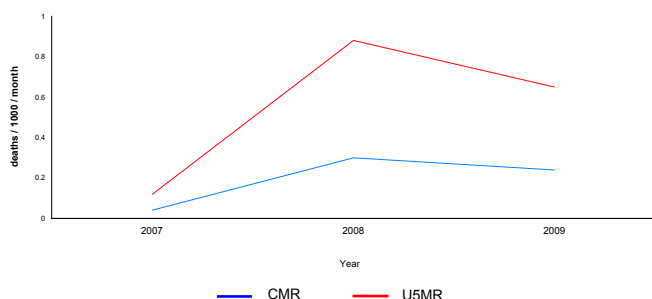


Figure 2: Crude Morbidity

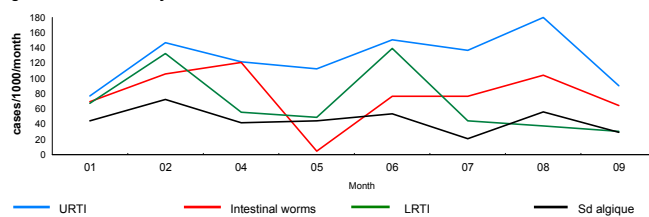
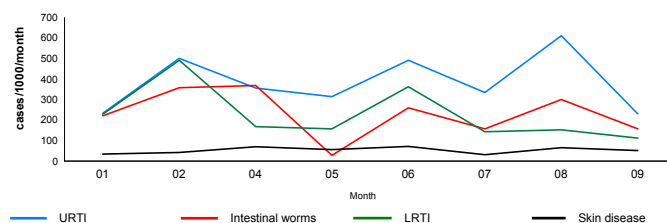


Figure 3: Under-five Morbidity



### Public Health Programmes

#### Human Resources

No.	Indicator	Standard	Status
0	1 : 0	1 : <50,000	✓
3	1 : 840	1 : <10,000	✓
4	1 : 630	1 : <10,000	✓
1	1 : 2,520	1 : <10,000	✓
5	1 : 504	1 : 500-1,000	✓
5	1 : 504	1 : <500	⚠

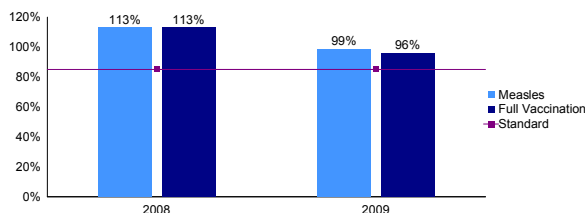
#### Access and Utilisation

No.	Indicator	Standard	Status
1	1 : 2,520	1 : <10,000	✓
17	< 50	< 50	✓
5.0	1 - 4	1 - 4	⚠
7.78%			⚠

#### Malaria

Is Act introduced as 1st line malaria treatment?	Yes	✗
--	-----	---

Figure 4: Vaccination coverage



#### Malnutrition

Indicator	Standard	Status
Global Acute Malnutrition Rate (%)	< 5%	✓
Severe Acute Malnutrition Rate (%)	< 2%	✓
Prevalence of anaemia in children under five	< 20%	ⓘ
Prevalence of anaemia in women of reproductive age	< 20%	ⓘ
Average number of kilocalories per person per day	2100	✓

#### REPRO HEALTH

#### Maternal and Newborn Health

Indicator	Standard	Status
Coverage of complete antenatal care (4 or more visits)	100%	✗
Proportion of deliveries attended by skilled personnel	≥ 50%	✓
Proportion of deliveries performed by caesarean section	5 - 15%	✓
Proportion of low birth weight deliveries	< 15%	✓

#### Family planning

Contraceptive prevalence rate	≥ 30%	✗
-------------------------------	-------	---

#### Sexual and Gender-based Violence

Indicator	Standard	Status
Incidence of reported rape (/10,000/year)	0.00	ⓘ
Prop. rape survivors who received PEP < 72h	100%	ⓘ
Prop. rape survivors who received ECP < 120h	100%	ⓘ
Prop. rape survivors who received STI < 2 wks	100%	ⓘ

#### Prevention

Indicator	Standard	Status
Condom distribution rate	> 0.5	✓
Do appropriate IEC materials exist for PoCs?	Yes	✓
Are risk groups targeted with prevention programmes?	Yes	✓
Proportion of donated blood units screened for HIV	100%	ⓘ
PMTCT coverage	100%	✗

#### Care and Treatment

Indicator	Standard	Status
Do PoCs have equal access to ART as host?	Yes	✓
Number of PoCs receiving ART	1	ⓘ
Prop. HIV positive mothers receiving co-trimox	100%	ⓘ
Prop. HIV positive infants receiving co-trimox	100%	ⓘ

#### Water, Sanitation and Hygiene

Indicator	Standard	Status
Av quantity of potable water / person / day (litres)	> 20	✓
No. of persons per usable water tap	< 80	✓
No. of persons per drop-hole in communal latrine	≤ 20	✓
Prop. of population living within 200m from water point	100%	✓
Prop. of families with latrines	100%	✗
Prop. families receiving >250g soap / person / month	≥ 90%	✓

### Observations

Camp opened: 2007

Population: 6,545

Camp closed:

The source of population data in this report is:

HIS start date: May 2008

#### Origin of refugees:

DRC  
Rwanda

#### Implementing partners:

Health/HIV: AHA, STOP-SIDA, TPO  
Nutrition: AHA  
Watsan: AHA



### Public Health Status

#### Health Impact

Indicator	Standard	Status
Crude Mortality Rate (CMR) (/1000/month)	0.20	< 1.5
Under-five Mortality Rate (U5MR) (/1000/month)	0.78	< 3.0
Infant Mortality Rate (IMR) (/1000 livebirths)	21.7	< 60
Neonatal Mortality Rate (NNMR) (/1000 livebirths)	5.4	< 40

Figure 1: Crude and Under-five Mortality

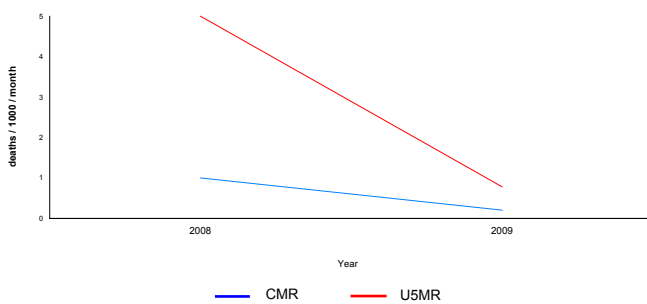


Figure 2: Crude Morbidity

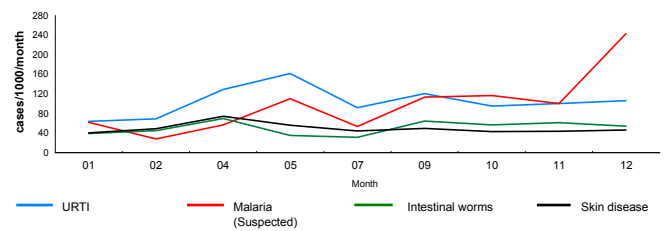
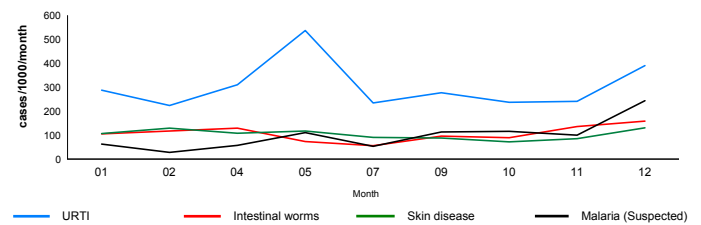


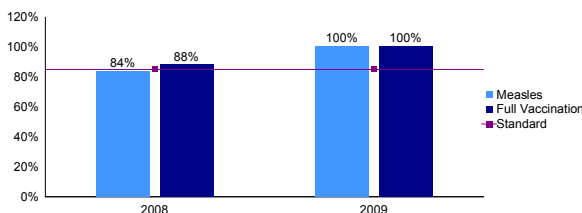
Figure 3: Under-five Morbidity



### Public Health Programmes

Indicator	No.	Indicator	Standard	Status
<b>Human Resources</b>				
No. of Medical Doctors	1	1 : 6,545	1 : <50,000	✓
No. of Clinical Consultants	5	1 : 1,309	1 : <10,000	✓
No. of Nurses (qualified)	5	1 : 1,309	1 : <10,000	✓
No. of MCH staff / Midwives	1	1 : 6,545	1 : <10,000	✓
No. of Community Health Workers (CHW)	10	1 : 654	1 : 500-1,000	✓
No. of Hygiene Promoters	10	1 : 654	1 : <500	⚠
<b>Access and Utilisation</b>				
No. of health facilities	1	1 : 6,545	1 : <10,000	✓
No. of consultations per trained clinician per day		40	< 50	✓
Health Utilization Rate (new visits/person/year)		4.0	1 - 4	⚠
Proportion of consultations by host population		9.59%		
<b>Malaria</b>				
Is Act introduced as 1st line malaria treatment?		Yes	Yes	✓

Figure 4: Vaccination coverage



#### Malnutrition

Indicator	Value	Standard	Status
Global Acute Malnutrition Rate (%)	8.9%	< 5%	✗
Severe Acute Malnutrition Rate (%)	1.2%	< 2%	✓
Prevalence of anaemia in children under five		< 20%	ⓘ
Prevalence of anaemia in women of reproductive age		< 20%	ⓘ
Average number of kilocalories per person per day	2100	2100	✓

Indicator	Standard	Status
<b>Maternal and Newborn Health</b>		
Coverage of complete antenatal care (4 or more visits)	81%	100%
Proportion of deliveries attended by skilled personnel	99%	≥ 50%
Proportion of deliveries performed by caesarean section	5%	5 - 15%
Proportion of low birth weight deliveries	3%	< 15%
<b>Family planning</b>		
Contraceptive prevalence rate	1%	≥ 30%
<b>Sexual and Gender-based Violence</b>		
Incidence of reported rape (/10,000/year)	0.00	
Prop. rape survivors who received PEP < 72h		100%
Prop. rape survivors who received ECP < 120h		100%
Prop. rape survivors who received STI < 2 wks		100%

Indicator	Standard	Status
<b>Prevention</b>		
Condom distribution rate	0.63	> 0.5
Do appropriate IEC materials exist for PoCs?	Yes	Yes
Are risk groups targeted with prevention programmes?	Yes	Yes
Proportion of donated blood units screened for HIV		100%
PMTCT coverage	30%	100%
<b>Care and Treatment</b>		
Do PoCs have equal access to ART as host?	Yes	Yes
Number of PoCs receiving ART	14	
Prop. HIV positive mothers receiving co-trimox		100%
Prop. HIV positive infants receiving co-trimox		100%

Indicator	Standard	Status
<b>Water, Sanitation and Hygiene</b>		
Av quantity of potable water / person / day (litres)	20	> 20
No. of persons per usable water tap	81	< 80
No. of persons per drop-hole in communal latrine	30	≤ 20
Prop. of population living within 200m from water point	100%	100%
Prop. of families with latrines	0%	100%
Prop. families receiving >250g soap / person / month	100%	≥ 90%

### Observations