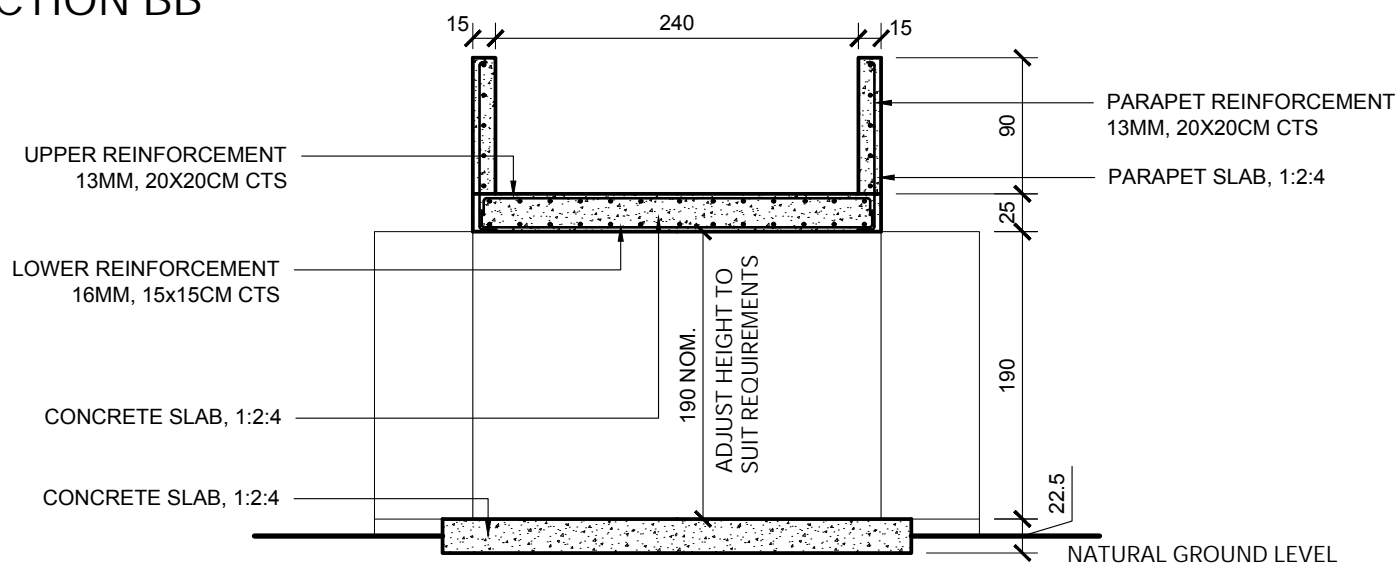


LONG  
SECTION BB



- NOTES
1. Refer to Specification for material descriptions.
  2. Structural design to be verified by local engineer for compliance with local conditions and norms
  3. Ensure the correct water content of mixed concrete - slump test should yield < 1/4 height reduction.
  4. Slabs to be cast in a single pour. All concrete works to be vibrated or well rodded.
  5. Ensure all poured concrete is kept damp and out of direct sunlight for at least 7 days while curing.
  6. Span and height dimensions nominal - adjust to suit site conditions and requirements.

DWG NO. E2-2

TITLE Culvert - Stone Masonry Long Section

PROJECT Community Infrastructure Catalogue

DRAWN BY AU

CHECKED BY RN

SCALE 1:50

UNITS CM

SHEET 2 of 2

DATE 31.08.2023



**UNHCR**  
The UN Refugee Agency

Technical Support Section  
Community Infrastructure Catalogue