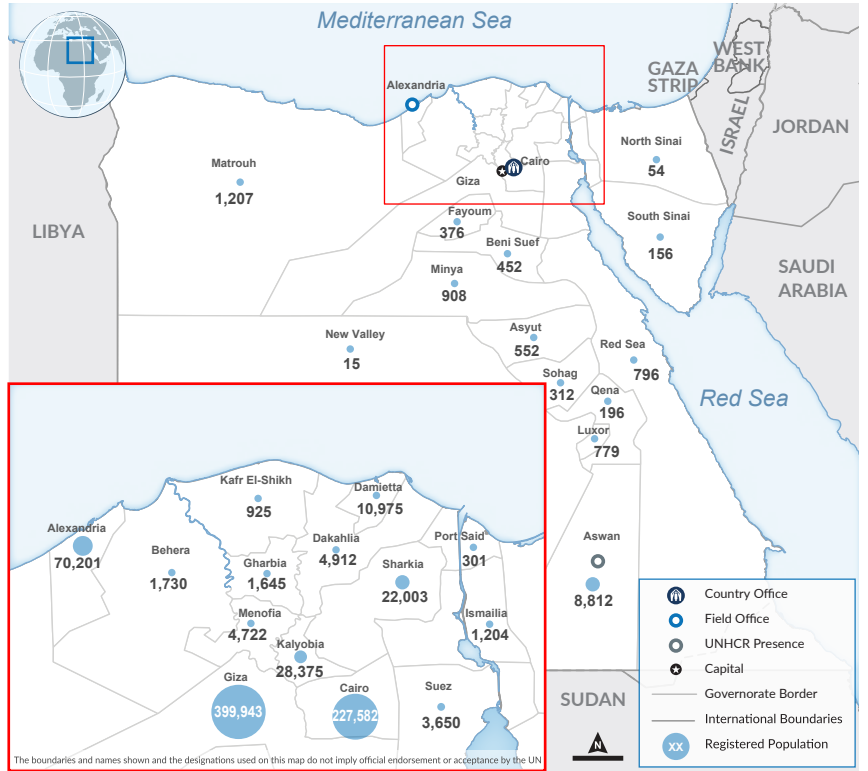
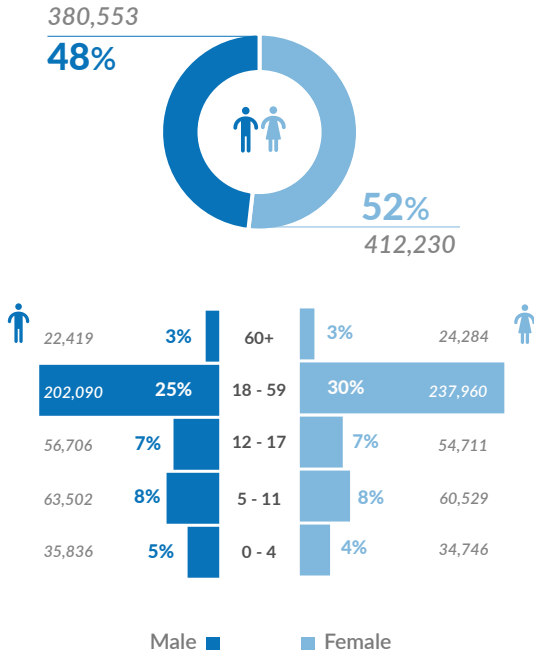
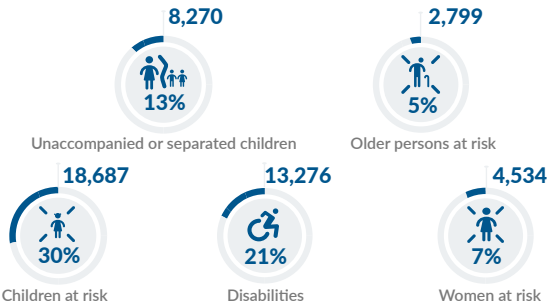




**Age & gender of registered population**



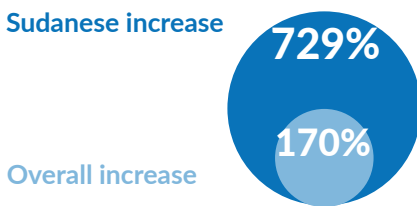
**Persons with specific needs\***



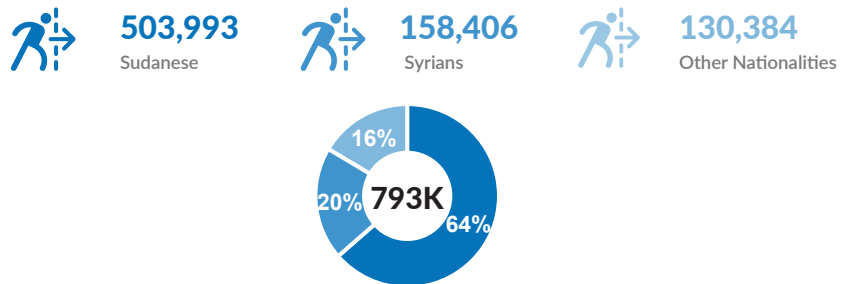
\*Individuals who may face particular vulnerabilities and barriers to access services and protection, due to factors such as age, disability, health conditions, or other vulnerabilities. For more information please click on the link [here](#)

**Population growth**

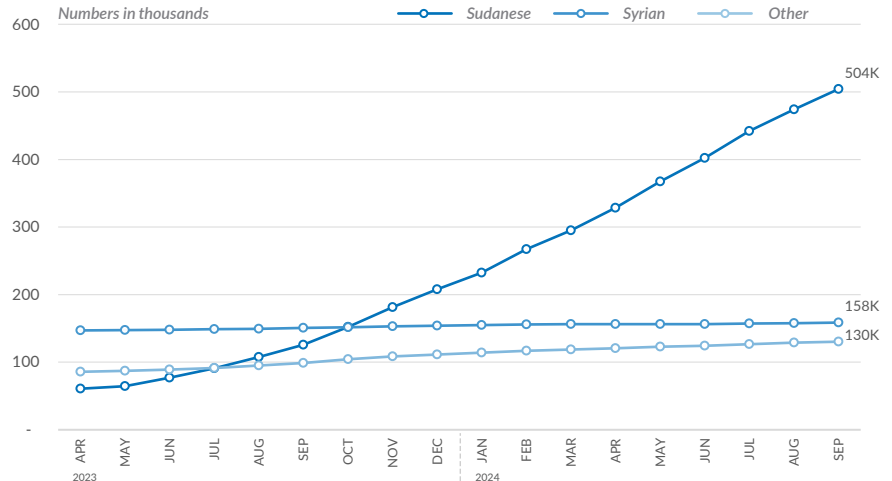
Percentage growth in Sudanese refugee numbers versus all nationalities between 31 March 2023 (pre Sudan crisis) and 30 September 2024.



**Population by nationality**



**Trend of population by nationality**



**UNHCR is grateful for the contributions from its donors**

