

ARCHITECTURE DRAWING LIST

DWG. NO.	DESCRIPTION	DWG. NO.	DESCRIPTION
ARC-001	(AS-BUILT) – BASEMENT FLOOR		
ARC-002	(DEMOLITION) – BASEMENT FLOOR		
ARC-003	(ADDITION) – BASEMENT FLOOR		
ARC-004	(FURNITURE) – BASEMENT FLOOR		
ARC-005	GROUND FLOOR CEILING PLAN		
ARC-006	FIRST FLOOR CEILING PLAN		
ARC-007	SECOND FLOOR CEILING PLAN		
ARC-008	THIRD FLOOR CEILING PLAN		
ARC-009	FOURTH FLOOR CEILING PLAN		

4			
3			
2			
1			
NO.	DATE	REVISIONS	SIGNATURE

CLIENT NAME:
UNHCR EGYPT

BUILDING NAME:
RSD /T BUILDING

DRAWING TITLE:
ARCHITECTURE DRAWING LIST

TEAM WORK:
REDA ABOUL-ELA

SCALE:
N.T.S

APPROVED BY:
MOHAMED ABD ALHADY

SHEET NO.: **1 8 3 0 A R C 0 0 0**

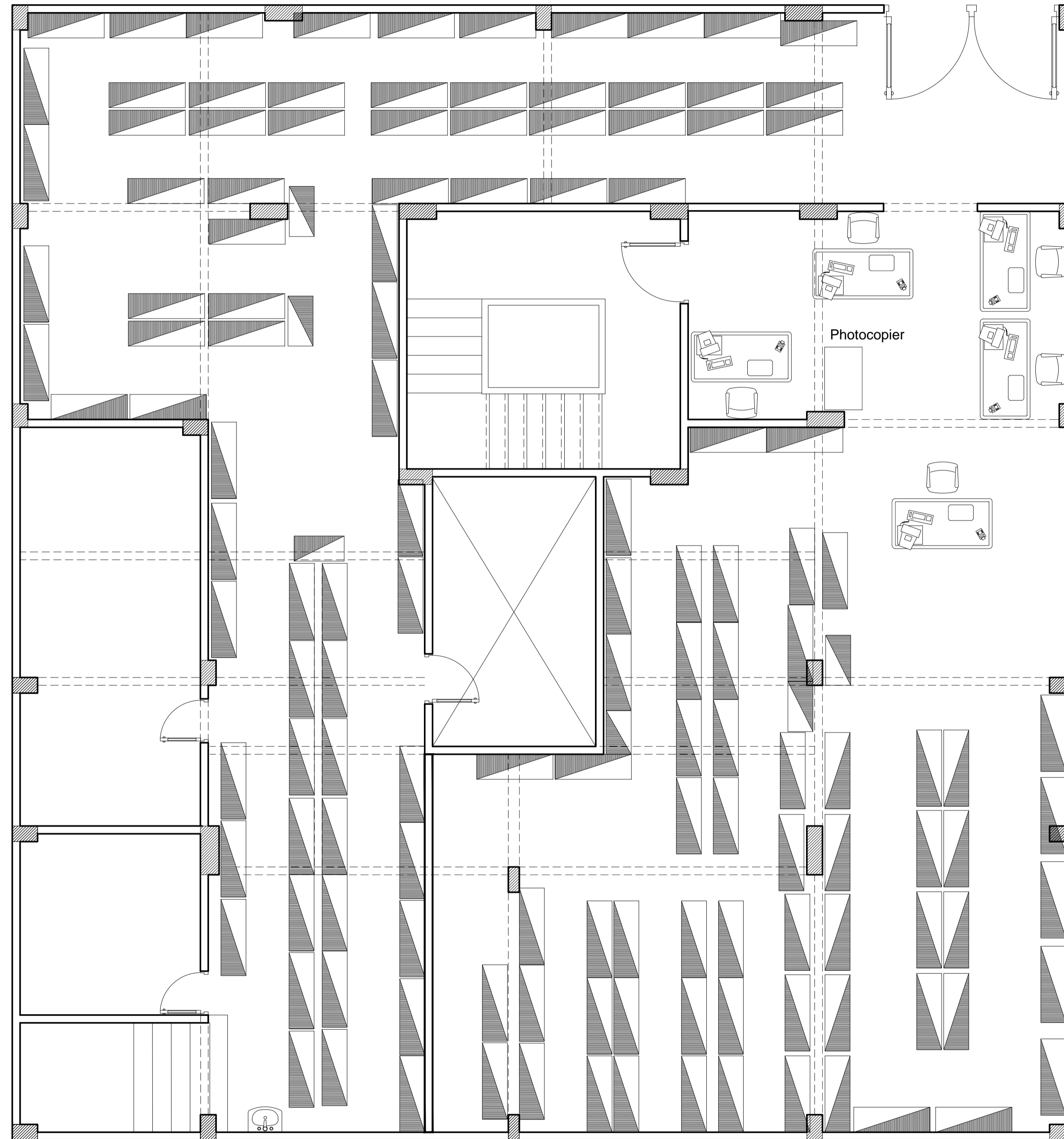
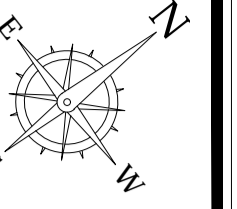
CHECKED BY:
MOHAMED ABD ALHADY

REVISION:
2

DATE:
11 December 2018

House of Experts
TARIK FATHY Ph.D
HISHAM FATHY Ph.D
ESSAM FATHY B.Sc

ARCHITECTS, PLANNERS AND CIVIL ENGINEERS, INC.
 *TEL:+2(02)37602490 - +2(01)223990622 THE@2-THE.COM WWW.2-THE.COM
 I22 Mohi El-Din Abu El-Ezz, El-Mohandseen, Cairo, Egypt.



4			
3			
2			
1			
NO.	DATE	REVISIONS	SIGNATURE

CLIENT NAME:
UNHCR EGYPT

BUILDING NAME:
RSD /T BUILDING

DRAWING TITLE:
**BASEMENT FLOOR PLAN
(AS-BUILT)**

TEAM WORK:
REDA ABOUL-ELA

SCALE:
1:50

APPROVED BY:
MOHAMED ABD ALHADY

SHEET NO.: **1 8 3 0 A R C 0 0 1**

CHECKED BY:
MOHAMED ABD ALHADY

REVISION:
2

DATE:
11 December 2018

House of Experts
TARIK FATHY Ph.D
HISHAM FATHY Ph.D
ESSAM FATHY B.Sc

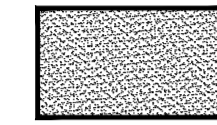
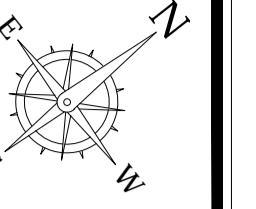
ARCHITECTS, PLANNERS AND CIVIL ENGINEERS, INC.
*TEL: +2(02)37602490 - +2(01)223990622 THE@2-THE.COM WWW.2-THE.COM
I22 Mohi El-Din Abu El-Ezz, El-Mohandseen, Cairo, Egypt.

UNHCR EGYPT RSD/T BLDG

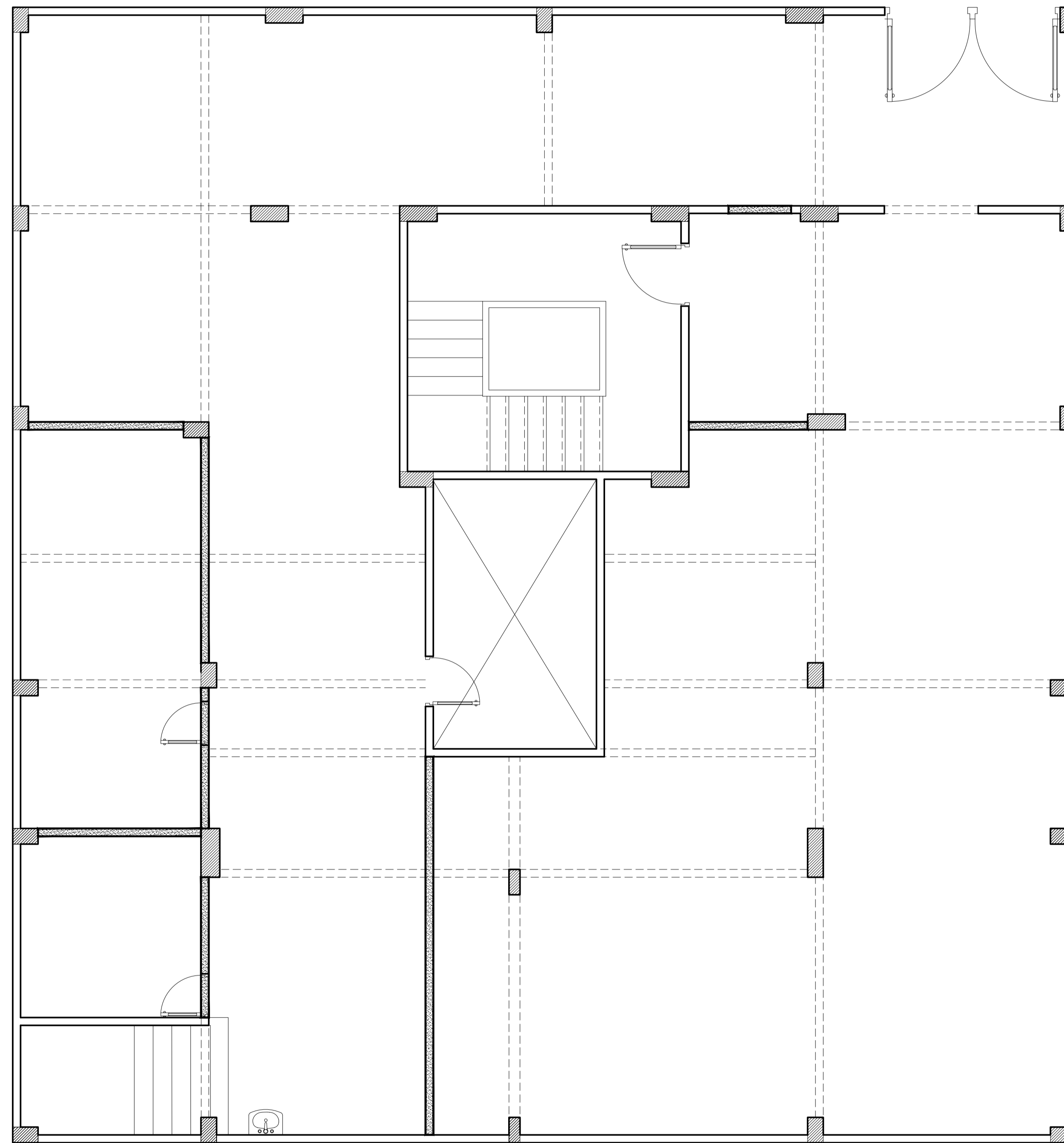
UNHCR EGYPT RSD/T BLDG

UNHCR EGYPT RSD/T BLDG

UNHCR EGYPT RSD/T BLDG



DEMOLITION Of Wall



4			
3			
2			
1			
NO.	DATE	REVISIONS	SIGNATURE

CLIENT NAME:
UNHCR EGYPT

BUILDING NAME:
RSD /T BUILDING

DRAWING TITLE:
**BASEMENT FLOOR PLAN
 (DEMOLITION)**

TEAM WORK:
 REDA ABOUL-ELA

SCALE:
 1:50

APPROVED BY:
 MOHAMED ABD ALHADY

SHEET NO.:
 1 8 3 0 A R C 0 0 2

CHECKED BY:
 MOHAMED ABD ALHADY

REVISION:
 2

DATE:
 11 December 2018

House of Experts
TARIK FATHY Ph.D
HISHAM FATHY Ph.D
ESSAM FATHY B.Sc

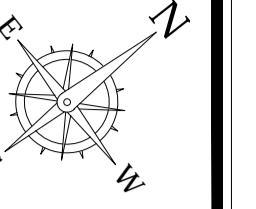
ARCHITECTS, PLANNERS AND CIVIL ENGINEERS, INC.
 *TEL: +2(02)37602490 - +2(01)223990622 THE@2-THE.COM WWW.2-THE.COM
 122 Mohi El-Din Abu El-Ezz, El-Mohandseen, Cairo, Egypt.

UNHCR EGYPT RSD/T BLDG

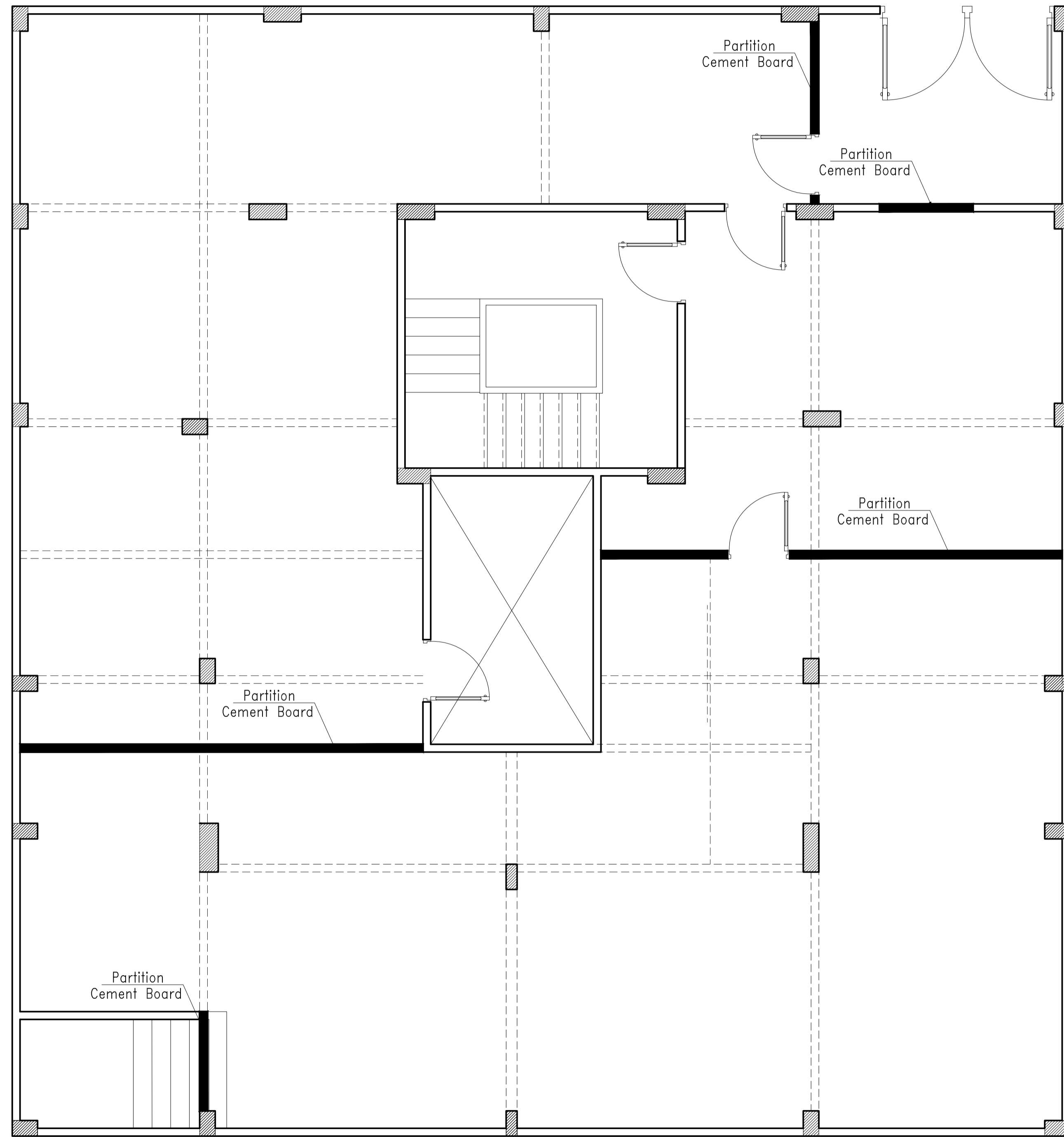
UNHCR EGYPT RSD/T BLDG

UNHCR EGYPT RSD/T BLDG

UNHCR EGYPT RSD/T BLDG



ADDITION Of Wall



4			
3			
2			
1			
NO.	DATE	REVISIONS	SIGNATURE

CLIENT NAME:
UNHCR EGYPT

BUILDING NAME:
RSD /T BUILDING

DRAWING TITLE:
**BASEMENT FLOOR PLAN
(ADDITION)**

TEAM WORK:
REDA ABOUL-ELA

SCALE:
1:50

APPROVED BY:
MOHAMED ABD ALHADY

SHEET NO.:
1 8 3 0 A R C 0 0 3

CHECKED BY:
MOHAMED ABD ALHADY

REVISION:
2

DATE:
11 December 2018

House of Experts
TARIK FATHY Ph.D
HISHAM FATHY Ph.D
ESSAM FATHY B.Sc

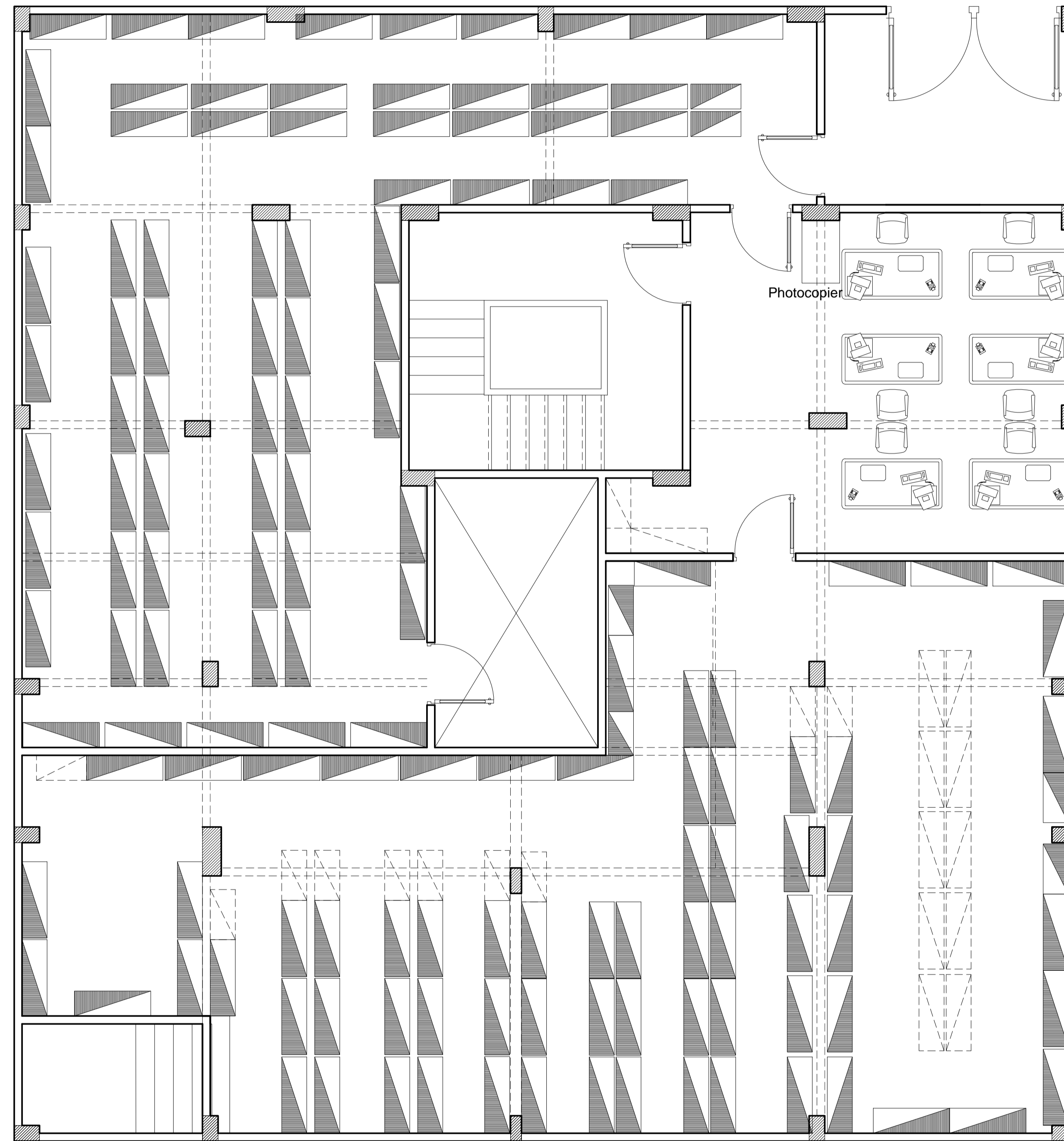
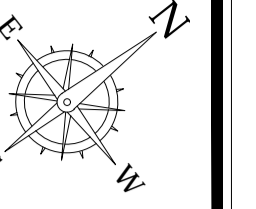
ARCHITECTS, PLANNERS AND CIVIL ENGINEERS, INC.
*TEL: +2(02)37602490 - +2(01)223990622 THE@2-THE.COM WWW.2-THE.COM
I22 Mohi El-Din Abu El-Ezz, El-Mohandseen, Cairo, Egypt.

UNHCR EGYPT RSD/T BLDG

UNHCR EGYPT RSD/T BLDG

UNHCR EGYPT RSD/T BLDG

UNHCR EGYPT RSD/T BLDG



4			
3			
2			
1			
NO.	DATE	REVISIONS	SIGNATURE

CLIENT NAME:
UNHCR EGYPT

BUILDING NAME:
RSD /T BUILDING

DRAWING TITLE:
**BASEMENT FLOOR PLAN
(FURNITURE)**

TEAM WORK:
REDA ABOUL-ELA

SCALE:
1:50

APPROVED BY:
MOHAMED ABD ALHADY

SHEET NO.:
1 8 3 0 A R C 0 0 4

CHECKED BY:
MOHAMED ABD ALHADY

REVISION:
2

DATE:
11 December 2018

House of Experts
TARIK FATHY Ph.D
HISHAM FATHY Ph.D
ESSAM FATHY B.Sc

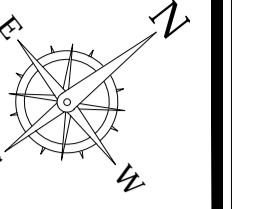
ARCHITECTS, PLANNERS AND CIVIL ENGINEERS, INC.
*TEL: +2(02)37602490 - +2(01)223990622 THE@2-THE.COM WWW.2-THE.COM
122 Mohi El-Din Abu El-Ezz, El-Mohandseen, Cairo, Egypt.

UNHCR EGYPT RSD/T BLDG

UNHCR EGYPT RSD/T BLDG

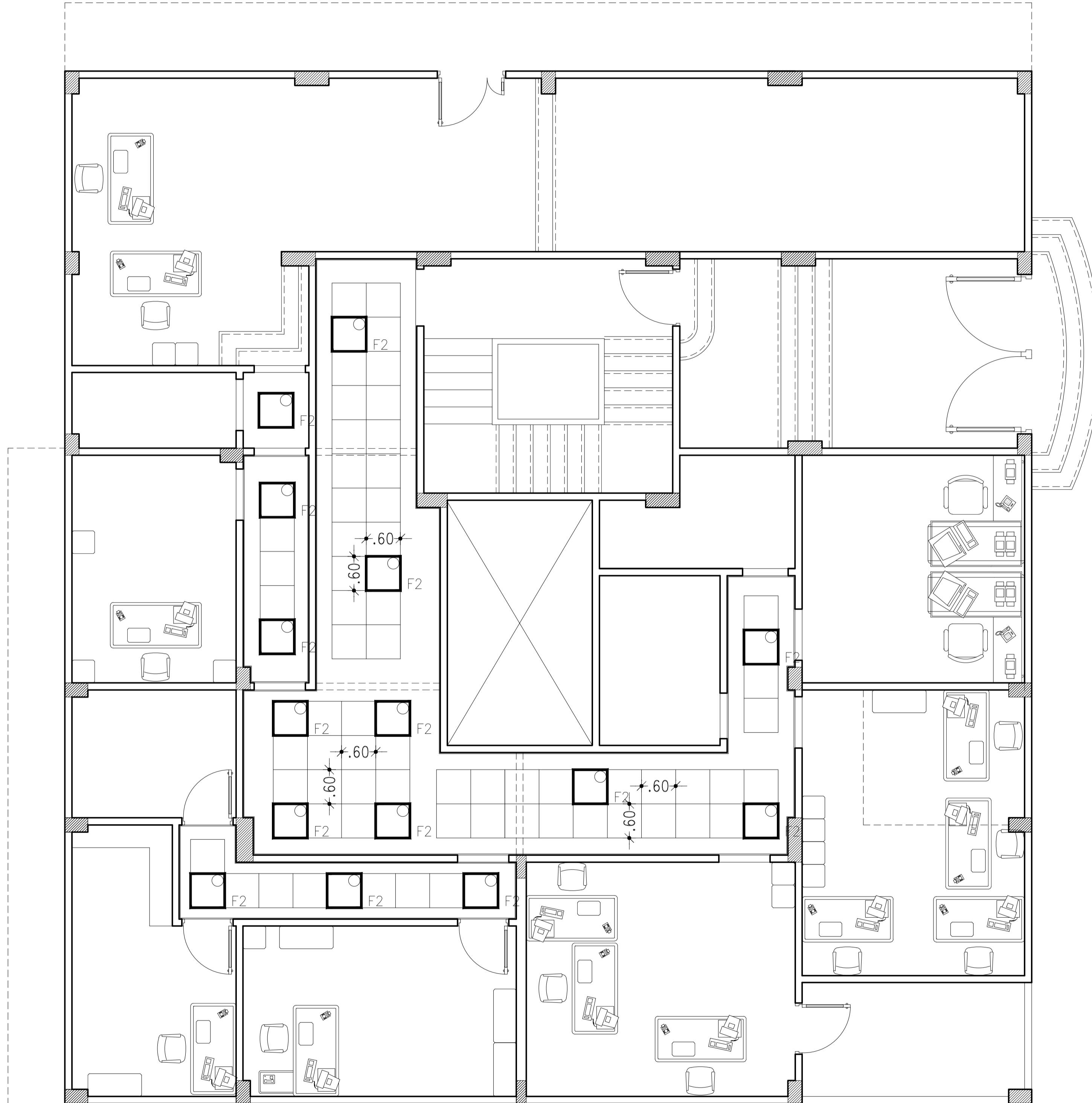
UNHCR EGYPT RSD/T BLDG

UNHCR EGYPT RSD/T BLDG



ACOUSTIC TILES 600X600mm

+2.40 THE LEVEL FROM F.F.L.



AB1	7408	EB1-F-BAP	F: A4GH8
-----	------	-----------	----------

67-SAGA4@8
HA; 6E'8: LCG

5H27-A: A4@8
EF7 "G'5H?7A:

7E4J-A: G4@8
GROUND FLOOR CEILING PLAN

TEAM WORK:
 REDA ABOUL-ELA

SCALE: 1:50
 APPROVED BY:
 MOHAMED ABD ALHADY

SHEET NO.: 1830 AR C 005
 CHECKED BY:
 MOHAMED ABD ALHADY

REVISION: 2
 DATE: 11 December 2018

House of Experts
 TARIK FATHY Ph.D
 HISHAM FATHY Ph.D
 ESSAM FATHY B.Sc

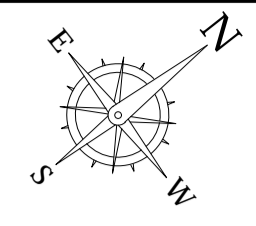
ARCHITECTS, PLANNERS AND CIVIL ENGINEERS, INC.
 TEL: +2(02)37602490 - +2(01)23990622 THE@2-THE.COM WWW.2-THE.COM
 122 Mohi El-Din Abu El-Ezz, El-Mohandseen, Cairo, Egypt.

HA; 6E'8: LCGEF7"G'5?7:

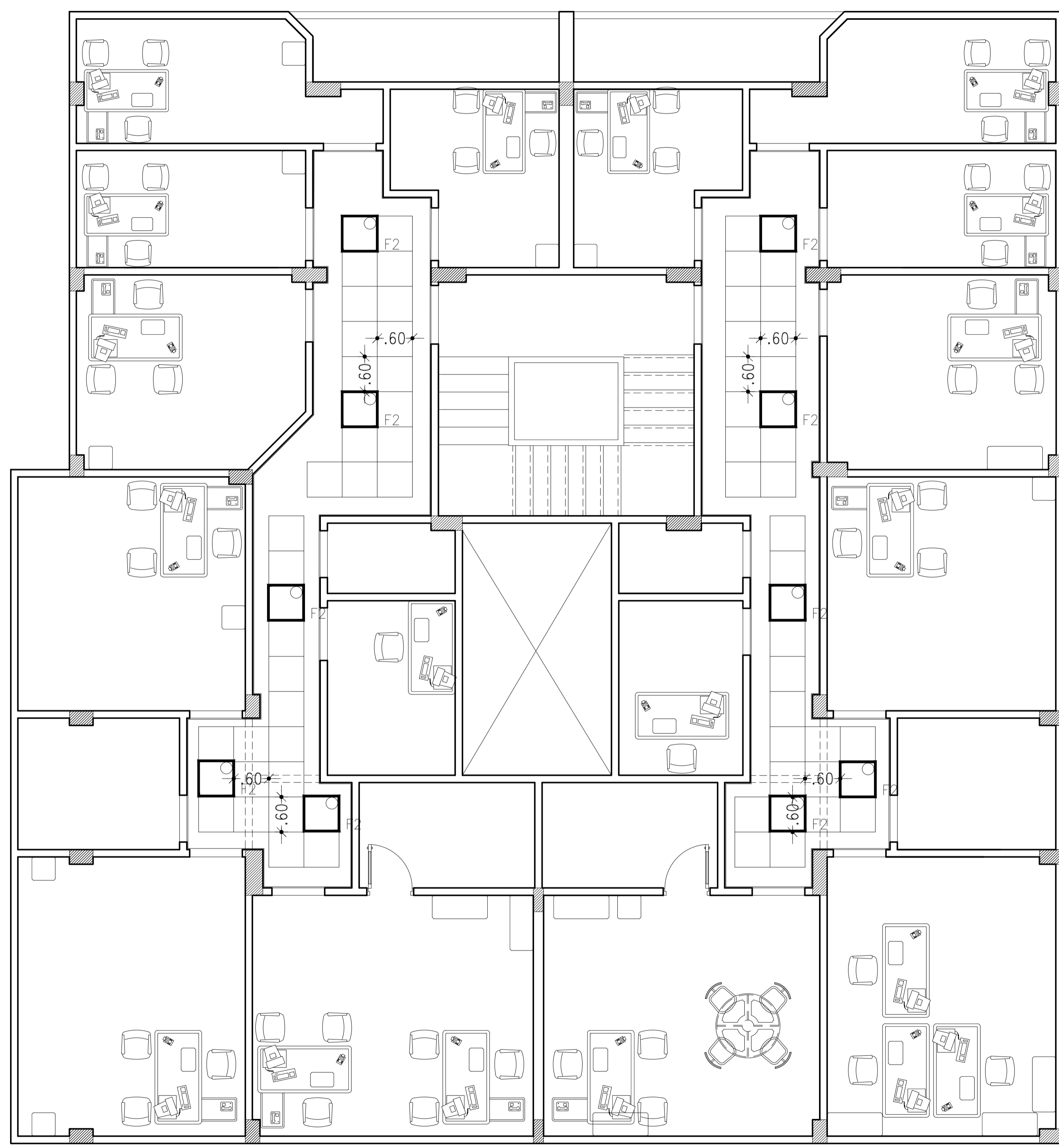
HA; 6E'8: LCGEF7"G'5?7:

HA; 6E'8: LCGEF7"G'5?7:

HA; 6E'8: LCGEF7"G'5?7:



ACOUSTIC TILES 600X600mm
+2.40 THE LEVEL FROM F.F.L.



&			
%			
S			
AB!	74G8	EBI 4-BAF	F: A4GH8

67-SAGA4@8
HA; 6E'8: LCG

5H27-A: A4@8
EF7 "G'5H?7A:

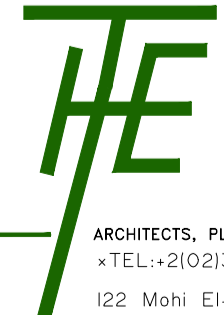
7E4J -A: GQ8
FIRST FLOOR CEILING PLAN

TEAM WORK:
REDA ABOUL-ELA

SCALE: 1:50
APPROVED BY: MOHAMED ABD ALHADY

SHEET NO.: 1 8 3 0 A R C 0 0 6
CHECKED BY: MOHAMED ABD ALHADY

REVISION: 2
DATE: 11 December 2018



House of Experts
TARIK FATHY Ph.D
HISHAM FATHY Ph.D
ESSAM FATHY B.Sc

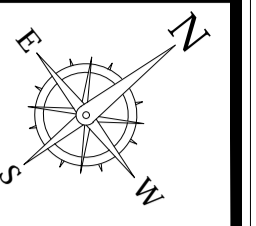
ARCHITECTS, PLANNERS AND CIVIL ENGINEERS, INC.
xTEL: +2(02)37602490 - +2(01)23990622 THE@2-THE.COM WWW.2-THE.COM
I22 Mohi El-Din Abu El-Ezz, El-Mohandseen, Cairo, Egypt.

HA; 6E'8: LCGEF7"G'5?7:

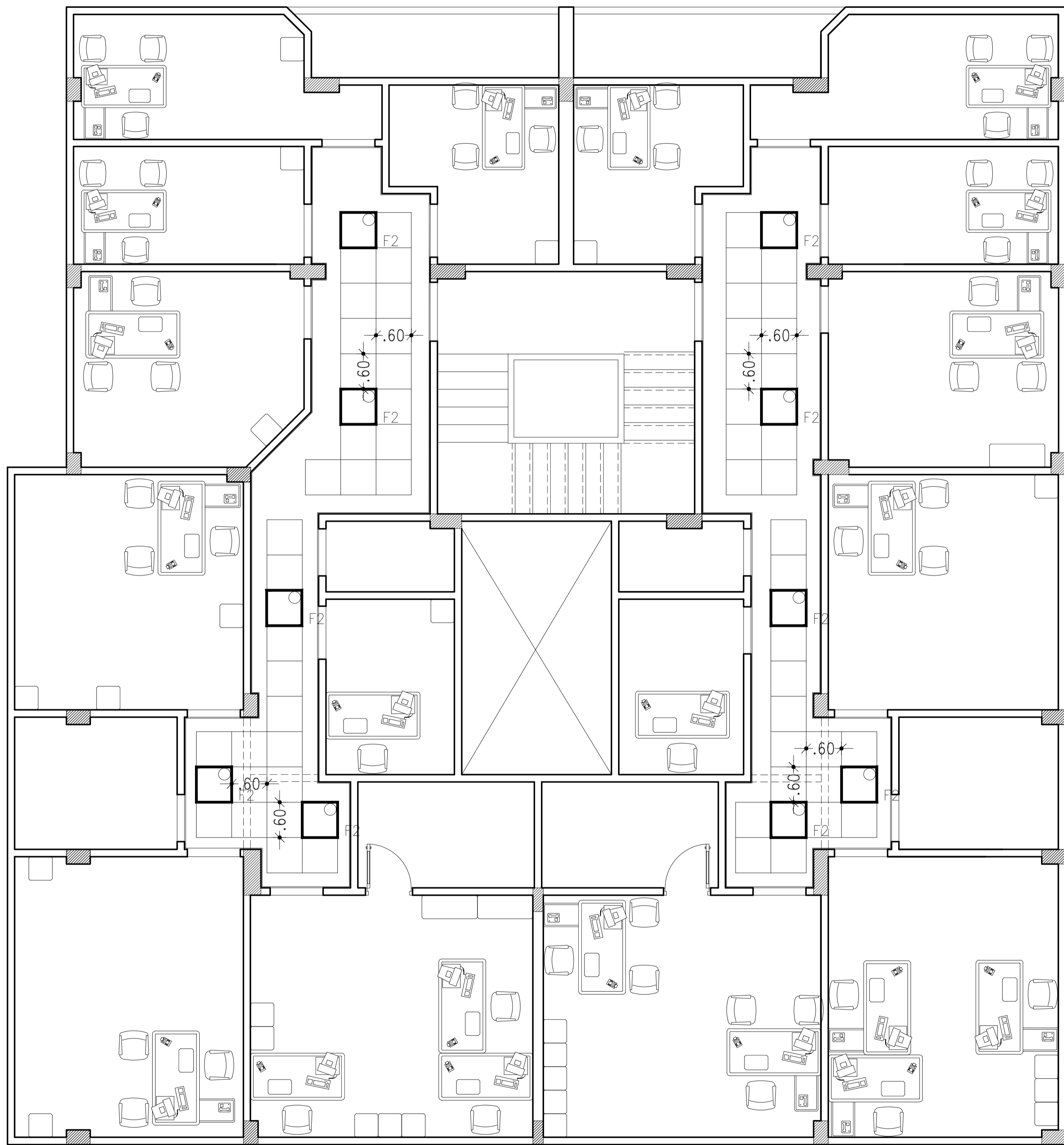
HA; 6E'8: LCGEF7"G'5?7:

HA; 6E'8: LCGEF7"G'5?7:

HA; 6E'8: LCGEF7"G'5?7:



ACOUSTIC TILES 600X600mm
+2.40 THE LEVEL FROM F.F.L.



&			
%			
S			
AB!	74G8	EBI 4-BAP	F: A4GH8

6?8AGA4@8
HA; 6E'8: LCG

5H27-A: A4@8
EF7 "G'5H?7A:

7E4J -A: GQ8
SECOND FLOOR CEILING PLAN

SCALE: 1:50
APPROVED BY: MOHAMED ABD ALHADY

SHEET NO.: 1830 ARC 007
CHECKED BY: MOHAMED ABD ALHADY

REVISION: 2
DATE: 11 December 2018

House of Experts
TARIK FATHY Ph.D
HISHAM FATHY Ph.D
ESSAM FATHY B.Sc

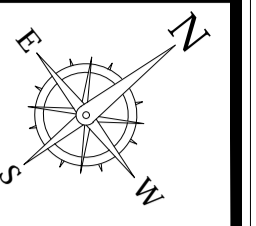
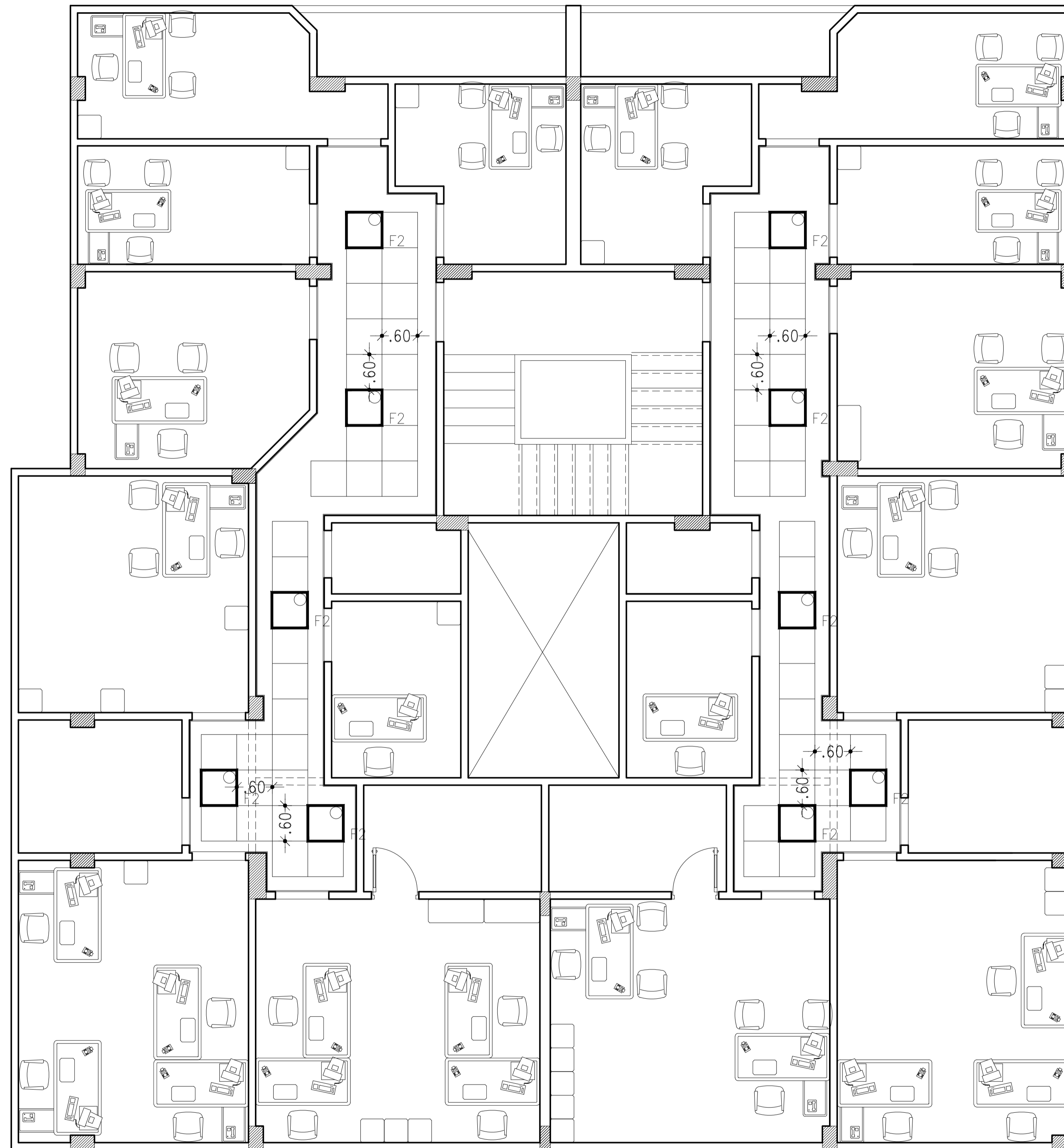
ARCHITECTS, PLANNERS AND CIVIL ENGINEERS, INC.
 *TEL: +2(02)37602490 - +2(01)23990622 THE@2-THE.COM WWW.2-THE.COM
 I22 Mohi El-Din Abu El-Ezz, El-Mohandseen, Cairo, Egypt.

HA; 6E'8: LCGEF7"G'5?7:

HA; 6E'8: LCGEF7"G'5?7:

HA; 6E'8: LCGEF7"G'5?7:

HA; 6E'8: LCGEF7"G'5?7:



ACOUSTIC TILES 600X600mm

+2.40 THE LEVEL FROM F.F.L.

&			
%			
S			
AB!	74G8	E8I 4-BAP	F< A4GH8

6?8AGA4@8

HA; 6E'8: LCG

5H27-A: A4@8

EF7 "G'5H27A:

7E4J -A: G478

THIRD FLOOR CEILING PLAN

TEAM WORK:
REDA ABOUL-ELA

SCALE: 1:50

APPROVED BY:
MOHAMED ABD ALHADY

SHEET NO.: 1 8 3 0 A R C 0 0 8

CHECKED BY:
MOHAMED ABD ALHADY

REVISION: 2

DATE: 11 December 2018

House of Experts
TARIK FATHY Ph.D
HISHAM FATHY Ph.D
ESSAM FATHY B.Sc

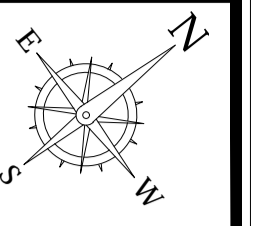
ARCHITECTS, PLANNERS AND CIVIL ENGINEERS, INC.
TEL: +2(02)37602490 - +2(01)223990622 THE@2-THE.COM WWW.2-THE.COM
122 Mohi El-Din Abu El-Ezz, El-Mohandseen, Cairo, Egypt.

HA; 6E'8: LCGEF7"G'5?7:

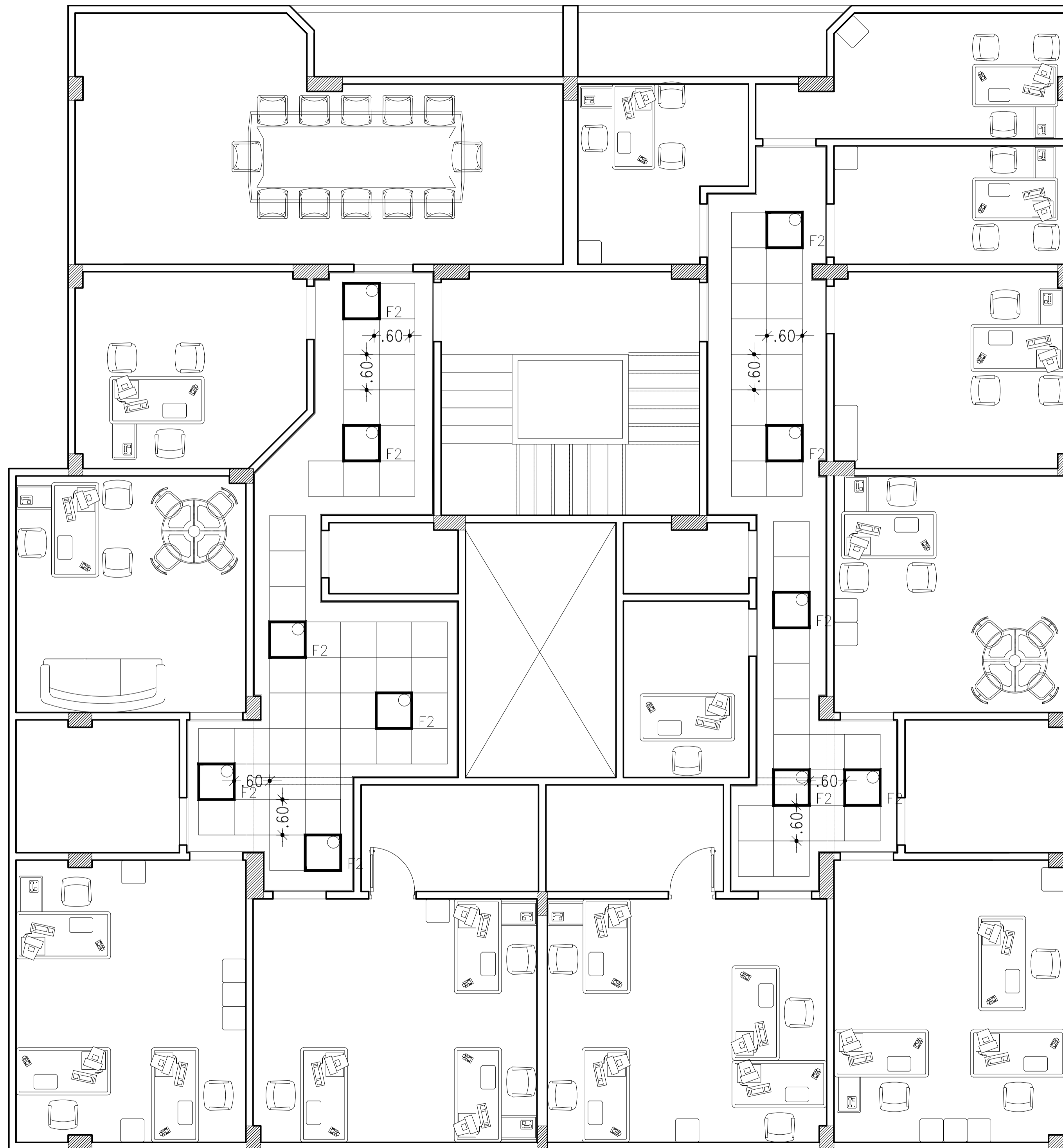
HA; 6E'8: LCGEF7"G'5?7:

HA; 6E'8: LCGEF7"G'5?7:

HA; 6E'8: LCGEF7"G'5?7:



ACOUSTIC TILES 600x600mm
+2.40 THE LEVEL FROM F.F.L.



AB1	74G8	EB1-F-BAF	F: A4GH8
-----	------	-----------	----------

6?8AGA4@8
HA; 6E'8: LCG

5H27-A: A4@8
EF7 "G'5H?7A:

7E4J-A: G678
FOURTH FLOOR CEILING PLAN

SCALE: N.T.S.
APPROVED BY: MOHAMED ABD ALHADY

SHEET NO.: 1830 ARC 009
CHECKED BY: MOHAMED ABD ALHADY

REVISION: 2
DATE: 11 December 2018



House of Experts
TARIK FATHY Ph.D
HISHAM FATHY Ph.D
ESSAM FATHY B.Sc

ARCHITECTS, PLANNERS AND CIVIL ENGINEERS, INC.
TEL: +2(02)37602490 - +2(01)223990622 THE@2-THE.COM WWW.2-THE.COM
122 Mohi El-Din Abu El-Ezz, El-Mohandseen, Cairo, Egypt.

HA; 6E'8: LCGEF7"G'5?7:

HA; 6E'8: LCGEF7"G'5?7:

HA; 6E'8: LCGEF7"G'5?7:

HA; 6E'8: LCGEF7"G'5?7: