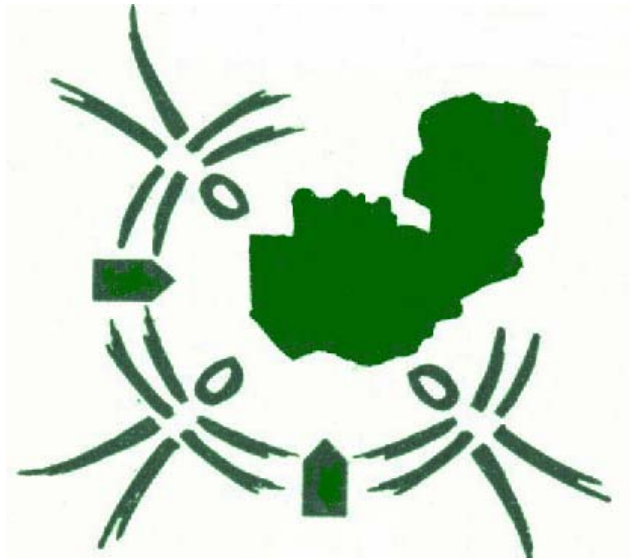


**2000 CENSUS**

**SUMMARY REPORT**



# Zambia

## 2000 CENSUS OF POPULATION AND HOUSING



Republic of Zambia

*Central Statistical Office  
P.O. Box 31908  
Lusaka*

*November, 2003*

***Summary Report***  
***for the***  
***2000 Census of***  
***Population***  
***and Housing***

***Central Statistical Office***  
***P.O. Box 31908***  
***Lusaka***

***e-mail: [info@zamstats.gov.zm](mailto:info@zamstats.gov.zm)***  
***website: [www.zamstats.gov.zm](http://www.zamstats.gov.zm)***

# Preface

---

The 2000 Census of Population and Housing was undertaken from 16<sup>th</sup> October to 15<sup>th</sup> November, 2000. This was the fourth census since Independence in 1964. The other three were carried out in 1969, 1980 and 1990. The 2000 Census operations were undertaken with the use of Grade 11 pupils as enumerators, Primary School Teachers as supervisors, Professionals from within Central Statistical Office and other government departments being as Trainers and Management Staff. Professionals and Technical Staff of the Central Statistical Office were assigned more technical and professional tasks.

Summary results are presented in this report. These include population counts up to ward level. Growth rates and densities are also shown. Detailed analytical and specialised reports show other indicators such as life expectancy, child mortality, fertility, migration, housing indicators, education, demographic structures and economic activity.

The success of the Census accrues to the dedicated support and involvement of a large number of institutions and individuals. My sincere thanks go to Co-operating partners namely the British Government, the Japanese Government, the United States Agency for International Development (USAID), United Nations Population Fund (UNFPA), the Norwegian Government, the Dutch Government, the Finnish Government, the Danish Government, the German Government, University of Michigan, the United Nations High Commission for Refugees (UNHCR) and the Canadian Government for providing financial, material and technical assistance which enabled the Central Statistical Office carry out the Census.

Finally, we would like to show gratitude to the people of Zambia for co-operating in providing the valuable information, to the enumerators, supervisors, master trainers, provincial census officers, district census officers and to all others who contributed to the collection, processing and compilation of this valuable information in one way or another.



Dr. Buleti G. Nsemukila  
**Director of Census and Statistics**

November, 2003

# Table of Contents

---

Preface .....	ii
Contents .....	iii
List of Tables .....	iv
List of Figures .....	v
List of Maps .....	vi
List of Annexes .....	vii
1. Introduction .....	1
2. Overview of Population Results .....	1
3. Percent Distribution of Population and Population Density .....	7
4. Provincial Population Patterns .....	8
4.1 Central Province .....	8
4.2 Copperbelt province .....	8
4.3 Eastern Province .....	9
4.4 Luapula Province .....	9
4.5 Lusaka Province .....	9
4.6 Northern Province .....	10
4.7 North-Western Province .....	10
4.8 Southern Province .....	10
4.9 Western Province .....	10
5. Summary .....	11
Annexes .....	12



# List of Tables

---

Table 1. Population Size and Growth Rates by Province, 1980–2000 .....	6
Table 2. Percent Distribution of Population and Population Density by Province and Census Year, 1980, 1990 and 2000 .....	8

# List of Figures

---

Figure 1: Percent Distribution of Population by Province, 2000 Census .....	7
Figure 2: Average Annual Inter-censal Population Growth Rates, 1980 – 2000 .....	7
Figure 3: Percent Distribution of Population by Province, 1980–200 Census ....	8
Figure 4: Population Density by Province, 1980 – 2000 .....	8



# List of Maps

---

Map 1: Provincial Population Growth Rates (1990 – 2000) .....	2
Map 2: Population Growth Rates by District (1990 – 2000) .....	3
Map 3: Provincial Population Density (1990 – 2000) .....	4
Map 4: District Population Density (1990 – 2000) .....	5

# List of Annexes

---

Annex 1: Population Size and Average Annual Growth Rates by District, Province and Census Year .....	12
Annex 2: Population by Sex, District, Province and Percent Distribution .....	14
Annex 3: Households and Population Distribution by Province, District, Constituency and Ward; .....	16
Annex 4: Key Persons Involved in the 2000 Census Analysis .....	42
Annex 5: 2000 Census of Population and Housing Questionnaire (Form A) .....	43
Annex 6: 2000 Census of Population and Housing Questionnaire (Form B) .....	45



## **1. Introduction**

The 2000 Census of Population and Housing was carried out from 16<sup>th</sup> October, to 15<sup>th</sup> November, 2000. The Census enumeration was conducted by a team of about 30,000 staff. Census enumerators visited all buildings in Zambia whether completed, incomplete, abandoned, habitable and inhabitable for the purpose of identifying characteristics of all buildings, households and other human aspects. All persons who lived in the buildings were counted. Persons who were present at the time of the enumerator's visit were counted directly while those who were absent were enumerated by proxy, that is, reported as persons who lived there but were absent. More information was collected for persons who were present than those who were absent.

Two different questionnaires, Form A and Form B (Annex 4 and 5) were used to collect information during the Census. Form A was used to collect information on people who were members of the household as well as visitors who spent the previous night with the household. The information collected on Form A included full names, sex and membership status (whether they were usual members of the household or visitors). This

questionnaire (Form A) was administered to either the head of the household or any other knowledgeable adult member of the household in cases where the head was not available. Detailed information about a person was collected using Form B. This questionnaire was administered to every individual member of the household who was present. Where the individual was too young to answer questions on their own or was not found at home, any adult with sufficient knowledge about the person not available answered questions on their behalf. In some cases, Form B could not be administered because even potential proxy respondents did not have sufficient information about the persons not available.

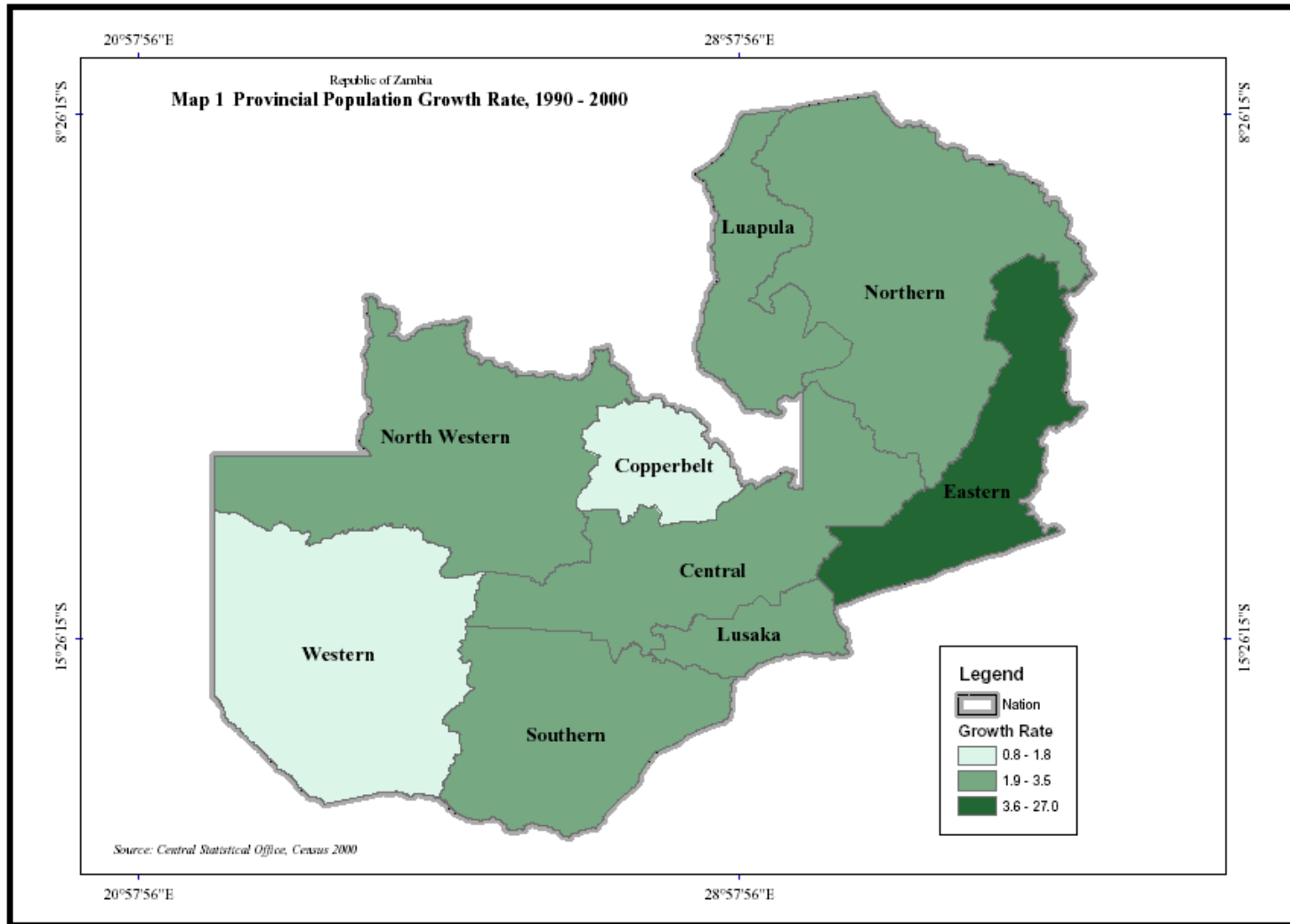
## **2. Overview of Population Results**

The population count from the 2000 Census of Population and Housing for Zambia is 9,885,591 as at 25<sup>th</sup> October 2000 (Census date). Of the 9,885,591 persons, 4,946,298 were males while 4,939,293 were females. Copperbelt province has the largest population followed by Lusaka, Eastern, Northern and Southern provinces. North-western province has the smallest population followed by Western and Luapula

Provinces (refer to Table 1 and Figure 1 for details).

Table 1 shows that the average annual intercensal growth rate for Zambia between 1990 and 2000 censuses was 2.5 compared to 3.1 percent between the 1980 and 1990 censuses. This shows that Zambia's average annual population growth rate declined by 19.4 percent between 1990 and 2000 censuses.

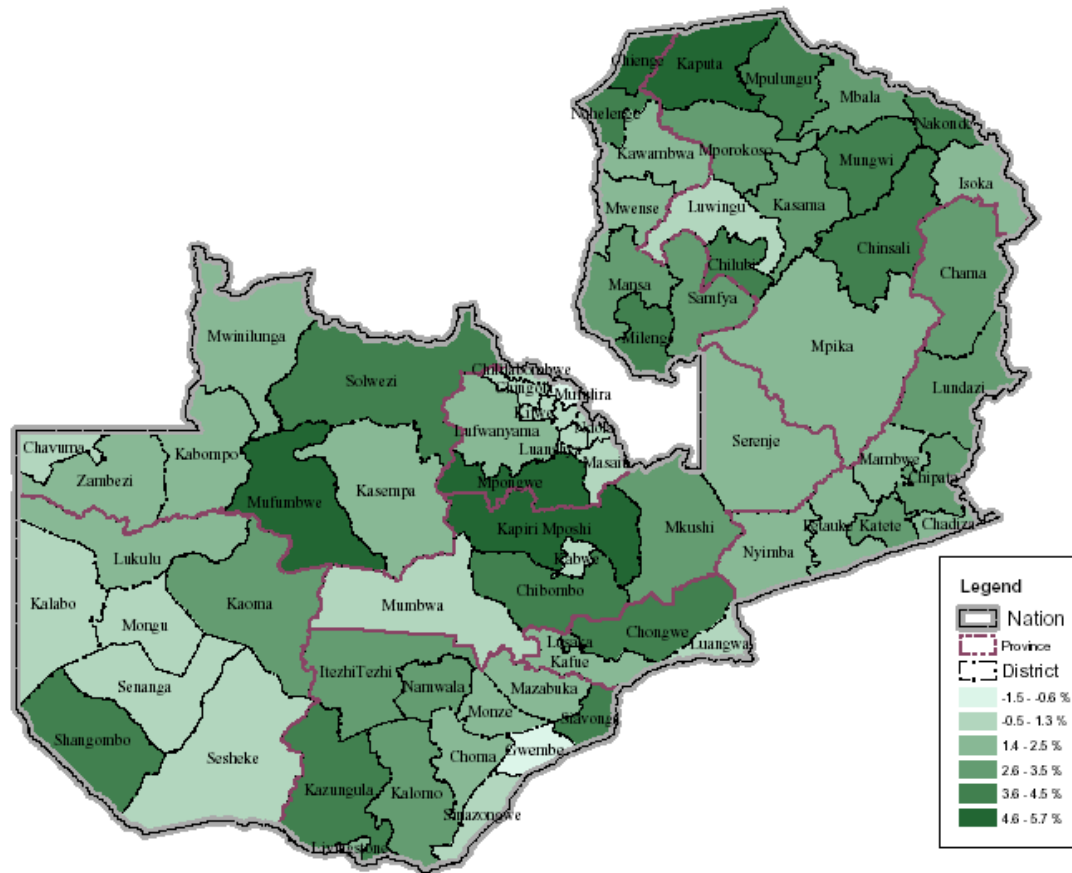
There has been a decline in growth rate in all the provinces except for Luapula province, which recorded an increase. The lowest population growth rate has been that of Copperbelt province which declined from 1.5 in 1980 -1990 intercensal period to 0.8 percent in the 1990-2000 intercensal period. The highest population growth rates have been in Lusaka (3.5 percent), Luapula (3.2 percent) and Northern province (3.1 percent).



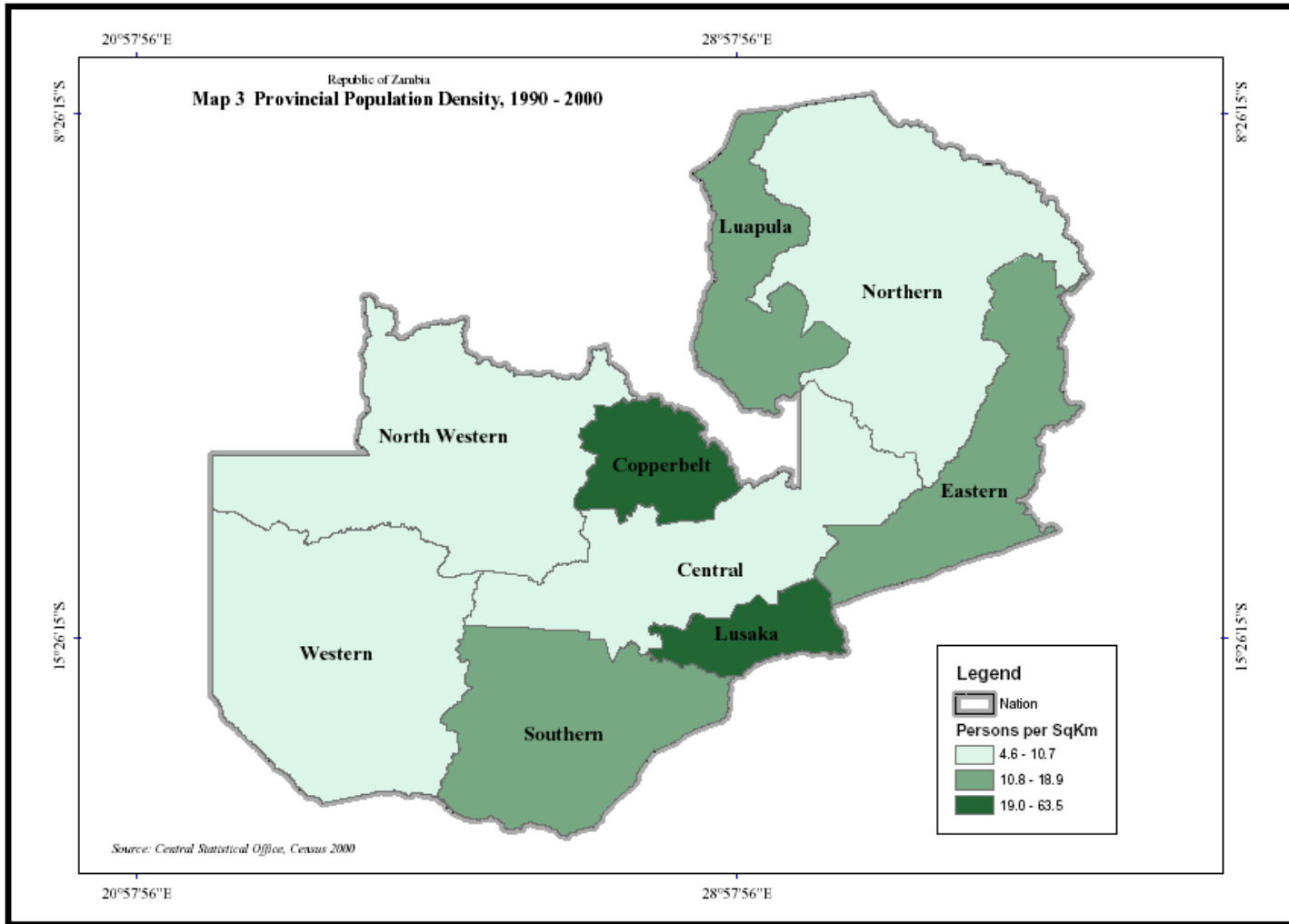
Map 2

**Population Growth Rate by District, 1990 - 2000**

National Average Annual Growth Rate is 2.5 Percent



Source: 2000 Census of Population and Housing

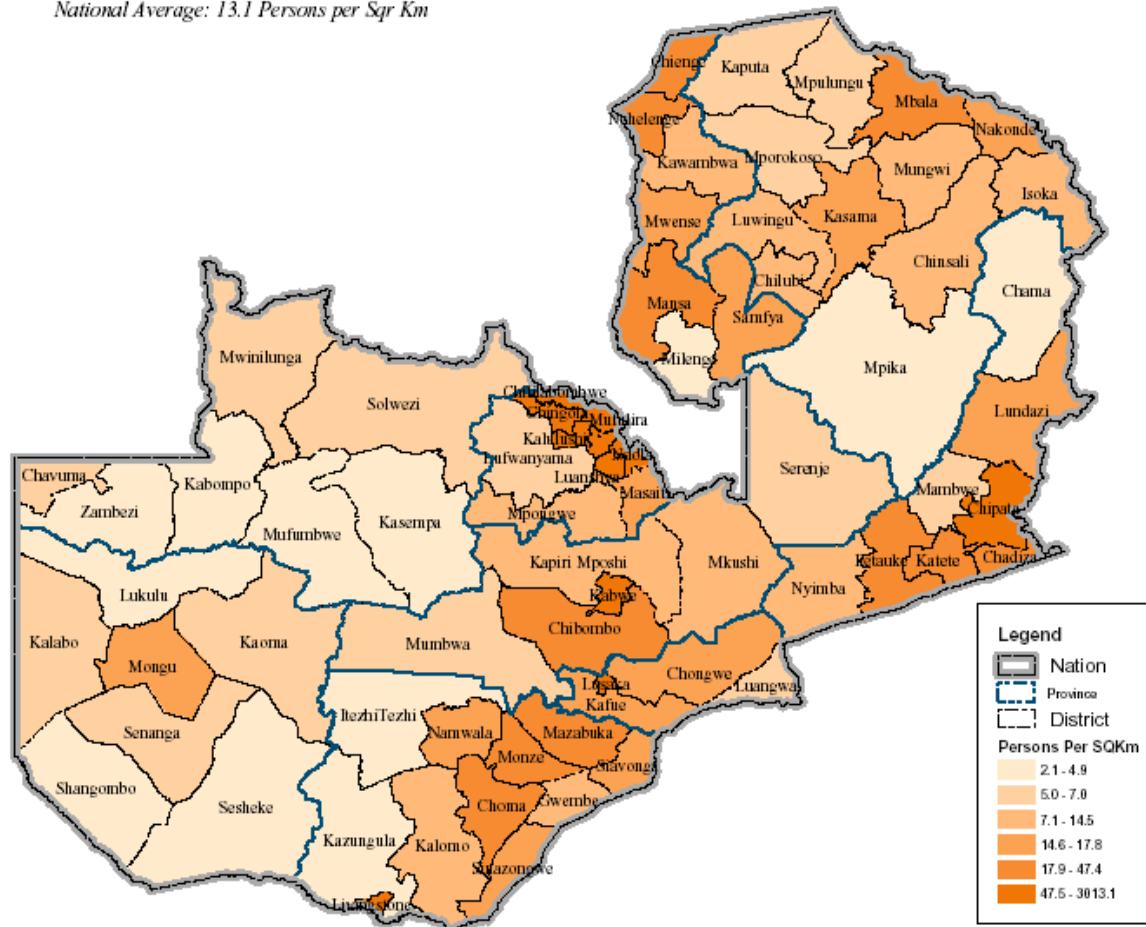




Map 4

### District Population Density

National Average: 13.1 Persons per Sqr Km



Source: 2000 Census of Population and Housing

The growth rates for provinces are also shown in Maps 1 and 2 and in Figure 2.

The population in districts in were to the international borders grew by much higher rates. In Luapula province, Chiengi grew by 5.9 percent, and Nchelenge by 4.3 percent. In Northern province, Kaputa grew by 5.0 percent, Mungwi by 4.2 percent and Nakonde by 4.2 percent; Shang’ombo (Western) by 4.1 percent and Solwezi (North-Western) by 4.0 percent. These average annual population growth rates are as a result of other factors such as spontaneous settlement by populations from neighbouring countries (refer to Annex 1).

Zambia and its eight neighbouring countries have a long history of

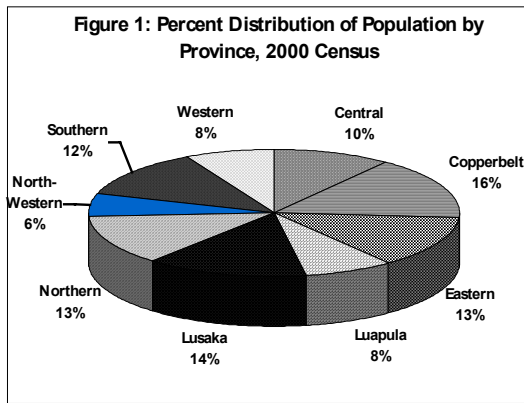
spontaneous settlement of populations along the border areas depending upon the vagaries of weather, political and socio-economic situations on either side of the international boundaries. Given the strife in Angola and the Democratic Republic of Congo, there would be strong motivation for persons from those countries to settle spontaneously in Zambian villages along the border areas.

The growth rates of Copperbelt, Southern and Western Provinces are lower than the national average with a deviation of -1.7, -0.2 and -0.7, respectively. The remaining six provinces have higher growth rates compared to the national average and deviations ranged from 0.2 in Eastern province to 1.0 in Lusaka Province (See Table 1).

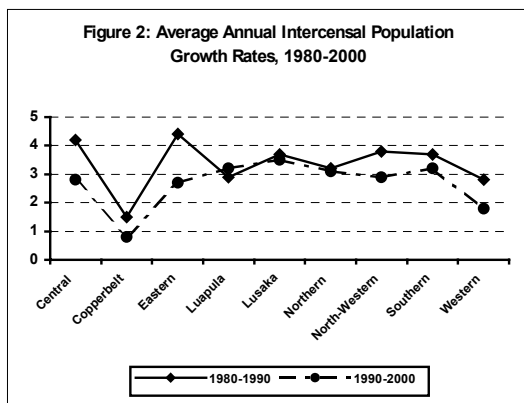
**Table 1: Population Size and Growth Rates by Province, 1980–2000**

Province	2000 Population by Sex			Average Annual Intercensal Population Growth Rates			Deviation from National Average Annual Intercensal Population Growth Rates	
	Male	Female	Total	80 – 90	90 – 00	% Change	80 – 90	90 – 00
Central	510,501	501,756	1,012,257	4.2	2.8	-33.3	1.1	0.3
Copperbelt	799,402	781,819	1,581,221	1.5	0.8	-46.7	-1.6	-1.7
Eastern	648,676	657,497	1,306,173	4.4	2.7	-38.6	1.3	0.2
Luapula	387,825	387,528	775,353	2.9	3.2	10.3	-0.2	0.7
Lusaka	705,778	685,551	1,391,329	3.7	3.5	-5.4	0.6	1.0
Northern	629,976	628,720	1,258,696	3.2	3.1	-3.1	0.1	0.6
North-Western	290,856	292,494	583,350	3.8	2.9	-23.7	0.7	0.4
Southern	601,440	610,684	1,212,124	3.7	2.3	-37.8	0.6	-0.2
Western	371,844	393,244	765,088	2.8	1.8	-35.7	-0.3	-0.7

<b>Zambia</b>	4,946,298	4,939,293	9,885,591	3.1	2.5	-19.4	-	-
---------------	-----------	-----------	-----------	-----	-----	-------	---	---



Population Density is herein defined as the number of people per square kilometre. Table 2 shows area, percent distribution of population and population density by province and census year. The area of Zambia is 752,612 square kilometres. Among the provinces, Northern Province has the largest area of 147,826 square kilometres while Lusaka has the smallest with 21,896 square kilometres.



The percent distribution of Population has been declining in Copperbelt and Western Provinces, while it has been increasing in Central, Eastern, Luapula, Lusaka, Northern and North-western Provinces. Copperbelt Province has currently the largest share of the population with 16.0 percent followed by Lusaka Province with 14.1 and Eastern Province with 13.2 percent. Northern Province has the fourth largest share with 12.7 followed by Southern Province with 12.3 percent, Central Province with 10.2 percent, Luapula Province with 7.8 percent and Western Province with 7.7 percent. North-western Province has the smallest share with 5.9 percent (Refer to Figures 1, 2 and 3) and Table 2 for details).

The population growth rate for Copperbelt Province has been low. It was anticipated in 1990 that most people who would leave the Copperbelt Province as a result of the slow economic activity would migrate to their places of origin. This seems to have happened. The high rates in Northern and Luapula provinces could partly be due to high rates of return migration from the Copperbelt Province. Lusaka may have also been affected by an inflow of people from the Copperbelt province.

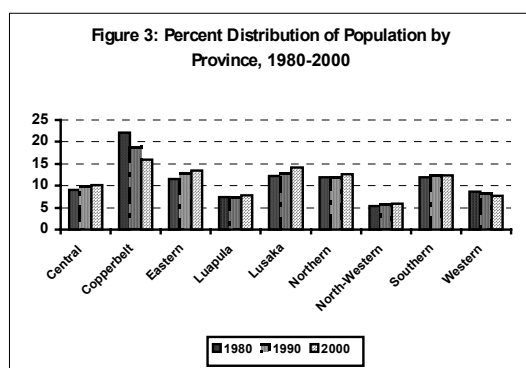
### 3. Percent Distribution of Population and Population Density

The most densely populated province in Zambia is Lusaka whose density has increased from 31.6 in 1980 to 45.1 in 1990 and to 63.5 persons per square kilometre in 2000. The second most densely populated province is Copperbelt with a density of 50.5 persons per square kilometre. In the

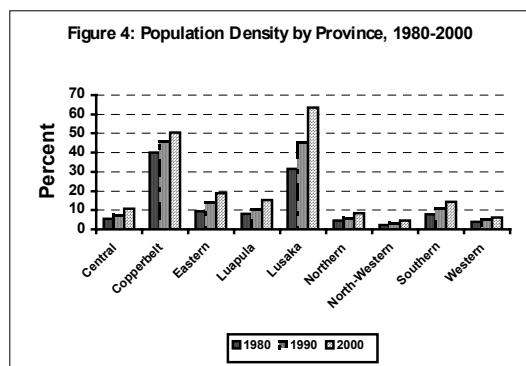
two previous Census years (1980 and 1990), the density of Copperbelt province has been higher than that of Lusaka province. North-western Province has the least density of 4.6 persons per square kilometre. Details are presented in Maps 3 and 4, Table 2 and Figure 4.

**Table 2: Percent Distribution of Population and Population Density by Province and Census Year, 1980, 1990 and 2000**

Province	Area	Percent Distribution of Population			Population Density		
		1980	1990	2000	1980	1990	2000
Central	94,394	9.0	9.9	10.2	5.4	7.6	10.7
Copperbelt	31,328	22.1	18.8	16.0	39.9	45.6	50.5
Eastern	69,106	11.5	12.9	13.2	9.4	13.9	18.9
Luapula	50,567	7.4	7.3	7.8	8.3	10.4	15.3
Lusaka	21,896	12.2	12.8	14.1	31.6	45.1	63.5
Northern	147,826	11.9	11.9	12.7	4.6	5.8	8.5
North Western	125,826	5.4	5.6	5.9	2.4	3.1	4.6
Southern	85,283	11.9	12.4	12.3	7.9	10.6	14.2
Western	126,386	8.6	8.2	7.7	3.9	4.8	6.1
Total	752,612	100.0	100.0	100.0	7.5	9.8	13.1



Source: Census 1980, 1990 & 2000



Source: Census 1980, 1990 & 2000

persons of whom 50.4 percent were males and 49.6 percent are females. The population growth rate for central province declined from 4.2 percent in the 1980–1990 intercensal to 2.8 in 1990 – 2000 period; a decline of 33.3 percent. Chibombo District has the largest share of the population in the province with 24.1 percent of the province followed by Kapiri Mposhi District with 19.2 percent. Kabwe District comprises 17.5 percent of the province's population, Mumbwa District 15.7 percent, Serenje District has 13.1 percent and Mkushi District has 10.6 percent.

Kabwe and Mumbwa districts have growth rates of less than 1 percent. Kabwe district grew at the rate of 0.5 percent in the intercensal period of 1990–2000. Kapiri Mposhi district has the highest growth rate of 5.8

## 4. Provincial Population Patterns

### 4.1 Central Province

Central Province had a population of 1,012,257

percent followed by Chibombo district with 4.3 percent. Mkushi has a growth rate of 3.4 percent while Serenje district has 2.1 percent.

#### **4.2 Copperbelt Province**

The population for Copperbelt Province was 1,581,221. Of this population 50.6 percent were males and 49.4 percent were females. The growth rate for the province is 0.8 percent. Kitwe District has the largest population in the province with 23.8 percent. This is closely followed by Ndola district with 23.7 percent. Lufwanyama District has the smallest population at 4.0 percent of the total population followed by Mpongwe at 4.1 percent.

Six districts have had growth rates of less than 1 percent. Population in Mufulira District decreased at an average annual growth rate of 0.6 percent per annum in the 1990 - 2000 intercensal period.

Mpongwe District has the highest growth rate of 5.2 percent followed by Lufwanyama at 2.0 percent, Masaiti at 1.2 percent and Ndola at 1.1 Percent. The rest of the districts have less than 1 percent growth rates, with Mufulira recording a decline (-0.6 percent).

#### **4.3 Eastern Province**

Eastern Province had a population of 1,306,173. Of this population, 49.7 percent were males and 50.3 percent were females. Eastern province is growing at an average annual growth rate of 2.7 percent. The average annual population growth rate declined by 38.6 percent from 4.4 percent in the 1980-1990 intercensal period.

The average annual population growth rates for Petauke and Mambwe were 1.7 and 1.6 percent, in the 1990-2000 intercensal period, respectively, whereas all other districts in the province grew at a rate of above 2 percent. A further Look at the 1980-1990 inter-censal average growth rate for the province shows that the average annual population growth rate for Petauke ( which was split into Nyimba and Petauke in 1993) was 5.2 percent, 0.8 percent above the provincial growth rate (CSO, 1995:36). It is probable that the two districts lost populations to Mozambique after peace was achieved in that country. Petauke was settled by refugees and spontaneous settlers from Mozambique in the 1980-1990 inter-censal period.

#### **4.4 Luapula Province**

The population for Luapula province was 775,353 persons. Of this population, 50.0 percent were males and the other 50.0 percent were females. In the 1990 - 2000 intercensal period, the population for Luapula Province had been growing at an annual growth rate of 3.2 percent. The growth rate increased from 2.9 percent between 1980-1990, an increase of about 10.3 percent. The district growth rates vary considerably from 1.9 percent in Kawambwa to 5.9 percent in Chiengi, which had the highest annual growth rate in the province. Mansa, Milenge and Nchelenge districts had 3.1, 3.7 and 4.3 percent growth rates respectively, while Mwense and Samfya districts had 2.1 and 3.1, annual percent growth rates, respectively.

#### **4.5 Lusaka Province**

The population for Lusaka province increased from 991,226 in 1990 to 1,391,329 in 2000. This gives an annual population growth rate of 3.5 percent. The growth rate has increased slightly from 2.7 percent in the 1980 - 1990 intercensal period and has now the highest growth rate in the country. Chongwe district has the highest annual growth rate of 3.7 percent, followed by

Lusaka with 3.6 percent. Kafue district has a growth rate of 2.5 percent while Luangwa has the lowest growth rate of 1.1 percent.

More than three quarters (78 percent) of the provincial population is in Lusaka district (1,084,703). Chongwe district has 9.9 percent, Kafue district has 10.8 percent, while Luangwa district has 1.4 percent.

#### **4.6 Northern Province**

Northern Province had a population of 1,258,696 of whom 50.0 percent were males and 50.0 percent were females. The population has increased from 925,865 in 1990. This indicates an annual population growth rate of 3.1 percent which is the third highest after Lusaka (3.5 percent) and Luapula (3.2 percent). Among the districts in the province, Luwingu has the lowest population growth rate at 1.1 percent while Kaputa has the highest at 5.0 percent. Mpulungu had second highest at 4.3 percent.

Kasama district has the largest share of population in the province with 13.6 percent followed by Mbala with 11.9 percent. Mpika is third largest with 11.6 percent.



#### **4.7 North-western Province**

The population for North-western Province increased from 438,216 in 1990 to 583,350 in 2000. This gives an average annual population growth rate of 2.9 percent. The population growth rate declined from 3.8 percent between 1980-90 to 2.9 percent in the 1990-2000 period.

Kasempa district had the highest annual population growth rate of 5.8 percent followed by Solwezi at 4.0 percent, Zambezi 2.4 percent, Mwinilunga at 2.3 percent, Kabompo at 2.1 percent, Mufumbwe at 1.7 percent and Chavuma at 0.7 percent.

Solwezi district had the largest share of the provincial population with 34.9 percent followed by Mwinilunga with 20.1 percent. Chavuma has the with 5.1 percent. Mufumbwe and Kasempa districts have percentage shares of 12.2 and 7.5 percent, respectively.

#### **4.8 Southern Province**

Southern Province had a population of 1,212,124 of whom 49.6 percent were males and 50.4 were percent females. The population increased from 965,591 in 1990. The average annual population growth rate for the province over the

intercensal period 1990-2000 was 2.3 percent. There has been a decline in the growth rate from 3.7 percent in the 1980 to 1990 period. Among the districts of the province, Siavonga has the highest population growth rate of 4.6 percent, followed by Kazungula with 4.2 percent. Itezhi-tezhi had a growth rate of 3.2 percent, while Namwala had a rate of 3.0 percent and that of Kalomo is 2.9 percent. The population growth rate for Gwembe district was minus 1.5 percent and this is the lowest growth rate in the province.

#### **4.9 Western Province**

The population for Western Province increased from 638,756 in 1990 to 765,088 in 2000. The average annual growth rate for the province was 1.8 percent, a decline from 2.8 percent in the previous intercensal period of 1980 to 1990, representing a 35.7 percent decline.

Among the districts, Shang'ombo has the highest rate of growth at 4.1 percent followed by Kaoma at 3.4 percent. Kalabo and Senanga have growth rates of 1.0 percent, each, while that of Sesheke was 1.3 percent and Lukulu was 2.4 percent.

Kaoma and Mongu districts have the largest share of population with 21.2 percent, each. Lukulu district has the smallest with 8.9 percent.

## **5. Summary**

The population of Zambia has increased from 7.8 million in 1990 to 9.9 million persons in 2000. This gives an average annual growth rate of 2.5 percent. Of the current population, 50 percent are males and another 50 percent are females.

Lusaka Province has the highest average population growth rate of 3.5 percent followed by Luapula (3.2 percent) and Northern (3.1 percent). The lowest growth rate is in Copperbelt (0.8 percent) followed by Western at 1.8 percent.

The lowest average annual population growth rate among districts is that of Gwembe in Southern Province with minus 1.5 percent followed by that of Mufulira in Copperbelt Province with minus 0.6 percent. The highest growth rate is that of Chiengi in Luapula Province at 5.9 percent, closely followed by that of Kapiri Mposhi in Central Province and Kasempa in North-western Province, at 5.8 percent in each case.

# Annex 1

## Population Size and Average Annual Growth Rates by District, Province and Census Year

	1990 Population			2000 Population			Average Annual Growth Rate (percent)		
	Male	Female	Total	Male	Female	Total	Male	Female	Total
<b>Central</b>									
Chibombo	78,818	79,564	158,382	121,948	119,664	241,612	4.5	4.2	4.3
Kabwe	85,398	83,628	169,026	89,003	87,755	176,758	0.4	0.5	0.5
Kapiri Mposhi	55,503	55,259	110,762	98,558	96,194	194,752	5.9	5.7	5.8
Mkushi	38,863	37,884	76,747	54,628	52,810	107,438	3.5	3.4	3.4
Mumbwa	73,467	75,460	148,927	79,795	79,066	158,861	0.8	0.5	0.7
Serenje	53,181	54,793	107,974	66,569	66,267	132,836	2.3	1.9	2.1
<b>Total</b>	<b>385,230</b>	<b>386,588</b>	<b>771,818</b>	<b>510,501</b>	<b>501,756</b>	<b>1,012,257</b>	<b>2.9</b>	<b>2.6</b>	<b>2.8</b>
<b>Copperbelt</b>									
Chililabombwe	33,202	32,016	65,218	34,391	33,142	67,533	0.4	0.4	0.4
Chingola	85,642	83,357	168,999	86,928	85,098	172,026	0.2	0.2	0.2
Kalulushi	35,622	33,975	69,597	38,786	37,020	75,806	0.9	0.9	0.9
Kitwe	175,812	171,212	347,024	189,650	186,474	376,124	0.8	0.9	0.8
Luanshya	74,166	70,649	144,815	74,963	72,945	147,908	0.1	0.3	0.2
Lufwanyama	26,725	25,020	51,745	32,198	30,987	63,185	1.9	2.2	2.0
Masaiti	42,309	42,522	84,831	48,892	46,689	95,581	1.5	0.9	1.2
Mpongwe	19,578	19,140	38,718	32,846	31,525	64,371	5.3	5.1	5.2
Mufulira	77,067	75,668	152,735	72,526	71,404	143,930	-0.6	-0.6	-0.6
Ndola	169,396	165,381	334,777	188,222	186,535	374,757	1.1	1.2	1.1
<b>Total</b>	<b>739,519</b>	<b>718,940</b>	<b>1,458,459</b>	<b>799,402</b>	<b>781,819</b>	<b>1,581,221</b>	<b>0.8</b>	<b>0.8</b>	<b>0.8</b>
<b>Eastern</b>									
Chadiza	33,183	33,498	66,681	42,204	41,777	83,981	2.4	2.2	2.3
Chama	27,150	28,022	55,172	37,025	37,865	74,890	3.2	3.1	3.1
Chipata	128,705	132,395	261,100	183,352	184,187	367,539	3.6	3.4	3.5
Katete	70,374	73,578	143,952	94,148	95,102	189,250	3.0	2.6	2.8
Lundazi	88,869	90,545	179,414	117,277	119,556	236,833	2.8	2.8	2.8
Mambwe	29,139	30,877	60,016	23,699	23,677	47,376	2.4	2.0	2.2
Nyimba	18,780	19,520	38,300	34,824	35,601	70,425	1.8	1.4	1.6
Petauke	96,709	103,349	200,058	116,147	119,732	235,879	1.9	1.5	1.7
<b>Total</b>	<b>492,909</b>	<b>511,784</b>	<b>1,004,693</b>	<b>648,676</b>	<b>657,497</b>	<b>1,306,173</b>	<b>2.8</b>	<b>2.5</b>	<b>2.7</b>
<b>Luapula</b>									
Chiengi	23,297	23,993	47,290	41,979	41,845	83,824	6.1	5.7	5.9
Kawambwa	41,753	43,554	85,307	50,708	51,795	102,503	2.0	1.8	1.9
Mansa	65,278	67,222	132,500	89,629	90,120	179,749	3.2	3.0	3.1
Milenge	9,847	10,198	20,045	14,449	14,341	28,790	3.9	3.5	3.7
Mwense	42,700	43,626	86,326	52,479	53,280	105,759	2.1	2.0	2.1
Nchelenge	36,369	36,392	72,761	56,343	54,776	111,119	4.5	4.2	4.3
Samfya	58,978	61,286	120,264	82,238	81,371	163,609	3.4	2.9	3.1
<b>Total</b>	<b>278,222</b>	<b>286,271</b>	<b>564,493</b>	<b>387,825</b>	<b>387,528</b>	<b>775,353</b>	<b>3.4</b>	<b>3.1</b>	<b>3.2</b>
<b>Lusaka</b>									
Chongwe	48,021	47,717	95,738	70,211	67,250	137,461	3.9	3.5	3.7
Kafue	59,668	57,686	117,354	77,001	73,216	150,217	2.6	2.4	2.5
Luangwa	8,363	8,707	17,070	9,546	9,402	18,948	1.3	0.8	1.1
Lusaka	382,652	378,412	761,064	549,020	535,683	1,084,703	3.7	3.5	3.6
<b>Total</b>	<b>498,704</b>	<b>492,522</b>	<b>991,226</b>	<b>705,778</b>	<b>685,551</b>	<b>1,391,329</b>	<b>3.5</b>	<b>3.4</b>	<b>3.5</b>
<b>Northern</b>									
Chilubi	21,349	23,001	44,350	32,936	33,402	66,338	4.4	3.8	4.1
Chinsali	44,567	45,212	89,779	64,362	64,284	128,646	3.7	3.6	3.7
Isoka	40,265	42,298	82,563	49,428	49,891	99,319	2.1	1.7	1.9
Kaputa	26,844	26,559	53,403	44,556	42,677	87,233	5.2	4.9	5.0

	1990 Population			2000 Population			Average Annual Growth Rate (percent)		
	Male	Female	Total	Male	Female	Total	Male	Female	Total
Kasama	61,979	63,513	125,492	85,070	85,859	170,929	3.2	3.1	3.1
Luwingu	35,367	36,797	72,164	40,612	40,146	80,758	1.4	0.9	1.1
Mbala	55,285	55,695	110,980	75,085	74,549	149,634	3.1	3.0	3.0
Mpika	60,812	62,287	123,099	73,151	73,045	146,196	1.9	1.6	1.7
Mporokoso	26,979	27,909	54,888	36,975	36,954	73,929	3.2	2.9	3.0
Mpulungu	22,114	22,419	44,533	34,292	33,310	67,602	4.5	4.0	4.3
Mungwi	37,019	37,716	74,735	56,200	56,777	112,977	4.3	4.2	4.2
Nakonde	24,285	25,594	49,879	37,309	37,826	75,135	4.4	4.0	4.2
<b>Total</b>	<b>456,865</b>	<b>469,000</b>	<b>925,865</b>	<b>629,976</b>	<b>628,720</b>	<b>1,258,696</b>	<b>3.3</b>	<b>3.0</b>	<b>3.1</b>

#### North-Western

Chavuma	13,237	14,707	27,944	14,815	15,126	29,941	1.1	0.3	0.7
Mufumbwe	12,312	12,839	25,151	35,286	35,952	71,238	2.0	1.5	1.7
Kabompo	29,090	31,074	60,164	25,810	26,094	51,904	2.3	1.9	2.1
Kasempa	20,570	21,691	42,261	21,875	22,127	44,002	5.9	5.6	5.8
Mwinilunga	45,799	48,142	93,941	58,543	58,962	117,505	2.5	2.1	2.3
Solwezi	67,270	70,458	137,728	102,241	101,556	203,797	4.3	3.7	4.0
Zambezi	24,548	26,479	51,027	32,286	32,677	64,963	2.8	2.1	2.4
<b>Total</b>	<b>212,826</b>	<b>225,390</b>	<b>438,216</b>	<b>290,856</b>	<b>292,494</b>	<b>583,350</b>	<b>3.2</b>	<b>2.6</b>	<b>2.9</b>

#### Southern

Choma	83,288	87,399	170,687	100,791	104,107	204,898	1.9	1.8	1.8
Gwembe	19,405	20,380	39,785	16,862	17,271	34,133	-1.4	-1.6	-1.5
Itezhi Tezhi	15,698	15,726	31,424	22,170	20,941	43,111	3.5	2.9	3.2
Kalomo	62,109	65,653	127,762	83,175	86,328	169,503	3.0	2.8	2.9
Kazungula	22,410	22,747	45,157	34,178	34,087	68,265	4.3	4.1	4.2
Livingstone	42,230	41,550	83,780	51,828	51,460	103,288	2.1	2.2	2.1
Mazabuka	81,418	80,903	162,321	102,585	100,634	203,219	2.3	2.2	2.3
Monze	65,190	68,481	133,671	80,697	82,881	163,578	2.2	1.9	2.0
Namwala	29,857	31,991	61,848	40,486	42,324	82,810	3.1	2.8	3.0
Siavonga	18,222	19,275	37,497	29,171	29,693	58,864	4.8	4.4	4.6
Sinazongwe	34,661	36,998	71,659	39,497	40,958	80,455	1.3	1.0	1.2
<b>Total</b>	<b>474,488</b>	<b>491,103</b>	<b>965,591</b>	<b>601,440</b>	<b>610,684</b>	<b>1,212,124</b>	<b>2.4</b>	<b>2.2</b>	<b>2.3</b>

#### Western

Kalabo	47,997	55,881	103,878	54,176	60,630	114,806	1.2	0.8	1.0
Kaoma	56,579	60,037	116,616	79,348	83,220	162,568	3.4	3.3	3.4
Lukulu	25,671	28,382	54,053	33,585	34,790	68,375	2.7	2.1	2.4
Mongu	70,891	79,238	150,129	79,300	82,702	162,002	1.1	0.4	0.8
Senanga	46,533	52,271	98,804	52,587	56,532	109,119	1.2	0.8	1.0
Sesheke	33,283	35,141	68,424	39,355	38,814	78,169	1.7	1.0	1.3
Shang'ombo	21,859	24,993	46,852	33,493	36,556	70,049	4.4	3.9	4.1
<b>Total</b>	<b>302,813</b>	<b>335,943</b>	<b>638,756</b>	<b>371,844</b>	<b>393,244</b>	<b>765,088</b>	<b>2.1</b>	<b>1.6</b>	<b>1.8</b>

<b>Zambia</b>	<b>3,841,576</b>	<b>3,917,541</b>	<b>7,759,117</b>	<b>4,946,298</b>	<b>4,939,293</b>	<b>9,885,591</b>	<b>2.6</b>	<b>2.3</b>	<b>2.5</b>
---------------	------------------	------------------	------------------	------------------	------------------	------------------	------------	------------	------------

## ANNEX 2

### Population by Sex, District, Province and Percent Distribution

	2000		Population	Percent Distribution		
	Male	Female	Total	Male	Female	Total
<b>Central</b>						
Chibombo						100.00
	121,948	119,664	241,612	50.5	49.5	
Kabwe						100.00
	89,003	87,755	176,758	50.4	49.6	
Kapiri Mposhi						100.00
	98,558	96,194	194,752	50.6	49.4	
Mkushi						100.00
	54,628	52,810	107,438	50.8	49.2	
Mumbwa						100.00
	79,795	79,066	158,861	50.2	49.8	
Serenje						100.00
	66,569	66,267	132,836	50.1	49.9	
<b>Total</b>	<b>510,501</b>	<b>501,756</b>	<b>1,012,257</b>	<b>50.4</b>	<b>49.6</b>	<b>100.00</b>
<b>Copperbelt</b>						
Chililabombwe						100.00
	34,391	33,142	67,533	50.9	49.1	
Chingola						100.00
	86,928	85,098	172,026	50.5	49.5	
Kalulushi						100.00
	38,786	37,020	75,806	51.2	48.8	
Kitwe						100.00
	189,650	186,474	376,124	50.4	49.6	
Luanshya						100.00
	74,963	72,945	147,908	50.7	49.3	
Lufwanyama						100.00
	32,198	30,987	63,185	51.0	49.0	
Masaiti						100.00
	48,892	46,689	95,581	51.2	48.8	
Mpongwe						100.00
	32,846	31,525	64,371	51.0	49.0	
Mufulira						100.00
	72,526	71,404	143,930	50.4	49.6	
Ndola						100.00
	188,222	186,535	374,757	50.2	49.8	
<b>Total</b>	<b>799,402</b>	<b>781,819</b>	<b>1,581,221</b>	<b>50.6</b>	<b>49.4</b>	<b>100.00</b>
<b>Eastern</b>						
Chadiza						100.00
	42,204	41,777	83,981	50.3	49.7	
Chama						100.00
	37,025	37,865	74,890	49.4	50.6	
Chipata						100.00
	183,352	184,187	367,539	49.9	50.1	
Katete						100.00
	94,148	95,102	189,250	49.7	50.3	
Lundazi						100.00
	117,277	119,556	236,833	49.5	50.5	
Mambwe						100.00
	23,699	23,677	47,376	50.0	50.0	
Nyimba						100.00
	34,824	35,601	70,425	49.4	50.6	
Petauke						100.00
	116,147	119,732	235,879	49.2	50.8	

	2000		Population Total	Percent Distribution		
	Male	Female		Male	Female	Total
<b>Total</b>	<b>648,676</b>	<b>657,497</b>	<b>1,306,173</b>	<b>49.7</b>	<b>50.3</b>	<b>100.00</b>
<b>Luapula</b>						
Chienge						100.00
Kawambwa	41,979	41,845	83,824	50.1	49.9	100.00
Mansa	50,708	51,795	102,503	49.5	50.5	100.00
Milenge	89,629	90,120	179,749	49.9	50.1	100.00
Mwense	14,449	14,341	28,790	50.2	49.8	100.00
Nchelenge	52,479	53,280	105,759	49.6	50.4	100.00
Samfya	56,343	54,776	111,119	50.7	49.3	100.00
<b>Total</b>	<b>82,238</b>	<b>81,371</b>	<b>163,609</b>	<b>50.3</b>	<b>49.7</b>	<b>100.00</b>
<b>Lusaka</b>						
Chongwe						100.00
Kafue	70,211	67,250	137,461	51.1	48.9	100.00
Kafue	77,001	73,216	150,217	51.3	48.7	100.00
Luangwa	9,546	9,402	18,948	50.4	49.6	100.00
Lusaka	549,020	535,683	1,084,703	50.6	49.4	100.00
<b>Total</b>	<b>1,093,603</b>	<b>1,073,079</b>	<b>1,391,329</b>	<b>78.6</b>	<b>21.4</b>	<b>100.00</b>
<b>Northern</b>						
Chilubi						100.00
Chilubi	32,936	33,402	66,338	49.6	50.4	100.00
Chinsali	64,362	64,284	128,646	50.0	50.0	100.00
Isoka	49,428	49,891	99,319	49.8	50.2	100.00
Kaputa	44,556	42,677	87,233	51.1	48.9	100.00
Kasama	85,070	85,859	170,929	49.8	50.2	100.00
Luwingu	40,612	40,146	80,758	50.3	49.7	100.00
Mbala	75,085	74,549	149,634	50.2	49.8	100.00
Mpika	73,151	73,045	146,196	50.0	50.0	100.00
Mporokoso	36,975	36,954	73,929	50.0	50.0	100.00
Mpulungu	34,292	33,310	67,602	50.7	49.3	100.00
Mungwi	56,200	56,777	112,977	49.7	50.3	100.00
Nakonde	37,309	37,826	75,135	49.7	50.3	100.00
<b>Total</b>	<b>629,976</b>	<b>628,720</b>	<b>1,258,696</b>	<b>50.0</b>	<b>50.0</b>	<b>100.00</b>
<b>North-Western</b>						
Chavuma						100.00
Chavuma	14,815	15,126	29,941	49.5	50.5	100.00
Kabompo	35,286	35,952	71,238	49.5	50.5	100.00
Kasempa		26,094		49.7	50.3	100.00

	2000		Population Total	Percent Distribution		
	Male	Female		Male	Female	Total
Mufumbwe	25,810		51,904			100.00
Mwinilunga	21,875	22,127	44,002	49.7	50.3	100.00
Solwezi	58,543	58,962	117,505	49.8	50.2	100.00
Zambezi	102,241	101,556	203,797	50.2	49.8	100.00
<b>Total</b>	<b>32,286</b>	<b>32,677</b>	<b>64,963</b>	<b>49.7</b>	<b>50.3</b>	<b>100.00</b>
<b>Total</b>	<b>290,856</b>	<b>292,494</b>	<b>583,350</b>	<b>49.9</b>	<b>50.1</b>	
<b>Southern</b>						
Choma						100.00
Gwembe	100,791	104,107	204,898	49.2	50.8	100.00
Itezhi-tezhi	16,862	17,271	34,133	49.4	50.6	100.00
Kalomo	22,170	20,941	43,111	51.4	48.6	100.00
Kazungula	83,175	86,328	169,503	49.1	50.9	100.00
Livingstone	34,178	34,087	68,265	50.1	49.9	100.00
Mazabuka	51,828	51,460	103,288	50.2	49.8	100.00
Monze	102,585	100,634	203,219	50.5	49.5	100.00
Namwala	80,697	82,881	163,578	49.3	50.7	100.00
Siavonga	40,486	42,324	82,810	48.9	51.1	100.00
Sinazongwe	29,171	29,693	58,864	49.6	50.4	100.00
<b>Total</b>	<b>39,497</b>	<b>40,958</b>	<b>80,455</b>	<b>49.1</b>	<b>50.9</b>	<b>100.00</b>
<b>Total</b>	<b>601,440</b>	<b>610,684</b>	<b>1,212,124</b>	<b>49.6</b>	<b>50.4</b>	
<b>Western</b>						
Kalabo						100.00
Kaoma	54,176	60,630	114,806	47.2	52.8	100.00
Lukulu	79,348	83,220	162,568	48.8	51.2	100.00
Mongu	33,585	34,790	68,375	49.1	50.9	100.00
Senanga	79,300	82,702	162,002	49.0	51.0	100.00
Sesheke	52,587	56,532	109,119	48.2	51.8	100.00
Shang'ombo	39,355	38,814	78,169	50.3	49.7	100.00
<b>Total</b>	<b>33,493</b>	<b>36,556</b>	<b>70,049</b>	<b>47.8</b>	<b>52.2</b>	<b>100.00</b>
<b>Total</b>	<b>371,844</b>	<b>393,244</b>	<b>765,088</b>	<b>48.6</b>	<b>51.4</b>	<b>100.00</b>
<b>Zambia</b>	<b>4,946,298</b>	<b>4,939,293</b>	<b>9,885,591</b>	<b>50.0</b>	<b>50.0</b>	<b>100.00</b>

## Annex 3

### Households and Population Distribution by Province, District, Constituency, and Ward

Province, District, Constituency And Ward	2000 Population			Percent Distribution			
	Households	Males	Females	Total	Males	Females	Total
<b>Central Province</b>	178,820	510,501	501,756	1,012,257	50.43	49.57	100.00
<b>Chibombo District</b>	41,362	121,948	119,664	241,612	50.47	49.53	100.00
<b>Chisamba Constituency</b>	14,870	44,384	42,993	87,377	50.80	49.20	100.00
Chamuka	2,193	6,747	6,423	13,170	51.23	48.77	100.00
Chikonkomene	2,998	9,799	9,689	19,488	50.28	49.72	100.00
Chisamba	3,441	8,698	7,968	16,666	52.19	47.81	100.00
Liteta	2,966	8,830	8,734	17,564	50.27	49.73	100.00
Muswishi	3,298	10,310	10,179	20,489	50.32	49.68	100.00
<b>Katuba Constituency</b>	9,800	28,452	28,176	56,628	50.24	49.76	100.00
Chunga	870	2,446	2,399	4,845	50.49	49.51	100.00
Kabile	2,441	7,383	7,289	14,672	50.32	49.68	100.00
Katuba	1,726	4,875	4,756	9,631	50.62	49.38	100.00
Muchenje	1,288	3,840	3,943	7,783	49.34	50.66	100.00
Mungule	3,475	9,908	9,789	19,697	50.30	49.70	100.00
<b>Keembe Constituency</b>	16,666	49,112	48,495	97,607	50.32	49.68	100.00
Chaloshi	1,410	3,348	2,992	6,340	52.81	47.19	100.00
Chibombo	1,284	3,749	3,638	7,387	50.75	49.25	100.00
Chikobo	820	2,480	2,399	4,879	50.83	49.17	100.00
Chitanda	1,426	4,441	4,355	8,796	50.49	49.51	100.00
Ipongo	1,556	4,585	4,529	9,114	50.31	49.69	100.00
Kakoma	2,618	7,725	7,836	15,561	49.64	50.36	100.00
Kalola	2,140	5,989	5,890	11,879	50.42	49.58	100.00
Keembe	1,305	3,847	3,795	7,642	50.34	49.66	100.00
Lunjofwa	908	3,166	3,246	6,412	49.38	50.62	100.00
Mashikili	3,199	9,782	9,815	19,597	49.92	50.08	100.00
<b>Kabwe District</b>	34,203	89,003	87,755	176,758	50.35	49.65	100.00
<b>Bwacha Constituency</b>	14,456	36,571	35,996	72,567	50.40	49.60	100.00
Ben Kapufi	898	2,361	2,358	4,719	50.03	49.97	100.00
Bwacha	1,568	4,257	4,346	8,603	49.48	50.52	100.00
Chililalila	830	2,021	1,960	3,981	50.77	49.23	100.00
Chimanimani	846	2,213	2,281	4,494	49.24	50.76	100.00
Kang'omba	661	1,623	1,493	3,116	52.09	47.91	100.00
Kawama	1,559	3,831	3,713	7,544	50.78	49.22	100.00
Makululu	632	1,508	1,608	3,116	48.40	51.60	100.00
Moomba	1,904	4,547	4,423	8,970	50.69	49.31	100.00
Munga	770	1,910	1,662	3,572	53.47	46.53	100.00
Munyama	889	2,281	2,165	4,446	51.30	48.70	100.00
Muwowo	1,159	2,982	2,765	5,747	51.89	48.11	100.00
Ngungu	1,096	2,977	3,050	6,027	49.39	50.61	100.00
Zambezi	1,644	4,060	4,172	8,232	49.32	50.68	100.00



Province, District, Constituency And Ward	2000 Population			Percent Distribution			
	Households	Males	Females	Total	Males	Females	Total
<b>Kabwe Constituency</b>	19,747	52,432	51,759	104,191	50.32	49.68	100.00
Chirwa	3,536	8,928	9,203	18,131	49.24	50.76	100.00
David Ramushu	1,142	2,905	2,834	5,739	50.62	49.38	100.00
Highridge	1,528	4,607	4,325	8,932	51.58	48.42	100.00
Justine Kabwe	948	2,688	2,655	5,343	50.31	49.69	100.00
Kalonga	1,706	4,734	4,679	9,413	50.29	49.71	100.00
Kaputula	2,818	7,371	7,153	14,524	50.75	49.25	100.00
Luangwa	3,152	8,170	8,248	16,418	49.76	50.24	100.00
Luansase	190	526	496	1,022	51.47	48.53	100.00
Mpima	1,015	2,839	2,767	5,606	50.64	49.36	100.00
Nakoli	1,677	3,731	3,625	7,356	50.72	49.28	100.00
Njanji	1,042	3,102	3,098	6,200	50.03	49.97	100.00
Waya	993	2,831	2,676	5,507	51.41	48.59	100.00
<b>Kapiri-Mposhi District</b>	35,010	98,558	96,194	194,752	50.61	49.39	100.00
<b>Kapiri-Mposhi Constituency</b>	35,010	98,558	96,194	194,752	50.61	49.39	100.00
Chang'ondo	3,164	9,751	9,471	19,222	50.73	49.27	100.00
Chibwelelo	1,080	2,923	2,839	5,762	50.73	49.27	100.00
Chipepo	4,116	11,185	11,179	22,364	50.01	49.99	100.00
Kakwelesa	3,026	9,499	9,062	18,561	51.18	48.82	100.00
Kampumba	636	2,205	2,169	4,374	50.41	49.59	100.00
Kapiri Mposhi	7,526	19,716	19,366	39,082	50.45	49.55	100.00
Lunchu	4,147	12,425	12,490	24,915	49.87	50.13	100.00
Luanchele	1,507	4,054	4,127	8,181	49.55	50.45	100.00
Mpunde	3,344	9,367	8,939	18,306	51.17	48.83	100.00
Mukubwe	2,381	5,873	5,473	11,346	51.76	48.24	100.00
Mushimbili	3,107	8,984	8,653	17,637	50.94	49.06	100.00
Ngabwe	976	2,576	2,426	5,002	51.50	48.50	100.00
<b>Mkushi District</b>	19,357	54,628	52,810	107,438	50.85	49.15	100.00
<b>Mkushi North Constituency</b>	15,493	42,878	41,515	84,393	50.81	49.19	100.00
Chalata	1,462	3,872	3,725	7,597	50.97	49.03	100.00
Chibefwe	2,499	6,623	6,528	13,151	50.36	49.64	100.00
Chikanda	1,647	5,008	4,856	9,864	50.77	49.23	100.00
Kalwa	244	657	626	1,283	51.21	48.79	100.00
Mushibemba	1,293	3,246	3,024	6,270	51.77	48.23	100.00
Musofu	830	2,462	2,399	4,861	50.65	49.35	100.00
Nkumbi	1,505	4,182	4,143	8,325	50.23	49.77	100.00
Nshinso	2,693	8,065	7,985	16,050	50.25	49.75	100.00
Tembwe	1,536	3,774	3,509	7,283	51.82	48.18	100.00
Upper Lunsemfwa	1,784	4,989	4,720	9,709	51.39	48.61	100.00
<b>Mkushi South Constituency</b>	3,864	11,750	11,295	23,045	50.99	49.01	100.00
Ching'ombe	702	2,077	2,009	4,086	50.83	49.17	100.00
Chipaba	152	420	414	834	50.36	49.64	100.00
Kamimbya	915	2,951	3,047	5,998	49.20	50.80	100.00
Munda	1,807	5,476	4,999	10,475	52.28	47.72	100.00
Mwalala	288	826	826	1,652	50.00	50.00	100.00
<b>Mumbwa District</b>	26,138	79,795	79,066	158,861	50.23	49.77	100.00
<b>Mwembeshi Constituency</b>	6,147	18,631	18,189	36,820	50.60	49.40	100.00

Province, District, Constituency And Ward	2000 Population			Percent Distribution			
	Households	Males	Females	Total	Males	Females	Total
Chabota	663	2,180	2,259	4,439	49.11	50.89	100.00
Kalundu	1,017	3,209	3,089	6,298	50.95	49.05	100.00
Kapyanga	324	1,129	1,057	2,186	51.65	48.35	100.00
Makombwe	986	2,884	2,859	5,743	50.22	49.78	100.00
Milandu	1,525	4,152	3,865	8,017	51.79	48.21	100.00
Nampundwe	1,732	5,077	5,060	10,137	50.08	49.92	100.00
<b>Mumbwa Constituency</b>	11,269	32,812	32,598	65,410	50.16	49.84	100.00
Chibolyo	563	1,580	1,608	3,188	49.56	50.44	100.00
Kalyanyembe	1,463	4,058	3,932	7,990	50.79	49.21	100.00
Mpusu	260	681	605	1,286	52.95	47.05	100.00
Mumbwa	1,695	4,711	4,557	9,268	50.83	49.17	100.00
Mupona	2,747	7,327	7,311	14,638	50.05	49.95	100.00
Nalusanga	1,485	5,203	5,348	10,551	49.31	50.69	100.00
Nambala	603	1,789	1,791	3,580	49.97	50.03	100.00
Shimbizhi	2,453	7,463	7,446	14,909	50.06	49.94	100.00
<b>Nangoma Constituency</b>	8,722	28,352	28,279	56,631	50.06	49.94	100.00
Chisalu	1,995	6,530	6,545	13,075	49.94	50.06	100.00
Choma	649	2,149	2,172	4,321	49.73	50.27	100.00
Myooye	1,039	3,331	3,381	6,712	49.63	50.37	100.00
Nakasa	1,627	5,076	4,987	10,063	50.44	49.56	100.00
Nalubanda	1,334	4,404	4,259	8,663	50.84	49.16	100.00
Nangoma	2,078	6,862	6,935	13,797	49.74	50.26	100.00
<b>Serenje District</b>	22,750	66,569	66,267	132,836	50.11	49.89	100.00
<b>Chitambo Constituency</b>	6,971	20,468	20,318	40,786	50.18	49.82	100.00
Chalilo	1,015	3,358	3,161	6,519	51.51	48.49	100.00
Chipundu	1,079	3,193	3,202	6,395	49.93	50.07	100.00
Chitambo	1,862	5,021	5,125	10,146	49.49	50.51	100.00
Lulimala	988	2,814	2,850	5,664	49.68	50.32	100.00
Luombwa	390	1,391	1,343	2,734	50.88	49.12	100.00
Muchinka	1,648	4,691	4,637	9,328	50.29	49.71	100.00
<b>Muchinga Constituency</b>	7,515	22,273	22,222	44,495	50.06	49.94	100.00
Chibale	1,015	3,045	2,926	5,971	51.00	49.00	100.00
Chisomo	506	1,267	1,334	2,601	48.71	51.29	100.00
Kabansa	108	289	311	600	48.17	51.83	100.00
Kanona	946	3,355	3,179	6,534	51.35	48.65	100.00
Lukusanshi	589	1,708	1,759	3,467	49.26	50.74	100.00
Mailo	1,363	3,650	3,860	7,510	48.60	51.40	100.00
Masaninga	1,880	5,430	5,330	10,760	50.46	49.54	100.00
Sancha	529	1,784	1,780	3,564	50.06	49.94	100.00
Serenje	579	1,745	1,743	3,488	50.03	49.97	100.00
<b>Serenje Constituency</b>	8,247	23,828	23,727	47,555	50.11	49.89	100.00
Ibolelo	3,314	9,032	8,842	17,874	50.53	49.47	100.00
Kabamba	827	2,429	2,486	4,915	49.42	50.58	100.00
Muchinda	1,941	5,727	5,658	11,385	50.30	49.70	100.00
Musangashi	1,190	3,562	3,636	7,198	49.49	50.51	100.00
Ng'answa	975	3,078	3,105	6,183	49.78	50.22	100.00
<b>Copperbelt Province</b>	289,647	799,402	781,819	1,581,221	50.56	49.44	100.00

Province, District, Constituency And Ward	2000 Population			Percent Distribution			
	Households	Males	Females	Total	Males	Females	Total
<b>Chililabombwe District</b>	11,997	34,391	33,142	67,533	50.92	49.08	100.00
<b>Chililabombwe Constituency</b>	11,997	34,391	33,142	67,533	50.92	49.08	100.00
Anoya Zulu	175	619	579	1,198	51.67	48.33	100.00
Chilimina	614	1,427	1,378	2,805	50.87	49.13	100.00
Chitambi	825	1,851	1,582	3,433	53.92	46.08	100.00
Chitimukulu	108	407	352	759	53.62	46.38	100.00
Helen Kaunda	353	1,484	1,472	2,956	50.20	49.80	100.00
James Phiri	945	3,170	3,028	6,198	51.15	48.85	100.00
Joseph Mwila	387	1,062	1,054	2,116	50.19	49.81	100.00
Kafue	670	2,050	1,942	3,992	51.35	48.65	100.00
Kakoso	786	2,120	2,106	4,226	50.17	49.83	100.00
Kamima	384	1,363	1,232	2,595	52.52	47.48	100.00
Kawama	732	1,589	1,517	3,106	51.16	48.84	100.00
Mathew Nkoloma	649	2,281	2,211	4,492	50.78	49.22	100.00
Mukuka	669	1,677	1,756	3,433	48.85	51.15	100.00
Mumba	374	1,103	1,136	2,239	49.26	50.74	100.00
Mvula	386	1,340	1,272	2,612	51.30	48.70	100.00
Nakatindi	2,104	5,564	5,412	10,976	50.69	49.31	100.00
Ngebe	496	1,713	1,567	3,280	52.23	47.77	100.00
Silwizya	449	1,018	1,011	2,029	50.17	49.83	100.00
Yeta	463	1,541	1,468	3,009	51.21	48.79	100.00
Yotamu Muleya	428	1,012	1,067	2,079	48.68	51.32	100.00
<b>Chingola District</b>	29,215	86,928	85,098	172,026	50.53	49.47	100.00
<b>Nchanga Constituency</b>	14,017	36,348	35,554	71,902	50.55	49.45	100.00
Buntungwa	1,414	5,336	5,204	10,540	50.63	49.37	100.00
Kabundi	1,584	5,862	5,601	11,463	51.14	48.86	100.00
Kapisha	4,376	10,995	11,350	22,345	49.21	50.79	100.00
Kasala	504	2,099	2,023	4,122	50.92	49.08	100.00
Kwacha	902	2,734	2,589	5,323	51.36	48.64	100.00
Nchanga	949	2,647	2,331	4,978	53.17	46.83	100.00
Nsansa	1,128	3,960	3,834	7,794	50.81	49.19	100.00
Sekela	764	2,715	2,622	5,337	50.87	49.13	100.00
<b>Chingola Constituency</b>	17,573	50,580	49,544	100,124	50.52	49.48	100.00
Chabanyama	1,178	3,568	3,733	7,301	48.87	51.13	100.00
Chikola	1,030	3,267	3,428	6,695	48.80	51.20	100.00
Chingola	1,218	3,474	3,424	6,898	50.36	49.64	100.00
Chitimukulu	1,060	3,039	3,140	6,179	49.18	50.82	100.00
Chiwempala	1,314	3,830	3,737	7,567	50.61	49.39	100.00
G. Chifwembe	595	1,780	1,706	3,486	51.06	48.94	100.00
Ipafulu	647	1,713	1,561	3,274	52.32	47.68	100.00
Kabungo	1,308	3,463	3,570	7,033	49.24	50.76	100.00
Kalilo	952	2,772	2,449	5,221	53.09	46.91	100.00
Kasompe	686	1,675	1,723	3,398	49.29	50.71	100.00
Lulamba	1,348	5,112	5,009	10,121	50.51	49.49	100.00
Maiteneke	1,041	3,171	3,007	6,178	51.33	48.67	100.00
Mimbula	827	2,437	2,486	4,923	49.50	50.50	100.00
Muchinshi	537	1,348	1,356	2,704	49.85	50.15	100.00
Musenge	1,862	4,507	3,831	8,338	54.05	45.95	100.00
Mutenda	954	2,578	2,461	5,039	51.16	48.84	100.00

Province, District, Constituency And Ward	2000 Population			Percent Distribution			
	Households	Males	Females	Total	Males	Females	Total
Twatasha	1,037	2,846	2,923	5,769	49.33	50.67	100.00
<b>Kalulushi District</b>	13,549	38,786	37,020	75,806	51.16	48.84	100.00
<b>Kalulushi Constituency</b>	13,549	38,786	37,020	75,806	51.16	48.84	100.00
Buseko	536	1,258	1,291	2,549	49.35	50.65	100.00
Chambishi	1,051	4,240	3,910	8,150	52.02	47.98	100.00
Chati	660	2,003	2,090	4,093	48.94	51.06	100.00
Chembe	1,469	4,062	3,645	7,707	52.71	47.29	100.00
Chibuluma	448	985	1,052	2,037	48.36	51.64	100.00
Dongwe	193	655	636	1,291	50.74	49.26	100.00
Ichimpe	553	1,391	1,321	2,712	51.29	48.71	100.00
Kafue	908	2,452	2,446	4,898	50.06	49.94	100.00
Kalanga	1,167	3,543	3,382	6,925	51.16	48.84	100.00
Kalengwa	326	872	923	1,795	48.58	51.42	100.00
Kalungwishi	369	1,145	1,082	2,227	51.41	48.59	100.00
Kankonshi	188	470	542	1,012	46.44	53.56	100.00
Luapula	418	1,282	1,225	2,507	51.14	48.86	100.00
Lubuto	554	1,856	1,849	3,705	50.09	49.91	100.00
Lukoshi	305	753	579	1,332	56.53	43.47	100.00
Lulamba	529	1,526	1,341	2,867	53.23	46.77	100.00
Musakashi	1,792	5,353	5,116	10,469	51.13	48.87	100.00
Mwambashi	836	2,028	1,798	3,826	53.01	46.99	100.00
Ngeshi	487	1,331	1,293	2,624	50.72	49.28	100.00
Remmy Chisupa	760	1,581	1,499	3,080	51.33	48.67	100.00
<b>Kitwe District</b>	65,409	189,650	186,474	376,124	50.42	49.58	100.00
<b>Chimwemwe Constituency</b>	15,217	43,589	44,082	87,671	49.72	50.28	100.00
Buntungwa	2,841	9,023	8,935	17,958	50.25	49.75	100.00
Chimwemwe	2,008	6,264	6,399	12,663	49.47	50.53	100.00
Itimpi	1,777	4,110	4,160	8,270	49.70	50.30	100.00
Kawama	3,115	8,992	8,889	17,881	50.29	49.71	100.00
Lubuto	1,520	5,260	5,419	10,679	49.26	50.74	100.00
Twatasha	3,956	9,940	10,280	20,220	49.16	50.84	100.00
<b>Kamfinsa Constituency</b>	10,150	27,959	27,495	55,454	50.42	49.58	100.00
Bupe	3,482	10,804	10,698	21,502	50.25	49.75	100.00
Kafue	1,185	2,662	2,583	5,245	50.75	49.25	100.00
Kamfinsa	1,354	3,333	3,210	6,543	50.94	49.06	100.00
Ndeke	4,135	11,160	11,004	22,164	50.35	49.65	100.00
<b>Kwacha Constituency</b>	17,534	49,454	48,179	97,633	50.65	49.35	100.00
Bulangililo	3,152	9,365	9,286	18,651	50.21	49.79	100.00
Ipusukilo	4,758	12,278	11,941	24,219	50.70	49.30	100.00
Kwacha	1,992	6,278	6,116	12,394	50.65	49.35	100.00
Lubwa	2,377	6,737	6,437	13,174	51.14	48.86	100.00
Riverside	5,255	14,796	14,399	29,195	50.68	49.32	100.00
<b>Nkana Constituency</b>	11,084	32,725	31,718	64,443	50.78	49.22	100.00
Buchi	2,872	8,665	8,566	17,231	50.29	49.71	100.00
Mindolo	2,408	7,287	6,929	14,216	51.26	48.74	100.00
Miseshi	1,587	5,881	5,585	11,466	51.29	48.71	100.00
Mukuba	1,451	3,871	3,792	7,663	50.52	49.48	100.00

Province, District, Constituency And Ward	2000 Population			Percent Distribution			
	Households	Males	Females	Total	Males	Females	Total
Parklands	1,430	3,551	3,658	7,209	49.26	50.74	100.00
Rokana	1,336	3,470	3,188	6,658	52.12	47.88	100.00
<b>Wusakile Constituency</b>	11,418	35,923	35,000	70,923	50.65	49.35	100.00
Chamboli	2,515	9,750	9,553	19,303	50.51	49.49	100.00
Chibote	1,806	7,014	6,625	13,639	51.43	48.57	100.00
Luangwa	4,295	10,880	10,575	21,455	50.71	49.29	100.00
Wusakile	2,802	8,279	8,247	16,526	50.10	49.90	100.00
<b>Luanshya District</b>	27,239	74,963	72,945	147,908	50.68	49.32	100.00
<b>Luanshya Constituency</b>	15,915	41,089	40,038	81,127	50.65	49.35	100.00
Buntungwa	1,978	4,720	4,663	9,383	50.30	49.70	100.00
Buteko	1,674	4,940	4,733	9,673	51.07	48.93	100.00
Chitwi	538	1,248	1,157	2,405	51.89	48.11	100.00
Fisenge	3,090	7,010	6,432	13,442	52.15	47.85	100.00
James Phiri	677	2,078	2,004	4,082	50.91	49.09	100.00
Levi Chito	1,768	4,564	4,824	9,388	48.62	51.38	100.00
Mikomfwa	1,003	2,901	2,874	5,775	50.23	49.77	100.00
Mipundu	939	2,691	2,657	5,348	50.32	49.68	100.00
Mpelembe	1,146	3,166	3,086	6,252	50.64	49.36	100.00
Twashuka	1,990	4,751	4,679	9,430	50.38	49.62	100.00
Zambezi	1,112	3,020	2,929	5,949	50.76	49.24	100.00
<b>Roan Constituency</b>	11,324	33,874	32,907	66,781	50.72	49.28	100.00
Baluba	530	1,963	1,885	3,848	51.01	48.99	100.00
Chilabula	526	1,144	1,127	2,271	50.37	49.63	100.00
Justine Kabwe	846	2,573	2,470	5,043	51.02	48.98	100.00
Kafubu	540	1,658	1,660	3,318	49.97	50.03	100.00
Kafue	1,756	4,940	4,767	9,707	50.89	49.11	100.00
Kasengu	619	2,510	2,413	4,923	50.99	49.01	100.00
Kawama	735	1,731	1,472	3,203	54.04	45.96	100.00
Lumumba	886	2,552	2,499	5,051	50.52	49.48	100.00
Miluashi	953	2,831	2,776	5,607	50.49	49.51	100.00
Mpatamatu	511	1,588	1,568	3,156	50.32	49.68	100.00
Mulungushi	809	2,282	2,518	4,800	47.54	52.46	100.00
Ngebe	1,218	3,836	3,687	7,523	50.99	49.01	100.00
Nkoloma	461	1,419	1,361	2,780	51.04	48.96	100.00
Nkulumashimba	934	2,847	2,704	5,551	51.29	48.71	100.00
<b>Lufwanyama District</b>	12,932	32,198	30,987	63,185	50.96	49.04	100.00
<b>Lufwanyama Constituency</b>	12,932	32,198	30,987	63,185	248.98	239.61	488.59
Boso	1,386	3,346	3,320	6,666	241.41	239.54	480.95
Bulaya	193	427	356	783	221.24	184.46	405.70
Chibanga	2,428	6,064	5,886	11,950	249.75	242.42	492.17
Kabundia	1,067	2,814	2,811	5,625	263.73	263.45	527.18
Kafubu	1,021	2,505	2,526	5,031	245.35	247.40	492.75
Kansoka	1,038	2,423	2,543	4,966	233.43	244.99	478.42
Lufwanyama	640	1,657	1,615	3,272	258.91	252.34	511.25
Mpindi	513	1,299	1,276	2,575	253.22	248.73	501.95
Mukombo	1,800	4,367	3,563	7,930	242.61	197.94	440.56
Mushingashi	1,542	4,047	4,028	8,075	262.45	261.22	523.67

Province, District, Constituency And Ward	2000 Population			Percent Distribution			
	Households	Males	Females	Total	Males	Females	Total
Mwelushi	369	988	932	1,920	267.75	252.57	520.33
Sokontwe	935	2,261	2,131	4,392	241.82	227.91	469.73

<b>Masaiti District</b>	19,792	48,892	46,689	95,581	51.15	48.85	100.00
<b>Kafulafuta Constituency</b>	6407	14541	13589	28130	51.69	48.31	100.00
Chondwe	632	1,682	1,642	3,324	50.60	49.40	100.00
Ishitwe	415	1,106	995	2,101	52.64	47.36	100.00
Majaliwa	1,629	3,780	3,471	7,251	52.13	47.87	100.00
Mutaba	2,492	6,119	5,740	11,859	51.60	48.40	100.00
Mwatishi	790	1,854	1,741	3,595	51.57	48.43	100.00
<b>Masaiti Constituency</b>	13385	34351	33100	67451	50.93	49.07	100.00
Chilulu	699	1,656	1,625	3,281	50.47	49.53	100.00
Chinondo	2,547	6,433	6,238	12,671	50.77	49.23	100.00
Kashitu	1,939	4,879	4,640	9,519	51.26	48.74	100.00
Katuba	965	2,373	2,168	4,541	52.26	47.74	100.00
Lumano	2,527	5,763	5,525	11,288	51.05	48.95	100.00
Miengwe	449	1,168	1,114	2,282	51.18	48.82	100.00
Miputu	1,213	2,830	2,636	5,466	51.77	48.23	100.00
Mishikishi	2,428	6,073	5,991	12,064	50.34	49.66	100.00
Shimibanga	1,067	3,176	3,163	6,339	50.10	49.90	100.00
<b>Mpongwe District</b>	12,364	32,846	31,525	64,371	51.03	48.97	100.00
<b>Mpongwe Constituency</b>	12,364	32,846	31,525	64,371	51.03	48.97	100.00
Chowa	3,179	8,333	7,937	16,270	51.22	48.78	100.00
Ibenga	2,331	6,364	6,115	12,479	51.00	49.00	100.00
Ipumbu	299	793	750	1,543	51.39	48.61	100.00
Kalweo	606	1,723	1,711	3,434	50.17	49.83	100.00
Kanyenda	1,415	3,747	3,610	7,357	50.93	49.07	100.00
Kasamba	356	883	888	1,771	49.86	50.14	100.00
Kashiba	361	951	1,015	1,966	48.37	51.63	100.00
Kasonga	459	1,359	1,322	2,681	50.69	49.31	100.00
Mpongwe	757	2,008	1,915	3,923	51.19	48.81	100.00
Munkumpu	2,264	5,731	5,369	11,100	51.63	48.37	100.00
Musofu	337	954	893	1,847	51.65	48.35	100.00
<b>Mfulira District</b>	26,097	72,526	71,404	143,930	50.39	49.61	100.00
<b>Kankoyo Constituency</b>	7,565	20,655	20,181	40,836	50.58	49.42	100.00
Buntungwa	648	1,841	1,835	3,676	50.08	49.92	100.00
Butondo	973	3,271	3,038	6,309	51.85	48.15	100.00
Fibusu	1,390	3,900	3,946	7,846	49.71	50.29	100.00
John Kampengele	842	2,269	2,230	4,499	50.43	49.57	100.00
Kwacha	1,038	3,317	3,315	6,632	50.02	49.98	100.00
Lwansobe	1,434	3,026	2,914	5,940	50.94	49.06	100.00
Minambe	802	1,807	1,807	3,614	50.00	50.00	100.00
Mpelempe	438	1,224	1,096	2,320	52.76	47.24	100.00

Province, District, Constituency And Ward	2000 Population			Percent Distribution			
	Households	Males	Females	Total	Males	Females	Total
<b>Kantanshi Constituency</b>	9,504	28,285	27,224	55,509	50.96	49.04	100.00
Bwafwano	668	1,722	1,680	3,402	50.62	49.38	100.00
Bwembya Silwizya	394	1,585	1,567	3,152	50.29	49.71	100.00
David Kaunda	874	2,496	2,445	4,941	50.52	49.48	100.00
Francis Mukuka	864	2,484	2,349	4,833	51.40	48.60	100.00
Maina Soko	914	2,439	2,520	4,959	49.18	50.82	100.00
Mulungushi	1,261	4,657	4,436	9,093	51.22	48.78	100.00
Murundu	1,465	3,455	3,224	6,679	51.73	48.27	100.00
Mutundu	882	2,210	1,966	4,176	52.92	47.08	100.00
Shinde	2,182	7,237	7,037	14,274	50.70	49.30	100.00
<b>Mufulira Constituency</b>	9,028	23,586	23,999	47,585	49.57	50.43	100.00
Bwananyina	2,254	5,376	5,480	10,856	49.52	50.48	100.00
Chachacha	1,219	3,571	3,353	6,924	51.57	48.43	100.00
Hanky Kalanga	1,849	4,503	4,635	9,138	49.28	50.72	100.00
Kafue	147	406	368	774	52.45	47.55	100.00
Kamuchanga	1,319	3,762	4,168	7,930	47.44	52.56	100.00
Kansuswa	864	2,175	2,262	4,437	49.02	50.98	100.00
Kasempa	760	2,224	2,312	4,536	49.03	50.97	100.00
Kawama	615	1,569	1,421	2,990	52.47	47.53	100.00
<b>Ndola District</b>	71,053	188,222	186,535	374,757	50.23	49.77	100.00
<b>Bwana Mkubwa Constituency</b>	19,998	52,117	51,078	103,195	50.50	49.50	100.00
Chichele	5,644	14,821	14,804	29,625	50.03	49.97	100.00
Itawa	3,621	10,126	9,941	20,067	50.46	49.54	100.00
Kantolomba	1,448	3,568	3,609	7,177	49.71	50.29	100.00
Kavu	1,022	2,348	2,278	4,626	50.76	49.24	100.00
Munkulungwe	3,415	7,911	7,292	15,203	52.04	47.96	100.00
Mushili	4,848	13,343	13,154	26,497	50.36	49.64	100.00
<b>Chifubu Constituency</b>	13,552	38,462	38,180	76,642	50.18	49.82	100.00
Chifubu	2,089	6,256	6,340	12,596	49.67	50.33	100.00
Fibobe	2,042	5,996	5,949	11,945	50.20	49.80	100.00
Kamba	2,188	6,530	6,225	12,755	51.20	48.80	100.00
Kawama	2,800	7,338	7,349	14,687	49.96	50.04	100.00
Pamodzi	4,433	12,342	12,317	24,659	50.05	49.95	100.00
<b>Kabushi Constituency</b>	14,318	41,164	41,627	82,791	49.72	50.28	100.00
Kabushi	1,460	4,327	4,363	8,690	49.79	50.21	100.00
Kafubu	2,146	6,228	6,133	12,361	50.38	49.62	100.00
Kaloko	1,258	3,699	3,706	7,405	49.95	50.05	100.00
Lubuto	3,970	11,304	11,441	22,745	49.70	50.30	100.00
Masala	1,459	4,236	4,306	8,542	49.59	50.41	100.00
Mukuba	1,641	4,276	4,376	8,652	49.42	50.58	100.00
Skyways	1,248	3,525	3,613	7,138	49.38	50.62	100.00
Toka	1,136	3,569	3,689	7,258	49.17	50.83	100.00
<b>Ndola Central Constituency</b>	23,185	56,479	55,650	112,129	50.37	49.63	100.00
Chipulukusu	6,879	15,877	15,348	31,225	50.85	49.15	100.00
Kanini	2,548	5,943	5,906	11,849	50.16	49.84	100.00
Kanseshi	3,246	9,430	9,577	19,007	49.61	50.39	100.00
Nkwazi	2,514	5,778	5,561	11,339	50.96	49.04	100.00
Twapia	5,866	13,975	13,793	27,768	50.33	49.67	100.00
Yengwe	2,132	5,476	5,465	10,941	50.05	49.95	100.00

Province, District, Constituency And Ward	2000 Population			Percent Distribution			
	Households	Males	Females	Total	Males	Females	Total
<b>Eastern Province</b>	254,603	648,676	657,497	1,306,173	49.66	50.34	100.00
<b>Chadiza District</b>	15,928	42,204	41,777	83,981	50.25	49.75	100.00
<b>Chadiza Constituency</b>	9,609	25,819	25,848	51,667	49.97	50.03	100.00
Ambidzi	482	1,164	1,158	2,322	50.13	49.87	100.00
Chadiza	1,331	3,774	3,757	7,531	50.11	49.89	100.00
Chamandala	741	1,889	1,917	3,806	49.63	50.37	100.00
Chilenga	720	1,837	1,939	3,776	48.65	51.35	100.00
Kampini	584	1,448	1,486	2,934	49.35	50.65	100.00
Kandabwako	570	1,654	1,602	3,256	50.80	49.20	100.00
Mangwe	1,327	3,852	3,718	7,570	50.89	49.11	100.00
Manje	1,481	4,098	4,126	8,224	49.83	50.17	100.00
Naviluri	1,118	2,747	2,771	5,518	49.78	50.22	100.00
Nsadzu	595	1,781	1,812	3,593	49.57	50.43	100.00
Taferansoni	660	1,575	1,562	3,137	50.21	49.79	100.00
<b>Vubwi Constituency</b>	6,317	16,385	15,929	32,314	50.71	49.29	100.00
Chadzombe	630	1,611	1,502	3,113	51.75	48.25	100.00
Chisiya	742	1,892	1,761	3,653	51.79	48.21	100.00
Dzodwe	597	1,421	1,405	2,826	50.28	49.72	100.00
Kabvumo	370	1,007	1,024	2,031	49.58	50.42	100.00
Khumba	644	1,682	1,715	3,397	49.51	50.49	100.00
Mbozi	599	1,585	1,533	3,118	50.83	49.17	100.00
Mlawe	577	1,395	1,321	2,716	51.36	48.64	100.00
Mwangazi	892	2,422	2,418	4,840	50.04	49.96	100.00
Vumbwi	1,268	3,370	3,250	6,620	50.91	49.09	100.00
<b>Chama District</b>	14,397	37,025	37,865	74,890	49.44	50.56	100.00
<b>Chama North Constituency</b>	7,624	19,231	19,333	38,564	49.87	50.13	100.00
Chisunga	350	801	790	1,591	50.35	49.65	100.00
Kalinkhu	466	1,184	1,228	2,412	49.09	50.91	100.00
Kamphemba	1,604	4,229	4,230	8,459	49.99	50.01	100.00
Luangwa	1,263	3,109	3,154	6,263	49.64	50.36	100.00
Manthepa	555	1,447	1,408	2,855	50.68	49.32	100.00
Mazonde	205	575	564	1,139	50.48	49.52	100.00
Mbazi	447	1,070	1,004	2,074	51.59	48.41	100.00
Mphalansenga	388	961	937	1,898	50.63	49.37	100.00
Muchinga	958	2,399	2,364	4,763	50.37	49.63	100.00
Mwalala	490	1,328	1,427	2,755	48.20	51.80	100.00
Ndunda	898	2,128	2,227	4,355	48.86	51.14	100.00
<b>Chama South Constituency</b>	6,773	17,794	18,532	36,326	48.98	51.02	100.00
Bazimu	1,243	3,193	3,199	6,392	49.95	50.05	100.00
Chibungwe	304	1,133	1,147	2,280	49.69	50.31	100.00
Chilenje	735	1,835	1,959	3,794	48.37	51.63	100.00
Chipala	134	344	368	712	48.31	51.69	100.00
Lumezi	741	1,984	2,214	4,198	47.26	52.74	100.00
Lunzi	1,126	2,963	3,127	6,090	48.65	51.35	100.00
Mabinga	948	2,666	2,708	5,374	49.61	50.39	100.00



Province, District, Constituency And Ward	2000 Population			Percent Distribution			
	Households	Males	Females	Total	Males	Females	Total
Mapamba	764	1,734	1,802	3,536	49.04	50.96	100.00
Vilimukulu	778	1,942	2,008	3,950	49.16	50.84	100.00
<b>Chipata District</b>	<b>70,347</b>	<b>183,352</b>	<b>184,187</b>	<b>367,539</b>	<b>49.89</b>	<b>50.11</b>	<b>100.00</b>
<b>Chipangali Constituency</b>	<b>19,310</b>	<b>50,723</b>	<b>49,910</b>	<b>100,633</b>	<b>50.40</b>	<b>49.60</b>	<b>100.00</b>
Chipangali	2,650	7,755	7,531	15,286	50.73	49.27	100.00
Kasenga	2,660	7,002	6,741	13,743	50.95	49.05	100.00
Msandile	5,091	12,107	11,916	24,023	50.40	49.60	100.00
Nthope	2,643	7,648	7,510	15,158	50.46	49.54	100.00
Rukuzye	3,286	8,155	8,106	16,261	50.15	49.85	100.00
Sisinje	2,980	8,056	8,106	16,162	49.85	50.15	100.00
<b>Chipata Constituency</b>	<b>21,959</b>	<b>59,047</b>	<b>58,295</b>	<b>117,342</b>	<b>50.32</b>	<b>49.68</b>	<b>100.00</b>
Dilika	8,198	21,843	21,398	43,241	50.51	49.49	100.00
Kanjala	4,302	11,419	11,075	22,494	50.76	49.24	100.00
Msanga	9,459	25,785	25,822	51,607	49.96	50.04	100.00
<b>Kasenengwa Constituency</b>	<b>15,967</b>	<b>39,696</b>	<b>41,422</b>	<b>81,118</b>	<b>48.94</b>	<b>51.06</b>	<b>100.00</b>
Chingazi	1,975	4,932	5,100	10,032	49.16	50.84	100.00
Chiparamba	1,563	3,875	4,117	7,992	48.49	51.51	100.00
Kwenje	4,466	11,449	11,992	23,441	48.84	51.16	100.00
Makungwa	2,989	6,863	7,048	13,911	49.34	50.66	100.00
Mboza	2,589	6,960	7,201	14,161	49.15	50.85	100.00
Ngongwe	2,384	5,617	5,964	11,581	48.50	51.50	100.00
<b>Luangeni Constituency</b>	<b>13,111</b>	<b>33,886</b>	<b>34,560</b>	<b>68,446</b>	<b>49.51</b>	<b>50.49</b>	<b>100.00</b>
Chikando	2,345	6,276	6,481	12,757	49.20	50.80	100.00
Kazimule	1,156	3,172	3,031	6,203	51.14	48.86	100.00
Makangila	1,948	4,711	4,794	9,505	49.56	50.44	100.00
Mkhova	3,575	9,068	9,494	18,562	48.85	51.15	100.00
Nsingo	4,087	10,659	10,760	21,419	49.76	50.24	100.00
<b>Katete District</b>	<b>38,387</b>	<b>94,148</b>	<b>95,102</b>	<b>189,250</b>	<b>49.75</b>	<b>50.25</b>	<b>100.00</b>
<b>Milanzi Constituency</b>	<b>9,616</b>	<b>24,395</b>	<b>24,248</b>	<b>48,643</b>	<b>50.15</b>	<b>49.85</b>	<b>100.00</b>
Chindwale	820	1,995	2,017	4,012	49.73	50.27	100.00
Chimwa	283	684	761	1,445	47.34	52.66	100.00
Dole	1,111	2,670	2,769	5,439	49.09	50.91	100.00
Kafumbwe	1,365	3,090	3,152	6,242	49.50	50.50	100.00
Kapangulula	1,668	4,073	4,082	8,155	49.94	50.06	100.00
Kapoche	394	940	945	1,885	49.87	50.13	100.00
Kazala	1,336	4,095	3,788	7,883	51.95	48.05	100.00
Milanzi	953	2,276	2,233	4,509	50.48	49.52	100.00
Mwandafisi	1,686	4,572	4,501	9,073	50.39	49.61	100.00
<b>Mkaika Constituency</b>	<b>15,068</b>	<b>37,422</b>	<b>37,847</b>	<b>75,269</b>	<b>49.72</b>	<b>50.28</b>	<b>100.00</b>
Chavuka	3,006	6,877	6,877	13,754	50.00	50.00	100.00
Chimtende	2,472	6,234	6,249	12,483	49.94	50.06	100.00
Kadula	1,311	3,169	3,291	6,460	49.06	50.94	100.00
Matunga	1,188	2,922	2,915	5,837	50.06	49.94	100.00
Mkaika	2,466	6,025	6,135	12,160	49.55	50.45	100.00
Mphangwe	2,912	7,991	8,155	16,146	49.49	50.51	100.00
Vulamkolo	1,713	4,204	4,225	8,429	49.88	50.12	100.00
<b>Sinda Constituency</b>	<b>13,703</b>	<b>32,331</b>	<b>33,007</b>	<b>65,338</b>	<b>49.48</b>	<b>50.52</b>	<b>100.00</b>

Province, District, Constituency And Ward	2000 Population			Percent Distribution			
	Households	Males	Females	Total	Males	Females	Total
Chiwuyu	1,673	3,814	3,962	7,776	49.05	50.95	100.00
Kamwaza	1,367	3,209	3,339	6,548	49.01	50.99	100.00
Kasangazi	1,849	4,384	4,469	8,853	49.52	50.48	100.00
Luandazi	1,319	3,012	3,007	6,019	50.04	49.96	100.00
Mng'omba	1,718	4,028	4,132	8,160	49.36	50.64	100.00
Mnyamazi	1,019	2,295	2,276	4,571	50.21	49.79	100.00
Nchingilizya	920	2,095	2,170	4,265	49.12	50.88	100.00
Nyamasonkho	1,712	4,193	4,260	8,453	49.60	50.40	100.00
Sinda	2,126	5,301	5,392	10,693	49.57	50.43	100.00
<b>Lundazi District</b>	<b>46,178</b>	<b>117,277</b>	<b>119,556</b>	<b>236,833</b>	<b>49.52</b>	<b>50.48</b>	<b>100.00</b>
<b>Chasefu Constituency</b>	<b>14,468</b>	<b>37,794</b>	<b>38,714</b>	<b>76,508</b>	<b>49.40</b>	<b>50.60</b>	<b>100.00</b>
Chaboli	1,365	3,133	3,160	6,293	49.79	50.21	100.00
Kajilime	1,913	5,500	5,730	11,230	48.98	51.02	100.00
Kapilinsanga	1,695	3,887	4,115	8,002	48.58	51.42	100.00
Luwerezi	679	1,863	1,905	3,768	49.44	50.56	100.00
Magodi	2,708	7,450	7,687	15,137	49.22	50.78	100.00
Manda Hill	801	2,220	2,212	4,432	50.09	49.91	100.00
Membe	703	1,853	1,941	3,794	48.84	51.16	100.00
Nkhanga	3,123	7,617	7,559	15,176	50.19	49.81	100.00
Susa	1,481	4,271	4,405	8,676	49.23	50.77	100.00
<b>Lumezi Constituency</b>	<b>12,541</b>	<b>32,041</b>	<b>32,557</b>	<b>64,598</b>	<b>49.60</b>	<b>50.40</b>	<b>100.00</b>
Chamtonga	2,949	8,015	7,965	15,980	50.16	49.84	100.00
Chibande	1,444	3,002	3,130	6,132	48.96	51.04	100.00
Diwa	2,472	7,421	7,230	14,651	50.65	49.35	100.00
Kamimba	1,842	4,691	4,855	9,546	49.14	50.86	100.00
Kazembe	903	2,087	2,236	4,323	48.28	51.72	100.00
Lukusuzi	544	1,205	1,260	2,465	48.88	51.12	100.00
Lumimba	1,316	3,033	3,221	6,254	48.50	51.50	100.00
Wachitangati	1,071	2,587	2,660	5,247	49.30	50.70	100.00
<b>Lundazi Constituency</b>	<b>19,169</b>	<b>47,442</b>	<b>48,285</b>	<b>95,727</b>	<b>49.56</b>	<b>50.44</b>	<b>100.00</b>
Chilola	1,612	3,652	3,686	7,338	49.77	50.23	100.00
Chimaliro	1,653	4,155	4,265	8,420	49.35	50.65	100.00
Lunewa	2,159	5,051	5,440	10,491	48.15	51.85	100.00
Mnyamazi	4,502	11,739	11,671	23,410	50.15	49.85	100.00
Msuzi	2,813	7,305	7,435	14,740	49.56	50.44	100.00
Ndonda	1,494	3,466	3,609	7,075	48.99	51.01	100.00
Nthitimila	1,879	4,732	4,864	9,596	49.31	50.69	100.00
Vuu	3,057	7,342	7,315	14,657	50.09	49.91	100.00
<b>Mambwe District</b>	<b>9,578</b>	<b>23,699</b>	<b>23,677</b>	<b>47,376</b>	<b>50.02</b>	<b>49.98</b>	<b>100.00</b>
<b>Malambo Constituency</b>	<b>9,578</b>	<b>23,699</b>	<b>23,677</b>	<b>47,376</b>	<b>50.02</b>	<b>49.98</b>	<b>100.00</b>
Chikowa	293	695	699	1,394	49.86	50.14	100.00
Chipapa	522	1,241	1,284	2,525	49.15	50.85	100.00
Jumbe	941	2,434	2,407	4,841	50.28	49.72	100.00
Kakumbi	1,119	2,812	2,737	5,549	50.68	49.32	100.00
Kasamanda	831	2,172	2,045	4,217	51.51	48.49	100.00
Malama	227	490	491	981	49.95	50.05	100.00
Mnkhanya	2,285	5,626	5,698	11,324	49.68	50.32	100.00
Mphomwa	175	524	507	1,031	50.82	49.18	100.00
Msoro	168	474	443	917	51.69	48.31	100.00

Province, District, Constituency And Ward	2000 Population			Percent Distribution			
	Households	Males	Females	Total	Males	Females	Total
Ncheke	865	2,146	2,253	4,399	48.78	51.22	100.00
Ndima	1,184	2,917	2,945	5,862	49.76	50.24	100.00
Nsefu	964	2,168	2,168	4,336	50.00	50.00	100.00
<b>Nyimba District</b>	<b>13,201</b>	<b>34,824</b>	<b>35,601</b>	<b>70,425</b>	<b>49.45</b>	<b>50.55</b>	<b>100.00</b>
<b>Nyimba Constituency</b>	<b>13,201</b>	<b>34,824</b>	<b>35,601</b>	<b>70,425</b>	<b>49.45</b>	<b>50.55</b>	<b>100.00</b>
Chamilala	754	1,850	1,849	3,699	50.01	49.99	100.00
Chinambi	1,099	2,981	3,101	6,082	49.01	50.99	100.00
Chinsumbwe	271	720	668	1,388	51.87	48.13	100.00
Chiweza	1,152	3,236	3,188	6,424	50.37	49.63	100.00
Kaliwe	1,123	2,952	3,015	5,967	49.47	50.53	100.00
Katipa	348	890	860	1,750	50.86	49.14	100.00
Luangwa	423	1,176	1,214	2,390	49.21	50.79	100.00
Lwezi	1,429	3,763	3,727	7,490	50.24	49.76	100.00
Mombe	857	2,049	2,062	4,111	49.84	50.16	100.00
Ngozi	2,205	5,767	6,065	11,832	48.74	51.26	100.00
Nyimba	1,231	3,513	3,761	7,274	48.30	51.70	100.00
Vizimumda	2,307	5,927	6,091	12,018	49.32	50.68	100.00
<b>Petauke District</b>	<b>46,587</b>	<b>116,147</b>	<b>119,732</b>	<b>235,879</b>	<b>49.24</b>	<b>50.76</b>	<b>100.00</b>
<b>Kapoche Constituency</b>	<b>18,886</b>	<b>46,092</b>	<b>48,303</b>	<b>94,395</b>	<b>48.83</b>	<b>51.17</b>	<b>100.00</b>
Chingombe	2,570	6,040	6,584	12,624	47.85	52.15	100.00
Kapoche	1,496	3,359	3,643	7,002	47.97	52.03	100.00
Kaumbwe	3,340	8,198	8,599	16,797	48.81	51.19	100.00
Manjazi	2,882	7,100	7,549	14,649	48.47	51.53	100.00
Manyane	2,443	6,267	6,401	12,668	49.47	50.53	100.00
Mtambazi	3,117	7,936	8,190	16,126	49.21	50.79	100.00
Mwangaila	3,038	7,192	7,337	14,529	49.50	50.50	100.00
<b>Petauke Constituency</b>	<b>18,564</b>	<b>47,182</b>	<b>48,637</b>	<b>95,819</b>	<b>49.24</b>	<b>50.76</b>	<b>100.00</b>
Chililanyama	3,265	7,906	8,115	16,021	49.35	50.65	100.00
Kovyane	1,921	4,624	4,812	9,436	49.00	51.00	100.00
Mbala	2,052	5,004	5,341	10,345	48.37	51.63	100.00
Msumbazi	2,798	7,211	7,337	14,548	49.57	50.43	100.00
Nsimbo	1,158	3,479	3,494	6,973	49.89	50.11	100.00
Nyika	4,998	13,268	13,516	26,784	49.54	50.46	100.00
Ongolwe	2,372	5,690	6,022	11,712	48.58	51.42	100.00
<b>Msanzala Constituency</b>	<b>9,137</b>	<b>22,873</b>	<b>22,792</b>	<b>45,665</b>	<b>50.09</b>	<b>49.91</b>	<b>100.00</b>
Chisangu	2,258	5,865	5,608	11,473	51.12	48.88	100.00
Lusangazi	431	1,118	1,115	2,233	50.07	49.93	100.00
Mateyo Mzeka	1,544	3,730	3,755	7,485	49.83	50.17	100.00
Mawanda	1,631	3,803	3,883	7,686	49.48	50.52	100.00
Nyakawise	1,655	4,438	4,424	8,862	50.08	49.92	100.00
Singozi	1,618	3,919	4,007	7,926	49.44	50.56	100.00
<b>Luapula Province</b>	<b>164,739</b>	<b>387,825</b>	<b>387,528</b>	<b>775,353</b>	<b>50.02</b>	<b>49.98</b>	<b>100.00</b>
<b>Chienge District</b>	<b>18,681</b>	<b>41,979</b>	<b>41,845</b>	<b>83,824</b>	<b>50.08</b>	<b>49.92</b>	<b>100.00</b>
<b>Chienge Constituency</b>	<b>18,681</b>	<b>41,979</b>	<b>41,845</b>	<b>83,824</b>	<b>50.08</b>	<b>49.92</b>	<b>100.00</b>
Chienge	1,701	3,784	3,780	7,564	50.03	49.97	100.00
Chipamba	1,125	2,631	2,612	5,243	50.18	49.82	100.00
Chipungu	2,975	6,277	6,062	12,339	50.87	49.13	100.00

Province, District, Constituency And Ward	2000 Population			Percent Distribution			
	Households	Males	Females	Total	Males	Females	Total
Chitutu	879	1,965	1,994	3,959	49.63	50.37	100.00
Ifuna	1,297	2,997	3,021	6,018	49.80	50.20	100.00
Kalobwa	1,929	4,436	4,340	8,776	50.55	49.45	100.00
Kalungwishi	1,635	3,584	3,707	7,291	49.16	50.84	100.00
Kantete	1,399	3,344	3,390	6,734	49.66	50.34	100.00
Lambwe Chomba	1,774	3,906	4,060	7,966	49.03	50.97	100.00
Mununga	1,942	4,644	4,645	9,289	49.99	50.01	100.00
Munwa	1,184	2,702	2,550	5,252	51.45	48.55	100.00
Mwabu	841	1,709	1,684	3,393	50.37	49.63	100.00

<b>Kawambwa District</b>	21,451	50,708	51,795	102,503	49.47	50.53	100.00
<b>Kawambwa Constituency</b>	7,077	17,563	17,920	35,483	49.50	50.50	100.00
Fisaka	600	1,377	1,428	2,805	49.09	50.91	100.00
Iyanga	720	1,791	1,776	3,567	50.21	49.79	100.00
Kawambwa	1,195	2,676	2,829	5,505	48.61	51.39	100.00
Luenana	1,009	2,629	2,588	5,217	50.39	49.61	100.00
Ng'ona	2,061	5,384	5,544	10,928	49.27	50.73	100.00
Ntumbachushi	374	884	881	1,765	50.08	49.92	100.00
Senga	1,118	2,822	2,874	5,696	49.54	50.46	100.00

<b>Mwansabombwe Constituency</b>	8,014	17,546	18,000	35,546	49.36	50.64	100.00
Chipita	1,107	2,344	2,431	4,775	49.09	50.91	100.00
Kayo	599	1,326	1,343	2,669	49.68	50.32	100.00
Lufubu	1,187	2,688	2,500	5,188	51.81	48.19	100.00
Mbereshi	992	2,347	2,350	4,697	49.97	50.03	100.00
Mulele	1,326	2,842	3,050	5,892	48.23	51.77	100.00
Mununshi	847	1,919	2,054	3,973	48.30	51.70	100.00
Mwansabombwe	1,956	4,080	4,272	8,352	48.85	51.15	100.00

<b>Pambashe Constituency</b>	6,360	15,599	15,875	31,474	49.56	50.44	100.00
Chibote	490	1,224	1,221	2,445	50.06	49.94	100.00
Ilombe	1,911	4,590	4,793	9,383	48.92	51.08	100.00
Kabanse	1,054	2,592	2,589	5,181	50.03	49.97	100.00
Luongo	835	2,212	2,133	4,345	50.91	49.09	100.00
Mulunda	1,690	4,076	4,248	8,324	48.97	51.03	100.00
Pambashe	380	905	891	1,796	50.39	49.61	100.00

<b>Mansa District</b>	36,634	89,629	90,120	179,749	49.86	50.14	100.00
<b>Bahati Constituency</b>	14,207	34,390	34,582	68,972	49.86	50.14	100.00
Kaole	4,620	11,389	11,686	23,075	49.36	50.64	100.00
Katangashi	1,079	2,244	2,266	4,510	49.76	50.24	100.00
Mansa	1,176	2,927	2,868	5,795	50.51	49.49	100.00
Misakalala	1,798	4,344	4,309	8,653	50.20	49.80	100.00
Mushipashi	872	2,064	2,048	4,112	50.19	49.81	100.00
Mutuna	2,378	6,088	6,091	12,179	49.99	50.01	100.00
Myulu	2,284	5,334	5,314	10,648	50.09	49.91	100.00

<b>Chembe Constituency</b>	22,427	55,239	55,538	110,777	49.87	50.13	100.00
----------------------------	--------	--------	--------	---------	-------	-------	--------

Province, District, Constituency And Ward	2000 Population			Percent Distribution			
	Households	Males	Females	Total	Males	Females	Total
Chansunsu	3,230	7,329	7,465	14,794	49.54	50.46	100.00
Chibeleka	2,359	5,737	5,771	11,508	49.85	50.15	100.00
Chilyapa	3,120	8,795	8,741	17,536	50.15	49.85	100.00
Luapula	4,080	9,883	10,234	20,117	49.13	50.87	100.00
Lukangaba	3,047	7,117	7,196	14,313	49.72	50.28	100.00
Lwingishi	2,162	5,339	5,236	10,575	50.49	49.51	100.00
Muchinka	2,536	6,529	6,412	12,941	50.45	49.55	100.00
Mukenshi	1,893	4,510	4,483	8,993	50.15	49.85	100.00
<b>Milenge District</b>	<b>5,762</b>	<b>14,449</b>	<b>14,341</b>	<b>28,790</b>	<b>50.19</b>	<b>49.81</b>	<b>100.00</b>
<b>Mansa Constituency</b>	<b>5,762</b>	<b>14,449</b>	<b>14,341</b>	<b>28,790</b>	<b>50.19</b>	<b>49.81</b>	<b>100.00</b>
Chipungu	51	236	257	493	47.87	52.13	100.00
Chiswishi	297	708	685	1,393	50.83	49.17	100.00
Fibalala	439	1,104	1,105	2,209	49.98	50.02	100.00
Itemba	943	2,231	2,229	4,460	50.02	49.98	100.00
Kapalala	249	613	592	1,205	50.87	49.13	100.00
Mikula	1,212	3,354	3,261	6,615	50.70	49.30	100.00
Milambo	680	1,576	1,637	3,213	49.05	50.95	100.00
Mulumbi	495	1,217	1,209	2,426	50.16	49.84	100.00
Mumbotuta	443	1,115	1,080	2,195	50.80	49.20	100.00
Nsaka	148	408	357	765	53.33	46.67	100.00
Nsunga	258	584	613	1,197	48.79	51.21	100.00
Sokontwe	547	1,303	1,316	2,619	49.75	50.25	100.00
<b>Mwense District</b>	<b>22,746</b>	<b>52,479</b>	<b>53,280</b>	<b>105,759</b>	<b>49.62</b>	<b>50.38</b>	<b>100.00</b>
<b>Chipili Constituency</b>	<b>5,618</b>	<b>13,769</b>	<b>13,620</b>	<b>27,389</b>	<b>50.27</b>	<b>49.73</b>	<b>100.00</b>
Chibalashi	1,037	2,430	2,478	4,908	49.51	50.49	100.00
Mumbwe	781	1,954	1,883	3,837	50.93	49.07	100.00
Nalupembe	1,344	3,428	3,387	6,815	50.30	49.70	100.00
Nkonge	1000	2,427	2,379	4,806	50.50	49.50	100.00
Nsenga	1,456	3,530	3,493	7,023	50.26	49.74	100.00
<b>Mambilima Constituency</b>	<b>6,793</b>	<b>15,498</b>	<b>15,570</b>	<b>31,068</b>	<b>49.88</b>	<b>50.12</b>	<b>100.00</b>
Chibembe	726	2,098	1,970	4,068	51.57	48.43	100.00
Kalanga	1,316	2,970	2,978	5,948	49.93	50.07	100.00
Mambilima	1,257	2,596	2,731	5,327	48.73	51.27	100.00
Mpasa	495	1,174	1,119	2,293	51.20	48.80	100.00
Munwa	366	707	806	1,513	46.73	53.27	100.00
Musonda	1,278	3,102	3,007	6,109	50.78	49.22	100.00
Nsomfi	1,355	2,851	2,959	5,810	49.07	50.93	100.00
<b>Mwense Constituency</b>	<b>10,335</b>	<b>23,212</b>	<b>24,090</b>	<b>47,302</b>	<b>49.07</b>	<b>50.93</b>	<b>100.00</b>
Chachacha	875	2,118	2,050	4,168	50.82	49.18	100.00
Kaombe	883	2,012	2,110	4,122	48.81	51.19	100.00
Kapela	1,323	2,893	3,060	5,953	48.60	51.40	100.00
Kasengu	1,294	3,085	3,230	6,315	48.85	51.15	100.00
Katiti	1,121	2,420	2,550	4,970	48.69	51.31	100.00
Luche	1,999	4,359	4,516	8,875	49.12	50.88	100.00
Nkanga	1,667	3,668	3,828	7,496	48.93	51.07	100.00
Pebkabesa	1,173	2,657	2,746	5,403	49.18	50.82	100.00

Province, District, Constituency And Ward	2000 Population			Percent Distribution			
	Households	Males	Females	Total	Males	Females	Total
<b>Nchelenge District</b>	24,369	56,343	54,776	111,119	50.71	49.29	100.00
<b>Nchelenge Constituency</b>	24,369	56,343	54,776	111,119	50.71	49.29	100.00
Chisenga	2,318	5,053	4,638	9,691	52.14	47.86	100.00
Kabuta	3,589	8,768	8,655	17,423	50.32	49.68	100.00
Kasamba	2,222	4,931	4,974	9,905	49.78	50.22	100.00
Kashikishi	4,282	9,955	9,819	19,774	50.34	49.66	100.00
Katofyo	1,661	3,715	3,775	7,490	49.60	50.40	100.00
Kilwa	1,713	3,606	3,429	7,035	51.26	48.74	100.00
Mofwe	973	2,352	2,238	4,590	51.24	48.76	100.00
Mulwe	1,568	3,659	3,641	7,300	50.12	49.88	100.00
Munkombwe	215	535	496	1,031	51.89	48.11	100.00
Mwatishi	2,657	6,215	5,937	12,152	51.14	48.86	100.00
Nchelenge	1,671	3,929	3,710	7,639	51.43	48.57	100.00
Shabo	1,500	3,625	3,464	7,089	51.14	48.86	100.00
<b>Samfya District</b>	35,096	82,238	81,371	163,609	50.26	49.74	100.00
<b>Bangweulu Constituency</b>	15,932	37,990	38,013	76,003	49.98	50.02	100.00
Chimana	4,725	11,687	11,672	23,359	50.03	49.97	100.00
Isamba	858	1,989	1,996	3,985	49.91	50.09	100.00
Kapata	2,842	6,566	6,434	13,000	50.51	49.49	100.00
Katanshya	2,079	4,412	4,708	9,120	48.38	51.62	100.00
Lumanya	2,751	6,862	6,826	13,688	50.13	49.87	100.00
Mano	1,071	2,357	2,442	4,799	49.11	50.89	100.00
Musaba	1,606	4,117	3,935	8,052	51.13	48.87	100.00
<b>Chifunabuli Constituency</b>	14,640	34,274	34,254	68,528	50.01	49.99	100.00
Chifunabuli	2,319	5,562	5,342	10,904	51.01	48.99	100.00
Chinkutila	1,581	3,393	3,533	6,926	48.99	51.01	100.00
Chishi	753	1,850	1,976	3,826	48.35	51.65	100.00
Kafumbo	1,772	4,203	4,005	8,208	51.21	48.79	100.00
Kapamba	1,092	2,499	2,511	5,010	49.88	50.12	100.00
Kasansa	2,893	6,843	7,113	13,956	49.03	50.97	100.00
Kasongole	2,194	4,944	4,943	9,887	50.01	49.99	100.00
Masonde	1,280	3,188	3,246	6,434	49.55	50.45	100.00
Mbabala	756	1,792	1,585	3,377	53.06	46.94	100.00
<b>Luapula Constituency</b>	4,524	9,974	9,104	19,078	52.28	47.72	100.00
Lunga	940	1,888	1,955	3,843	49.13	50.87	100.00
Ncheta	1,033	2,527	2,106	4,633	54.54	45.46	100.00
Nkutila	1,666	3,560	3,200	6,760	52.66	47.34	100.00
Nsalushi	885	1,999	1,843	3,842	52.03	47.97	100.00
<b>Lusaka Province</b>	272,094	705,778	685,551	1,391,329	50.73	49.27	100.00
<b>Chongwe District</b>	23,786	70,211	67,250	137,461	51.08	48.92	100.00
<b>Chongwe Constituency</b>	17,389	51,351	48,930	100,281	51.21	48.79	100.00
Chinkuli	1,177	4,640	4,358	8,998	51.57	48.43	100.00
Chongwe	3,181	8,627	8,602	17,229	50.07	49.93	100.00
Kanakantapa	2,149	6,609	6,669	13,278	49.77	50.23	100.00

Province, District, Constituency And Ward	2000 Population				Percent Distribution		
	Households	Males	Females	Total	Males	Females	Total
Kapwayambale	1,772	4,642	4,218	8,860	52.39	47.61	100.00
Lukoshi	2,653	7,862	6,955	14,817	53.06	46.94	100.00
Lwimba	618	1,914	1,919	3,833	49.93	50.07	100.00
Manyika	1,774	5,102	5,021	10,123	50.40	49.60	100.00
Nakatindi	1,011	3,095	2,801	5,896	52.49	47.51	100.00
Ntandabale	3,054	8,860	8,387	17,247	51.37	48.63	100.00
<b>Rufunsa Constituency</b>	6,397	18,860	18,320	37,180	50.73	49.27	100.00
Bunda Bunda	1,271	3,608	3,432	7,040	51.25	48.75	100.00
Mankanda	837	2,056	2,030	4,086	50.32	49.68	100.00
Mwachilele	1,324	4,442	4,243	8,685	51.15	48.85	100.00
Nyangwena	901	2,754	2,520	5,274	52.22	47.78	100.00
Rufunsa	1,799	5,245	5,353	10,598	49.49	50.51	100.00
Shikabeta	265	755	742	1,497	50.43	49.57	100.00
<b>Kafue District</b>	29,311	77,001	73,216	150,217	51.26	48.74	100.00
<b>Kafue Constituency</b>	17,832	47,817	45,727	93,544	51.12	48.88	100.00
Chikupi	1,243	3,338	2,824	6,162	54.17	45.83	100.00
Chiyaba	538	1,432	1,249	2,681	53.41	46.59	100.00
Kafue	1,760	4,726	4,634	9,360	50.49	49.51	100.00
Kambale	964	2,293	2,026	4,319	53.09	46.91	100.00
Kasenje	7,111	19,042	18,748	37,790	50.39	49.61	100.00
Lukolongo	611	1,568	1,430	2,998	52.30	47.70	100.00
Malundu	3,193	8,670	8,142	16,812	51.57	48.43	100.00
Matanda	1,291	3,731	3,641	7,372	50.61	49.39	100.00
Mungu	1,121	3,017	3,033	6,050	49.87	50.13	100.00
<b>Chilanga Constituency</b>	11,479	29,184	27,489	56,673	51.50	48.50	100.00
Chilanga	1,231	3,277	3,266	6,543	50.08	49.92	100.00
Chilongolo	2,500	6,215	5,788	12,003	51.78	48.22	100.00
Chinyanja	1,244	3,586	3,515	7,101	50.50	49.50	100.00
Nakachenje	2,270	5,465	4,995	10,460	52.25	47.75	100.00
Namalombwe	2,539	6,242	5,763	12,005	52.00	48.00	100.00
Nyemba	1,695	4,399	4,162	8,561	51.38	48.62	100.00
<b>Luangwa District</b>	3,681	9,546	9,402	18,948	50.38	49.62	100.00
<b>Feira Constituency</b>	3,681	9,546	9,402	18,948	50.38	49.62	100.00
Chikoma	302	775	746	1,521	50.95	49.05	100.00
Chiriwe	165	461	440	901	51.17	48.83	100.00
Dzalo	540	1,517	1,389	2,906	52.20	47.80	100.00
Kabawo	20	52	55	107	48.60	51.40	100.00
Kapoche	349	883	877	1,760	50.17	49.83	100.00
Katondwe	321	911	900	1,811	50.30	49.70	100.00
Kaunga	262	631	652	1,283	49.18	50.82	100.00
Lunya	126	330	291	621	53.14	46.86	100.00
Mandombe	194	480	472	952	50.42	49.58	100.00
Mankhokwe	196	530	516	1,046	50.67	49.33	100.00
Mburuma	310	820	787	1,607	51.03	48.97	100.00
Mkaliva	131	312	323	635	49.13	50.87	100.00
Mphuka	232	567	611	1,178	48.13	51.87	100.00
Mwalilia	346	843	887	1,730	48.73	51.27	100.00
Phwazi	187	434	456	890	48.76	51.24	100.00
<b>Lusaka District</b>	215,316	549,020	535,683	1,084,703	50.61	49.39	100.00

Province, District, Constituency And Ward	2000 Population			Percent Distribution			
	Households	Males	Females	Total	Males	Females	Total
<b>Chawama Constituency</b>	28,750	71,436	68,562	139,998	51.03	48.97	100.00
Chawama	11,985	30,163	29,422	59,585	50.62	49.38	100.00
Lilayi	6,287	15,886	15,245	31,131	51.03	48.97	100.00
Nkoloma	10,478	25,387	23,895	49,282	51.51	48.49	100.00
<b>Kabwata Constituency</b>	15,844	44,495	45,061	89,556	49.68	50.32	100.00
Chilenje	5,655	16,585	16,772	33,357	49.72	50.28	100.00
Kabwata	3,655	9,970	10,459	20,429	48.80	51.20	100.00
Kamwala	4,801	13,113	12,724	25,837	50.75	49.25	100.00
Libala	1,733	4,827	5,106	9,933	48.60	51.40	100.00
<b>Kanyama Constituency</b>	37,594	87,618	83,185	170,803	51.30	48.70	100.00
Harry Mwaanga	17,075	40,415	38,960	79,375	50.92	49.08	100.00
Kanyama	15,775	35,767	33,249	69,016	51.82	48.18	100.00
Munkolo	4,744	11,436	10,976	22,412	51.03	48.97	100.00
<b>Lusaka Central Constituency</b>	19,344	49,489	49,942	99,431	49.77	50.23	100.00
Independence	3,956	9,649	10,133	19,782	48.78	51.22	100.00
Kabulonga	7,784	19,545	18,967	38,512	50.75	49.25	100.00
Lubwa	6,059	16,414	16,977	33,391	49.16	50.84	100.00
Silwizya	1,545	3,881	3,865	7,746	50.10	49.90	100.00
<b>Matero Constituency</b>	35,868	96,131	93,349	189,480	50.73	49.27	100.00
Kapwepwe	7,180	19,518	19,092	38,610	50.55	49.45	100.00
Lima	10,076	25,042	24,133	49,175	50.92	49.08	100.00
Matero	7,779	20,837	20,568	41,405	50.32	49.68	100.00
Muchinga	4,959	14,635	14,258	28,893	50.65	49.35	100.00
Mwembeshi	5,874	16,099	15,298	31,397	51.28	48.72	100.00
<b>Munali Constituency</b>	34,280	88,226	87,924	176,150	50.09	49.91	100.00
Chainda	4,650	11,649	11,651	23,300	50.00	50.00	100.00
Chakunkula	3,747	10,204	10,205	20,409	50.00	50.00	100.00
Kalingalinga	6,475	15,706	16,374	32,080	48.96	51.04	100.00
Mtendere	12,271	31,184	30,507	61,691	50.55	49.45	100.00
Munali	7,137	19,483	19,187	38,670	50.38	49.62	100.00
<b>Mandevu Constituency</b>	43,636	111,625	107,660	219,285	50.90	49.10	100.00
Chaisa	3,902	9,248	8,730	17,978	51.44	48.56	100.00
Justine Kabwe	6,710	16,668	16,555	33,223	50.17	49.83	100.00
Mulungushi	1,590	4,143	3,959	8,102	51.14	48.86	100.00
Ngwerere	9,826	26,001	25,217	51,218	50.77	49.23	100.00
Raphael Chota	14,370	37,331	35,977	73,308	50.92	49.08	100.00
Roma	7,238	18,234	17,222	35,456	51.43	48.57	100.00
<b>Northern Province</b>	258,887	629,976	628,720	1,258,696	50.05	49.95	100.00
<b>Chilubi District</b>	14,341	32,936	33,402	66,338	49.65	50.35	100.00
<b>Chilubi Constituency</b>	14,341	32,936	33,402	66,338	49.65	50.35	100.00
Bulilo	837	1,912	2,003	3,915	48.84	51.16	100.00
Bumba	762	1,982	2,070	4,052	48.91	51.09	100.00
Chifwenge	887	2,161	2,128	4,289	50.38	49.62	100.00
Chiloba	963	2,225	2,276	4,501	49.43	50.57	100.00
Chinkundu	824	1,876	1,909	3,785	49.56	50.44	100.00
Chisupa	691	1,788	1,750	3,538	50.54	49.46	100.00
Kambashi	679	1,447	1,583	3,030	47.76	52.24	100.00
Kanana	542	1,252	1,258	2,510	49.88	50.12	100.00
Kanchindi	551	1,227	1,207	2,434	50.41	49.59	100.00



Province, District, Constituency And Ward	2000 Population			Percent Distribution			
	Households	Males	Females	Total	Males	Females	Total
Kapoka	504	1,100	1,034	2,134	51.55	48.45	100.00
Kashitu	705	1,533	1,572	3,105	49.37	50.63	100.00
Katamba	1,192	2,843	2,901	5,744	49.50	50.50	100.00
Kawena	623	1,188	1,226	2,414	49.21	50.79	100.00
Luangwa	456	942	878	1,820	51.76	48.24	100.00
Mofu	849	1,858	2,038	3,896	47.69	52.31	100.00
Mpanshya	714	1,731	1,826	3,557	48.66	51.34	100.00
Mubemba	476	1,063	1,046	2,109	50.40	49.60	100.00
Mulanda	787	1,834	1,802	3,636	50.44	49.56	100.00
Muteka	499	976	1,045	2,021	48.29	51.71	100.00
Ndela	800	1,998	1,850	3,848	51.92	48.08	100.00
<b>Chinsali District</b>	<b>25,274</b>	<b>64,362</b>	<b>64,284</b>	<b>128,646</b>	<b>50.03</b>	<b>49.97</b>	<b>100.00</b>
<b>Chinsali Constituency</b>	<b>14,207</b>	<b>37,259</b>	<b>36,780</b>	<b>74,039</b>	<b>50.32</b>	<b>49.68</b>	<b>100.00</b>
Chilinda	1,699	4,836	4,652	9,488	50.97	49.03	100.00
Chilunda	325	906	917	1,823	49.70	50.30	100.00
Chipanga	1,047	3,697	3,515	7,212	51.26	48.74	100.00
Ichinga	3,404	9,116	9,199	18,315	49.77	50.23	100.00
Itapa	2,382	6,382	6,213	12,595	50.67	49.33	100.00
Kaunga	1,759	4,032	3,967	7,999	50.41	49.59	100.00
Lubwa	1,795	4,163	4,130	8,293	50.20	49.80	100.00
Luko	243	520	549	1,069	48.64	51.36	100.00
Malalo	474	1,091	1,120	2,211	49.34	50.66	100.00
Munwakubili	1,079	2,516	2,518	5,034	49.98	50.02	100.00
<b>Shiwangandu Constituency</b>	<b>11,067</b>	<b>27,103</b>	<b>27,504</b>	<b>54,607</b>	<b>49.63</b>	<b>50.37</b>	<b>100.00</b>
Chamusenga	1,031	2,530	2,537	5,067	49.93	50.07	100.00
Chandaula	924	2,147	2,167	4,314	49.77	50.23	100.00
Chibanda	2,517	6,300	6,443	12,743	49.44	50.56	100.00
Chimpandu	1,380	3,227	3,296	6,523	49.47	50.53	100.00
Ichingo	971	2,352	2,478	4,830	48.70	51.30	100.00
Makumbi	560	1,534	1,575	3,109	49.34	50.66	100.00
Mayembe	488	1,317	1,402	2,719	48.44	51.56	100.00
Muchinga	1,335	3,363	3,313	6,676	50.37	49.63	100.00
Mwiche	590	1,427	1,346	2,773	51.46	48.54	100.00
Nkulungwe	1,271	2,906	2,947	5,853	49.65	50.35	100.00
<b>Isoka District</b>	<b>19,223</b>	<b>49,428</b>	<b>49,891</b>	<b>99,319</b>	<b>49.77</b>	<b>50.23</b>	<b>100.00</b>
<b>Isoka East Constituency</b>	<b>7,865</b>	<b>20,846</b>	<b>21,234</b>	<b>42,080</b>	<b>49.54</b>	<b>50.46</b>	<b>100.00</b>
Kakoma	1,044	2,598	2,602	5,200	49.96	50.04	100.00
Kalanga	1,439	3,819	3,811	7,630	50.05	49.95	100.00
Luhoka	517	1,315	1,383	2,698	48.74	51.26	100.00
Mafinga	733	1,800	1,773	3,573	50.38	49.62	100.00
Mukutu	1,225	3,148	3,208	6,356	49.53	50.47	100.00
Ntonga	1,030	3,086	3,269	6,355	48.56	51.44	100.00
Thendere	1,877	5,080	5,188	10,268	49.47	50.53	100.00
<b>Isoka West Constituency</b>	<b>11,358</b>	<b>28,582</b>	<b>28,657</b>	<b>57,239</b>	<b>49.93</b>	<b>50.07</b>	<b>57,239</b>
Kantenshya	1,058	2,725	2,686	5,411	50.36	49.64	5,411
Kapililonga	1,427	3,644	3,669	7,313	49.83	50.17	7,313
Kasoka	2,250	5,689	5,784	11,473	49.59	50.41	11,473
Luangwa	647	1,565	1,579	3,144	49.78	50.22	3,144
Milongo	1,648	4,140	3,986	8,126	50.95	49.05	8,126
Mpungu	1,513	3,702	3,663	7,365	50.26	49.74	7,365
Nkombwa	907	2,263	2,279	4,542	49.82	50.18	4,542
Sansamwenje	1,908	4,854	5,011	9,865	49.20	50.80	9,865

Province, District, Constituency And Ward	2000 Population			Percent Distribution			
	Households	Males	Females	Total	Males	Females	Total
<b>Kaputa District</b>	18,520	44,556	42,677	87,233	51.08	48.92	100.00
<b>Chimbamilonga Constituency</b>	9,041	21,582	20,763	42,345	50.97	49.03	100.00
Chishela	510	1,281	1,226	2,507	51.10	48.90	100.00
Chubo	443	1,142	1,043	2,185	52.27	47.73	100.00
Fungwa	653	1,630	1,608	3,238	50.34	49.66	100.00
Kakusu	604	1,605	1,473	3,078	52.14	47.86	100.00
Kampinda	1,141	2,771	2,803	5,574	49.71	50.29	100.00
Kashikishi	905	2,175	1,901	4,076	53.36	46.64	100.00
Mukubwe	778	1,717	1,804	3,521	48.76	51.24	100.00
Munwa	1,586	3,683	3,489	7,172	51.35	48.65	100.00
Mwambeshi	326	853	810	1,663	51.29	48.71	100.00
Nsumbu	2,093	4,725	4,606	9,331	50.64	49.36	100.00
<b>Kaputa Constituency</b>	9,479	22,974	21,914	44,888	51.18	48.82	100.00
Chipili	1,577	4,142	3,604	7,746	53.47	46.53	100.00
Chiyilunda	528	1,267	1,199	2,466	51.38	48.62	100.00
Choma	415	1,197	1,154	2,351	50.91	49.09	100.00
Kaleulu	1,905	4,402	4,408	8,810	49.97	50.03	100.00
Kalungwishi	590	1,419	1,461	2,880	49.27	50.73	100.00
Mofwe	216	558	512	1,070	52.15	47.85	100.00
Mowa	481	1,010	955	1,965	51.40	48.60	100.00
Munkonge	1,347	3,137	3,017	6,154	50.97	49.03	100.00
Mwawe	1,111	2,652	2,582	5,234	50.67	49.33	100.00
Nkota	1,307	3,190	3,022	6,212	51.35	48.65	100.00
<b>Kasama District</b>	35,020	85,070	85,859	170,929	49.77	50.23	100.00
<b>Kasama Constituency</b>	17,202	43,389	43,983	87,372	49.66	50.34	100.00
Bululu	2,854	6,665	6,678	13,343	49.95	50.05	100.00
Buseko	1,301	3,600	3,604	7,204	49.97	50.03	100.00
Chilunga	2,120	4,733	4,735	9,468	49.99	50.01	100.00
Kasenga	1,725	4,128	4,136	8,264	49.95	50.05	100.00
Lukulu	900	2,188	2,194	4,382	49.93	50.07	100.00
Lukupapa	2,067	4,796	4,989	9,785	49.01	50.99	100.00
Mulilansolo	6,235	17,279	17,647	34,926	49.47	50.53	100.00
<b>Lukasha Constituency</b>	17,818	41,681	41,876	83,557	49.88	50.12	100.00
Chiba	3,052	6,770	6,844	13,614	49.73	50.27	100.00
Chibundu	1,845	4,219	4,147	8,366	50.43	49.57	100.00
Chumbu	791	1,748	1,895	3,643	47.98	52.02	100.00
Kapolongolo	5,693	13,630	13,714	27,344	49.85	50.15	100.00
Lualuo	2,343	5,477	5,542	11,019	49.71	50.29	100.00
Lusenga	1,787	4,284	4,306	8,590	49.87	50.13	100.00
Mukanga	1,514	3,698	3,672	7,370	50.18	49.82	100.00
Musowa	793	1,855	1,756	3,611	51.37	48.63	100.00
<b>Luwingu District</b>	16,877	40,612	40,146	80,758	50.29	49.71	100.00
<b>Lubansenshi Constituency</b>	6,927	17,513	17,348	34,861	50.24	49.76	100.00
Chifwele	651	1,570	1,498	3,068	51.17	48.83	100.00
Chulungoma	2,196	6,237	6,215	12,452	50.09	49.91	100.00
Ipusukilo	706	1,655	1,732	3,387	48.86	51.14	100.00
Isangano	595	1,202	1,277	2,479	48.49	51.51	100.00
Lwata	688	1,595	1,516	3,111	51.27	48.73	100.00
Masonde	726	1,893	1,840	3,733	50.71	49.29	100.00
Mushitu Wambo	598	1,499	1,385	2,884	51.98	48.02	100.00

Province, District, Constituency And Ward	2000 Population			Percent Distribution			
	Households	Males	Females	Total	Males	Females	Total
Namukolo	767	1,862	1,885	3,747	49.69	50.31	100.00
<b>Lupoposhi Constituency</b>	9,950	23,099	22,798	45,897	50.33	49.67	100.00
Bwalinde	1,231	2,542	2,527	5,069	50.15	49.85	100.00
Ibale	348	682	606	1,288	52.95	47.05	100.00
Ilambo	639	1,197	1,304	2,501	47.86	52.14	100.00
Isansa	858	1,881	1,918	3,799	49.51	50.49	100.00
Itandashi	1,007	2,264	2,307	4,571	49.53	50.47	100.00
Kaela	641	1,556	1,366	2,922	53.25	46.75	100.00
Kampemba	654	1,670	1,563	3,233	51.65	48.35	100.00
Kanfinsa	828	1,738	1,678	3,416	50.88	49.12	100.00
Katilye	350	905	910	1,815	49.86	50.14	100.00
Mufili	1,395	4,102	4,060	8,162	50.26	49.74	100.00
Munshinga	580	1,363	1,313	2,676	50.93	49.07	100.00
Mwelawamanu	1,419	3,199	3,246	6,445	49.64	50.36	100.00
<b>Mbala District</b>	30,585	75,085	74,549	149,634	50.18	49.82	100.00
<b>Mbala Constituency</b>	16,546	40,652	40,384	81,036	50.17	49.83	100.00
Intala	3,899	9,102	9,043	18,145	50.16	49.84	100.00
Kawimbe	2,679	6,931	6,989	13,920	49.79	50.21	100.00
Lwandi	2,955	7,125	7,087	14,212	50.13	49.87	100.00
Moto Moto	3,465	8,630	8,557	17,187	50.21	49.79	100.00
Mwambezi	1,675	4,407	4,358	8,765	50.28	49.72	100.00
Nsunzu	1,873	4,457	4,350	8,807	50.61	49.39	100.00
<b>Senga Hill Constituency</b>	14,039	34,433	34,165	68,598	50.20	49.80	100.00
Chela	1,970	4,571	4,704	9,275	49.28	50.72	100.00
Chimbili	1,675	3,947	3,868	7,815	50.51	49.49	100.00
Chinyika	1,321	3,157	3,106	6,263	50.41	49.59	100.00
Chipembe	960	2,288	2,337	4,625	49.47	50.53	100.00
Chози	1,345	3,582	3,464	7,046	50.84	49.16	100.00
Lapisha	1,670	4,275	4,143	8,418	50.78	49.22	100.00
Malamba	1,306	3,306	3,190	6,496	50.89	49.11	100.00
Mukololo	2,114	5,160	5,157	10,317	50.01	49.99	100.00
Mwiluzi	1,678	4,147	4,196	8,343	49.71	50.29	100.00
<b>Mpika District</b>	30,027	73,151	73,045	146,196	50.04	49.96	100.00
<b>Kachibiya Constituency</b>	11,753	26,863	27,266	54,129	49.63	50.37	100.00
Chambeshi	1,748	4,207	4,203	8,410	50.02	49.98	100.00
Chawama	633	1,492	1,532	3,024	49.34	50.66	100.00
Chibwa	1,030	2,476	2,405	4,881	50.73	49.27	100.00
Lubaleshi	1,842	4,378	4,247	8,625	50.76	49.24	100.00
Lukulu	1,604	3,653	3,739	7,392	49.42	50.58	100.00
Lulimala	1,159	2,929	3,086	6,015	48.69	51.31	100.00
Lulingila	1,395	2,459	2,799	5,258	46.77	53.23	100.00
Mumbubu	1,438	3,348	3,352	6,700	49.97	50.03	100.00
Munikashi	904	1,921	1,903	3,824	50.24	49.76	100.00
<b>Mfuwe Constituency</b>	6,907	16,878	16,612	33,490	50.40	49.60	100.00
Chifungwe	759	1,612	1,653	3,265	49.37	50.63	100.00
Chikanda	1,463	3,781	3,790	7,571	49.94	50.06	100.00
Chipembele	1,318	3,343	3,293	6,636	50.38	49.62	100.00
Muchinga	683	1,435	1,486	2,921	49.13	50.87	100.00
Mupamadzi	1,901	4,648	4,435	9,083	51.17	48.83	100.00
Mutekwe	783	2,059	1,955	4,014	51.30	48.70	100.00

Province, District, Constituency And Ward	2000 Population			Percent Distribution			
	Households	Males	Females	Total	Males	Females	Total
<b>Mpika Constituency</b>	11,367	29,410	29,167	58,577	50.21	49.79	100.00
Kanchibiya	915	2,253	2,192	4,445	50.69	49.31	100.00
Lubambala	2,337	6,727	6,632	13,359	50.36	49.64	100.00
Lwitikila	1,911	4,801	4,763	9,564	50.20	49.80	100.00
Musakanya	2,283	6,186	6,308	12,494	49.51	50.49	100.00
Nachikufu	3,921	9,443	9,272	18,715	50.46	49.54	100.00
<b>Mporokoso District</b>	14,897	36,975	36,954	73,929	50.01	49.99	100.00
<b>Lunte Constituency</b>	8,640	21,324	21,108	42,432	50.25	49.75	100.00
Isenga	800	2,026	2,000	4,026	50.32	49.68	100.00
Kalungwishi	1,020	2,411	2,349	4,760	50.65	49.35	100.00
Kansanshi	765	1,919	1,954	3,873	49.55	50.45	100.00
Kanyanta	633	1,538	1,634	3,172	48.49	51.51	100.00
Luangwa	454	1,223	1,167	2,390	51.17	48.83	100.00
Lubushi	634	1,451	1,485	2,936	49.42	50.58	100.00
Lunte	836	2,082	2,096	4,178	49.83	50.17	100.00
Malaila	746	1,758	1,755	3,513	50.04	49.96	100.00
Malambwa	391	1,004	942	1,946	51.59	48.41	100.00
Musonde	1,161	2,971	2,816	5,787	51.34	48.66	100.00
Nchelenge	1,200	2,941	2,910	5,851	50.26	49.74	100.00
<b>Mporokoso Constituency</b>	6,257	15,651	15,846	31,497	49.69	50.31	100.00
Chikulu	349	972	987	1,959	49.62	50.38	100.00
Chimpolongo	591	1,470	1,464	2,934	50.10	49.90	100.00
Chisha Mwamba	1,365	3,284	3,305	6,589	49.84	50.16	100.00
Kapumo	513	1,070	1,150	2,220	48.20	51.80	100.00
Lumangwe	844	2,158	2,185	4,343	49.69	50.31	100.00
Mabale	1,097	2,828	2,783	5,611	50.40	49.60	100.00
Mikomba	500	1,465	1,520	2,985	49.08	50.92	100.00
Mumbuluma	425	1,090	1,037	2,127	51.25	48.75	100.00
Mutotoshi	573	1,314	1,415	2,729	48.15	51.85	100.00
<b>Mpulungu District</b>	14,467	34,292	33,310	67,602	50.73	49.27	100.00
<b>Mpulungu Constituency</b>	14,467	34,292	33,310	67,602	50.73	49.27	100.00
Chibulula	1,865	4,145	4,094	8,239	50.31	49.69	100.00
Chilumba	46	79	80	159	49.69	50.31	100.00
Chisha	1,531	4,007	3,763	7,770	51.57	48.43	100.00
Isoko	1,843	4,021	3,823	7,844	51.26	48.74	100.00
Isunga	440	1,020	1,057	2,077	49.11	50.89	100.00
Itumbwe	181	949	855	1,804	52.61	47.39	100.00
Iyendwe	710	1,477	1,494	2,971	49.71	50.29	100.00
Kapembwa	313	725	633	1,358	53.39	46.61	100.00
Katwe	342	800	825	1,625	49.23	50.77	100.00
Mpulungu	4,853	11,189	11,169	22,358	50.04	49.96	100.00
Mumila	692	1,751	1,654	3,405	51.42	48.58	100.00
Vyamba	1,650	4,129	3,863	7,992	51.66	48.34	100.00
<b>Mungwi District</b>	24,351	56,200	56,777	112,977	49.74	50.26	100.00
<b>Malole Constituency</b>	24,351	56,200	56,777	112,977	49.74	50.26	100.00
Chafubu	3,094	7,006	7,054	14,060	49.83	50.17	100.00
Chambeshi	1,576	3,565	3,558	7,123	50.05	49.95	100.00
Fibwe	1,952	4,846	4,718	9,564	50.67	49.33	100.00
Fube	2,445	5,819	5,863	11,682	49.81	50.19	100.00

Province, District, Constituency And Ward	2000 Population			Percent Distribution			
	Households	Males	Females	Total	Males	Females	Total
Iyaya	1,691	3,716	3,864	7,580	49.02	50.98	100.00
Kabisha	1,801	4,029	4,167	8,196	49.16	50.84	100.00
Kalungu	2,856	6,395	6,512	12,907	49.55	50.45	100.00
Lubala	2,070	4,884	4,798	9,682	50.44	49.56	100.00
Mfinshe	1,021	2,302	2,323	4,625	49.77	50.23	100.00
Mpanda	1,950	4,409	4,476	8,885	49.62	50.38	100.00
Mungwi	2,369	5,907	6,064	11,971	49.34	50.66	100.00
Ngulula	1,526	3,322	3,380	6,702	49.57	50.43	100.00
<b>Nakonde District</b>	<b>15,305</b>	<b>37,309</b>	<b>37,826</b>	<b>75,135</b>	<b>49.66</b>	<b>50.34</b>	<b>100.00</b>
<b>Nakonde Constituency</b>	<b>15,305</b>	<b>37,309</b>	<b>37,826</b>	<b>75,135</b>	<b>49.66</b>	<b>50.34</b>	<b>100.00</b>
Chiwanza	1,019	2,562	2,702	5,264	48.67	51.33	100.00
Ilonda	758	2,062	2,110	4,172	49.42	50.58	100.00
Isunda	1,183	2,936	2,807	5,743	51.12	48.88	100.00
Luchinde	1,094	2,824	2,973	5,797	48.71	51.29	100.00
Mpande	1,210	3,019	3,103	6,122	49.31	50.69	100.00
Mukulika	454	1,141	1,137	2,278	50.09	49.91	100.00
Mulalo	1,288	3,359	3,402	6,761	49.68	50.32	100.00
Musele	746	1,899	1,968	3,867	49.11	50.89	100.00
Musyani	1,190	2,971	2,915	5,886	50.48	49.52	100.00
Nakonde	4,376	9,671	9,757	19,428	49.78	50.22	100.00
Ngumba	985	2,360	2,322	4,682	50.41	49.59	100.00
Popomozi	1,002	2,505	2,630	5,135	48.78	51.22	100.00
<b>North-Western Province</b>	<b>111,133</b>	<b>290,856</b>	<b>292,494</b>	<b>583,350</b>	<b>49.86</b>	<b>50.14</b>	<b>100.00</b>
<b>Chavuma District</b>	<b>6,298</b>	<b>14,815</b>	<b>15,126</b>	<b>29,941</b>	<b>49.48</b>	<b>50.52</b>	<b>100.00</b>
<b>Chavuma Constituency</b>	<b>6,298</b>	<b>14,815</b>	<b>15,126</b>	<b>29,941</b>	<b>49.48</b>	<b>50.52</b>	<b>100.00</b>
Chambi Mandalo	284	648	638	1,286	50.39	49.61	100.00
Chavuma	1,330	3,209	3,513	6,722	47.74	52.26	100.00
Chibombo Mbalanga	336	830	821	1,651	50.27	49.73	100.00
Chiyeke Kakoma	1,225	2,835	2,949	5,784	49.01	50.99	100.00
Kalombo Kamusamba	807	1,703	1,676	3,379	50.40	49.60	100.00
Kambuya Mukelangombe	213	551	559	1,110	49.64	50.36	100.00
Kanyinda Likundu	164	370	355	725	51.03	48.97	100.00
Lingelengenda	334	771	785	1,556	49.55	50.45	100.00
Lukolwe Musanga	374	913	866	1,779	51.32	48.68	100.00
Nguvu	213	445	479	924	48.16	51.84	100.00
Nyantanda Nyambongila	357	971	998	1,969	49.31	50.69	100.00
Sanjongo	661	1,569	1,487	3,056	51.34	48.66	100.00
<b>Kabompo District</b>	<b>14,029</b>	<b>35,286</b>	<b>35,952</b>	<b>71,238</b>	<b>49.53</b>	<b>50.47</b>	<b>100.00</b>
<b>Kabompo East Constituency</b>	<b>7,287</b>	<b>18,223</b>	<b>18,539</b>	<b>36,762</b>	<b>49.57</b>	<b>50.43</b>	<b>100.00</b>
Chiteve	137	312	280	592	52.70	47.30	100.00
Dihamba	286	665	735	1,400	47.50	52.50	100.00
Kashinakaji	200	586	549	1,135	51.63	48.37	100.00
Kaula	2,347	5,938	5,932	11,870	50.03	49.97	100.00
Kawanda	1,296	3,176	3,189	6,365	49.90	50.10	100.00
Loloma	2,173	5,276	5,493	10,769	48.99	51.01	100.00
Lusongwa	552	1,617	1,694	3,311	48.84	51.16	100.00
Manyinga	296	653	667	1,320	49.47	50.53	100.00

Province, District, Constituency And Ward	2000 Population			Percent Distribution			
	Households	Males	Females	Total	Males	Females	Total
<b>Kabompo West Constituency</b>	6,742	17,063	17,413	34,476	49.49	50.51	100.00
Chikenge	281	690	665	1,355	50.92	49.08	100.00
Chikonkwelo	322	730	726	1,456	50.14	49.86	100.00
Kabompo	1,647	4,530	4,617	9,147	49.52	50.48	100.00
Kabulamema	671	1,734	1,739	3,473	49.93	50.07	100.00
Kamafwafwa	444	1,051	1,128	2,179	48.23	51.77	100.00
Kamisombo	770	1,986	2,010	3,996	49.70	50.30	100.00
Katuva	179	519	517	1,036	50.10	49.90	100.00
Kayombo	301	834	844	1,678	49.70	50.30	100.00
Lubi	456	1,080	1,062	2,142	50.42	49.58	100.00
Lunyiwe	426	1,023	1,087	2,110	48.48	51.52	100.00
Maveve	326	751	760	1,511	49.70	50.30	100.00
Mumbeji	919	2,135	2,258	4,393	48.60	51.40	100.00
<b>Kasempa District</b>	9,265	25,810	26,094	51,904	49.73	50.27	100.00
<b>Kasempa Constituency</b>	9,265	25,810	26,094	51,904	49.73	50.27	100.00
Dengwe	531	1,382	1,391	2,773	49.84	50.16	100.00
Ingwe	658	1,820	1,883	3,703	49.15	50.85	100.00
Jifumpa	138	342	341	683	50.07	49.93	100.00
Kalombe	342	954	930	1,884	50.64	49.36	100.00
Kamakechi	198	614	593	1,207	50.87	49.13	100.00
Kamakuku	210	599	587	1,186	50.51	49.49	100.00
Kamatete	364	1,127	1,114	2,241	50.29	49.71	100.00
Kamusongolwa	227	659	667	1,326	49.70	50.30	100.00
Kanongo	719	2,064	2,074	4,138	49.88	50.12	100.00
Kantenda	745	2,118	2,157	4,275	49.54	50.46	100.00
Kelongwe	253	669	674	1,343	49.81	50.19	100.00
Kikonkomene	627	1,787	1,833	3,620	49.36	50.64	100.00
Mpungu	474	1,311	1,316	2,627	49.90	50.10	100.00
Mukema	593	1,752	1,781	3,533	49.59	50.41	100.00
Mukinge	566	1,559	1,636	3,195	48.79	51.21	100.00
Mukunanshi	504	1,318	1,303	2,621	50.29	49.71	100.00
Njenga	844	2,271	2,234	4,505	50.41	49.59	100.00
Nkeyama	84	220	260	480	45.83	54.17	100.00
Nselauke	708	1,931	1,998	3,929	49.15	50.85	100.00
Nyoka	480	1,313	1,322	2,635	49.83	50.17	100.00
<b>Mufumbwe District</b>	7,777	21,875	22,127	44,002	49.71	50.29	100.00
<b>Mufumbwe Constituency</b>	7,777	21,875	22,127	44,002	49.71	50.29	100.00
Chizela	512	1,508	1,534	3,042	49.57	50.43	100.00
Kabipupu	209	604	581	1,185	50.97	49.03	100.00
Kalambu	1,047	3,255	3,255	6,510	50.00	50.00	100.00
Kalengwa	314	807	844	1,651	48.88	51.12	100.00
Kamabute	472	1,301	1,400	2,701	48.17	51.83	100.00
Kaminzekinzeke	410	1,151	1,124	2,275	50.59	49.41	100.00
Kashima East	180	570	606	1,176	48.47	51.53	100.00
Kashima West	903	2,354	2,385	4,739	49.67	50.33	100.00
Kikonge	297	797	822	1,619	49.23	50.77	100.00
Lalafuta	660	1,730	1,711	3,441	50.28	49.72	100.00
Matushi	1,165	3,125	3,231	6,356	49.17	50.83	100.00
Munyambala	254	752	733	1,485	50.64	49.36	100.00

Province, District, Constituency And Ward	2000 Population			Percent Distribution			
	Households	Males	Females	Total	Males	Females	Total
Mushima	652	1,965	2,013	3,978	49.40	50.60	100.00
Musonweji	248	734	679	1,413	51.95	48.05	100.00
Shukwe	454	1,222	1,209	2,431	50.27	49.73	100.00
<b>Mwinilunga District</b>	<b>22,590</b>	<b>58,543</b>	<b>58,962</b>	<b>117,505</b>	<b>49.82</b>	<b>50.18</b>	<b>100.00</b>
<b>Mwinilunga East Constituency</b>	<b>11,294</b>	<b>29,757</b>	<b>29,858</b>	<b>59,615</b>	<b>49.92</b>	<b>50.08</b>	<b>100.00</b>
Chibwika	634	1,660	1,621	3,281	50.59	49.41	100.00
Chisasa	642	1,673	1,734	3,407	49.10	50.90	100.00
Kakoma	1,294	3,277	3,295	6,572	49.86	50.14	100.00
Kamapanda	1,373	3,613	3,491	7,104	50.86	49.14	100.00
Kanyama	1,613	4,287	4,316	8,603	49.83	50.17	100.00
Kasampula	171	475	510	985	48.22	51.78	100.00
Lumwana	889	2,397	2,327	4,724	50.74	49.26	100.00
Mudyanyama	530	1,291	1,305	2,596	49.73	50.27	100.00
Mundwiji	1,353	3,566	3,503	7,069	50.45	49.55	100.00
Ntambu	1,343	3,732	3,780	7,512	49.68	50.32	100.00
Sailung'a	490	1,350	1,454	2,804	48.15	51.85	100.00
Samuteba	962	2,436	2,522	4,958	49.13	50.87	100.00
<b>Mwinilunga West Constituency</b>	<b>11,296</b>	<b>28,786</b>	<b>29,104</b>	<b>57,890</b>	<b>49.73</b>	<b>50.27</b>	<b>100.00</b>
Chana Chamuhinga	584	1,490	1,460	2,950	50.51	49.49	100.00
Ikelenge	1,468	3,774	3,826	7,600	49.66	50.34	100.00
Jimbe	659	1,730	1,747	3,477	49.76	50.24	100.00
Kanong'esha	2,718	6,709	6,746	13,455	49.86	50.14	100.00
Mukangala	645	1,717	1,794	3,511	48.90	51.10	100.00
Mulumbi	2,413	6,429	6,519	12,948	49.65	50.35	100.00
Mwininyilamba	1,189	2,959	2,977	5,936	49.85	50.15	100.00
Nyakaseya	1,620	3,978	4,035	8,013	49.64	50.36	100.00
<b>Solwezi District</b>	<b>38,546</b>	<b>102,241</b>	<b>101,556</b>	<b>203,797</b>	<b>50.17</b>	<b>49.83</b>	<b>100.00</b>
<b>Solwezi Central Constituency</b>	<b>13,066</b>	<b>34,755</b>	<b>34,343</b>	<b>69,098</b>	<b>50.30</b>	<b>49.70</b>	<b>100.00</b>
Kamalamba	2,466	6,151	6,182	12,333	49.87	50.13	100.00
Kapijimpanga	2,939	7,213	7,172	14,385	50.14	49.86	100.00
Kimasala	3,032	8,187	8,141	16,328	50.14	49.86	100.00
Sandang'ombe	1,465	4,345	4,220	8,565	50.73	49.27	100.00
Tuvwananai	3,164	8,859	8,628	17,487	50.66	49.34	100.00
<b>Solwezi East Constituency</b>	<b>7,337</b>	<b>19,452</b>	<b>19,342</b>	<b>38,794</b>	<b>50.14</b>	<b>49.86</b>	<b>100.00</b>
Chikola	887	2,442	2,296	4,738	51.54	48.46	100.00
Kalilele	512	1,390	1,297	2,687	51.73	48.27	100.00
Kangwena	1,033	2,586	2,619	5,205	49.68	50.32	100.00
Mapunga	1,112	2,913	2,903	5,816	50.09	49.91	100.00
Mujimanzovu	468	1,255	1,311	2,566	48.91	51.09	100.00
Mulonga	1,839	4,794	4,850	9,644	49.71	50.29	100.00
Musaka	1,486	4,072	4,066	8,138	50.04	49.96	100.00
<b>Solwezi West Constituency</b>	<b>18,143</b>	<b>48,034</b>	<b>47,871</b>	<b>95,905</b>	<b>50.08</b>	<b>49.92</b>	<b>100.00</b>
Chovwe	957	2,651	2,691	5,342	49.63	50.37	100.00
Kibanza	361	957	841	1,798	53.23	46.77	100.00
Matebo	4,768	11,998	11,744	23,742	50.53	49.47	100.00
Mukumbi	1,249	3,619	3,614	7,233	50.03	49.97	100.00
Mumbezhi	1,485	4,182	4,239	8,421	49.66	50.34	100.00
Mumena	6,004	16,379	16,285	32,664	50.14	49.86	100.00
Musele	1,769	4,380	4,528	8,908	49.17	50.83	100.00
Shilenda	1,450	3,868	3,929	7,797	49.61	50.39	100.00
<b>Zambezi District</b>	<b>12,628</b>	<b>32,286</b>	<b>32,677</b>	<b>64,963</b>	<b>49.70</b>	<b>50.30</b>	<b>100.00</b>

Province, District, Constituency And Ward	2000 Population			Percent Distribution			
	Households	Males	Females	Total	Males	Females	Total
<b>Zambezi East Constituency</b>	8,901	22,944	23,062	46,006	49.87	50.13	100.00
Chilenga Chizenzi	1,071	2,648	2,634	5,282	50.13	49.87	100.00
Chitokoloki	550	1,471	1,424	2,895	50.81	49.19	100.00
Chivweji Kasesi	1,045	2,558	2,646	5,204	49.15	50.85	100.00
Dipalata	280	706	755	1,461	48.32	51.68	100.00
Lunkunyi	466	1,127	1,124	2,251	50.07	49.93	100.00
Lwitadi Lwatembo	635	1,694	1,737	3,431	49.37	50.63	100.00
Mpidi Kakonga	1,156	2,718	2,795	5,513	49.30	50.70	100.00
Mukandakunda	1,329	3,318	3,340	6,658	49.83	50.17	100.00
Nyakulenga	1,254	3,287	3,342	6,629	49.59	50.41	100.00
Zambezi	1,115	3,417	3,265	6,682	51.14	48.86	100.00
<b>Zambezi West Constituency</b>	3,727	9,342	9,615	18,957	49.28	50.72	100.00
Likungu	516	1,187	1,210	2,397	49.52	50.48	100.00
Mapachi Chinyingi	1,353	3,277	3,434	6,711	48.83	51.17	100.00
Matondo Nyachikanji	578	1,557	1,618	3,175	49.04	50.96	100.00
Muyembe Liyoyu	874	2,243	2,363	4,606	48.70	51.30	100.00
Mwange Nyawanda	406	1,078	990	2,068	52.13	47.87	100.00
<b>Southern Province</b>	204,398	601,440	610,684	1,212,124	49.62	50.38	100.00
<b>Choma District</b>	33,655	100,791	104,107	204,898	49.19	50.81	100.00
<b>Choma Constituency</b>	13,353	36,873	36,979	73,852	49.93	50.07	100.00
Kalundanya	2,254	5,686	5,554	11,240	50.59	49.41	100.00
Mubula	2,330	5,520	5,341	10,861	50.82	49.18	100.00
Nakeempa	948	2,937	3,006	5,943	49.42	50.58	100.00
Namuswa	1,491	4,567	4,745	9,312	49.04	50.96	100.00
Siasikabole	1,153	3,700	3,849	7,549	49.01	50.99	100.00
Sikalundu	1,588	4,408	4,434	8,842	49.85	50.15	100.00
Simacheche	1,022	2,694	2,783	5,477	49.19	50.81	100.00
Singani	1,194	3,662	3,600	7,262	50.43	49.57	100.00
State Land	1,373	3,699	3,667	7,366	50.22	49.78	100.00
<b>Mbabala Constituency</b>	9,463	30,144	30,954	61,098	49.34	50.66	100.00
Chilalantambo	1,313	4,040	4,031	8,071	50.06	49.94	100.00
Kabimba	447	1,498	1,609	3,107	48.21	51.79	100.00
Macha	739	2,554	2,665	5,219	48.94	51.06	100.00
Mang'unza	745	2,446	2,544	4,990	49.02	50.98	100.00
Mapanza	859	2,780	2,907	5,687	48.88	51.12	100.00
Mbabala	1,713	5,576	5,855	11,431	48.78	51.22	100.00
Simamvwa	1,924	5,419	5,309	10,728	50.51	49.49	100.00
Simaubi	1,723	5,831	6,034	11,865	49.14	50.86	100.00
<b>Pemba Constituency</b>	10,839	33,774	36,174	69,948	48.28	51.72	100.00
Batoka	2,041	6,234	6,685	12,919	48.25	51.75	100.00
Habunkululu	1,016	3,400	3,702	7,102	47.87	52.13	100.00
Hamaundu	2,079	6,413	6,638	13,051	49.14	50.86	100.00
Kasiya	1,648	5,157	5,551	10,708	48.16	51.84	100.00
Kauba	844	2,762	3,063	5,825	47.42	52.58	100.00
Maambo	1,674	5,058	5,367	10,425	48.52	51.48	100.00
Nachibanga	1,164	3,778	4,085	7,863	48.05	51.95	100.00
Pemba	373	972	1,083	2,055	47.30	52.70	100.00
<b>Gwembe District</b>	5,604	16,862	17,271	34,133	49.40	50.60	100.00
<b>Gwembe Constituency</b>	5,604	16,862	17,271	34,133	49.40	50.60	100.00
Bbondo	696	1,803	1,811	3,614	49.89	50.11	100.00
Chibuwe	458	1,346	1,284	2,630	51.18	48.82	100.00
Chisale	187	604	691	1,295	46.64	53.36	100.00



Province, District, Constituency And Ward	2000 Population			Percent Distribution			
	Households	Males	Females	Total	Males	Females	Total
Fumbo	426	1,287	1,360	2,647	48.62	51.38	100.00
Jongola	542	1,734	1,749	3,483	49.78	50.22	100.00
Jumbo/Kkoma	484	1,571	1,688	3,259	48.20	51.80	100.00
Katokota	290	707	676	1,383	51.12	48.88	100.00
Lukonde	909	2,752	2,868	5,620	48.97	51.03	100.00
Luumbo	433	1,403	1,464	2,867	48.94	51.06	100.00
Masanga	382	1,201	1,163	2,364	50.80	49.20	100.00
Siampande	357	1,114	1,153	2,267	49.14	50.86	100.00
Sinafala	440	1,340	1,364	2,704	49.56	50.44	100.00
<b>Itezhi-Tezhi District</b>	<b>7,998</b>	<b>22,170</b>	<b>20,941</b>	<b>43,111</b>	<b>51.43</b>	<b>48.57</b>	<b>100.00</b>
<b>Itezhi-Tezhi Constituency</b>	<b>7,998</b>	<b>22,170</b>	<b>20,941</b>	<b>43,111</b>	<b>51.43</b>	<b>48.57</b>	<b>100.00</b>
Banamwaze	297	831	854	1,685	49.32	50.68	100.00
Basanga	876	2,074	1,992	4,066	51.01	48.99	100.00
Itezhi-Tezhi	484	1,764	1,000	2,764	63.82	36.18	100.00
Itumbi	983	2,453	2,428	4,881	50.26	49.74	100.00
Kabulungwe	304	769	686	1,455	52.85	47.15	100.00
Lubanda	917	2,483	2,377	4,860	51.09	48.91	100.00
Luchena	427	1,047	1,027	2,074	50.48	49.52	100.00
Luubwe	267	772	699	1,471	52.48	47.52	100.00
Makunka	209	662	644	1,306	50.69	49.31	100.00
Masemu	2,096	5,659	5,498	11,157	50.72	49.28	100.00
Mbila	744	2,497	2,532	5,029	49.65	50.35	100.00
Nyambo	394	1,159	1,204	2,363	49.05	50.95	100.00
<b>Kalomo District</b>	<b>26,921</b>	<b>26,921</b>	<b>26,921</b>	<b>169,503</b>	<b>15.88</b>	<b>15.88</b>	<b>31.76</b>
<b>Dundumwenzi Constituency</b>	<b>6,475</b>	<b>21,717</b>	<b>22,603</b>	<b>44,320</b>	<b>49.00</b>	<b>51.00</b>	<b>100.00</b>
Chamuka	242	988	1,029	2,017	48.98	51.02	100.00
Chikanta	1,354	4,339	4,565	8,904	48.73	51.27	100.00
Kasukwe	1,806	6,153	6,381	12,534	49.09	50.91	100.00
Munyeke	1,243	3,997	4,195	8,192	48.79	51.21	100.00
Namela	1,830	6,240	6,433	12,673	49.24	50.76	100.00
<b>Kalomo Constituency</b>	<b>14,243</b>	<b>43,055</b>	<b>44,596</b>	<b>87,651</b>	<b>49.12</b>	<b>50.88</b>	<b>100.00</b>
Chawila	789	2,265	2,374	4,639	48.83	51.17	100.00
Choonga	2,569	7,267	7,515	14,782	49.16	50.84	100.00
Kalonda	1,842	5,517	5,646	11,163	49.42	50.58	100.00
Mayoba	2,679	8,770	8,854	17,624	49.76	50.24	100.00
Nachikungu	940	2,915	3,135	6,050	48.18	51.82	100.00
Namwianga	934	2,835	2,692	5,527	51.29	48.71	100.00
Siachitema	3,151	9,686	10,346	20,032	48.35	51.65	100.00
Simyakwe	1,044	3,034	3,248	6,282	48.30	51.70	100.00
Sipatunyana	295	766	786	1,552	49.36	50.64	100.00
<b>Mapatizya Constituency</b>	<b>6,203</b>	<b>18,403</b>	<b>19,129</b>	<b>37,532</b>	<b>49.03</b>	<b>50.97</b>	<b>100.00</b>
Chidi	1,749	5,246	5,519	10,765	48.73	51.27	100.00
Luyaba	943	2,896	3,066	5,962	48.57	51.43	100.00
Mbwiko	824	2,137	2,199	4,336	49.29	50.71	100.00
Siamafumba	1,611	4,926	5,179	10,105	48.75	51.25	100.00
Simwatachela	673	1,895	1,855	3,750	50.53	49.47	100.00
Zimba	403	1,303	1,311	2,614	49.85	50.15	100.00
<b>Kazungula District</b>	<b>12,601</b>	<b>34,178</b>	<b>34,087</b>	<b>68,265</b>	<b>50.07</b>	<b>49.93</b>	<b>100.00</b>
<b>Katombola Constituency</b>	<b>12,601</b>	<b>34,178</b>	<b>34,087</b>	<b>68,265</b>	<b>50.07</b>	<b>49.93</b>	<b>100.00</b>

Province, District, Constituency And Ward	2000 Population			Percent Distribution			
	Households	Males	Females	Total	Males	Females	Total
Chooma	495	1,529	1,539	3,068	49.84	50.16	100.00
Kanchele	2,000	5,088	4,922	10,010	50.83	49.17	100.00
Katapazi	755	2,008	2,101	4,109	48.87	51.13	100.00
Kauwe	1,593	5,353	5,474	10,827	49.44	50.56	100.00
Moomba	372	813	831	1,644	49.45	50.55	100.00
Mukuni	1,591	3,636	3,640	7,276	49.97	50.03	100.00
Musokotwane	1,198	2,931	2,901	5,832	50.26	49.74	100.00
Ngwezi	704	1,884	1,807	3,691	51.04	48.96	100.00
Nyawa	928	3,180	3,335	6,515	48.81	51.19	100.00
Sekute	999	2,663	2,674	5,337	49.90	50.10	100.00
Sikaunzwe	1,382	3,447	3,214	6,661	51.75	48.25	100.00
Simango	584	1,646	1,649	3,295	49.95	50.05	100.00
<b>Livingstone District</b>	<b>18,856</b>	<b>51,828</b>	<b>51,460</b>	<b>103,288</b>	<b>50.18</b>	<b>49.82</b>	<b>100.00</b>
<b>Livingstone Constituency</b>	<b>18,856</b>	<b>51,828</b>	<b>51,460</b>	<b>103,288</b>	<b>50.18</b>	<b>49.82</b>	<b>100.00</b>
Akapelwa	943	2,356	2,348	4,704	50.09	49.91	100.00
Dambwa	1,841	5,037	5,018	10,055	50.09	49.91	100.00
Dr. Mubitana	486	1,318	1,239	2,557	51.54	48.46	100.00
Freedom	1,108	3,390	3,476	6,866	49.37	50.63	100.00
Kariba	472	1,555	1,443	2,998	51.87	48.13	100.00
Libuyu	2,267	6,118	6,110	12,228	50.03	49.97	100.00
Linzuma	518	1,588	1,624	3,212	49.44	50.56	100.00
Maramba	1,523	4,379	4,504	8,883	49.30	50.70	100.00
Musi-o-tunya	1,414	3,953	3,845	7,798	50.69	49.31	100.00
Mwalibonena	2,661	6,359	6,490	12,849	49.49	50.51	100.00
Namatama	1,132	2,688	2,563	5,251	51.19	48.81	100.00
Nansanzu	1,146	3,310	3,115	6,425	51.52	48.48	100.00
Shungu	721	1,970	1,881	3,851	51.16	48.84	100.00
Simonga	1,760	5,459	5,511	10,970	49.76	50.24	100.00
Zambezi	864	2,348	2,293	4,641	50.59	49.41	100.00
<b>Mazabuka District</b>	<b>36,210</b>	<b>102,585</b>	<b>100,634</b>	<b>203,219</b>	<b>50.48</b>	<b>49.52</b>	<b>100.00</b>
<b>Chikankata Constituency</b>	<b>10,166</b>	<b>29,366</b>	<b>29,249</b>	<b>58,615</b>	<b>50.10</b>	<b>49.90</b>	<b>100.00</b>
Chitete	1,374	4,731	4,608	9,339	50.66	49.34	100.00
Kasenga	1,187	3,217	3,070	6,287	51.17	48.83	100.00
Mabweatuba	1,854	5,356	5,386	10,742	49.86	50.14	100.00
Malala	1,150	3,418	3,545	6,963	49.09	50.91	100.00
Namalundu	733	2,038	1,911	3,949	51.61	48.39	100.00
Nansenga	1,334	3,878	3,892	7,770	49.91	50.09	100.00
Upper Kaleya	2,534	6,728	6,837	13,565	49.60	50.40	100.00
<b>Magoye Constituency</b>	<b>10,326</b>	<b>31,829</b>	<b>32,434</b>	<b>64,263</b>	<b>49.53</b>	<b>50.47</b>	<b>100.00</b>
Chivuna	3,356	10,626	11,147	21,773	48.80	51.20	100.00
Itebe	500	1,462	1,271	2,733	53.49	46.51	100.00
Kalama	386	1,081	1,059	2,140	50.51	49.49	100.00
Konkola	499	1,685	1,684	3,369	50.01	49.99	100.00
Munenga	479	1,675	1,730	3,405	49.19	50.81	100.00
Munjile	322	1,071	1,071	2,142	50.00	50.00	100.00
Mwanachingwala	1,777	4,462	4,489	8,951	49.85	50.15	100.00
Ngwezi	3,007	9,767	9,983	19,750	49.45	50.55	100.00

Province, District, Constituency And Ward	2000 Population			Percent Distribution			
	Households	Males	Females	Total	Males	Females	Total
<b>Mazabuka Constituency</b>	15,718	41,390	38,951	80,341	51.52	48.48	100.00
Chizobo	4,603	12,430	12,057	24,487	50.76	49.24	100.00
Lubombo	1,926	4,813	4,806	9,619	50.04	49.96	100.00
Mazabuka	2,799	6,416	5,985	12,401	51.74	48.26	100.00
Nakambala	3,957	11,058	9,837	20,895	52.92	47.08	100.00
Nega-Nega	2,433	6,673	6,266	12,939	51.57	48.43	100.00
<b>Monze District</b>	26,398	80,697	82,881	163,578	49.33	50.67	100.00
<b>Bweengwa Constituency</b>	7,039	24,360	25,291	49,651	49.06	50.94	100.00
Bweengwa	1,658	6,731	7,212	13,943	48.28	51.72	100.00
Choongo East	1,557	5,045	5,247	10,292	49.02	50.98	100.00
Choongo West	919	2,987	3,128	6,115	48.85	51.15	100.00
Kaila	815	2,660	2,656	5,316	50.04	49.96	100.00
Keemba	1,385	4,625	4,854	9,479	48.79	51.21	100.00
Malundu	705	2,312	2,194	4,506	51.31	48.69	100.00
<b>Monze Constituency</b>	15,664	45,484	46,619	92,103	49.38	50.62	100.00
Bbombo	990	3,092	3,239	6,331	48.84	51.16	100.00
Chipembele	2,314	6,420	6,601	13,021	49.30	50.70	100.00
Chisekesi	2,025	6,069	5,926	11,995	50.60	49.40	100.00
Hatontola	1,798	6,024	5,935	11,959	50.37	49.63	100.00
Hufwa	841	2,634	2,745	5,379	48.97	51.03	100.00
Katimba	823	2,614	2,920	5,534	47.24	52.76	100.00
Manungu	2,757	6,683	6,922	13,605	49.12	50.88	100.00
Mayaba	871	2,500	2,620	5,120	48.83	51.17	100.00
Monze	2,043	5,772	6,051	11,823	48.82	51.18	100.00
Ufwenuka	1,202	3,676	3,660	7,336	50.11	49.89	100.00
<b>Moomba Constituency</b>	3,695	10,853	10,971	21,824	49.73	50.27	100.00
Chona	548	1,671	1,666	3,337	50.07	49.93	100.00
Moomba	421	1,226	1,170	2,396	51.17	48.83	100.00
Mwanza East	832	2,583	2,630	5,213	49.55	50.45	100.00
Mwanza West	1,894	5,373	5,505	10,878	49.39	50.61	100.00
<b>Namwala District</b>	12,075	40,486	42,324	82,810	48.89	51.11	100.00
<b>Namwala Constituency</b>	12,075	40,486	42,324	82,810	48.89	51.11	100.00
Baambwe	525	1,411	1,463	2,874	49.10	50.90	100.00
Chitongo	553	2,049	2,127	4,176	49.07	50.93	100.00
Kabulamwanda	629	2,236	2,348	4,584	48.78	51.22	100.00
Kakuweza Ngabo	927	2,725	2,774	5,499	49.55	50.45	100.00
Kantengwa	806	2,402	2,216	4,618	52.01	47.99	100.00
Maala	824	2,616	2,760	5,376	48.66	51.34	100.00
Mbeza	427	1,377	1,381	2,758	49.93	50.07	100.00
Moobola	1,797	6,096	6,578	12,674	48.10	51.90	100.00
Nakamboma	2,569	9,281	9,843	19,124	48.53	51.47	100.00
Namakube	1,220	4,518	4,796	9,314	48.51	51.49	100.00
Namwala Central	977	2,736	2,796	5,532	49.46	50.54	100.00
Ndema	821	3,039	3,242	6,281	48.38	51.62	100.00
<b>Siavonga District</b>	10,504	29,171	29,693	58,864	49.56	50.44	100.00

Province, District, Constituency And Ward	2000 Population			Percent Distribution			
	Households	Males	Females	Total	Males	Females	Total
<b>Siavonga Constituency</b>	10,504	29,171	29,693	58,864	49.56	50.44	100.00
Chirundu	1,883	4,779	4,761	9,540	50.09	49.91	100.00
Ibwemunyama	504	1,599	1,600	3,199	49.98	50.02	100.00
Kariba	1,975	5,067	4,623	9,690	52.29	47.71	100.00
Lusangazi	925	2,804	2,961	5,765	48.64	51.36	100.00
Lusitu	548	1,657	1,770	3,427	48.35	51.65	100.00
Manchavwa	607	1,560	1,462	3,022	51.62	48.38	100.00
Mulimya	587	1,628	1,679	3,307	49.23	50.77	100.00
Nanyangwe	340	874	912	1,786	48.94	51.06	100.00
Ng'ombe Ilede	1,360	3,889	4,156	8,045	48.34	51.66	100.00
Sikoongo	830	2,585	2,875	5,460	47.34	52.66	100.00
Simaamba	574	1,425	1,405	2,830	50.35	49.65	100.00
Sinadambwe	371	1,304	1,489	2,793	46.69	53.31	100.00
<b>Sinazongwe District</b>	13,576	39,497	40,958	80,455	49.09	50.91	100.00
<b>Sinazongwe Constituency</b>	13,576	39,497	40,958	80,455	49.09	50.91	100.00
Maamba	1,821	5,095	5,204	10,299	49.47	50.53	100.00
Mabinga	185	561	539	1,100	51.00	49.00	100.00
Malima	939	3,767	3,943	7,710	48.86	51.14	100.00
Muuka	848	2,398	2,458	4,856	49.38	50.62	100.00
Mweemba	2,304	6,075	6,284	12,359	49.15	50.85	100.00
Mweenda	697	2,000	2,168	4,168	47.98	52.02	100.00
Mweezya	862	2,357	2,444	4,801	49.09	50.91	100.00
Namazambwe	574	1,602	1,566	3,168	50.57	49.43	100.00
Nang'ombe	2,719	8,358	8,830	17,188	48.63	51.37	100.00
Nkandambwe	1,035	2,925	3,152	6,077	48.13	51.87	100.00
Sinazongwe	1,125	3,113	3,015	6,128	50.80	49.20	100.00
Tekelo	467	1,246	1,355	2,601	47.90	52.10	100.00
<b>Western Province</b>	150,420	371,844	393,244	765,088	48.60	51.40	100.00
<b>Kalabo District</b>	23,970	54,176	60,630	114,806	47.19	52.81	100.00
<b>Kalabo Constituency</b>	11,533	26,309	28,859	55,168	47.69	52.31	100.00
Buleya	1,184	2,440	2,666	5,106	47.79	52.21	100.00
Kandambo	570	1,296	1,416	2,712	47.79	52.21	100.00
Liumba	841	1,804	1,978	3,782	47.70	52.30	100.00
Luanginga	1,191	3,707	3,641	7,348	50.45	49.55	100.00
Lukona	1,451	3,484	3,930	7,414	46.99	53.01	100.00
Lutwi	1,531	3,228	3,576	6,804	47.44	52.56	100.00
Mapungu	665	1,563	1,695	3,258	47.97	52.03	100.00
Ndoka	1,764	3,752	4,123	7,875	47.64	52.36	100.00
Ng'uma	942	2,333	2,691	5,024	46.44	53.56	100.00
Yuka	1,394	2,702	3,143	5,845	46.23	53.77	100.00
<b>Liuwa Constituency</b>	5,116	11,673	12,860	24,533	47.58	52.42	100.00
Kuuli	802	1,881	2,117	3,998	47.05	52.95	100.00
Libonda	1,436	3,697	3,892	7,589	48.72	51.28	100.00
Likulundundu	755	1,807	2,032	3,839	47.07	52.93	100.00
Siluwe	657	1,306	1,492	2,798	46.68	53.32	100.00
Sishekanu	1,466	2,982	3,327	6,309	47.27	52.73	100.00
<b>Sikongo Constituency</b>	7,321	16,194	18,911	35,105	46.13	53.87	100.00
Licha	1,472	3,143	3,766	6,909	45.49	54.51	100.00
Liumena	874	1,794	2,153	3,947	45.45	54.55	100.00

Province, District, Constituency And Ward	2000 Population			Percent Distribution			
	Households	Males	Females	Total	Males	Females	Total
Lueti	540	1,367	1,729	3,096	44.15	55.85	100.00
Lwambi	425	973	1,159	2,132	45.64	54.36	100.00
Maala	977	2,300	2,528	4,828	47.64	52.36	100.00
Mambolomoka	379	888	1,100	1,988	44.67	55.33	100.00
Mutala	530	1,175	1,261	2,436	48.23	51.77	100.00
Mwenyi	722	1,554	1,756	3,310	46.95	53.05	100.00
Nengu	396	858	1,086	1,944	44.14	55.86	100.00
Tuuwa	1,006	2,142	2,373	4,515	47.44	52.56	100.00
<b>Kaoma District</b>	<b>29,984</b>	<b>79,348</b>	<b>83,220</b>	<b>162,568</b>	<b>48.81</b>	<b>51.19</b>	<b>100.00</b>
<b>Kaoma Constituency</b>	<b>12,288</b>	<b>37,493</b>	<b>38,708</b>	<b>76,201</b>	<b>49.20</b>	<b>50.80</b>	<b>100.00</b>
Lalafuta	964	2,776	2,796	5,572	49.82	50.18	100.00
Litoya	1,483	4,205	4,336	8,541	49.23	50.77	100.00
Mulamatila	3,760	9,843	10,009	19,852	49.58	50.42	100.00
Naliele	1,454	3,570	3,831	7,401	48.24	51.76	100.00
Namilangi	3,155	8,548	9,086	17,634	48.47	51.53	100.00
Nkeyema	1,574	4,951	4,915	9,866	50.18	49.82	100.00
Shitwa	1,342	3,600	3,735	7,335	49.08	50.92	100.00
<b>Luampa Constituency</b>	<b>7,470</b>	<b>14,776</b>	<b>15,903</b>	<b>30,679</b>	<b>48.16</b>	<b>51.84</b>	<b>100.00</b>
Luampa	962	2,119	2,392	4,511	46.97	53.03	100.00
Lui	1,669	4,047	4,397	8,444	47.93	52.07	100.00
Mbanyutu	1,100	2,727	2,868	5,595	48.74	51.26	100.00
Mulwa	912	2,303	2,596	4,899	47.01	52.99	100.00
Namando	571	1,391	1,419	2,810	49.50	50.50	100.00
Nyambi	802	2,189	2,231	4,420	49.52	50.48	100.00
<b>Mangango Constituency</b>	<b>10,226</b>	<b>27,079</b>	<b>28,609</b>	<b>55,688</b>	<b>48.63</b>	<b>51.37</b>	<b>100.00</b>
Kanabilumbu	538	1,484	1,475	2,959	50.15	49.85	100.00
Luambuwa	1,193	3,158	3,592	6,750	46.79	53.21	100.00
Mangango	1,193	3,531	3,676	7,207	48.99	51.01	100.00
Mushwala	3,452	8,472	8,996	17,468	48.50	51.50	100.00
Namafulu	1,287	3,499	3,822	7,321	47.79	52.21	100.00
Nkenga	1,178	3,048	3,129	6,177	49.34	50.66	100.00
Shikombwe	1,385	3,887	3,919	7,806	49.80	50.20	100.00
<b>Lukulu District</b>	<b>13,488</b>	<b>33,585</b>	<b>34,790</b>	<b>68,375</b>	<b>49.12</b>	<b>50.88</b>	<b>100.00</b>
<b>Lukulu East Constituency</b>	<b>9,569</b>	<b>23,936</b>	<b>24,808</b>	<b>48,744</b>	<b>49.11</b>	<b>50.89</b>	<b>100.00</b>
Dongwe	299	1,007	1,040	2,047	49.19	50.81	100.00
Kamilende	722	2,018	1,925	3,943	51.18	48.82	100.00
Kang'oti	799	1,758	1,990	3,748	46.91	53.09	100.00
Kashamba	123	322	305	627	51.36	48.64	100.00
Kawayu	340	952	923	1,875	50.77	49.23	100.00
Likapai	556	1,446	1,561	3,007	48.09	51.91	100.00
Luanchima	1,081	2,313	2,430	4,743	48.77	51.23	100.00
Lukau	405	967	1,096	2,063	46.87	53.13	100.00
Mbanga	706	1,844	1,989	3,833	48.11	51.89	100.00
Mwandi	2,196	5,565	5,604	11,169	49.83	50.17	100.00
Mwito	1,033	2,598	2,695	5,293	49.08	50.92	100.00
Namayula	670	1,582	1,617	3,199	49.45	50.55	100.00
Simakumba	639	1,564	1,633	3,197	48.92	51.08	100.00
<b>Lukulu West Constituency</b>	<b>3,919</b>	<b>9,649</b>	<b>9,982</b>	<b>19,631</b>	<b>49.15</b>	<b>50.85</b>	<b>100.00</b>
Kakwacha	331	647	650	1,297	49.88	50.12	100.00

Province, District, Constituency And Ward	2000 Population			Percent Distribution			
	Households	Males	Females	Total	Males	Females	Total
Kashizhi	1,008	2,385	2,422	4,807	49.62	50.38	100.00
Lupui	353	941	958	1,899	49.55	50.45	100.00
Lutembwe	393	1,021	1,100	2,121	48.14	51.86	100.00
Matala	314	744	809	1,553	47.91	52.09	100.00
Mitete	580	1,373	1,475	2,848	48.21	51.79	100.00
Nyaala	940	2,538	2,568	5,106	49.71	50.29	100.00
<b>Mongu District</b>	<b>32,054</b>	<b>79,300</b>	<b>82,702</b>	<b>162,002</b>	<b>48.95</b>	<b>51.05</b>	<b>100.00</b>
<b>Luena Constituency</b>	<b>8,806</b>	<b>20,370</b>	<b>22,078</b>	<b>42,448</b>	<b>47.99</b>	<b>52.01</b>	<b>100.00</b>
Ikwichi	387	912	1,019	1,931	47.23	52.77	100.00
Limulunga	2,367	5,642	6,106	11,748	48.03	51.97	100.00
Mabili	424	941	934	1,875	50.19	49.81	100.00
Namboma	795	1,808	1,922	3,730	48.47	51.53	100.00
Nangula	2,633	6,026	6,560	12,586	47.88	52.12	100.00
Ndanda	1,012	2,278	2,609	4,887	46.61	53.39	100.00
Ushaa	1,188	2,763	2,928	5,691	48.55	51.45	100.00
<b>Mongu Constituency</b>	<b>16,005</b>	<b>41,370</b>	<b>41,939</b>	<b>83,309</b>	<b>49.66</b>	<b>50.34</b>	<b>100.00</b>
Imwiko	2,085	5,973	5,678	11,651	51.27	48.73	100.00
Kaande	389	1,005	996	2,001	50.22	49.78	100.00
Kambule	967	2,794	2,752	5,546	50.38	49.62	100.00
Kanyonyo	1,911	5,019	5,292	10,311	48.68	51.32	100.00
Katongo	1,685	4,065	4,293	8,358	48.64	51.36	100.00
Lealui	1,968	4,828	5,049	9,877	48.88	51.12	100.00
Lewanika	885	2,335	2,290	4,625	50.49	49.51	100.00
Lumbo	1,387	3,452	3,288	6,740	51.22	48.78	100.00
Mabumbu	768	1,695	1,793	3,488	48.60	51.40	100.00
Mulambwa	1,296	3,729	3,897	7,626	48.90	51.10	100.00
Namushakende	1,118	2,658	2,844	5,502	48.31	51.69	100.00
Yeta	1,544	3,817	3,767	7,584	50.33	49.67	100.00
<b>Nalikhanda Constituency</b>	<b>7,243</b>	<b>17,560</b>	<b>18,685</b>	<b>36,245</b>	<b>48.45</b>	<b>51.55</b>	<b>100.00</b>
Imalyo	1,040	2,725	2,894	5,619	48.50	51.50	100.00
Iui	1,660	4,231	4,569	8,800	48.08	51.92	100.00
Mbekise	966	2,288	2,345	4,633	49.38	50.62	100.00
Mutondo	963	2,415	2,539	4,954	48.75	51.25	100.00
Nakanyaa	1,542	3,511	3,723	7,234	48.53	51.47	100.00
Nakato	1,072	2,390	2,615	5,005	47.75	52.25	100.00
<b>Senanga District</b>	<b>20,956</b>	<b>52,587</b>	<b>56,532</b>	<b>109,119</b>	<b>48.19</b>	<b>51.81</b>	<b>100.00</b>
<b>Nalolo Constituency</b>	<b>9,509</b>	<b>23,337</b>	<b>25,394</b>	<b>48,731</b>	<b>47.89</b>	<b>52.11</b>	<b>100.00</b>
Kambai	1,656	4,162	4,356	8,518	48.86	51.14	100.00
Kataba	809	1,930	2,207	4,137	46.65	53.35	100.00
Lyamakumba	2,137	5,395	5,838	11,233	48.03	51.97	100.00
Makoka	1,538	3,688	4,066	7,754	47.56	52.44	100.00
Muoyo	726	1,887	1,973	3,860	48.89	51.11	100.00
Nangucha	1,602	3,814	4,234	8,048	47.39	52.61	100.00
Silowana	1,041	2,461	2,720	5,181	47.50	52.50	100.00
<b>Senanga Constituency</b>	<b>11,447</b>	<b>29,250</b>	<b>31,138</b>	<b>60,388</b>	<b>48.44</b>	<b>51.56</b>	<b>100.00</b>
Imatongo	1,601	3,947	4,064	8,011	49.27	50.73	100.00
Lipuwe	1,939	4,615	4,988	9,603	48.06	51.94	100.00
Mata	512	1,289	1,384	2,673	48.22	51.78	100.00
Mwanambunyi	2,151	5,426	6,093	11,519	47.10	52.90	100.00

Province, District, Constituency And Ward	2000 Population			Percent Distribution			
	Households	Males	Females	Total	Males	Females	Total
Sikabuli	538	1,469	1,495	2,964	49.56	50.44	100.00
Silwizi	945	2,483	2,652	5,135	48.35	51.65	100.00
Nalunywa	1,418	3,567	3,815	7,382	48.32	51.68	100.00
Wanyau	2,343	6,454	6,647	13,101	49.26	50.74	100.00
<b>Sesheke District</b>	<b>15,929</b>	<b>39,355</b>	<b>38,814</b>	<b>78,169</b>	<b>50.35</b>	<b>49.65</b>	<b>100.00</b>
<b>Mulobezi Constituency</b>	<b>5,112</b>	<b>12,278</b>	<b>12,235</b>	<b>24,513</b>	<b>50.09</b>	<b>49.91</b>	<b>100.00</b>
Kamanga	378	863	911	1,774	48.65	51.35	100.00
Luamuloba	930	2,210	2,213	4,423	49.97	50.03	100.00
Machile	696	1,517	1,547	3,064	49.51	50.49	100.00
Mulobezi	835	2,221	2,189	4,410	50.36	49.64	100.00
Namwinda	857	2,208	2,137	4,345	50.82	49.18	100.00
Sichili	1,416	3,259	3,238	6,497	50.16	49.84	100.00
<b>Mwandi Constituency</b>	<b>4,668</b>	<b>11,663</b>	<b>11,513</b>	<b>23,176</b>	<b>50.32</b>	<b>49.68</b>	<b>100.00</b>
Luanja	544	1,292	1,323	2,615	49.41	50.59	100.00
Luazamba	811	1,997	2,016	4,013	49.76	50.24	100.00
Mabumbu	672	1,623	1,562	3,185	50.96	49.04	100.00
Magumwi	461	1,188	1,110	2,298	51.70	48.30	100.00
Mushukula	609	1,575	1,608	3,183	49.48	50.52	100.00
Mwandi	773	2,042	2,102	4,144	49.28	50.72	100.00
Sankolonga	441	1,164	1,103	2,267	51.35	48.65	100.00
Simungoma	357	782	689	1,471	53.16	46.84	100.00
<b>Sesheke Constituency</b>	<b>6,149</b>	<b>15,414</b>	<b>15,066</b>	<b>30,480</b>	<b>50.57</b>	<b>49.43</b>	<b>100.00</b>
Imusho	296	758	755	1,513	50.10	49.90	100.00
Kalobolelwa	819	1,764	1,815	3,579	49.29	50.71	100.00
Luampungu	785	1,982	1,971	3,953	50.14	49.86	100.00
Lusu	794	1,882	1,847	3,729	50.47	49.53	100.00
Maondo	966	2,230	2,134	4,364	51.10	48.90	100.00
Mulimambango	2,489	6,798	6,544	13,342	50.95	49.05	100.00
<b>Shang'ombo District</b>	<b>14,039</b>	<b>33,493</b>	<b>36,556</b>	<b>70,049</b>	<b>47.81</b>	<b>52.19</b>	<b>100.00</b>
<b>Sinjembela Constituency</b>	<b>14,039</b>	<b>33,493</b>	<b>36,556</b>	<b>70,049</b>	<b>47.81</b>	<b>52.19</b>	<b>100.00</b>
Beshe	1,574	3,658	4,020	7,678	47.64	52.36	100.00
Kalongola	802	1,904	2,034	3,938	48.35	51.65	100.00
Kaunga Mashi	1,465	3,140	3,490	6,630	47.36	52.64	100.00
Mbeta	1,498	3,619	3,797	7,416	48.80	51.20	100.00
Mufulani	607	1,524	1,664	3,188	47.80	52.20	100.00
Mulonga	2,010	4,917	5,275	10,192	48.24	51.76	100.00
Mutomena	722	1,752	1,886	3,638	48.16	51.84	100.00
Nalwashi	387	870	975	1,845	47.15	52.85	100.00
Sikabenga	1,499	3,577	3,854	7,431	48.14	51.86	100.00
Simu	1,937	4,710	5,209	9,919	47.48	52.52	100.00
Sioma	566	1,679	1,834	3,513	47.79	52.21	100.00
Sipuma	972	2,143	2,518	4,661	45.98	54.02	100.00

## APPENDIX 4

### KEY PERSONS INVOLVED IN THE ANALYSIS

---

#### 2000 Census Analysis Secretariat

Dr. Buleti G. Nsemukila  
Modesto F. C. Banda  
William C. Mayaka  
Kumbutso Dzekedzeke  
Chibwe Lwamba  
Patrick Mumba Chewe  
Margaret T. Mwanamwenge  
Batista M. Chilopa  
Richard Banda

#### Analysts

Chibwe Lwamba  
Margaret T. Mwanamwenge

#### Assistant Analysts

Litia Simbangala  
Josephine Chewe  
Chola Nakazwe  
Gerson Banda  
Musumali Shindano  
Palver Sikanyiti  
Linda Chonya

#### Internal Editors

Dr. Buleti G. Nsemukila  
William C. Mayaka  
Modesto F. C. Banda  
Peter Mukuka  
John Kalumbi  
Patrick Mumba Chewe  
Iven Sikanyiti

#### External Editors

Dr. Jacob R. S. Malungo

#### Programmers

Joseph V. Chanda  
George Namasiku  
Elijah Kashona  
Gift Himuhya

#### Desktop Publishing Officers

Anthony Nkole  
Perry Musenge  
Webster S. Chileshe  
Makoselo C. Bowa

#### Support Staff

Alice Mbewe  
Margaret M. Ndakala  
Maambo Simataa  
Akayombokwa Ngubai  
Edson Malasha Phiri  
Tedson Jere  
Michael Kunda