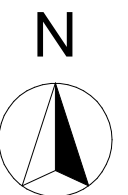


**NEW FABRICATED OFFICE CONTAINER**



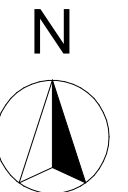
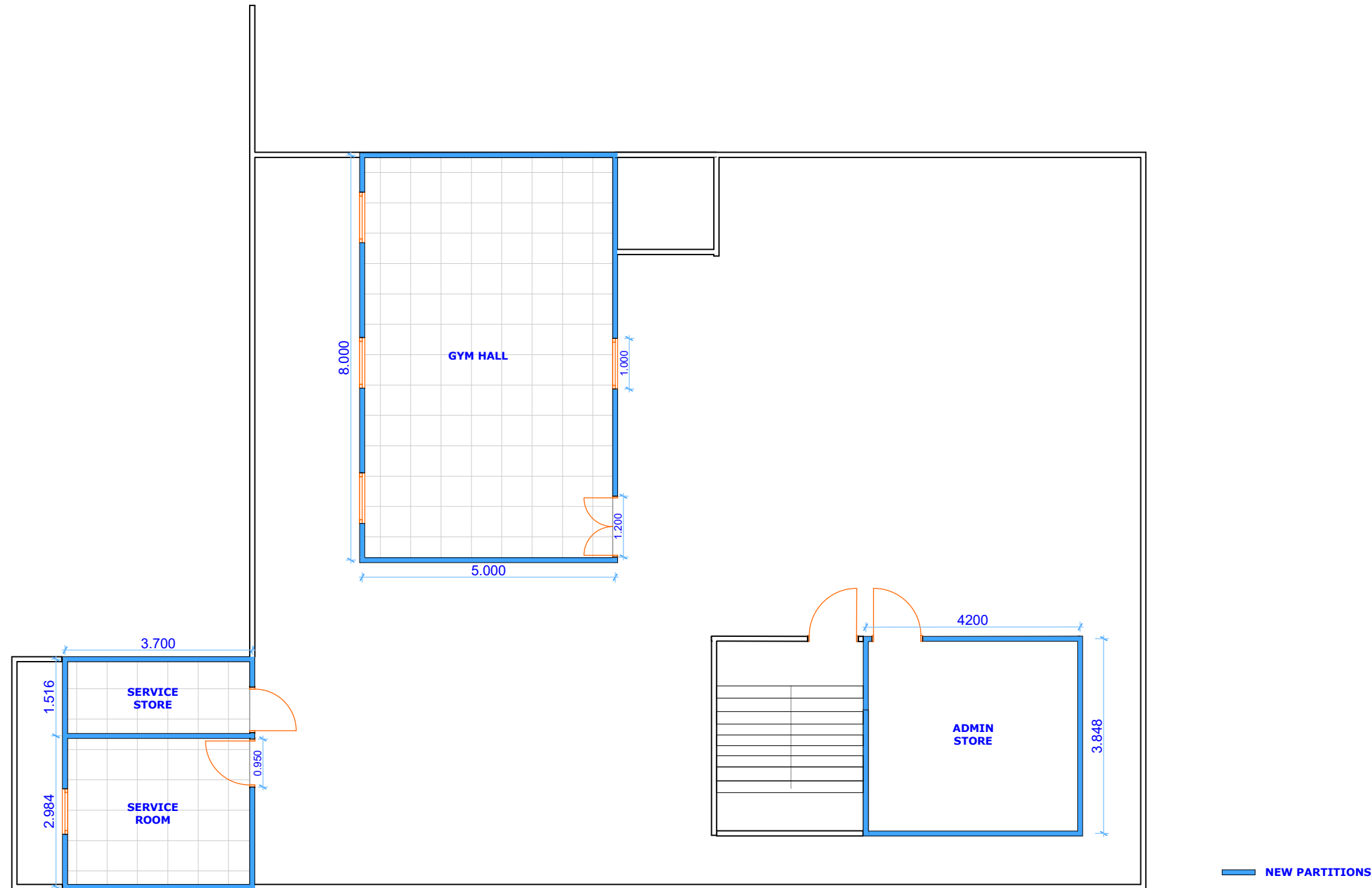
**UNHCR SUDAN WADI HALFA FIELD OFFICE**

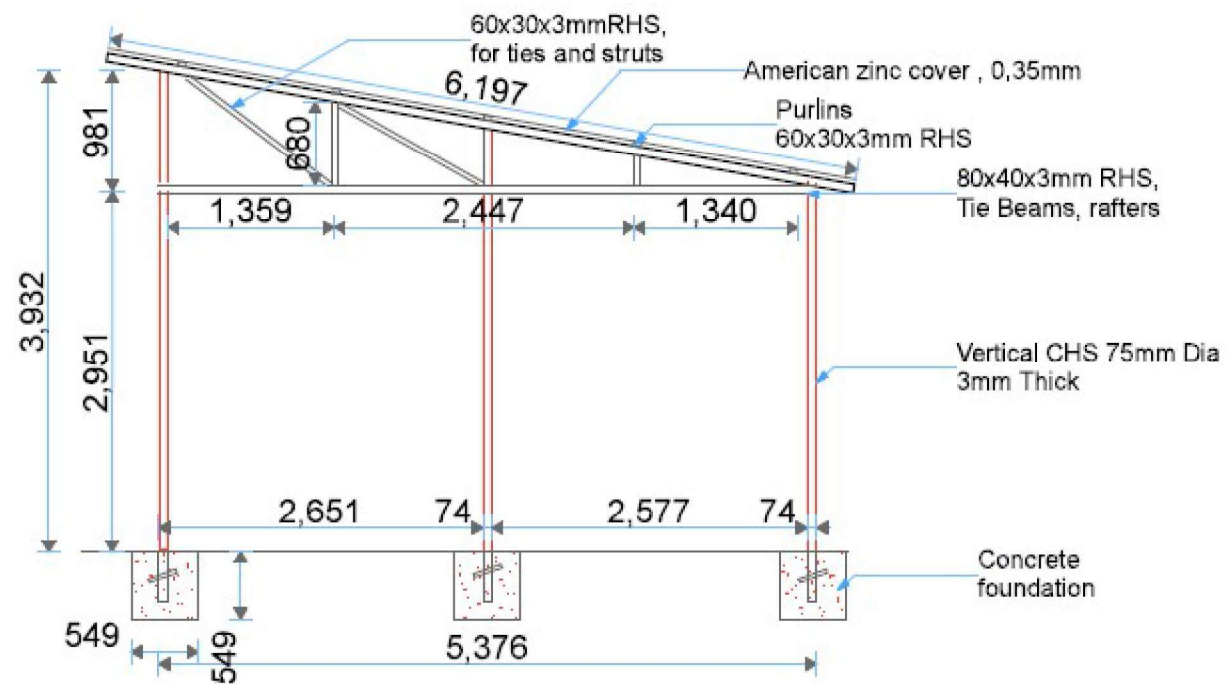
**REV.00**

**DATE: MARCH 2024**

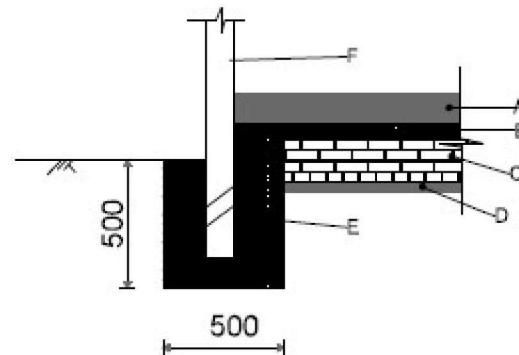
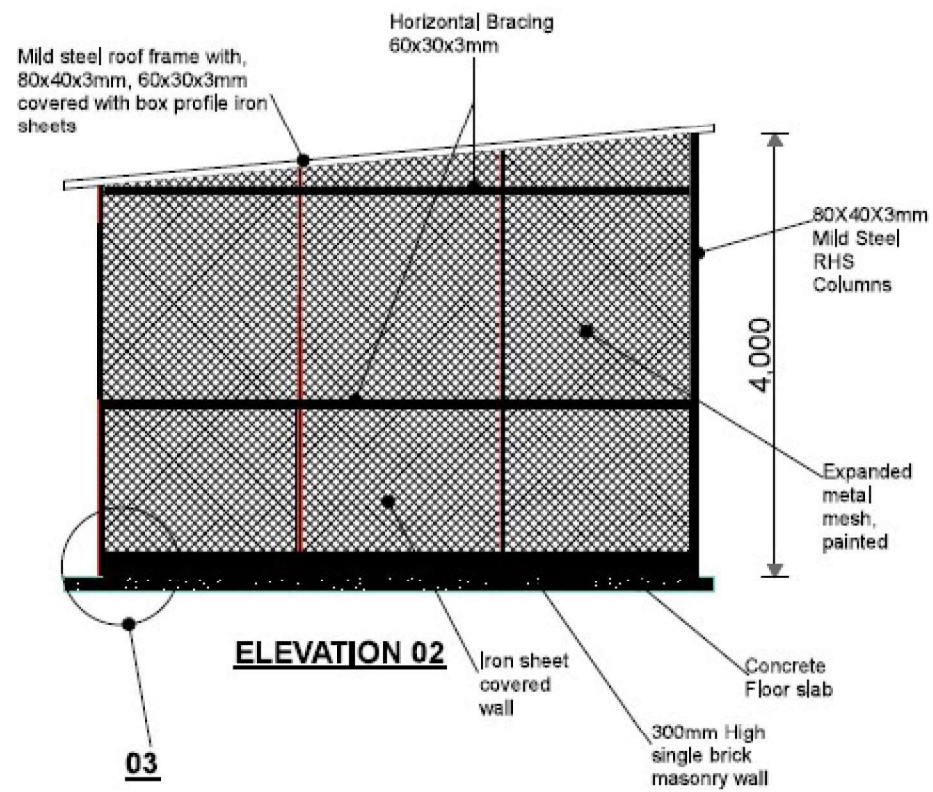
**NOTE:** ALL DIMENSIONS ARE SHOWN IN METERS (M) UNLESS OTHERWISE SPECIFIED. DRAWINGS ARE NOT SCALED. ONLY FIGURED DIMENSIONS TO BE USED. THE CONTRACTOR MUST CHECK AND VERIFY ALL DIMENSIONS ON SITE BEFORE COMMENCING OF ANY WORK.

THE STORM DRAINS TO COMPLY WITH BS 556. ALL TESTING OF PIPES MUST BE COMPLETE BEFORE PLASTERING. ALL MECHANICAL WORKS MUST BE COORDINATED WITH ELECTRICAL WORKS AND ANY CONFLICTS RESOLVED BEFORE WORKS BEGIN.  
ELECTRICAL GENERAL: ALL CONDUITS MUST BE LAID BEFORE PLASTERING





**ELEVATION  
02**



**DETAILS 03**

- A: 300mm single layer brick masonry wall plastered on outside as a plint
- B: 100mm Plain concrete cast as ground slab on top of select material fill
- C: 300mm Strip masonry foundation
- D: 50mm Plain concrete laid in foundation trenches
- E: Plain concrete class 20 poured around the vertical MS columns
- F: Vertical poles 80x40x3mm RHS

