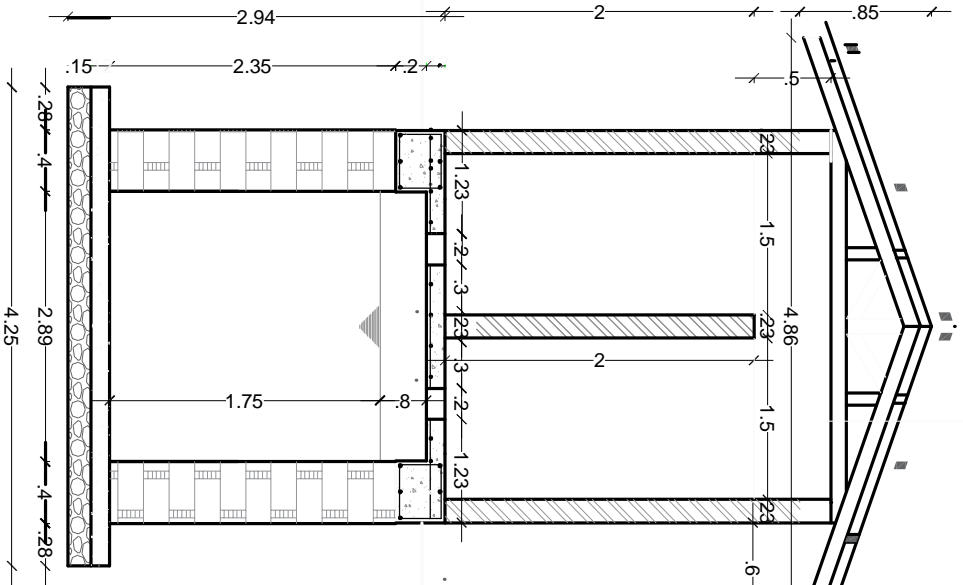


Mahama Refugee Camp Eastern Province, Rwanda

Corrugated Iron Sheet Roof Cover
Timber Purlins of 5cm x 7cm
Eucalyptus Truss



Section A - A

Designed by: Eric Mugabo, WASH Officer
 Drawn by: Amaha Atiaye, Physical Site Planner
 Revised by: Mark Chitelesi, Oxfam Engineer

Date: September 2015
Revised: January 2016

.\UNHCRLogo.jpg

UNHCR Representation in Rwanda
Field Office Kirehe
P. O. Box: 876 Trl: +250589822 Fax: +250583485
e-mail: @unhcr.org
Eastern Province, Rwanda

AR